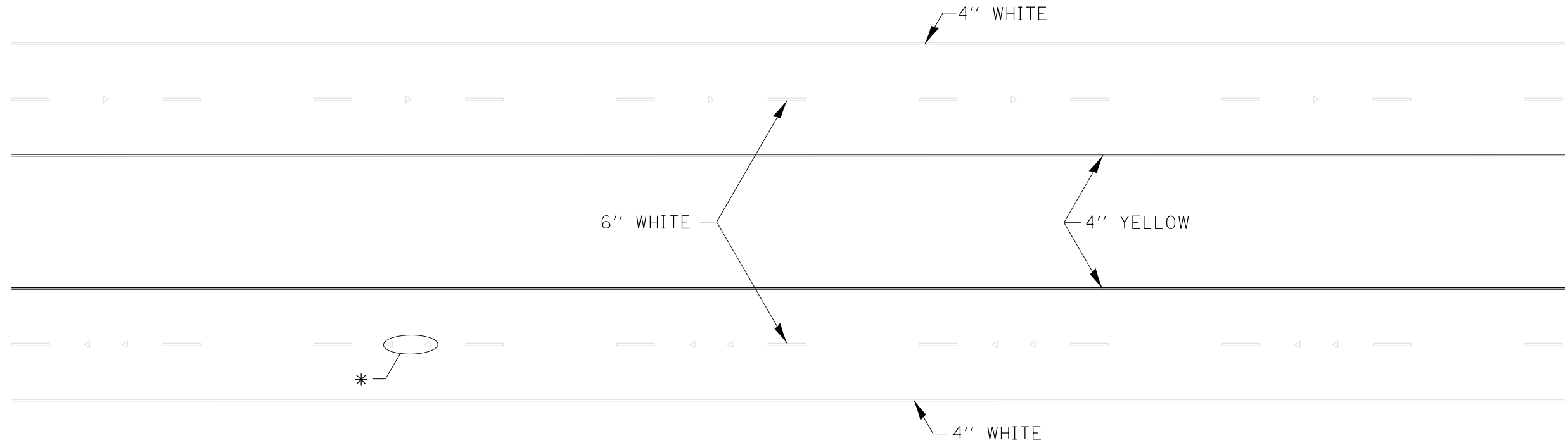
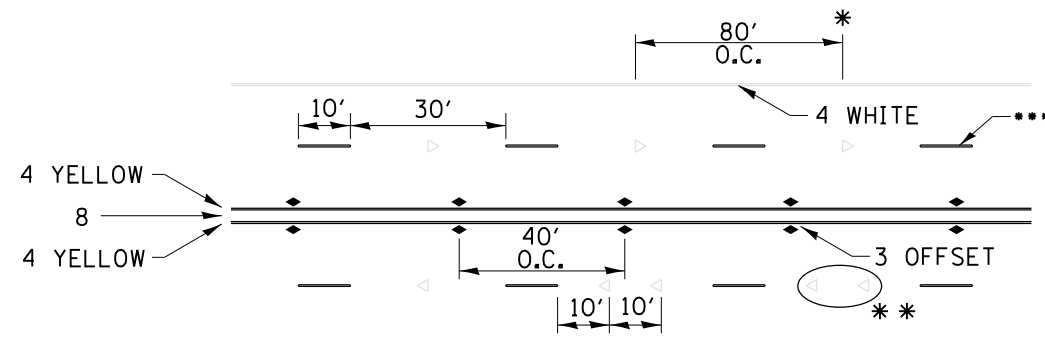


TYPICAL PAVEMENT MARKINGS



* SEE HIGHWAY STANDARD 781001 FOR SPACING DETAILS.
USE DOUBLE MARKERS WHEN ADT \geq 20,000.

MULTI-LANE / DIVIDED



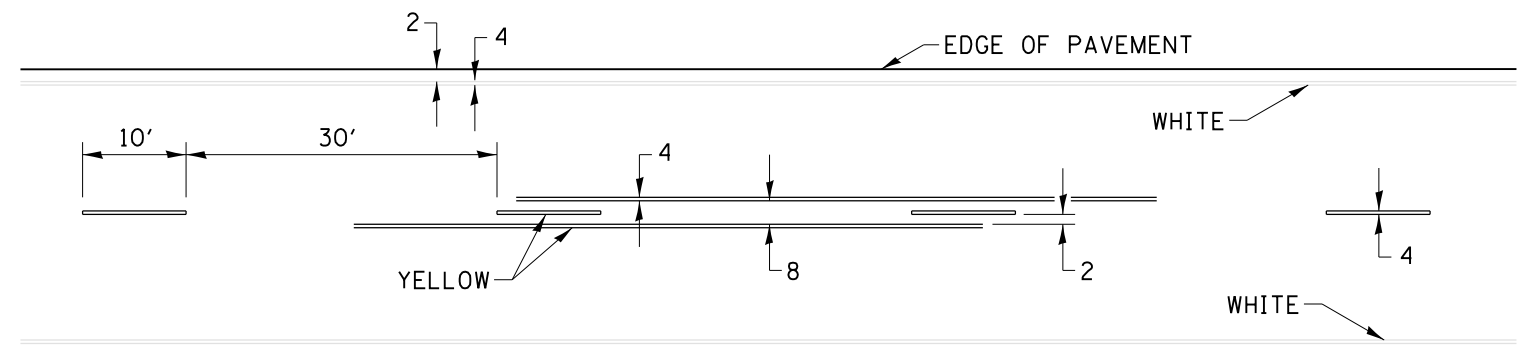
SYMBOLS

* REDUCE TO 40' O.C. ON CURVES WHERE ADVISORY SPEEDS ARE 10 MPH LOWER THAN POSTED SPEEDS.

** USE DOUBLE MARKERS WHEN ADT \geq 20,000

*** CENTERLINE SKIP DASH PAVEMENT MARKING SPEED LIMIT LESS THAN 40 MPH USE 4" LINE SPEED LIMIT 40 MPH AND OVER USE 6" LINE

TYPICAL PAVEMENT MARKING FOR TWO LANE SECTION – NO PASSING ZONES



MULTI-LANE / UNDIVIDED & ONE WAY

(FOR MULTI-LANE UNDIVIDED HIGHWAYS USE THIS
DETAIL NOT HIGHWAY STANDARD 781001)

FILE NAME =	USER NAME = rundbladerr	DESIGNED -	REVISED - 11-28-12	STATE OF ILLINOIS DEPARTMENT OF TRANSPORTATION	REGION 2 / DISTRICT 2 STANDARD				F.A.P. RTE.	SECTION	COUNTY	TOTAL SHEETS	SHEET NO.
ci:\pw\work\p\dot\rundbladerr\d0331847	0264H70-District2Standards-01.dgn	DRAWN -	REVISED -		734	77R-1	WINNEBAGO	179	102				
	PLOT SCALE = 100.0020' / in.	CHECKED -	REVISED -		CONTRACT NO. 64H70								
	PLOT DATE = Thu Aug 15 13:18:52 2013	DATE -	REVISED -		SCALE:	SHEET NO.	OF SHEETS	STA.	TO STA.	FED. ROAD DIST. NO.	ILLINOIS FED. AID PROJECT		