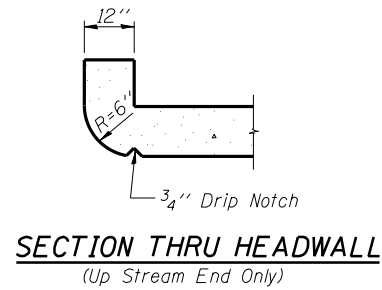
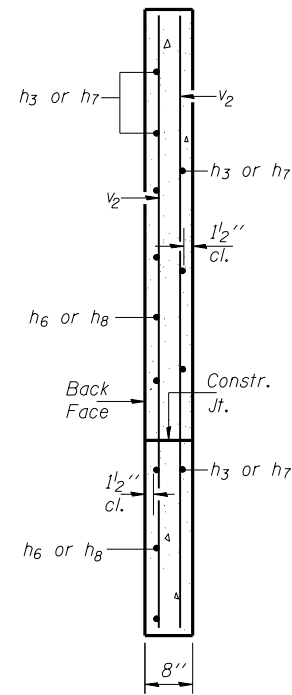


DRAIN DETAIL

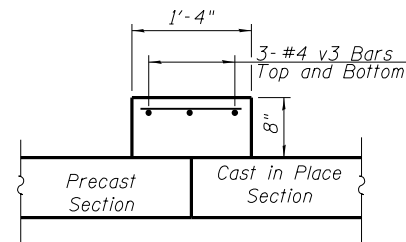
(All costs associated with furnishing and constructing the above drain details will not be measured for payment but shall be included in the contract unit price for Concrete Box Culverts.)



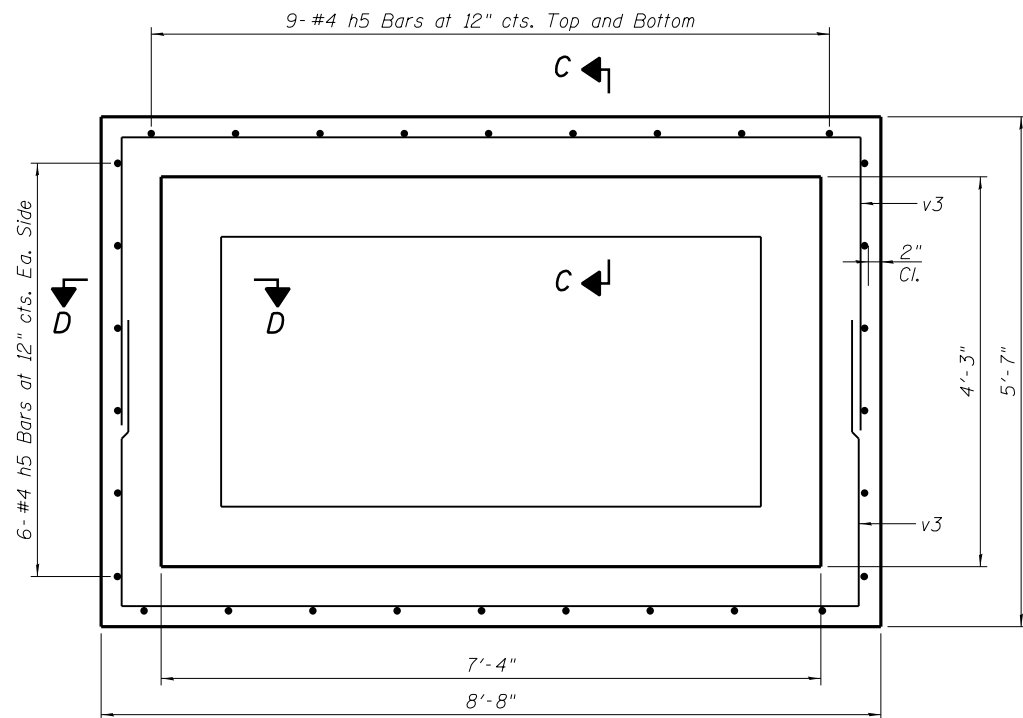
SECTION THRU HEADWALL
(Up Stream End Only)



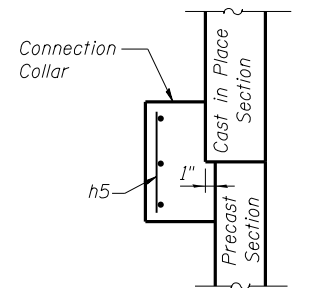
SECTION A-A



SECTION C-C



SECTION B-B
(Showing Connection Collar)



SECTION D-D

NOTES

Cost for Connection Collar concrete shall be included with Concrete Box Culverts.
See previous Sheet for Connection Collar Reinforcement details.

FILE NAME =	USER NAME =	DESIGNED - SB	REVISED -
et:\pw\work\p1dot\rundbladerr\d0331860	Precast Culvert 997+61 Gr C.dgn	DRAWN - SB	REVISED -
	PLOT SCALE =	CHECKED - JAN	REVISED -
	PLOT DATE =	DATE - 8/24/12 2	REVISED -

STATE OF ILLINOIS
DEPARTMENT OF TRANSPORTATION

CULVERT DETAILS
CULVERT AT STATION 997 + 61

SCALE: 1"=50' SHEET NO. 3 OF 3 SHEETS STA. TO STA.

F.A.P. RTE.	SECTION	COUNTY	TOTAL SHEETS	SHEET NO.
734	77R-1	WINNEBAGO	179	91
CONTRACT NO. 64H70				
ILLINOIS FED. AID PROJECT				