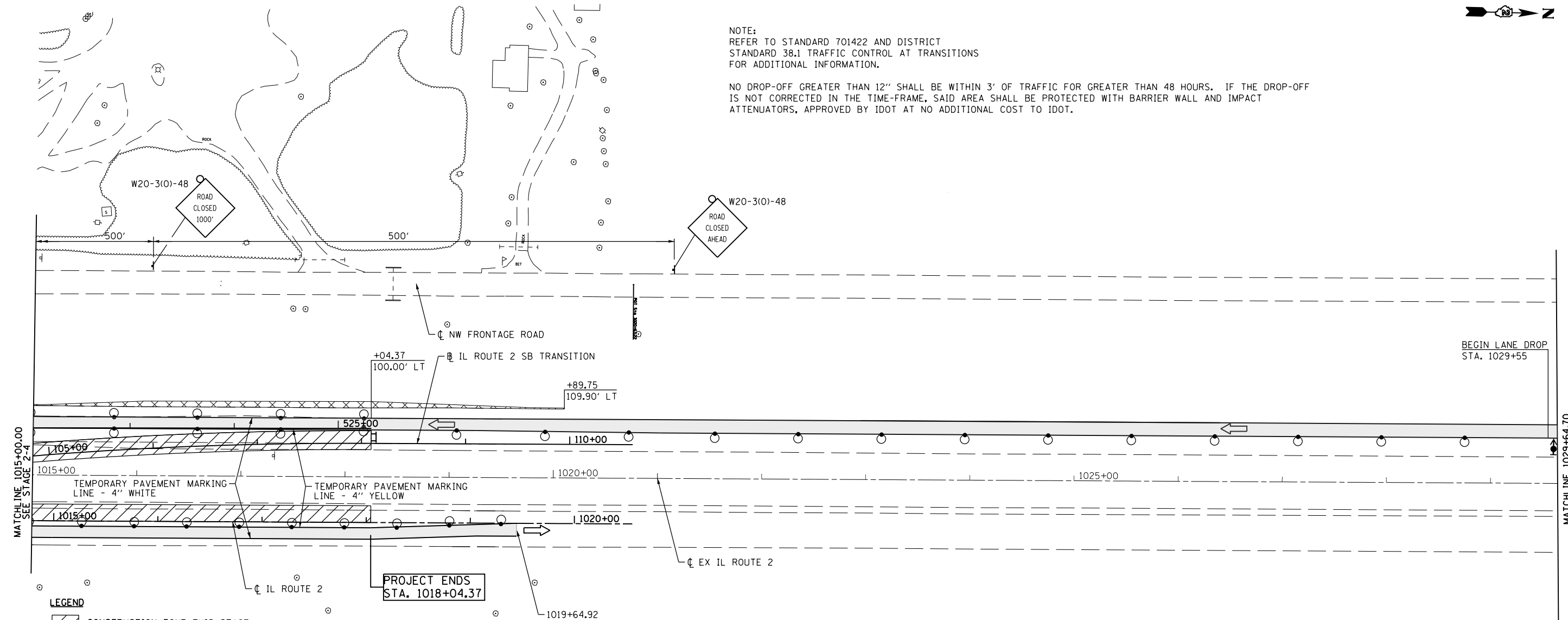


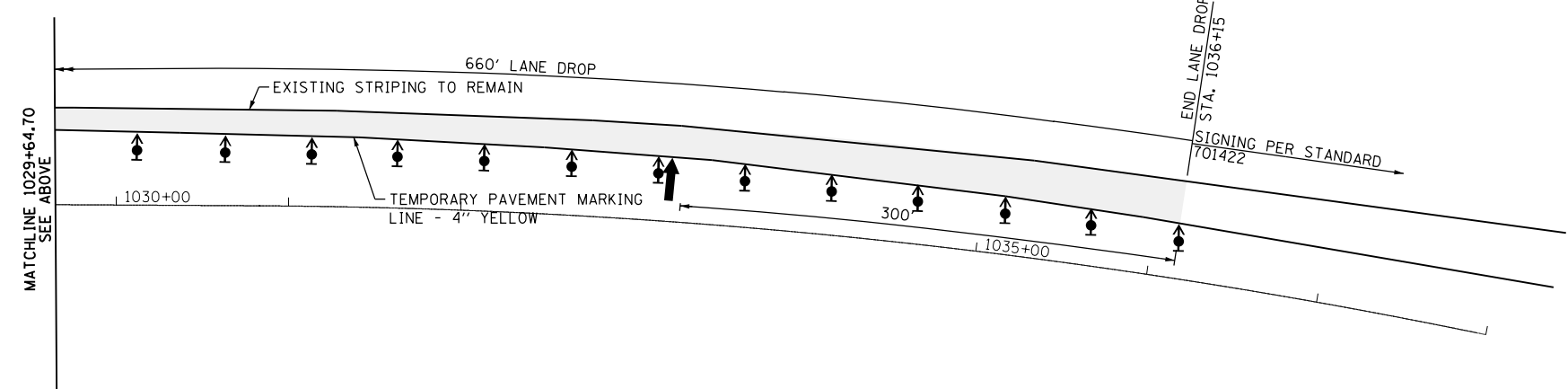


NOTE:
REFER TO STANDARD 701422 AND DISTRICT
STANDARD 38.1 TRAFFIC CONTROL AT TRANSITIONS
FOR ADDITIONAL INFORMATION.

NO DROP-OFF GREATER THAN 12" SHALL BE WITHIN 3' OF TRAFFIC FOR GREATER THAN 48 HOURS. IF THE DROP-OFF
IS NOT CORRECTED IN THE TIME-FRAME, SAID AREA SHALL BE PROTECTED WITH BARRIER WALL AND IMPACT
ATTENUATORS, APPROVED BY IDOT AT NO ADDITIONAL COST TO IDOT.



- LEGEND**
- CONSTRUCTION ZONE THIS STAGE
 - DIRECTION OF TRAVEL
 - TEMPORARY PAVEMENT (SEE TYPICAL SECTION FOR WIDENING)
 - BARRICADE, TYPE III
 - DRUM WITH STEADY BI-DIRECTIONAL BURNING LIGHT
 - ARROW BOARD
 - DIRECTION INDICATOR BARRICADE
 - VERTICAL PANEL



| | | | | | | | | | | | | |
|---|--|----------------|-----------|---|-------------------------------------|----------------------------|------------------------------|--------------------|---------------------|---------------------------|--------------------|--|
| FILE NAME = c:\pw\work\p\idot\undbladerrr\d0331856\0264h70\sh-t-staging02-05.dgn | USER NAME = 0264h70\sh-t-staging02-05.dgn | DESIGNED - RDT | REVISED - | STATE OF ILLINOIS DEPARTMENT OF TRANSPORTATION | ILLINOIS ROUTE 2 STAGE 2 | | F.A.P. RTE. 734 | SECTION 77R-1 | COUNTY WINNEBAGO | TOTAL SHEETS 179 | SHEET NO. 61 | |
| PLOT SCALE = | CHECKED - JAC | REVISED - | REVISED - | | SCALE: 1"=50' | SHEET NO. 61 OF 179 SHEETS | STA. 1015+00 TO STA. 1036+15 | CONTRACT NO. 64H70 | | ILLINOIS FED. AID PROJECT | | |
| PLOT DATE = | DATE - 10/05/2012 | REVISED - | REVISED - | | | | | | | | | |
| | | | | | | | | | | | | |