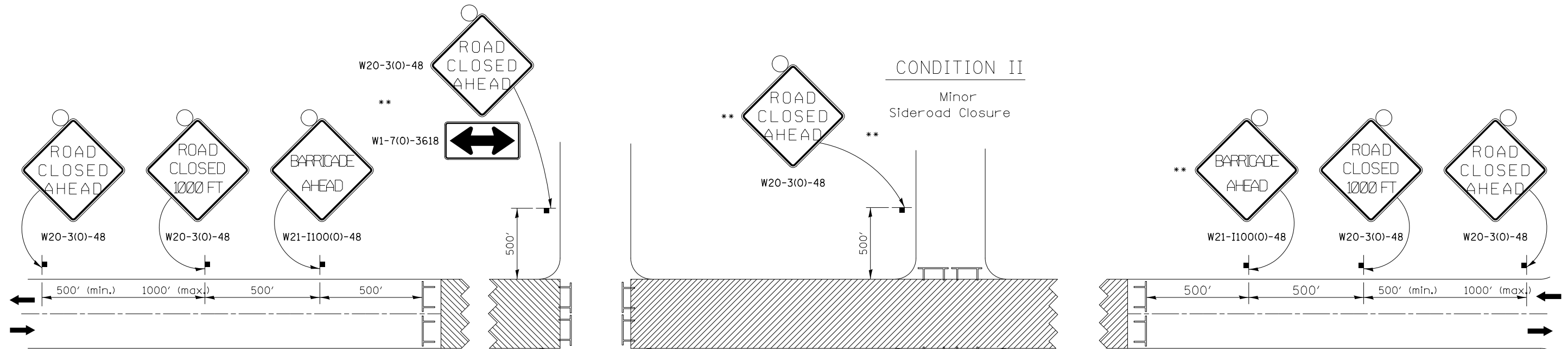
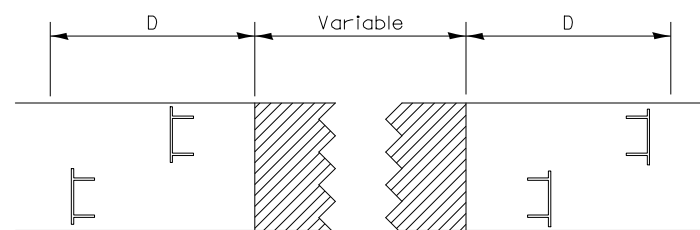


# TRAFFIC CONTROL FOR ROAD CLOSURE






ROAD CLOSED TO THRU TRAFFIC BARRICADE SET UP



Type III Barricades and R11-4-4830 signs shall be as shown in "Road Closed To Thru Traffic" detail on Highway Standard 701901. If the distance "D" exceeds 2000' an additional set of barricades and R11-4-4830 shall be placed at each end of the work area.

## SYMBOLS

-  Work area
-  Type III Barricade with Flashers
-  Sign with flashing light

CONDITION I  
Major Sideroad Closure

CONDITION II  
Minor Sideroad Closure

## GENERAL NOTES

Longitudinal dimensions may be adjusted to fit field conditions.

When speed limit is less than 45mph, change sign spacing to 250' and change ROAD CLOSED 1000 FT to ROAD CLOSED 500 FT.

Side roads requiring all three signs as shown in CONDITION I (Major Sideroad Closure), shall be listed in the special provision.

\*\* Where local access is to be maintained, barricades are to be set up as shown in Road Closed to thru traffic. Type III Barricades and R11-2-4830 signs shall be as shown in "Road Closed To All Traffic" detail on Highway Standard 701901.

All dimensions are in inches unless otherwise shown.

TYPICAL APPLICATION FOR ROAD CLOSURE

FILE NAME = I:\Projects\4015550\4015550.0001\90.CAD	USER NAME = thompsrd	DESIGNED -	REVISED - 8-27-13
	Models and Sheets\04.C.Civil\Sheets\0264H28.dwg	CHECKED -	REVISED - 10-17-11
	PLOT SCALE = 103.5000' / in.	DATE -	REVISED -
	PLOT DATE = 1/21/2014	DATE -	REVISED -

STATE OF ILLINOIS  
DEPARTMENT OF TRANSPORTATION

REGION 2 / DISTRICT 2 STANDARD

SCALE: SHEET NO. 47 OF 47 SHEETS STA. TO STA.

F.A.P. RTE. 308	SECTION (3BRIM)	COUNTY ROCK ISLAND	TOTAL SHEETS 47	SHEET NO. 47
FED. ROAD DIST. NO. [ILLINOIS] FED. AID PROJECT			CONTRACT NO. 64H28	