

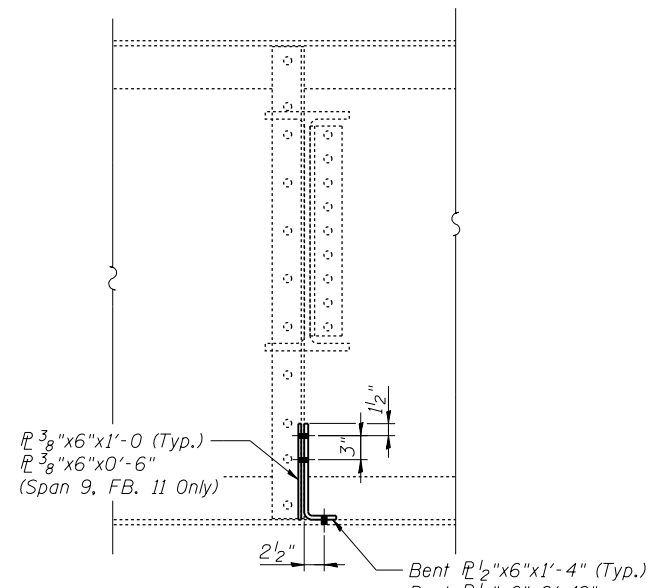
STIFFENER REPAIR LOCATIONS

DETAIL	SPAN	MEMBER	LOCATION
120	8	BEAM "D"	6th Stiffener from Bent 7, East Side
121	7	BEAM "D"	15th and 16th Stiffener from Bent 6, East Side
	26	BEAM "A"	4th Stiffener South of Bent 20, East Side
122	8	BEAM "F"	2nd & 3rd Stiffener from Bent 7, West Side
123	6	BEAM "A"	3rd Stiffener South Bent 6, East Side
	7	BEAM "F"	3rd Stiffener from Bent 7, West Side
124	7	BEAM "F"	19th Stiffener from Bent 6, West Side
125	11	FLOOR BEAM "13"	Between Stringer "E" and Stringer "F"-Panel 13
	12	FLOOR BEAM "9"	Between Stringer "A" and Stringer "B"- Panel 9
	12	FLOOR BEAM "6"	Between Stringer "E" and Stringer "F"-Panel 7
	13	FLOOR BEAM "0"	3rd, 4th and 8th Stiffener from West Side
126	9	FLOOR BEAM "8"	Stiffener @ Stringer "A" North Face
	9	FLOOR BEAM "8"	Stiffener @ Stringer "C" Panel 8, North Face
	9	FLOOR BEAM "5"	Stiffener @ Stringer "F" North Face
	9	FLOOR BEAM "11"	Stiffener @ Stringer "A" Panel 11
	11	FLOOR BEAM "8"	Stiffener @ Stringer "A" Panel 8, North Face
	12	FLOOR BEAM "7"	Stiffener Below Stringer "F" Panel 7, North Face
127	13	FLOOR BEAM "10"	Stiffener Below Stringer "F" Panel 10, North Face
128	12	FLOOR BEAM "9"	Stiffener Below Stringer "A" Panel 9, North Face
	13	FLOOR BEAM "9"	Stiffener @ Stringer "F"
129	9	FLOOR BEAM "0"	N. Face, Stiffener @ Stringers "B", "C", "D", & "E"
	12	FLOOR BEAM "0"	Stiffener @ Stringer "C"
	12	FLOOR BEAM "11"	Stiffeners @ Stringer "B", Stringer "C" and Stringer "D", Backside of Floor Beam
	13	FLOOR BEAM "11"	Stiffeners @ Stringer "B", Stringer "C" and Stringer "E" Below Joint
130	7	BEAM "A"	3rd and 5th Stiffener from Bent 7, East Side

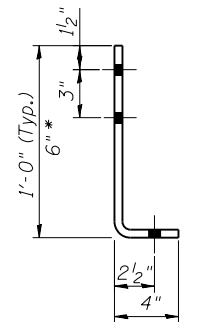
General Notes:
When referencing stiffeners, the first shall be on the pier or abutment.

Verify dimensions in field.

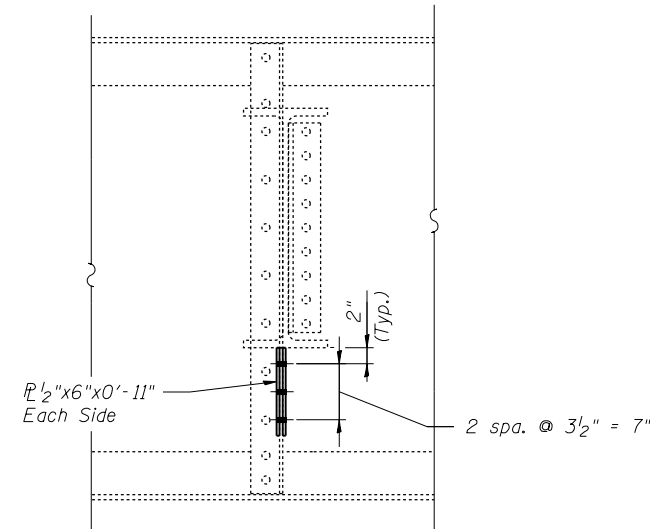
Work this Sheet with Sheet 31



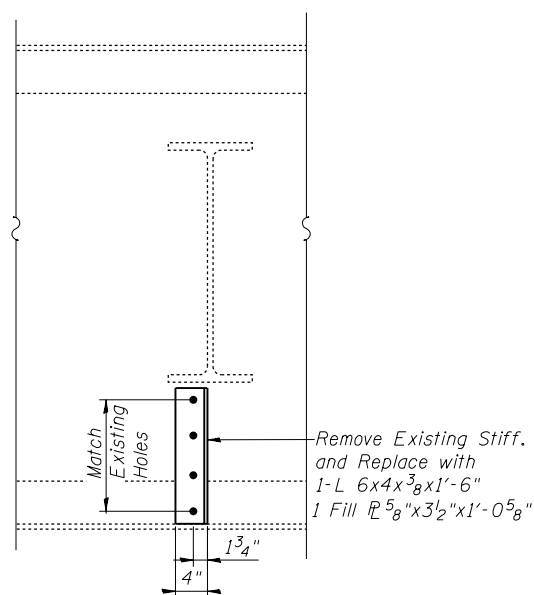
DETAIL 126
North Face
(Looking South)
Stringer "A" Shown
Stringer "C" Similar
Stringer "F" Similar but Opposite



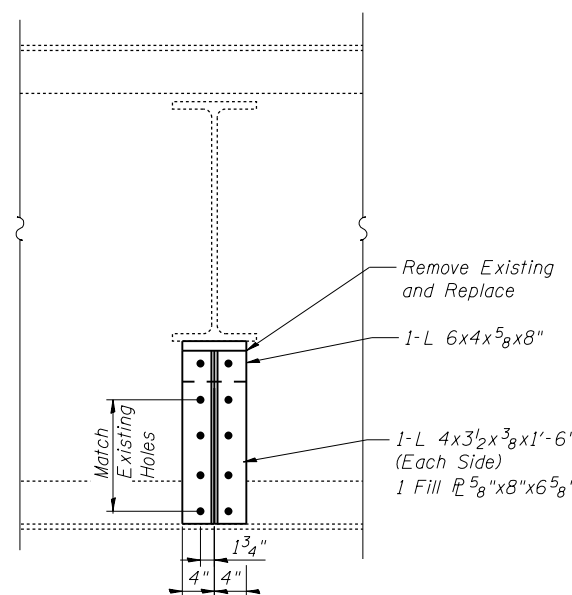
BENT PLATE
DETAIL 126
Bent 1/2"x6"x1'-4"
* - Span 9 FB. 11 Only.
Omit 2nd bolt hole and hold 1/2" edge distance.



DETAIL 127
Stiffener Repair @ Stringer "F" on
Floorbeam 10, Span 13



DETAIL 128
North Face
(Looking South)



DETAIL 129
North Face
(Looking South)

I:\Projects\4015550\4015550_0001\90_CAD_Models_and_Sheets\04_CJ_Bridge\SD\0819905-64H28-027-5111\StiffenerRepair.dgn