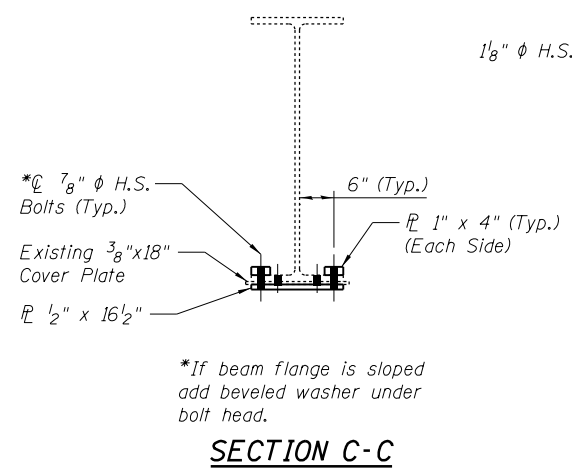


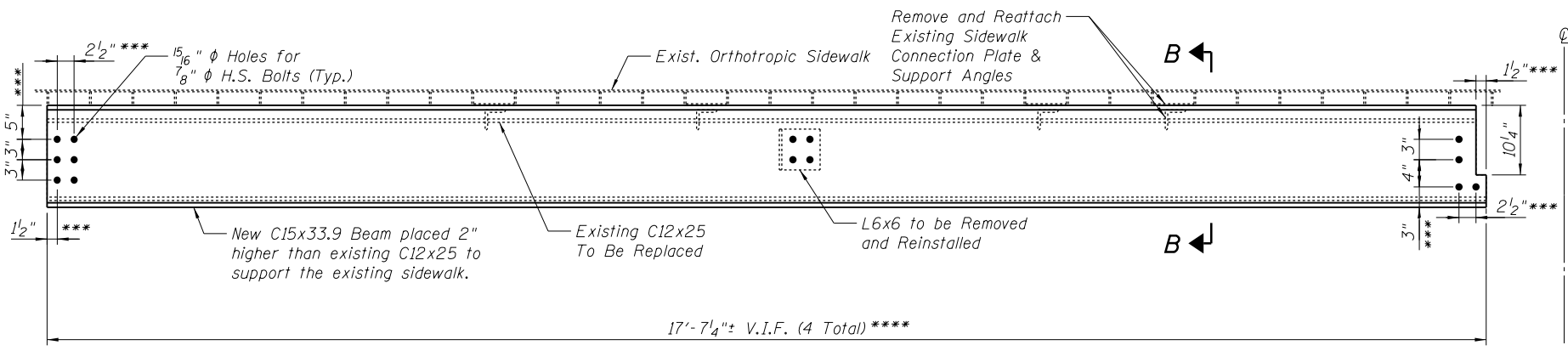
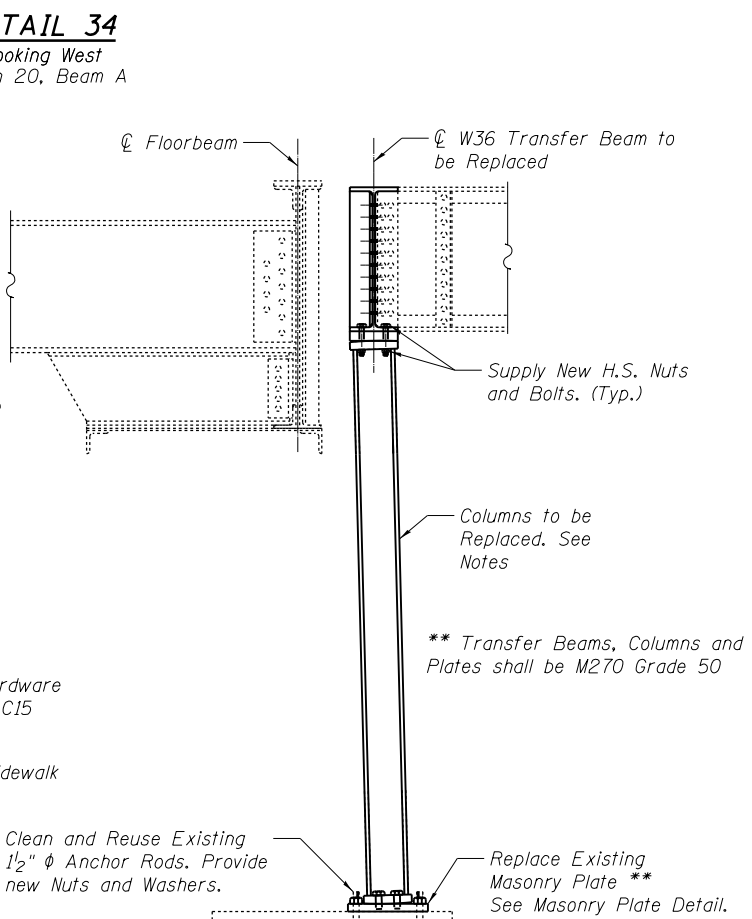
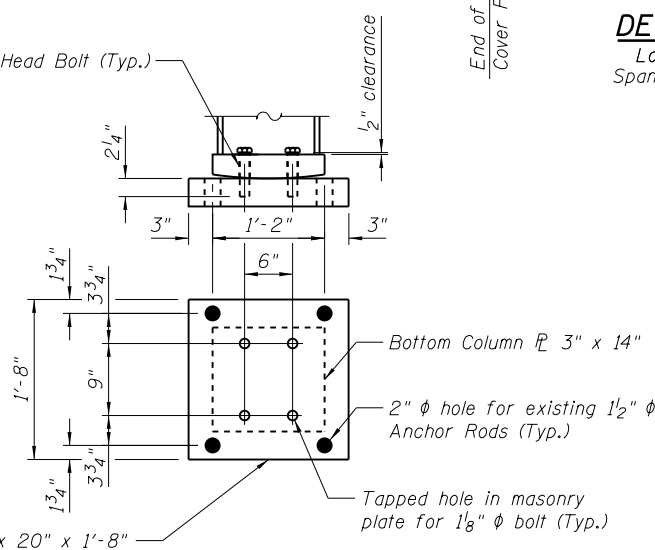
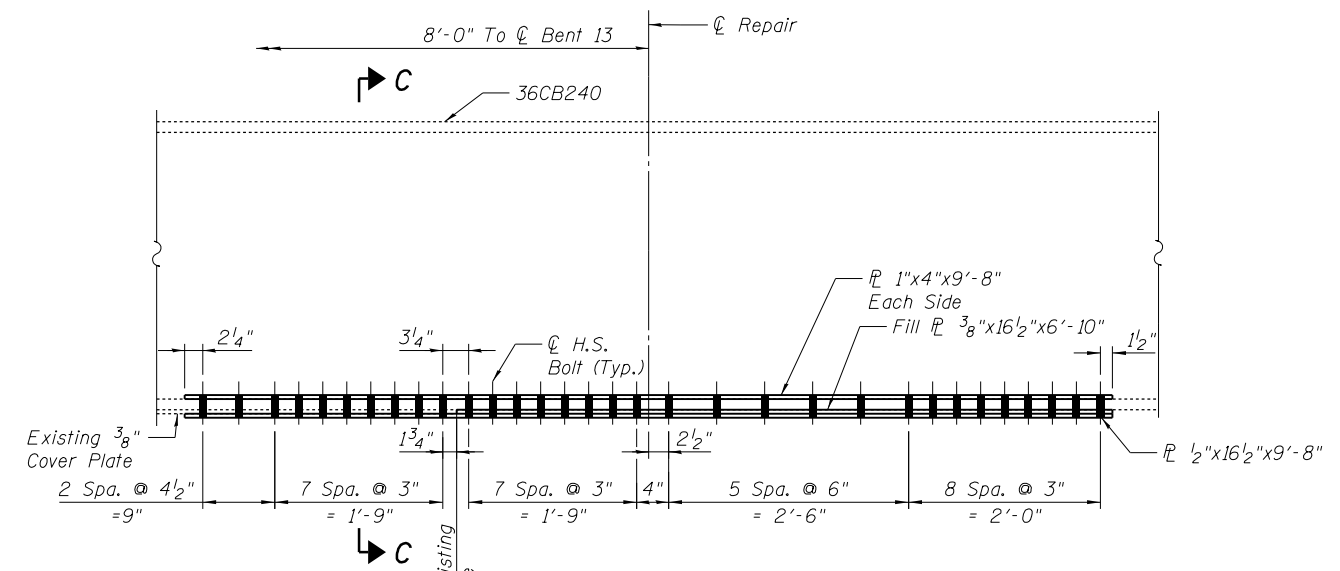
DETAIL 33 - LOCATION AND PLATE SIZE SUMMARY

SPAN	LOCATION	CHANNEL LENGTH
17	West Side	16'-0 1/4"
18	West Side	18'-6"
19	West Side	20'-11 1/2"
20	West Side	20'-10 1/2"
21	West Side	19'-11 1/2"

Notes:
New Hole Diameter to be 1 5/16", Spacing to Match Existing.
Contractor to Verify All Dimensions Prior to Ordering Steel.
Temporary support of sidewalk and shim plates are included in
Furnishing and Erecting Structural Steel pay item.



*If beam flange is sloped
add beveled washer under
bolt head.



Note:
Temporary support of sidewalk during removal
of channel is included in Furnishing and
Erecting Structural Steel pay item.
*** Hole locations to match existing with
channel flush with bottom of sidewalk. Cut
notch to fit in field for similar locations. Field
verify all dimensions.
**** Channel lengths estimated. Contractor shall
verify in field prior to ordering material.

Span 13, Inner Sidewalk Channel, West Side at Pier 5 (Shown)
Span 12 Inner Sidewalk Channel, West Side at Pier 4 (Similar)
Span 13 Inner Sidewalk Channel, East Side at Pier 5 (Similar)
Span 13 Inner Sidewalk Channel, East Side at Pier 6 (Similar)

DETAIL 36 - DEAD LOAD REACTIONS

PIER	DEAD LOAD REACTIONS (KIPS)					
	A	B	C	D	E	F
1	40	24	19	19	18	24
6	55	38	32	32	38	55

Notes:
Contractor shall temporarily support beams while transfer
beam is being replaced. Dead load reactions provided for
temporary shoring and cribbing. Contractor to add
construction live loads. All work associated with temporarily
supporting beams shall be paid for as Temporary Shoring
and Cribbing, Type I. See Special Provisions.

See Sheet 33 for Transfer Beam and Column details.

FILE NAME = I:\Projects\4815550\4015550_0001\90_CAD_Models_and_Sheets\04_CJ_Bridge\0815085-64128-022-Details_10.dgn



USER NAME = pattisjm	DESIGNED - JMP	REVISED
PLOT SCALE = 2:0.0000 '1' / in.	CHECKED - JAN	REVISED
PLOT DATE = 1/24/2014	DRAWN - JMP	REVISED
	CHECKED - SB	REVISED

STATE OF ILLINOIS
DEPARTMENT OF TRANSPORTATION

STRUCTURAL STEEL REPAIR DETAILS, SHEET 10
STRUCTURE NO. 081-9905
SHEET NO. 21 OF 33 SHEETS

F.A.P. RTE.	SECTION	COUNTY	TOTAL SHEETS	SHEET NO.
308	(3BRIM)	ROCK ISLAND	47	34
C-92-090-12		CONTRACT NO. 64H28		
ILLINOIS FED. AID PROJECT				