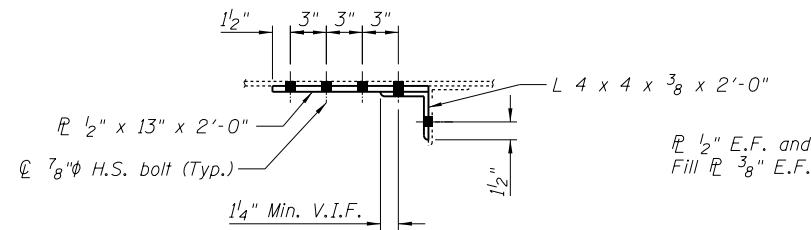
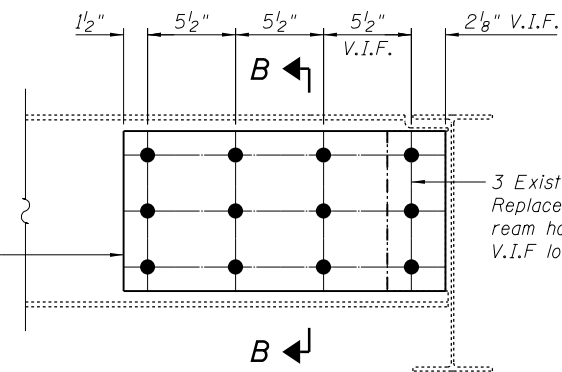


DETAIL 19

Span 9 Floorbeam 11 @ Str. F
(Looking North)



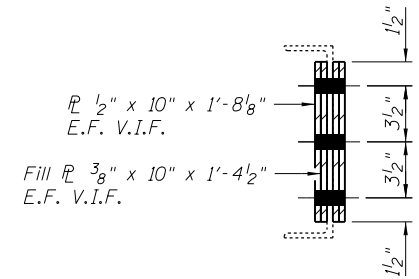
SECTION A-A



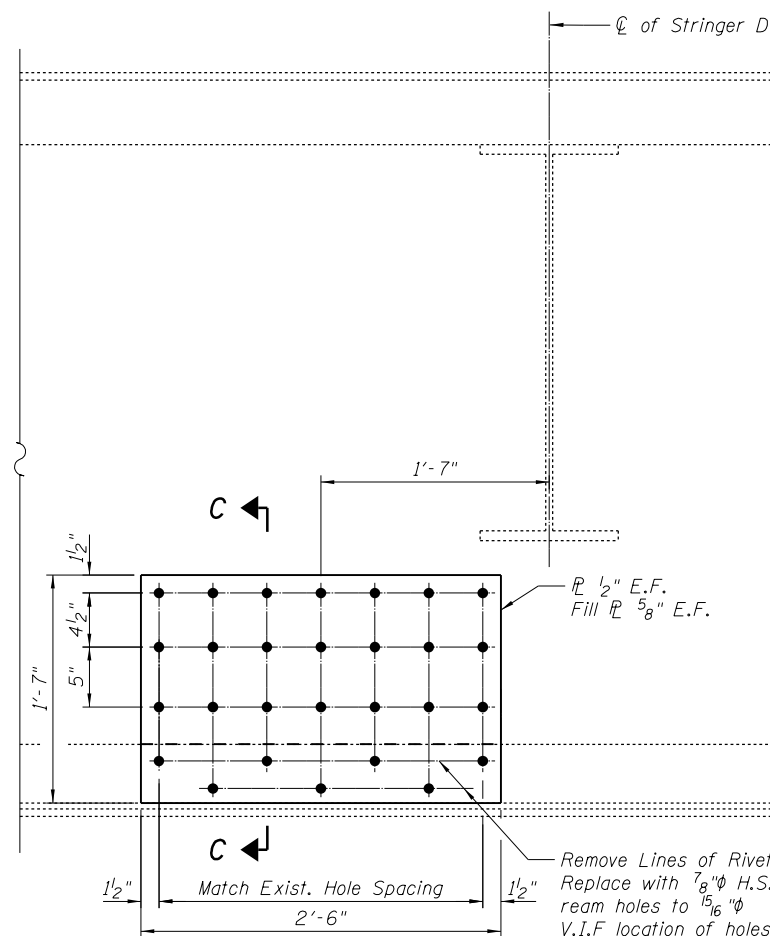
DETAIL 20

Span 7 Sign Support Channel,
East Side @ 6th Bracket from Bent 6
(Looking West)
Span 7, Sign Support Channel,
West Side @ 4th Bracket from Bent 7
(Looking East)

3 Existing Bolts,
Replace with 7/8" φ H.S. Bolts
ream holes to 15/16" φ
V.I.F. location of holes

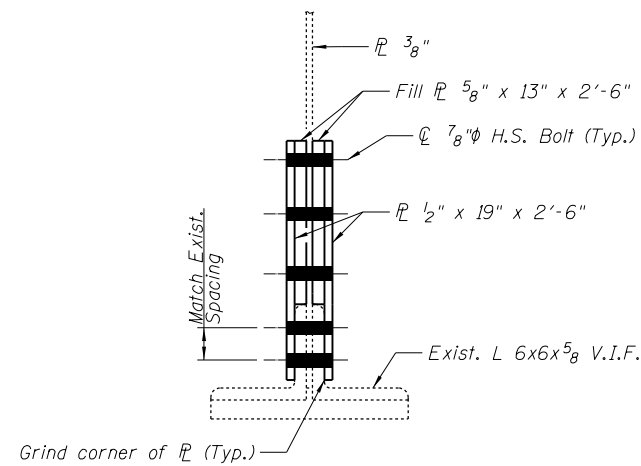


SECTION B-B

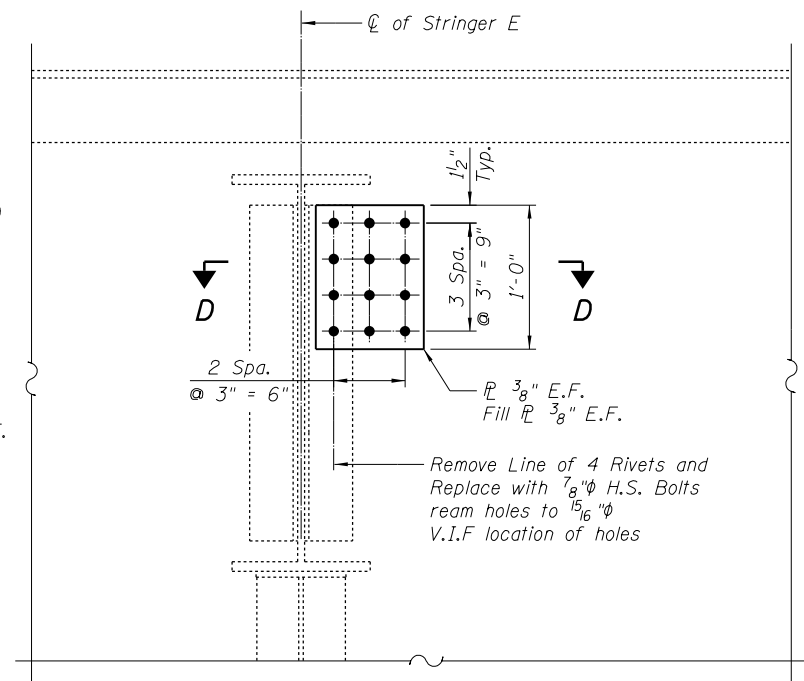


DETAIL 21

Span 9 Floorbeam 5 Between Str. D & E
(Looking North)

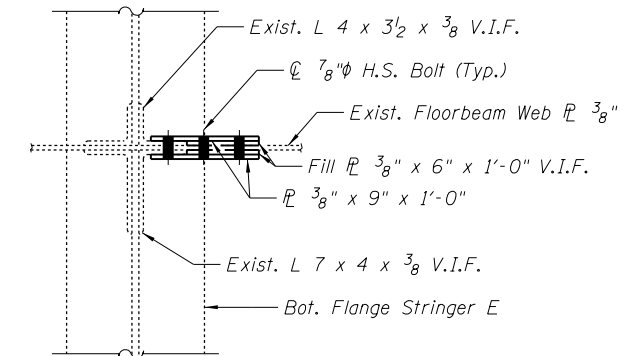


SECTION C-C



DETAIL 22

Span 13 Str. E @ Floorbeam 0
(Looking North)



SECTION D-D

FILE NAME = I:\Projects\4015550\4015550-0001-190-CAD Models and Sheets\04_CJ_Bridge\081908-64H28-016-Details 6.dgn



| | | |
|---------------------------------|-------------------|---------|
| USER NAME = patrisjm | DESIGNED - MJK | REVISED |
| PLOT SCALE = 2:0.0000 '1' / in. | CHECKED - JAN | REVISED |
| PLOT DATE = 1/21/2014 | DRAWN - MJK/KK/SB | REVISED |
| | CHECKED - JAN | REVISED |

STATE OF ILLINOIS
DEPARTMENT OF TRANSPORTATION

STRUCTURAL STEEL REPAIR DETAILS, SHEET 6
STRUCTURE NO. 081-9905

SHEET NO. 17 OF 33 SHEETS

| F.A.P. RTE. | SECTION | COUNTY | TOTAL SHEETS | SHEET NO. |
|---------------------------|---------|--------------------|--------------|-----------|
| 308 | (3BRM) | ROCK ISLAND | 47 | 30 |
| C-92-090-12 | | CONTRACT NO. 64H28 | | |
| ILLINOIS FED. AID PROJECT | | | | |