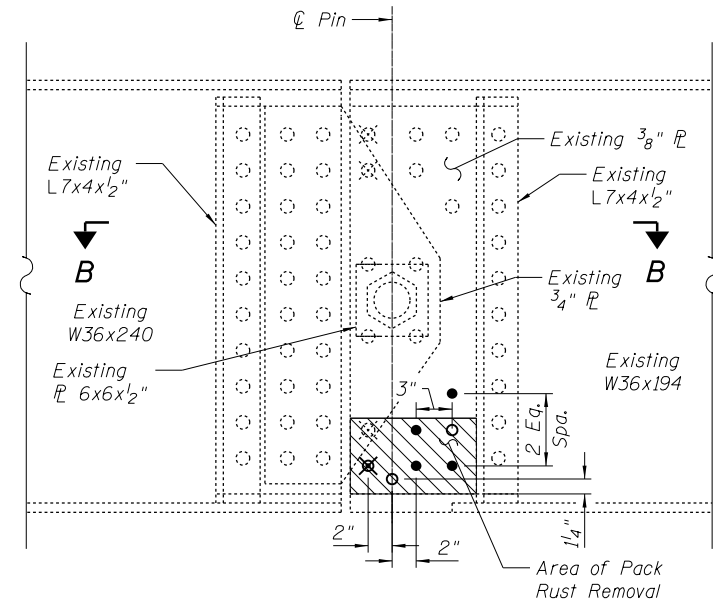


**DETAIL 4**

Span 12 Floorbeam 11 @ East Tie  
(Plan View)

Install one 7/8" φ H.S. Bolt with two 1/4"x2"x0'-4" PL washers, one on each side of lateral bracing connection plate (Typ.)



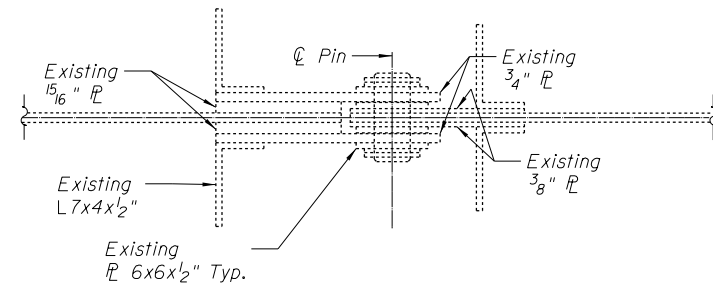
**DETAIL 5**

Span 21, Beam F  
North Pin, West Face

- REPAIR SEQUENCE:**
1. Drill out and remove designated flattened rivets.
  2. Remove pack rust from between 3/8" bearing plates and web of W36x194 using hand tool or power tool methods.
  3. Clean out bolt holes and tap threads in plates and web of W36x194 at location where threaded rod will be installed.
  4. Install new 7/8" φ A325SC Bolts and Tighten to bring 3/8" plates into contact with web of W36x194.
  5. Install new 1" φ H.S. threaded rod. Threaded rod should be cut short to allow for 1/8" of exposed threads on each 3/8" bearing plate.
  6. Mar exposed threads on each 3/8" bearing plate to prevent threaded rod from rotating out of hole.

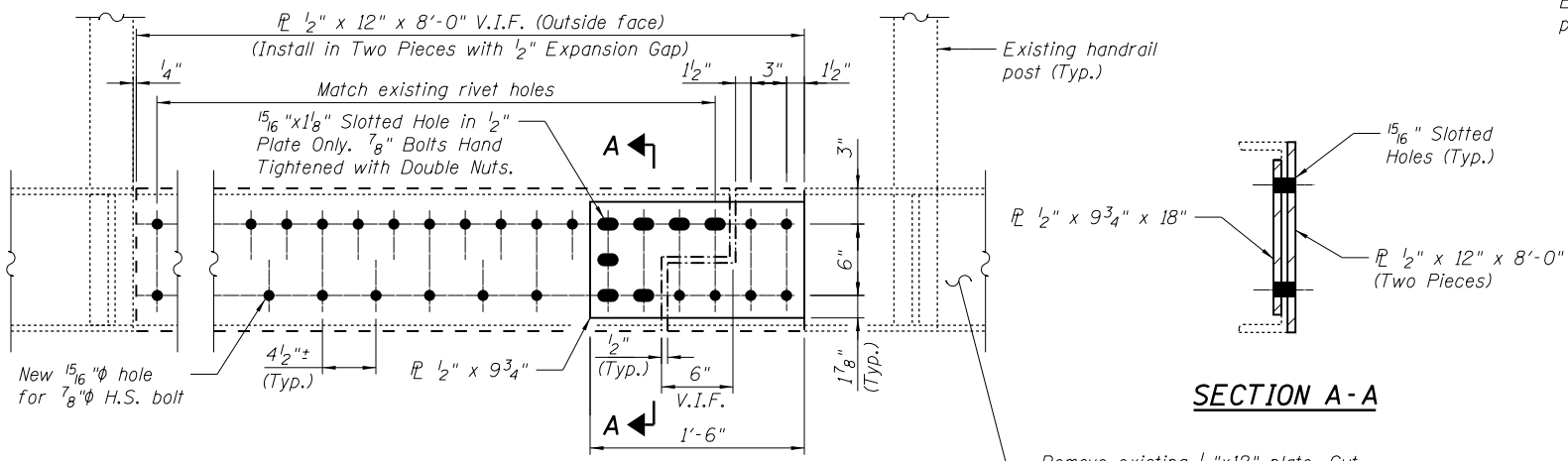
**LEGEND:**

- Existing Rivet
- Existing Flattened Rivet to be replaced with New 7/8" φ Hex Head Bolt
- ⊗ Existing Flattened Rivet to be replaced with New 1" φ H.S. Threaded Rod
- ⊗ Existing Flattened Rivet to Remain
- New 7/8" φ A325SC Hex Head Bolt



**SECTION B-B**

Existing 7 Spa. @ ±4"  
Rep. ex. rivets w/ H.S. bolts

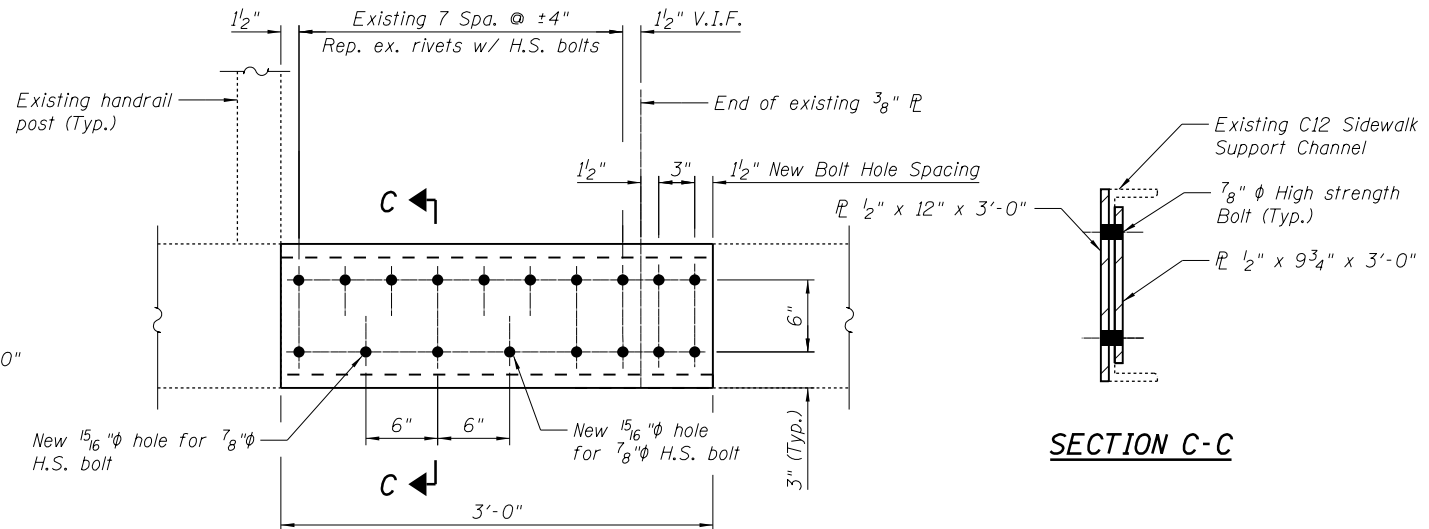


**DETAIL 6**

Span 21 East Sidewalk @ 2nd Bracket North from Bent 14  
(Looking East)

Contractor to ensure support of sidewalk channel during splice plate exchange

Remove existing 1/2"x12" plate. Cut off 8'-0" section at expansion joint. Replace remainder of existing plate and add Detail 6 new plates.



**DETAIL 7**

Span 25 West Sidewalk, 6' North from Bent 18  
(Looking East)

Contractor to ensure support of sidewalk channel during splice plate exchange

I:\Projects\4015550\4015550-0001-90-CAD Models and Sheets\04\_CJ\_Bridge\08150905-64H28-012-Details 2.dgn



USER NAME = pottrjm	DESIGNED - MJK	REVISED
PLOT SCALE = 2:0.0000 '1' / in.	CHECKED - JAN	REVISED
PLOT DATE = 1/21/2014	DRAWN - JMP	REVISED
	CHECKED - JAN	REVISED

**STATE OF ILLINOIS  
DEPARTMENT OF TRANSPORTATION**

**STRUCTURAL STEEL REPAIR DETAILS, SHEET 2  
STRUCTURE NO. 081-9905**

SHEET NO. 13 OF 33 SHEETS

F.A.P. RTE.	SECTION	COUNTY	TOTAL SHEETS	SHEET NO.
308	(3BRM)	ROCK ISLAND	47	26
C-92-090-12		CONTRACT NO. 64H28		
ILLINOIS FED. AID PROJECT				