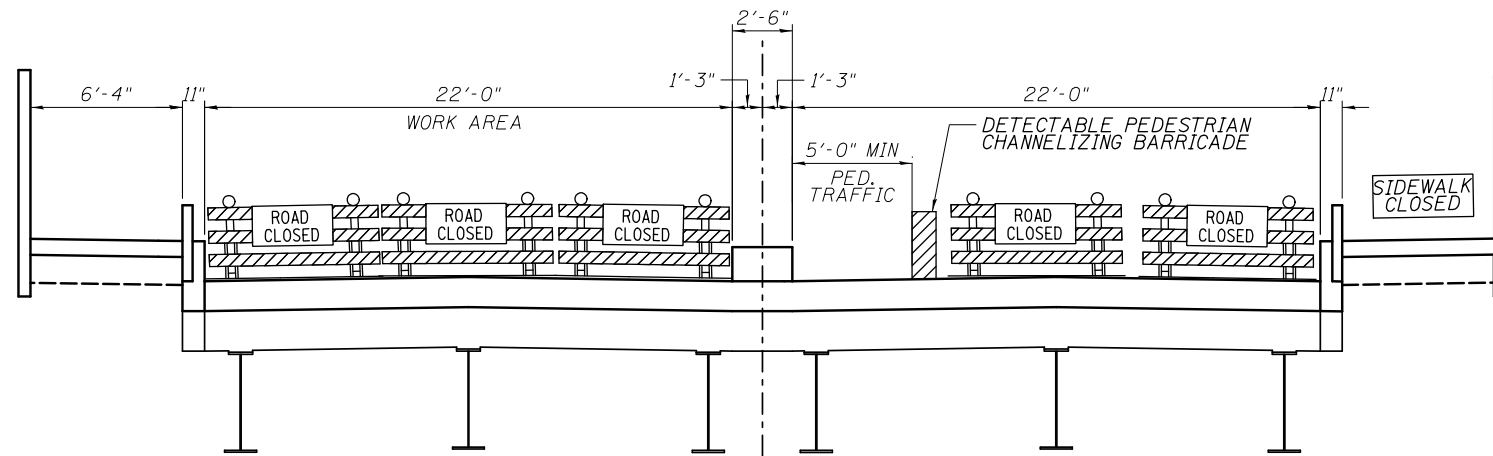
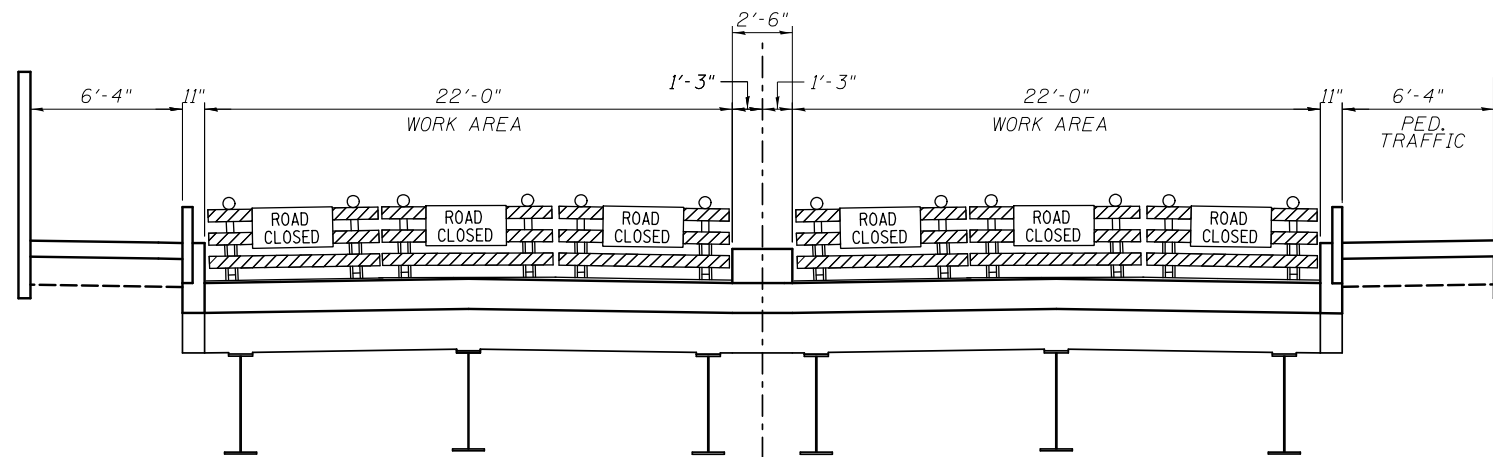


FILE NAME = \\stvgroup\stvgroup.com\3\CHIL\3\Projects\4015550\4015550\0001\90_CAD_Models_and_Sheets\04_Civil\1\Sheets\0254428.tgpcad.dgn



TYPICAL SECTION BETWEEN FLOOR BEAMS - STAGE 1
(Looking North)



TYPICAL SECTION BETWEEN FLOOR BEAMS - STAGE 2
(Looking North)

GENERAL NOTES FOR TRAFFIC CONTROL:

- The Contractor shall not mount construction traffic control signs on existing signs or supports.

NARRATIVE FOR PEDESTRIAN TRAFFIC CONTROL STAGES:

Two weeks prior to construction, contractor shall place changeable message boards beyond the northern and southern limits of the project. Message displayed on message boards shall be approved by the Engineer.

Full Bridge Closure
35 calendar days of full bridge closure to replace transfer beam and columns at Piers 1 & 6, Expansion Joint removal and replacement, and structural steel repairs as shown on plans.

Stage 1 Pedestrian Traffic
The northbound on ramp from 1st Ave. shall be closed. See detour plan for details. Shift pedestrian traffic to the west side of northbound lanes next to the existing median.

Stage 2 Pedestrian Traffic
Maintain existing pedestrian traffic on US Route 67 bridge using existing east sidewalk. The southbound off ramp to 1st Ave. and southbound on ramp from Brown Street/2nd Ave. shall be closed.

NOTES:
Contractor shall provide signage and detectable pedestrian channelizing barricades to facilitate and protect pedestrians when bridge is closed to vehicular traffic.

Use Highway Standard 701601 for Lane Closures at WB IL 92/ 1st Avenue, Highway Standards 701601 and 701701 for Lane Closures at River Road/ US 61, Highway Standard 701421 for Lane Closure at EB IL 92/ 1st Avenue and Highway Standard 701501 for Lane Closures at Gaines Street/ Biederbecke Drive for bridge repairs work.

Single lane closures on US 67 are not allowed from 6 am to 9 am and 3 pm to 6 pm Monday through Friday for preparation work prior to the full bridge closure using Highway Standard 701601. The Contractor shall keep two lanes open on SB Gaines Street between 4th Street and 2nd Street at all times during this preparation work. When there is a SB lane closure on US 67, use Highway Standard 701606 for lane closures.

The Contractor shall protect pedestrians from hazards caused by construction activities at all times. This includes, but is not limited to, flying debris and falling objects from work above.

The Contractor shall move the detectable pedestrian channelizing barricades for access only. They shall be immediately restored to position shown on the standard after the vehicle has cleared the path and a pedestrian flagger shall be present at the opening for the entire time the detectable pedestrian channelizing barricades are out of place.

USER NAME = thompsrd	DESIGNED - RDT/GC	REVISED -
	DRAWN - RDT	REVISED -
PLOT SCALE = 8.0000' / in.	CHECKED - JAC	REVISED -
PLOT DATE = 1/27/2014	DATE - 11-08-2013	REVISED -

**STATE OF ILLINOIS
DEPARTMENT OF TRANSPORTATION**

**US 67 OVER MISSISSIPPI RIVER STRUCTURE NO. 081-9905
MAINTENANCE OF PEDESTRIAN TRAFFIC DETAILS**

SCALE: NTS SHEET NO. 9 OF 47 SHEETS STA. N/A TO STA. N/A

F.A.P. RTE.	SECTION	COUNTY	TOTAL SHEETS	SHEET NO.
308	(3BRM)	ROCK ISLAND	47	9
C-92-090-12		CONTRACT NO. 64H28		
ILLINOIS FED. AID PROJECT HSIP-XXXX (XXX)				