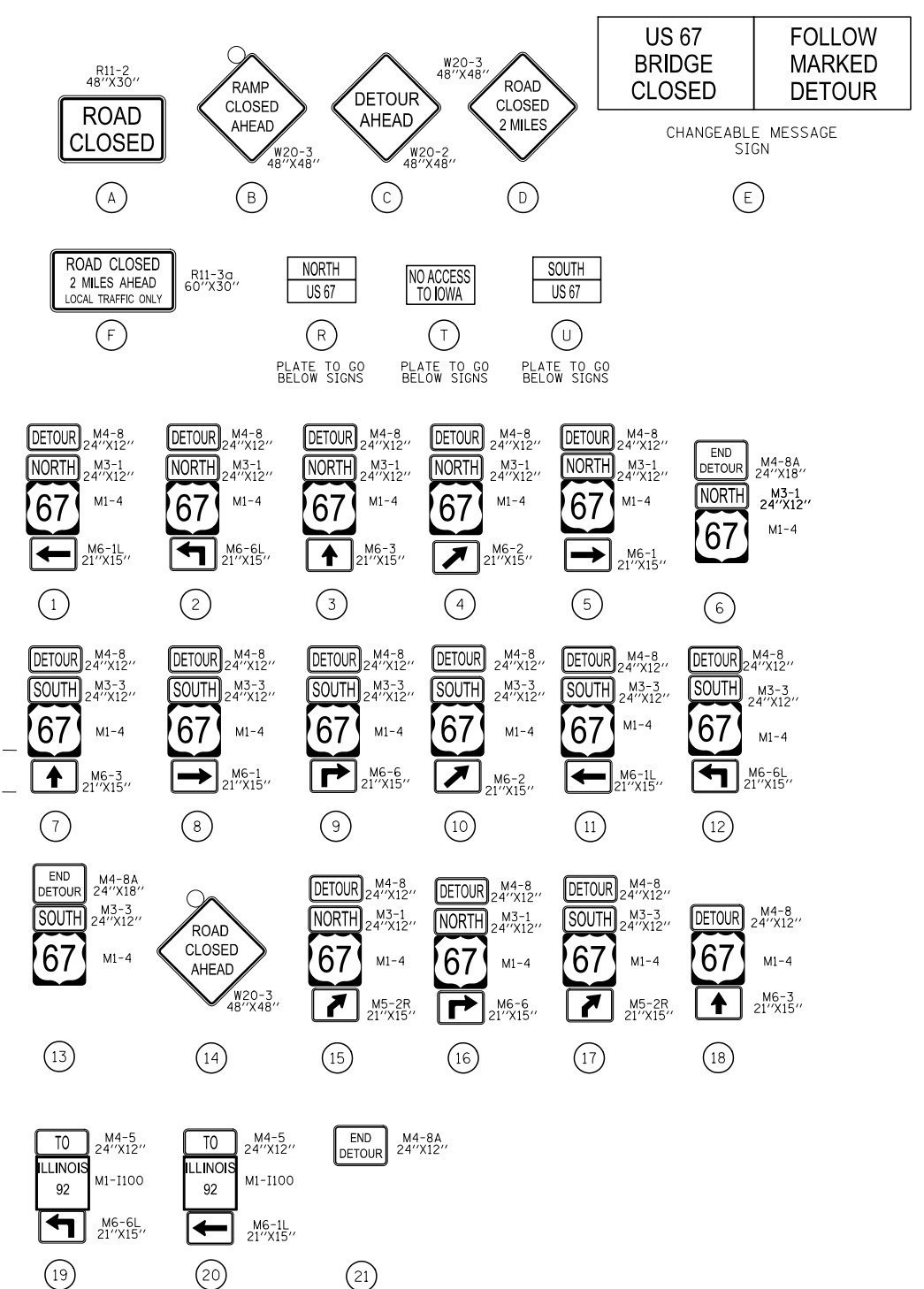
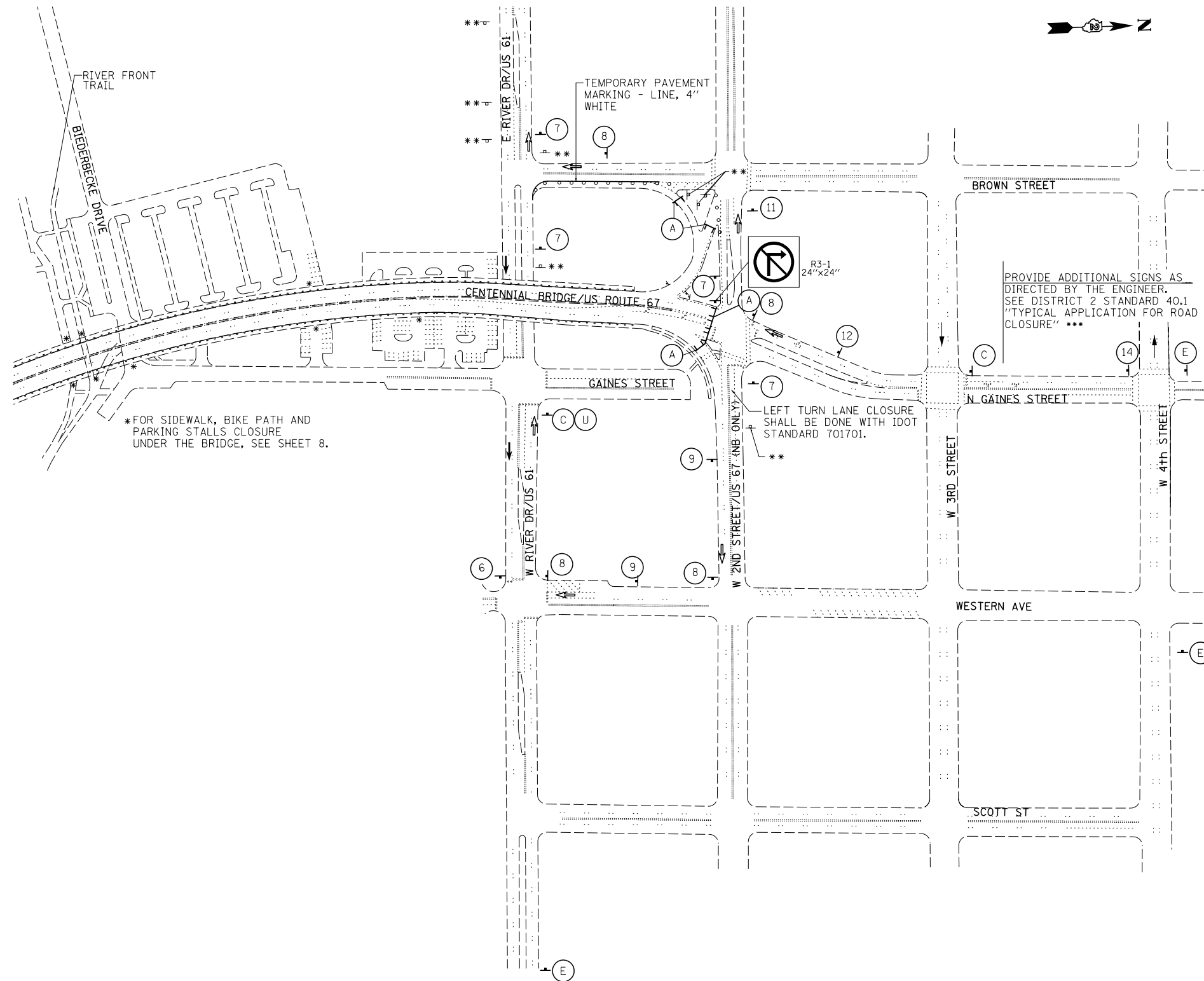


FILE NAME : I:\Projects\4015550\4015550_0801\90_CAD_Models_and_Sheets\04_C.Civil\Sheets\0264H28-Detour_Comp_Iowa.dgn



*** THE COST OF THIS WORK WILL NOT BE PAID FOR SEPARATELY. IT SHALL BE INCLUDED IN THE CONTRACT UNIT PRICE OF TRAFFIC CONTROL AND PROTECTION (SPECIAL).

** COVER EXISTING DIRECTIONAL ROUTE SIGNS DURING DETOUR TIMES.
 NOTE:
 SEE SHEET 9 FOR PEDESTRIAN TRAFFIC CONTROL STAGING NOTES.

USER NAME = thompsrd	DESIGNED - RDT/GC	REVISED -
DRAWN - RDT	REVISOR -	REVISED -
PLOT SCALE = 200.0000' / in.	CHECKED - JAC	REVISED -
PLOT DATE = 1/21/2014	DATE - 11-08-2013	REVISED -

**STATE OF ILLINOIS
 DEPARTMENT OF TRANSPORTATION**

**US 67 OVER MISSISSPPI RIVER STRUCTURE NO. 081-9905
 DETAIL FOR COMPLETE ROAD CLOSURE - IOWA SIDE**

SCALE: 1" = 100' SHEET NO. 7 OF 47 SHEETS STA. TO STA.

F.A.P. RTE.	SECTION	COUNTY	TOTAL SHEETS	SHEET NO.
308	(3BRM	ROCK ISLAND	47	7
C-92-090-12		CONTRACT NO. 64H28		
ILLINOIS FED. AID PROJECT HSIP-XXXX (XXX)				