

STATE OF ILLINOIS
DEPARTMENT OF TRANSPORTATION
DIVISION OF HIGHWAYS

**PROPOSED
HIGHWAY PLANS**

FAP 505 (IL 75)
SECTION (W-15D)T-2
PROJECT: ACF-0505(026)
BOX CULVERT REPLACEMENT
WINNEBAGO COUNTY
C-92-085-13

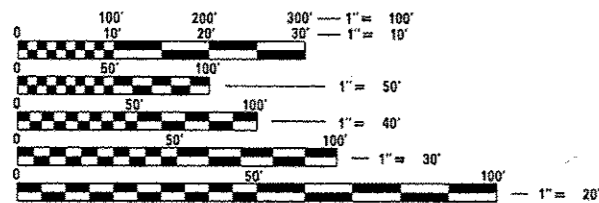
F.A.P. RTE.	SECTION	COUNTY	TOTAL SHEETS	SHEET NO.
505	(W-15D)T-2	WINNEBAGO	41	1
		ILLINOIS	CONTRACT NO. 64H04	

FOR INDEX OF SHEETS, SEE SHEET NO. 2
FOR STATE STANDARDS, SEE SHEET NO. 2

HARRISON TOWNSHIP SECTION 20

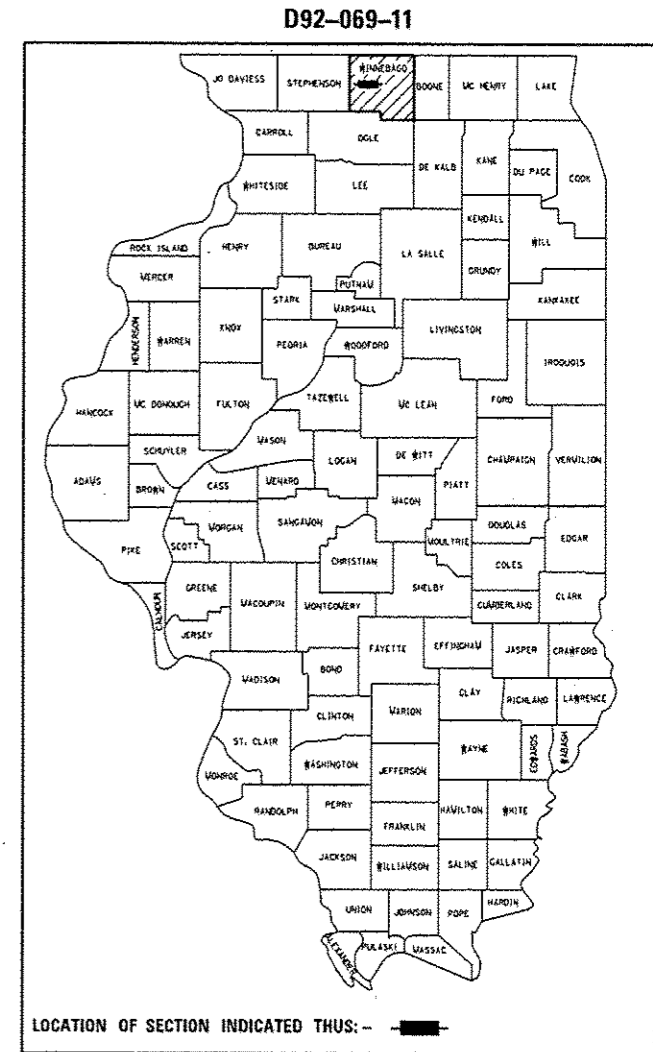
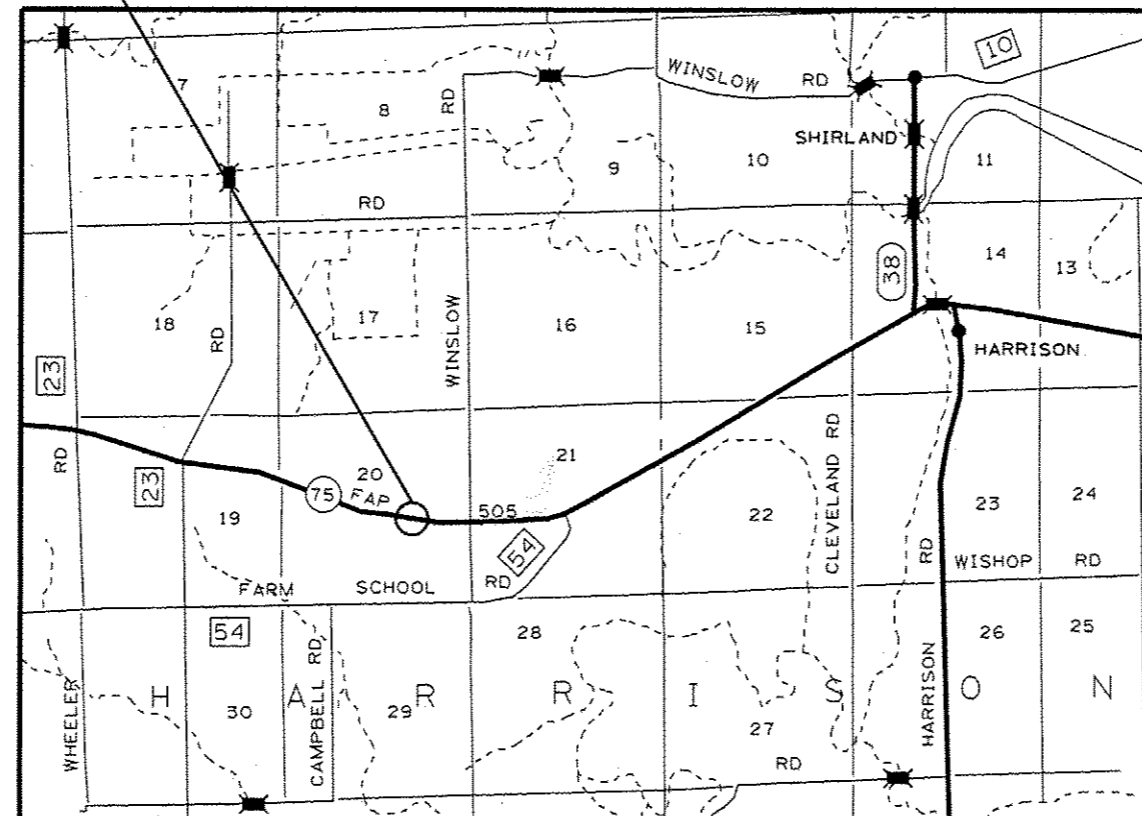
EXISTING SN 101-1039
PROPOSED SN 101-1236
STA 412+60.5
REMOVE EXISTING DOUBLE 3'X2.5' BOX CULVERT
AND CONSTRUCT 7'X4' BOX CULVERT

IMPROVEMENT BEGINS STA 409+32.5
IMPROVEMENT ENDS STA 415+67.5
PROJECT BEGINS STA 410+00
PROJECT ENDS STA 415+00



FULL SIZE PLANS HAVE BEEN PREPARED USING STANDARD ENGINEERING SCALES. REDUCED SIZED PLANS WILL NOT CONFORM TO STANDARD SCALES. IN MAKING MEASUREMENTS ON REDUCED PLANS, THE ABOVE SCALES MAY BE USED.

J.U.L.I.E.
JOINT UTILITY LOCATION INFORMATION FOR EXCAVATION
1-800-892-0123
OR 811



PROJECT ENGINEER: MASOOD AHMAD
SENIOR SQUAD LEADER: SAMEER ABDULLAH (815) 284-5935
STUDIES AND PLAN SQUAD ENGINEER: COREY CONDERMAN (815) 284-5936
CONTRACT NO. 64H04

GROSS LENGTH = 500 ft. = 0.09 MILE
NET LENGTH = 500 ft. = 0.09 MILE

STATE OF ILLINOIS
DEPARTMENT OF TRANSPORTATION
DIVISION OF HIGHWAYS

SUBMITTED Dec 2 2013
Paul A. Lotter
DEPUTY DIRECTOR OF HIGHWAYS, REGION ENGINEER

Jan 24 2014
John D. Baranzelli, P.E., B.C.
ENGINEER OF DESIGN AND ENVIRONMENT

Jan 24 2014
Omer Osman, P.E., B.C.
DIRECTOR OF HIGHWAYS, CHIEF ENGINEER

PRINTED BY THE AUTHORITY
OF THE STATE OF ILLINOIS