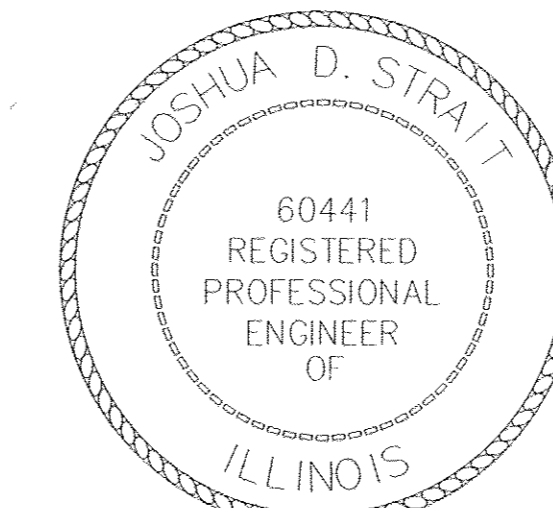


HIGHWAY STANDARDS, SEE SHEET NO. 2

STATE OF ILLINOIS
 DEPARTMENT OF TRANSPORTATION
 DIVISION OF HIGHWAYS
**PLANS FOR PROPOSED
 FEDERAL AID HIGHWAY**
 FAU ROUTE 3573 (CENTER DRIVE)
 WOODRIDGE DRIVE TO JANES AVENUE
 RESURFACING
 SECTION: 11-00068-00-RS
 PROJECT NO: M-9003(882)
 VILLAGE OF WOODRIDGE
 DUPAGE COUNTY
 JOB NO: C-91-120-12



Joshua D. Strait
 12/12/13
 ILLINOIS LICENSED PROFESSIONAL ENGINEER NO. 60441
 LICENSE VALID THROUGH NOVEMBER 30, 2015

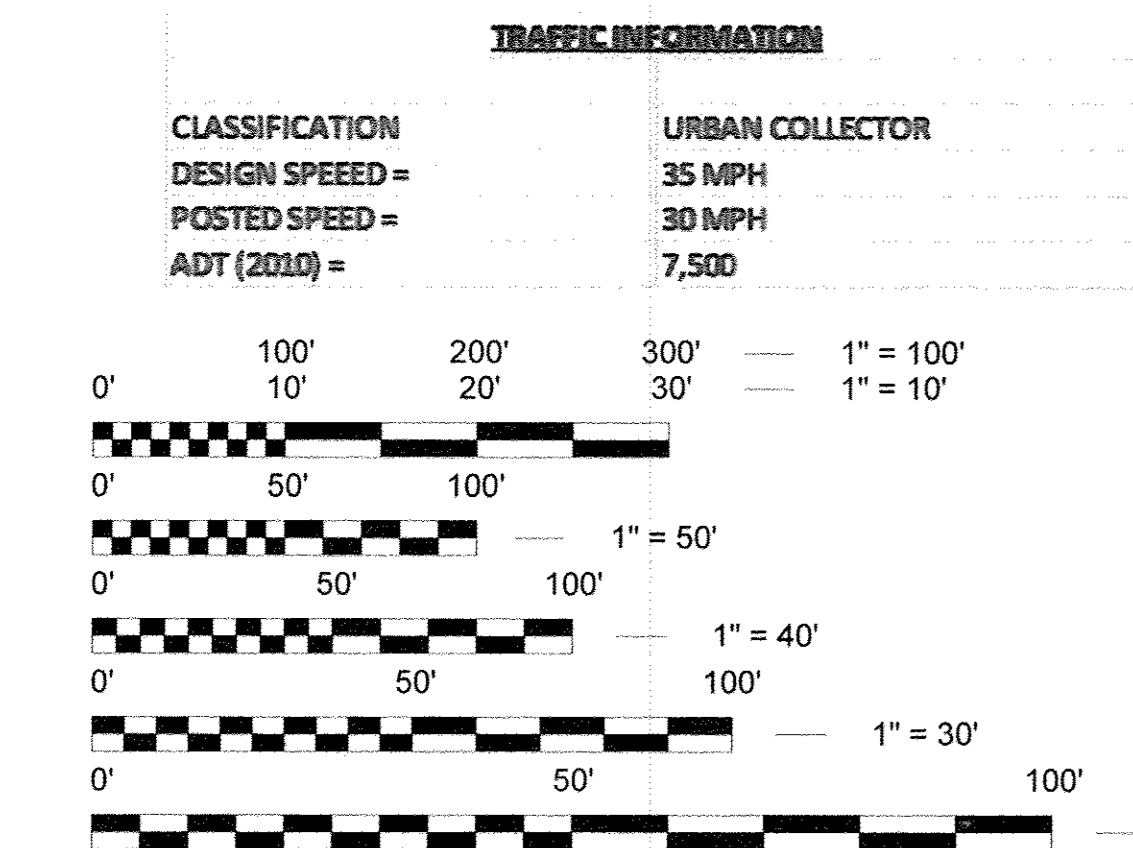


LOCATION OF SECTION INDICATED THUS

INDEX OF SHEETS	
SHEET #	DESCRIPTION
1	COVER
2	GENERAL NOTES AND STANDARDS
3	SUMMARY OF QUANTITIES
4	EXISTING AND PROPOSED TYPICAL CROSS SECTIONS
5	SCHEDULES OF QUANTITIES
6-8	RESURFACING AND PAVEMENT MARKING PLANS
9	CENTER DRIVE/PLAZA DRIVE DETECTOR LOOP PLAN
10	CENTER DRIVE/JANES AVENUE DETECTOR LOOP PLAN
11	TC 10 TRAFFIC CONTROL AND PROTECTION FOR SIDE ROADS, INTERSECTIONS, AND DRIVEWAYS (DISTRICT 1)
12	TC 13 TYPICAL PAVEMENT MARKINGS (DISTRICT 1)
13	TC 16 PAVEMENT MARKING LETTER AND SYMBOLS FOR TRAFFIC STAGING (DISTRICT 1)
14	BD 24 CURB OR CURB AND GUTTER REMOVAL AND REPLACEMENT (DISTRICT 1)
15	BD 32 BUTT JOINT AND HMA TAPER DETAILS (DISTRICT 1)
16	TS 05 STANDARD TRAFFIC SIGNAL DESIGN DETAILS (DISTRICT 1)
17	TS 07 DETECTOR LOOP INSTALLATION DETAILS FOR ROADWAY RESURFACING (DISTRICT 1)

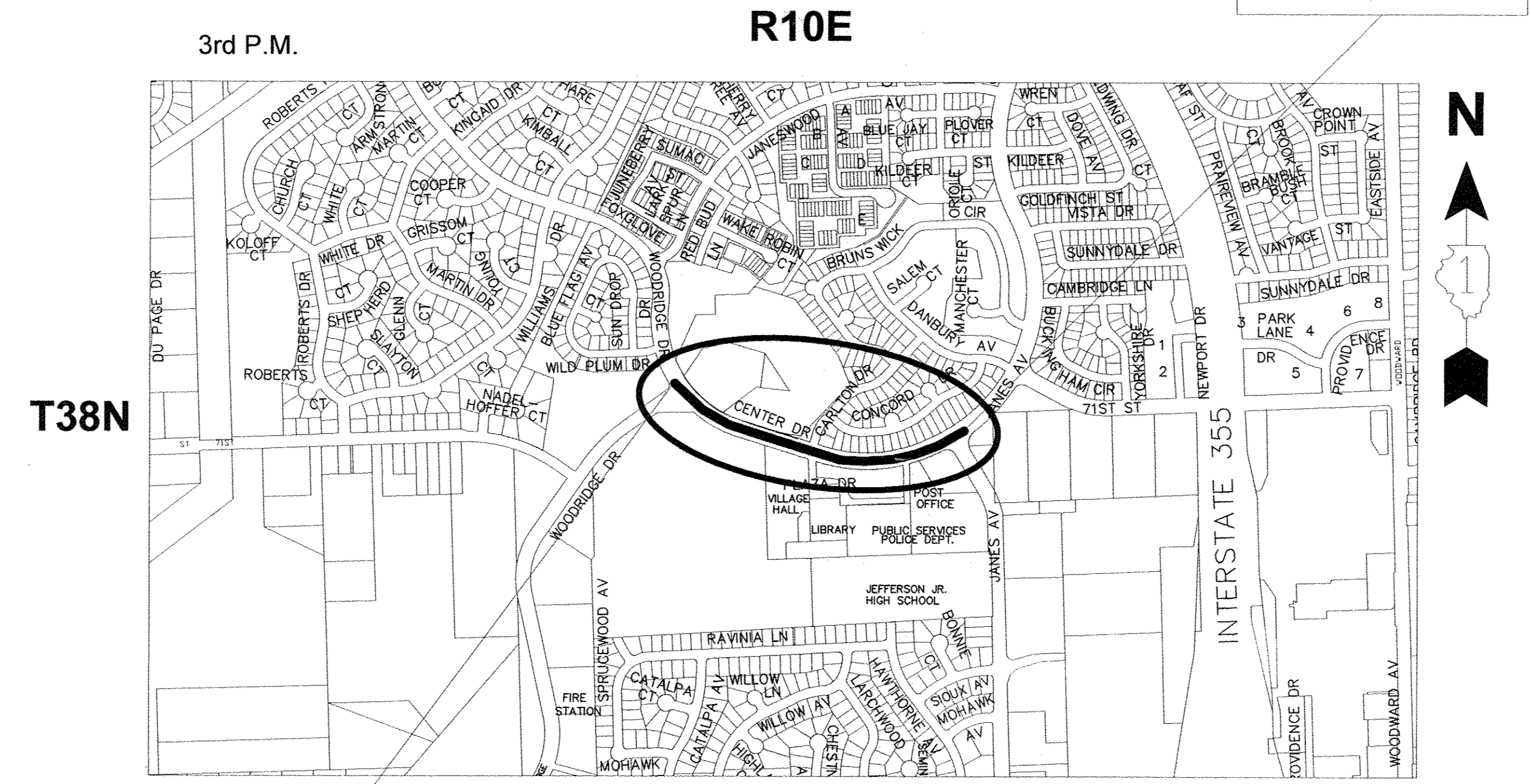
PROJECT IS LOCATED IN
 THE VILLAGE OF WOODRIDGE

END STA. 221+15



FULL SIZE PLANS HAVE BEEN PREPARED USING STANDARD ENGINEERING SCALES. REDUCED SIZED PLANS WILL NOT CONFORM TO STANDARD SCALES. IN MAKING MEASUREMENTS ON REDUCED PLANS, THE ABOVE SCALES MAY BE USED.

PLANS PREPARED BY:
VILLAGE OF WOODRIDGE
 DEPARTMENT OF PUBLIC WORKS



LOCATION MAP IS NOT TO SCALE

BEGIN STA. 200+77

GROSS AND NET LENGTH =
 1,956 FEET (0.37 MI)

STATE OF ILLINOIS
 DEPARTMENT OF TRANSPORTATION
 DIVISION OF HIGHWAYS

Approved 12/12/13, 2013
C. B.
 VILLAGE OF WOODRIDGE, DIRECTOR OF PUBLIC WORKS

Passed DECEMBER 17, 2013
C. H. T.
 DISTRICT 1 ENGINEER OF LOCAL ROADS AND STREETS

Released for Bid
 Based on Limited
 Review December 17, 2013
John F. ...
 DEPUTY DIRECTOR OF HIGHWAYS, REGION 1 ENGINEER

PRINTED BY THE AUTHORITY
 OF THE STATE OF ILLINOIS

PROGRAM AND OFFICE ENGINEER: CHARLES F. RIDDLE, P.E. 847-705-4406 SCHAUMBURG, IL

J.U.L.I.E
 JOINT UTILITY LOCATION INFORMATION FOR EXCAVATION
 1-800-892-0123 OR 811

CONTRACT 63894

F.A.U.	COUNTY	SECTION	TOTAL SHEETS	SHEET #
3573	DUPAGE	11-00068-00-RS	17	1