

- WHEN CONNECTING TO AN EXISTING SANITARY MAIN WHEN A TEE OR WYE IS NOT PROVIDED, A SEWER SADDLE MUST BE INSTALLED. THE MINIMUM DISTANCE BETWEEN FITTINGS IS FOUR (4) FEET CENTER TO CENTER. DISRUPTION OF ANY EXISTING SANITARY MAIN BY BREAKING OR CUTTING IN A WYE/TEE IS PROHIBITED UNLESS THE EXISTING MAIN IS CRACKED OR BROKEN AT THE POINT OF CONNECTION WITH THE SERVICE SADDLE. THE ENGINEER SHALL DETERMINE THE EXISTING MAIN REPAIR OR REPLACEMENT REQUIRED ON A CASE BY CASE BASIS PRIOR TO CONNECTION, CONSTRUCTION OR INSTALLATION.
- ALL SANITARY SEWERS WILL BE SUBJECT TO AN AIR EXFILTRATION TEST. TELEVISION TEST AND DEFLECTION TEST TO BE PERFORMED BY THE CONTRACTOR UNDER THE SUPERVISION OF THE ENGINEER. ALL TESTING WILL BE DONE IN CONFORMANCE WITH THE "STANDARD SPECIFICATIONS FOR WATER AND SEWER MAIN CONSTRUCTION IN ILLINOIS", LATEST EDITION, AND VILLAGE OF CARY REQUIREMENTS.
- VACUUM TESTING OF EACH MANHOLE SHALL BE CARRIED OUT IMMEDIATELY AFTER ASSEMBLY AND PRIOR TO BACKFILLING, ALL LIFT HOLES SHALL BE PLUGGED WITH AN APPROVED NON-SHRINK GROUT.
- NO GROUT WILL BE PLACED IN THE HORIZONTAL JOINTS BEFORE TESTING. ALL PIPES ENTERING THE MANHOLE SHALL BE PLUGGED, TAKING CARE TO SECURELY BRACE THE PLUGS FROM BEING DRAWN INTO THE MANHOLE.
- THE TESTING HEAD SHALL BE PLACED AT THE INSIDE OF THE TOP OF THE FRAME SECTION AND THE SEAL INFLATED IN ACCORDANCE WITH THE MANUFACTURERS RECOMMENDATION.
- A VACUUM OF 10 INCHES OF MERCURY SHALL BE DRAWN AND THE VACUUM PUMP SHUT OFF WITH THE VALVES CLOSED, THE TIME SHALL BE MEASURED FOR THE VACUUM TO DROP TO 9 INCHES. THE MANHOLE SHALL PASS IF THE TIME IS GREATER THAN 60 SECONDS FOR A 48 INCH DIAMETER MANHOLE, 75 SECONDS FOR A 60 INCH MANHOLE AND 90 SECONDS FOR A 72 INCH MANHOLE. IF THE MANHOLE FAILS THE INITIAL TEST, NECESSARY REPAIRS SHALL BE MADE WITH A NON-SHRINK GROUT WHILE THE VACUUM IS STILL BEING DRAWN. RETESTING SHALL PROCEED UNTIL A SATISFACTORY TEST IS OBTAINED.
- ALL COVERS USED FOR SANITARY SEWERS SHALL HAVE A MACHINED SURFACE AND A WATERTIGHT RUBBER GASKET SEAL. FULL FRAME SEAL SHALL BE AN APPROVED SEALANT, TROWEL MASTIC OVER FULL SURFACE BETWEEN FRAMES, ADJUSTING RINGS AND CONES.

BACKFILL

- STORM SEWER, WATER MAIN, AND SANITARY SEWER SHALL BE BACK FILLED IN ACCORDANCE WITH ARTICLE 550.07, METHOD 1 ONLY.
- PROVIDE TRENCH BACKFILL FOR ALL UTILITY LINES WITHIN 2' OF PAVED AREAS. ALL TRENCH BACKFILL QUANTITIES FOR STORM SEWER HAVE BEEN COMPUTED AND SHALL BE PAID FOR IN ACCORDANCE WITH THE STATE OF ILLINOIS DEPARTMENT OF TRANSPORTATION DIVISION OF HIGHWAYS BUREAU OF CONSTRUCTION TRENCH BACKFILL TABLE, BASED ON PIPE SIZE. DEPTH WILL BE CALCULATED AS INVERT DEPTH FROM SURFACE ELEVATION.
- TRENCH BACKFILL AND AGGREGATE SHOULDER MATERIAL SHALL CONSIST OF CA-6 MATERIAL.

SIGNING AND STRIPING

- SEE IDOT STANDARD DETAIL 780001, DISTRICT ONE DETAIL AND PLAN SHEETS FOR PAVEMENT MARKING DETAILS.
- SIGNS SHALL NOT BE MOVED OR COVERED UNTIL PROGRESS OF WORK NECESSITATES IT.
- THE CONTRACTOR WILL BE REQUIRED TO TEMPORARILY RESET ALL SUCH SIGNS THAT INTERFERE WITH HIS CONSTRUCTION OPERATIONS. ALL SUCH SIGNS MUST BE MAINTAINED STRAIGHT AND CLEAN FOR THE DURATION OF THE TEMPORARY SETTING AND MUST BE RE-ERECTED AT A TEMPORARY LOCATION IN A WORKMANLIKE MANNER AND BE VISIBLE TO THE TRAFFIC FOR WHICH IT IS INTENDED. THIS WORK WILL NOT BE PAID FOR SEPARATELY, BUT SHALL BE INCLUDED IN THE UNIT BID PRICES OF THE CONTRACT.
- ALL SIGNS SHALL BE INSTALLED OR RELOCATED IN PERMANENT LOCATIONS AS THE ROADWAY IS COMPLETED. THIS WORK SHALL BE PAID FOR USING THE APPROPRIATE PAY ITEMS.
- ALL REMOVED SIGNS SHALL BE RETURNED TO THE VILLAGE OF CARY. CONTACT VILLAGE PUBLIC WORKS AT 847-639-0003 OR 454 CARY WOODS CIRCLE, CARY, IL.
- LONGER POSTS MAY BE REQUIRED AT SOME TEMPORARY OR PERMANENT SIGN LOCATIONS TO MAINTAIN PROPER SIGN ELEVATIONS. THIS WORK SHALL BE PAID FOR IN ACCORDANCE WITH SECTION 729 OF THE STANDARD SPECIFICATIONS.

TRAFFIC CONTROL

- SEE TRAFFIC CONTROL PLANS FOR GENERAL NOTES CONCERNING TRAFFIC CONTROL AND PROTECTION.

EROSION CONTROL PLANS

- SEE EROSION CONTROL PLANS FOR GENERAL NOTES CONCERNING EROSION CONTROL.

EARTHWORK

- PRIOR TO ANY EMBANKMENT PLACEMENT ALL VEGETATION AND UNSTABLE MATERIAL SHOULD BE REMOVED TO DEPTH ENCOUNTERED AND REPLACED WITH SUITABLE EMBANKMENT MATERIAL.
- SUBGRADE SHALL BE PREPARED IN ACCORDANCE WITH ARTICLE 301.03 OF THE STANDARD SPECIFICATIONS BEFORE REMOVAL OF ANY UNSTABLE MATERIAL.
- THE CONTRACTOR SHALL BE RESPONSIBLE FOR HIRING AN ENVIRONMENTAL FIRM WITH AT LEAST FIVE CLEANUPS OR THAT IS PRE-QUALIFIED IN HAZARDOUS WASTE BY THE DEPARTMENT TO REMEDIATE THE SOIL CONTAMINATION AND MONITOR FOR WORKER PROTECTION. THE GENERATOR NUMBER FOR MCHENRY COUNTY IS 1118995010.

STATE STANDARDS

STANDARD NO.	LIST OF DESCRIPTION
000001-06	STANDARD SYMBOLS, ABBREVIATIONS AND PATTERNS
280001-07	TEMPORARY EROSION CONTROL SYSTEMS
424001-07	PERPENDICULAR CURB RAMPS FOR SIDEWALKS
424006-01	DIAGONAL CURB RAMPS FOR SIDEWALKS
424011-01	CORNER PARALLEL CURB RAMPS FOR SIDEWALKS
424021-02	DEPRESSED CORNER FOR SIDEWALKS
424026-01	ENTRANCE / ALLEY PEDESTRIAN CROSSINGS
442201-03	CLASS C AND D PATCHES
542301-03	PRECAST REINFORCED CONCRETE FLARED END SECTION
602001-02	CATCH BASIN, TYPE A
602301-04	INLET, TYPE A
602401-03	MANHOLE, TYPE A
602501-02	VALVE VAULT, TYPE A
602601-03	PRECAST REINFORCED CONCRETE FLAT SLAB TOP
602701-02	MANHOLE STEPS
604001-03	FRAME AND LIDS, TYPE 1
604036-02	GRATE TYPE 8
604051-03	FRAME AND GRATE, TYPE 11
606001-05	CONCRETE CURB TYPE B AND COMBINATION CONCRETE CURB AND GUTTER
606201-02	TYPE B GUTTER (INLET, OUTLET AND ENTRANCE)
701006-05	OFF-RD OPERATIONS, 2L, 2W, 15' TO 24" FROM PAVEMENT EDGE
701011-04	OFF-RD MOVING OPERATIONS, 2L, 2W, DAY ONLY
701301-04	LANE CLOSURE, 2L, 2W, SHORT TIME OPERATIONS
701311-03	LANE CLOSURE, 2L, 2W, MOVING OPERATIONS - DAY ONLY
701501-06	URBAN LANE CLOSURE, 2L, 2W UNDIVIDED
701701-09	URBAN LANE CLOSURE, MULTILANE INTERSECTION
701801-05	SIDEWALK, CORNER OR CROSSWALK CLOSURE
701901-03	TRAFFIC CONTROL DEVICES
720001-01	SIGN PANEL MOUNTING DETAILS
720006-04	SIGN PANEL ERECTION DETAILS
720011-01	METAL POSTS FOR SIGNS, MARKERS AND DELINEATORS
729001-01	APPLICATIONS OF TYPES A & B METAL POSTS (FOR SIGNS AND MARKERS)
780001-04	TYPICAL PAVEMENT MARKINGS
781001-03	TYPICAL APPLICATIONS RAISED REFLECTIVE PAVEMENT MARKERS
805001-01	ELECTRICAL SERVICE INSTALLATION DETAILS
814001-02	HANDHOLES
814006-02	DOUBLE HANDHOLES
825021-02	LIGHTING CONTROLLER, BASE MOUNTED, 240V
830001-02	LIGHT POLE ALUMINUM MAST ARM
857001-01	STANDARD PHASE DESIGNATION DIAGRAMS AND PHASE SEQUENCES
862001-01	UNINTERRUPTIBLE POWER SUPPLY (UPS)
873001-02	TRAFFIC SIGNAL GROUNDING & BONDING
877001-05	STEEL MAST ARM ASSEMBLY AND POLE 16' THROUGH 55'
878001-09	CONCRETE FOUNDATION DETAILS
880001-01	SPAN WIRE MOUNTED SIGNALS AND FLASHING BEACON INSTALLATION
880006-01	TRAFFIC SIGNAL MOUNTING DETAILS
886001-01	DETECTOR LOOP INSTALLATION
877002-02	STEEL MAST ARM ASSEMBLY AND POLE 56' THROUGH 75'

DISTRICT ONE DETAILS

BD-01	DRIVEWAY DETAILS
BD-03	DISTANCE BETWEEN R.O.W. AND FACE OF CURB & EDGE OF SHOULDER >= 15' (4.5 M)
BD-07	OUTLET FOR CONCRETE CURB AND GUTTER
BD-12	60600095 CLASS ST CONCRETE (OUTLET) CU YD
BD-22	DETAIL OF STORM SEWER CONNECTION TO EXISTING SEWER
TC-10	MANHOLE WITH RESTRICTOR PLATE
TC-11	PAVEMENT PATCHING FOR HMA SURFACED PAVEMENT
TC-13	TRAFFIC CONTROL AND PROTECTION FOR SIDE ROADS, INTERSECTIONS, AND DRIVEWAYS
TC-16	TYPICAL APPLICATIONS RAISED REFLECTIVE PAVEMENT MARKERS (SNOW-PLOW RESISTANT)
TC-22	DISTRICT ONE TYPICAL PAVEMENT MARKINGS
TC-26	PAVEMENT MARKING LETTERS AND SYMBOLS FOR TRAFFIC STAGING
TC-26	ARTERIAL ROAD INFORMATION SIGN
TC-26	DRIVEWAY ENTRANCE SIGNING



HRGreen.com
#184-001322

USER NAME = jstrzeol	DESIGNED - JJS	REVISED - 2/11/2014
	DRAWN - DMS	REVISED -
PLOT SCALE = NTS	CHECKED - TEH	REVISED -
PLOT DATE = 2/11/2014	DATE -	REVISED -

**STATE OF ILLINOIS
DEPARTMENT OF TRANSPORTATION**

INDEX, GENERAL NOTES, AND LIST OF STATE STANDARDS

SCALE: NTS SHEET NO. 2 OF 2 SHEETS STA. TO STA.

F.A.U. RTE.	SECTION	COUNTY	TOTAL SHEETS	SHEET NO.
4058	13-00063-00-PV	MCHENRY	79	3
CONTRACT NO.			63886	
FED. ROAD DIST. NO. [ILLINOIS] FED. AID PROJECT				

8620013 of 8620013
8620013-001-01.dgn
2/11/2014 12:21:44 PM
#184-001322
HRGreen.com
#184-001322
PLOT DATE = 2/11/2014
PLOT SCALE = NTS
PLOT DWG: 13-00063-00-PV.dgn
PEN TABLE: standard-font.tbl

PAYCODE	ITEM DESCRIPTION	UNIT	TOTAL	ROADWAY 80%FEDERAL 20%STATE 0003	SIGNALS 80%FEDERAL 20%STATE 0021	LIGHTING 80%FEDERAL 20%STATE 0003	SANITARY 100% LOCAL 0043
20200100	EARTH EXCAVATION	CU YD	1530	1,530			
20201200	REMOVAL AND DISPOSAL OF UNSUITABLE MATERIAL	CU YD	2620	2,620			
20800150	TRENCH BACKFILL	CU YD	241	73			168
21101615	TOPSOIL FURNISH AND PLACE, 4"	SO YD	3375	3,375			
25000115	SEEDING, CLASS 1B	ACRE	0.75	0.75			
25000400	NITROGEN FERTILIZER NUTRIENT	POUND	63	63			
25000500	PHOSPHORUS FERTILIZER NUTRIENT	POUND	63	63			
25000600	POTASSIUM FERTILIZER NUTRIENT	POUND	63	63			
25100630	EROSION CONTROL BLANKET	SO YD	3380	3,380			
28000250	TEMPORARY EROSION CONTROL SEEDING	POUND	200	200			
28000305	TEMPORARY DITCH CHECKS	FOOT	24	24			
28000400	PERIMETER EROSION BARRIER	FOOT	1595	1,595			
28000500	INLET AND PIPE PROTECTION	EACH	6	6			
28000510	INLET FILTERS	EACH	10	10			
28100105	STONE RIPRAP, CLASS A3	SO YD	55	55			
28200200	FILTER FABRIC	SO YD	65	65			
30300112	AGGREGATE SUBGRADE IMPROVEMENT 12"	SO YD	4210	4,210			
31101200	SUBBASE GRANULAR MATERIAL, TYPE B 4"	SO YD	1265	1,265			
35102000	AGGREGATE BASE COURSE, TYPE B 8"	SO YD	75	75			
35501316	HOT-MIX ASPHALT BASE COURSE, 8"	SO YD	775	775			
40201000	AGGREGATE FOR TEMPORARY ACCESS	TON	263	263			
40600100	BITUMINOUS MATERIALS (PRIME COAT)	GALLON	1355	1,355			
40600895	CONSTRUCTING TEST STRIP	EACH	2	2			
40603335	HOT-MIX ASPHALT SURFACE COURSE, MIX "D", N50	TON	155	155			
40701881	HOT-MIX ASPHALT PAVEMENT (FULL-DEPTH), 10"	SO YD	3770	3,770			
42300200	PORTLAND CEMENT CONCRETE DRIVEWAY PAVEMENT, 6 INCH	SO YD	1035	1,035			
42400200	PORTLAND CEMENT CONCRETE SIDEWALK 5 INCH	SO FT	1035	1,035			
42400800	DETECTABLE WARNINGS	SO FT	60	60			
44000100	PAVEMENT REMOVAL	SO YD	2715	2,715			
44000200	DRIVEWAY PAVEMENT REMOVAL	SO YD	1045	1,045			
44000500	COMBINATION CURB AND GUTTER REMOVAL	FOOT	360	360			
44201771	CLASS D PATCHES, TYPE IV, 10 INCH	SO YD	100	100			
50300225	CONCRETE STRUCTURES	CU YD	23.2	23.2			
50300285	FORM LINER TEXTURED SURFACE	SO FT	770.0	770.0			
50800205	REINFORCEMENT BARS, EPOXY COATED	POUND	1740.0	1,740.0			
54213657	PRECAST REINFORCED CONCRETE FLARED END SECTIONS 12"	EACH	1	1			
550A0050	STORM SEWERS, CLASS A, TYPE 1 12"	FOOT	456	456			
550A0090	STORM SEWERS, CLASS A, TYPE 1 18"	FOOT	183	183			
† 56109424	DUCTILE IRON WATER MAIN FITTINGS 12" 45.00 DEGREE BEND	EACH	2	2			
† 56101158	DUCTILE IRON WATER MAIN REDUCER, 12" X 6"	EACH	1	1			
† 56100065	DUCTILE IRON WATER MAIN TEE, 12" X 12"	EACH	1	1			
† 56105200	WATER VALVES 12"	EACH	3	3			
† 56400500	FIRE HYDRANTS TO BE REMOVED	EACH	1	1			
† 56400820	FIRE HYDRANT WITH AUXILIARY VALVE AND VALVE BOX	EACH	1	1			
60107600	PIPE UNDERDRAINS 4"	FOOT	416	416			
60200805	CATCH BASINS, TYPE A, 4'-DIAMETER, TYPE B GRATE	EACH	3	3			
60201105	CATCH BASINS, TYPE A, 4'-DIAMETER, TYPE II FRAME AND GRATE	EACH	6	6			
60218400	MANHOLES, TYPE A, 4'-DIAMETER, TYPE I FRAME, CLOSED LID	EACH	2	2			
60236200	INLETS, TYPE A, TYPE B GRATE	EACH	2	2			

† SPECIALTY ITEM
* SPECIAL PROVISION

PAYCODE	ITEM DESCRIPTION	UNIT	TOTAL	ROADWAY 80%FEDERAL 20%STATE 0003	SIGNALS 80%FEDERAL 20%STATE 0021	LIGHTING 80%FEDERAL 20%STATE 0003	SANITARY 100% LOCAL 0043
60236800	INLETS, TYPE A, TYPE II FRAME AND GRATE	EACH	3	3			
60250200	CATCH BASINS TO BE ADJUSTED	EACH	1	1			
60249010	VALVE VAULTS, TYPE A, 6'-DIAMETER, TYPE I FRAME, CLOSED LID	EACH	3	3			
60600095	CLASS SI CONCRETE (OUTLET)	CU YD	6.0	6.0			
60600605	CONCRETE CURB, TYPE B	FOOT	230	230			
60603800	COMBINATION CONCRETE CURB AND GUTTER, TYPE B-6.12	FOOT	1605	1,605			
60605000	COMBINATION CONCRETE CURB AND GUTTER, TYPE B-6.24	FOOT	140	140			
† 66900200	NON-SPECIAL WASTE DISPOSAL	CU YD	650	650			
† 66900450	SPECIAL WASTE PLANS AND REPORT	L SUM	1	1			
† 66900530	SOIL DISPOSAL ANALYSIS	EACH	2	2			
67100100	MOBILIZATION	L SUM	1	1			
70106800	CHANGEABLE MESSAGE SIGN	CAL MO	18	18			
70300100	SHORT TERM PAVEMENT MARKING	FOOT	2650	2,650			
70300220	TEMPORARY PAVEMENT MARKING - LINE 4"	FOOT	10000	10,000			
70300280	TEMPORARY PAVEMENT MARKING - LINE 24"	FOOT	60	60			
70301000	WORK ZONE PAVEMENT MARKING REMOVAL	SO FT	4340	4,340			
† 72000100	SIGN PANEL - TYPE 1	SO FT	40	25	15		
† 72000200	SIGN PANEL - TYPE 2	SO FT (54)			(54)		
† 72900100	METAL POST - TYPE A	FOOT	44	44			
† 78000100	THERMOPLASTIC PAVEMENT MARKING - LETTERS AND SYMBOLS	SO FT	240	240			
† 78000200	THERMOPLASTIC PAVEMENT MARKING - LINE 4"	FOOT	4180	4,180			
† 78000400	THERMOPLASTIC PAVEMENT MARKING - LINE 6"	FOOT	910	910			
† 78000600	THERMOPLASTIC PAVEMENT MARKING - LINE 12"	FOOT	175	175			
† 78000650	THERMOPLASTIC PAVEMENT MARKING - LINE 24"	FOOT	105	105			
† 78100100	RAISED REFLECTIVE PAVEMENT MARKER	EACH	80	80			
78300100	PAVEMENT MARKING REMOVAL	SO FT	2340	2,340			
† 80400100	ELECTRIC SERVICE INSTALLATION	EACH	1			1	
† 80400200	ELECTRIC UTILITY SERVICE CONNECTION	L SUM	1			1	
† 80500020	SERVICE INSTALLATION-POLE MOUNTED	EACH	2		1	1	
† 81028200	UNDERGROUND CONDUIT, GALVANIZED STEEL, 2" DIA.	FOOT	885		730	155	
† 81028210	UNDERGROUND CONDUIT, GALVANIZED STEEL, 2 1/2" DIA.	FOOT (47)			(47)		
† 81028220	UNDERGROUND CONDUIT, GALVANIZED STEEL, 3" DIA.	FOOT	85		85		
† 81028240	UNDERGROUND CONDUIT, GALVANIZED STEEL, 4" DIA.	FOOT (397)			(397)		
† 81028350	UNDERGROUND CONDUIT, PVC, 2" DIA.	FOOT	15			15	
† 81400100	HANDHOLE	EACH	2		2		
† 81400200	HEAVY-DUTY HANDHOLE	EACH	4		4		
† 81400300	DOUBLE HANDHOLE	EACH	2		2		
† 81603055	UNIT DUCT, 600V, 3-IC NO.8, 1/C NO.8 GROUND, (XLP-TYPE USE), 1" DIA. POLYETHYLEN	FOOT	961			961	
† 81702400	ELECTRIC CABLE IN CONDUIT, 600V (XLP-TYPE USE) 3-1/C NO. 2	FOOT	15			15	
† 82500350	LIGHTING CONTROLLER, BASE MOUNTED, 240VOLT, 100AMP	EACH	1			1	
† 83007500	LIGHT POLE, ALUMINUM, 35 FT. M.H., 12 FT. MAST ARM	EACH	6			6	
† 83600352	LIGHT POLE FOUNDATION, METAL, II 1/2" BOLT CIRCLE, 8 5/8" X 6'	EACH	6			6	
† 83800105	BREAKAWAY DEVICE, TRANSFORMER BASE, 11.5 INCH BOLT CIRCLE	EACH	6			6	
† 85000200	MAINTENANCE OF EXISTING TRAFFIC SIGNAL INSTALLATION	EACH	1			1	
† 85100500	PAINT NEW TRAFFIC SIGNAL POST	EACH	3		3		
† 85100600	PAINT NEW MAST ARM AND POLE, UNDER 40 FOOT	EACH	1		1		
† 85100701	PAINT NEW MAST ARM AND POLE, 40 FOOT AND OVER	EACH	3		3		
† 86400100	TRANSCIEVER - FIBER OPTIC	EACH	1			1	
† 87300925	ELECTRIC CABLE IN CONDUIT, TRACER, NO. 14 IC	FOOT	(874.5)		(874.5)		
† 87301215	ELECTRIC CABLE IN CONDUIT, SIGNAL NO. 14 2C	FOOT	770.5		770.5		

7/11/2014 1:48:11 PM
8612023-sum-01.dgn
PLOT DATE = 7/11/2014
PLOT DRIVER =
PEN TABLE =



HRGreen.com
Black Professional Design Firm
#184-001322

USER NAME = jstrzel
PLOT SCALE = NTS
PLOT DATE = 7/11/2014

DESIGNED - JJS
DRAWN - DMS
CHECKED - TEH
DATE -

REVISED - 2/11/2014
REVISED -
REVISED -
REVISED -

STATE OF ILLINOIS
DEPARTMENT OF TRANSPORTATION

SUMMARY OF QUANTITIES

SCALE: NTS SHEET NO. 1 OF 2 SHEETS STA. TO STA.

F.A.U. RTE. 4058	SECTION 13-00063-00-PV	COUNTY MCHENRY	TOTAL SHEETS 79	SHEET NO. 4
CONTRACT NO. 63886			FED. ROAD DIST. NO. [ILLINOIS] FED. AID PROJECT	

PAYCODE	ITEM DESCRIPTION	UNIT	TOTAL	ROADWAY 80%FEDERAL 20%STATE 0003	SIGNALS 80%FEDERAL 20%STATE 0021	LIGHTING 80%FEDERAL 20%STATE 0003	SANITARY 100% LOCAL 0043
† 87301225	ELECTRIC CABLE IN CONDUIT, SIGNAL NO. 14 3C	FOOT	1,387		1,387		
† 87301245	ELECTRIC CABLE IN CONDUIT, SIGNAL NO. 14 5C	FOOT	2,026		2,026		
† 87301255	ELECTRIC CABLE IN CONDUIT, SIGNAL NO. 14 7C	FOOT	885		885		
† 87301305	ELECTRIC CABLE IN CONDUIT, LEAD-IN NO. 14 1 PAIR	FOOT	1,420.5		1,420.5		
† 87301805	ELECTRIC CABLE IN CONDUIT, SERVICE, NO. 6 2 C	FOOT	71		71		
† 87301900	ELECTRIC CABLE IN CONDUIT, EQUIPMENT GROUNDING CONDUCTOR, NO. 6 1C	FOOT	982		982		
† 87502480	TRAFFIC SIGNAL POST, GALVANIZED STEEL 14 FT.	EACH	1		1		
† 87502500	TRAFFIC SIGNAL POST, GALVANIZED STEEL 16 FT.	EACH	2		2		
† 87700160	STEEL MAST ARM ASSEMBLY AND POLE, 24 FT.	EACH	1		1		
† 87700240	STEEL MAST ARM ASSEMBLY AND POLE, 40 FT.	EACH	1		1		
† 87700250	STEEL MAST ARM ASSEMBLY AND POLE, 42 FT.	EACH	1		1		
† 87700400	STEEL MAST ARM ASSEMBLY AND POLE, 60 FT.	EACH	1		1		
† 87800100	CONCRETE FOUNDATION, TYPE A	FOOT	12.0		12.0		
† 87800150	CONCRETE FOUNDATION, TYPE C	FOOT	4.0		4.0		
† 87800400	CONCRETE FOUNDATION, TYPE E 30-INCH DIAMETER	FOOT	10.0		10.0		
† 87800415	CONCRETE FOUNDATION, TYPE E 36-INCH DIAMETER	FOOT	26.0		26.0		
† 87800420	CONCRETE FOUNDATION, TYPE E 42-INCH DIAMETER	FOOT	21.0		21.0		
† 87900200	DRILL EXISTING HANDHOLE	EACH	1		1		
† 88030020	SIGNAL HEAD, LED, 1-FACE, 3-SECTION, MAST-ARM MOUNTED	EACH	7		7		
† 88030050	SIGNAL HEAD, LED, 1-FACE, 3-SECTION, BRACKET MOUNTED	EACH	1		1		
† 88030100	SIGNAL HEAD, LED, 1-FACE, 5-SECTION, BRACKET MOUNTED	EACH	2		2		
† 88030110	SIGNAL HEAD, LED, 1-FACE, 5-SECTION, MAST-ARM MOUNTED	EACH	3		3		
† 88030240	SIGNAL HEAD, LED, 2-FACE, 1-3 SECTION, BRACKET MOUNTED	EACH	1		1		
† 88102717	PEDESTRIAN SIGNAL HEAD, LED, 1-FACE, BRACKET MOUNTED WITH COUNTDOWN TIMER	EACH	4		4		
† 88200110	TRAFFIC SIGNAL BACKPLATE, LOUVERED	EACH	10		10		
† 88500100	INDUCTIVE LOOP DETECTOR	EACH	7		7		
† 88600100	DETECTOR LOOP, TYPE 1	FOOT	633.0		633.0		
† 88700200	LIGHT DETECTOR	EACH	2				2
† 88700300	LIGHT DETECTOR AMPLIFIER	EACH	1				1
† 88800100	PEDESTRIAN PUSH-BUTTON	EACH	4		4		
† 89000100	TEMPORARY TRAFFIC SIGNAL INSTALLATION	EACH	1		1		
† 89502300	REMOVE ELECTRIC CABLE FROM CONDUIT	FOOT	890.0		890.0		
† 89502375	REMOVE EXISTING TRAFFIC SIGNAL EQUIPMENT	EACH	1		1		
† 89502380	REMOVE EXISTING HANDHOLE	EACH	7		7		
† 89502382	REMOVE EXISTING DOUBLE HANDHOLE	EACH	1		1		
† 89502385	REMOVE EXISTING CONCRETE FOUNDATION	EACH	8		8		
Z0013798	CONSTRUCTION LAYOUT	L SUM	1	1			
• Z0018700	DRAINAGE STRUCTURE TO BE REMOVED	EACH	1	1			
• Z0019500	DRYWELL	EACH	1	1			
• Z0030850	TEMPORARY INFORMATION SIGNING	SO FT	113	113			
† Z0033044	RE-OPTIMIZE TRAFFIC SIGNAL SYSTEM LEVEL 1	EACH	1		1		
† Z0058300	SANITARY SEWER, TYPE 1, 8"	FOOT	155				155
† Z0058500	SANITARY SEWER, TYPE 1, 12"	FOOT	162				162
† Z0062456	TEMPORARY PAVEMENT	SO YD	790	790			
† Z0073510	TEMPORARY TRAFFIC SIGNAL TIMING	EACH	1		1		
Δ Z0076600	TRAINEES	HOUR	500	500			
Δ Z0076604	TRAINEES TRAINING PROGRAM GRADUATE	HOUR	500	500			
† X0324085	EMERGENCY VEHICLE PRIORITY SYSTEM SENSOR CABLE, NO. 20 3/C	FOOT	588.5				588.5
† X0325003	REMOVE EXISTING VALVE AND VAULT	EACH	1		1		
† X0327367	STEEL CASING PIPE, BORED AND JACKED, 24"	FOOT	123				123
• X4022000	TEMPORARY ACCESS (COMMERCIAL ENTRANCE)	EACH	10	10			
• X4023000	TEMPORARY ACCESS (ROAD)	EACH	4	4			
X5121800	PERMANENT STEEL SHEET PILING	SO FT	2002	2,002			

PAYCODE	ITEM DESCRIPTION	UNIT	TOTAL	ROADWAY 80%FEDERAL 20%STATE 0003	SIGNALS 80%FEDERAL 20%STATE 0021	LIGHTING 80%FEDERAL 20%STATE 0003	SANITARY 100% LOCAL 0043
† X5610712	WATER MAIN REMOVAL, 12"	FOOT	100	100			
† X5611106	DUCTILE IRON WATER MAIN, CLASS 52 WITH POLYETHYLENE ENCASEMENT, 6"	FOOT	10	10			
† X5611112	DUCTILE IRON WATER MAIN, CLASS 52 WITH POLYETHYLENE ENCASEMENT, 12"	FOOT	144	144			
• X6020094	MANHOLES, TYPE A, 6'-DIAMETER, TYPE 1 FRAME, CLOSED LID, RESTRICTOR PLATE	EACH	1	1			
† X6022810	MANHOLES, SANITARY, 4'-DIAMETER, TYPE 1 FRAME, CLOSED LID	EACH	5				5
• X7010216	TRAFFIC CONTROL AND PROTECTION, (SPECIAL)	L SUM	1	1			
† X8570226	FULL-ACTUATED CONTROLLER AND TYPE IV CABINET, SPECIAL	EACH	1		1		
† X8620200	UNINTERRUPTIBLE POWER SUPPLY, SPECIAL	EACH	1		1		
† X8710024	FIBER OPTIC CABLE IN CONDUIT, NO. 62.5/125, MM12F SM24F	FOOT	300.5		300.5		
† XX007797	LUMINAIRE (SPECIAL)	EACH	6				6

† SPECIALTY ITEM
• SPECIAL PROVISION
XCONSTRUCTION TYPE CODE 0042
Δ 0042

2/11/2014 2:05:07 PM
FILE PLOTTED:
PLOT DRIVER:
PEN TABLE:
#104-001322

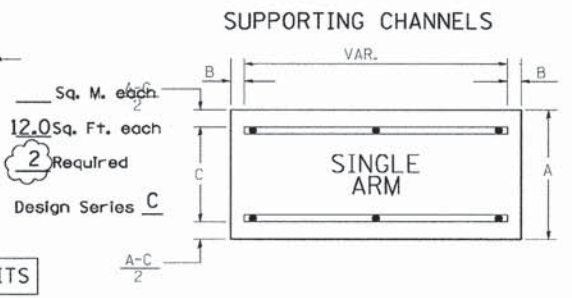
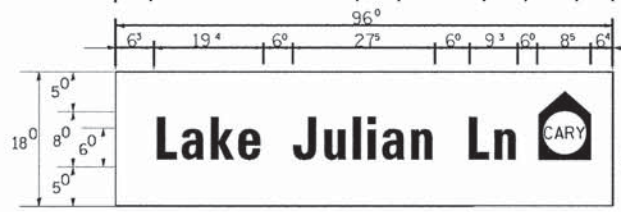
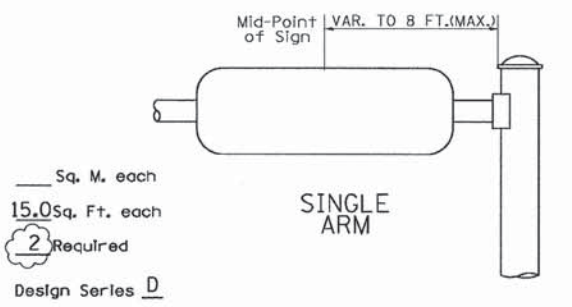
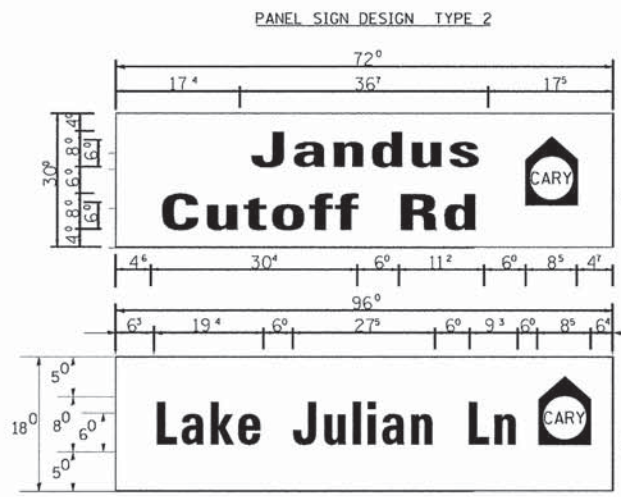
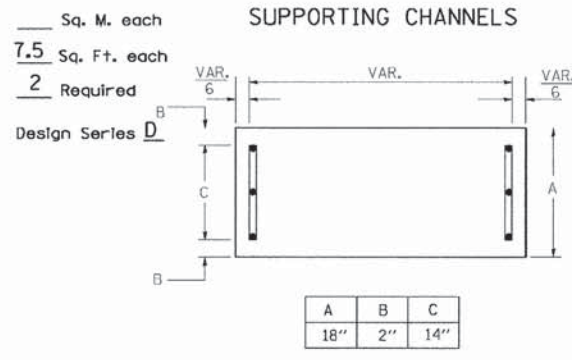
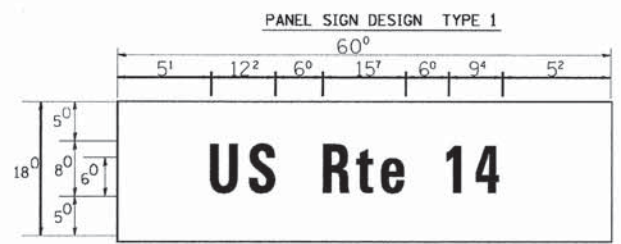


USER NAME = jstrzol	DESIGNED - JJS	REVISED - 2/11/2014
PLOT SCALE = NTS	DRAWN - DMS	REVISED -
PLOT DATE = 2/11/2014	CHECKED - TEH	REVISED -
	DATE -	REVISED -

STATE OF ILLINOIS
DEPARTMENT OF TRANSPORTATION

SUMMARY OF QUANTITIES			
F.A.U. RTE.	SECTION	COUNTY	TOTAL SHEETS
4058	13-00063-00-PV	MCHENRY	79
			5
			CONTRACT NO. 63886

SCALE: NTS	SHEET NO. 2 OF 2 SHEETS	STA. TO STA.
FED. ROAD DIST. NO. ILLINOIS FED. AID PROJECT		



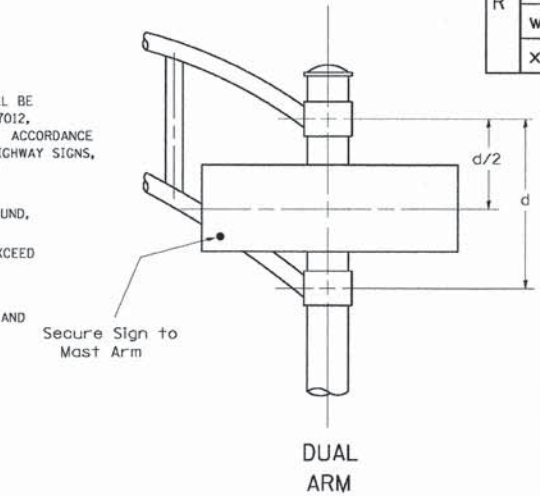
NOTE: SIGN DIMENSIONS ARE IN ENGLISH UNITS

GENERAL NOTES

- WHERE MAST ARM MOUNTED STREET NAME SIGNS ARE SPECIFIED, THE MAST ARM ASSEMBLY AND POLES SHALL BE DESIGNED TO SUPPORT THE LOADINGS CALLED FOR ON STANDARDS 877001, 877002, 877006, 877011 AND 877012, AS APPLICABLE, PLUS TWO (2) SIGN PANELS 2'-6" x 8'-0" MOUNTED AS SHOWN. THE DESIGN SHALL BE IN ACCORDANCE WITH THE REQUIREMENTS OF THE CURRENT "STANDARD SPECIFICATIONS FOR STRUCTURAL SUPPORTS FOR HIGHWAY SIGNS, LUMINAIRES, AND TRAFFIC SIGNALS" AS PUBLISHED BY THE AMERICAN ASSOCIATION OF STATE HIGHWAY AND TRANSPORTATION OFFICIALS FOR 80 M.P.H. WIND VELOCITY.
- ALL SIGNS SHALL HAVE A WHITE REFLECTORIZED LEGEND AND BORDER ON A GREEN REFLECTORIZED BACKGROUND, TYPE A SHEETING.
- THE SIGN LENGTH SHOULD BE INCREASED IN 6-INCH INCREMENTS, BUT THE OVERALL LENGTH SHOULD NOT EXCEED 8'-0".
- ALL BORDERS SHALL BE 3/4" WIDE AND CORNER RADIUS SHALL BE 2-1/4".
- SIGNFIX ALUMINUM CHANNEL FRAMING SYSTEM SHALL BE USED FOR ALL SIGNS ATTACHED TO SIGNAL POLES AND POSTS. LOCAL SUPPLIERS OF THE SIGNFIX ALUMINUM CHANNEL FRAMING SYSTEM ARE:
 - * J.O. HERBERT CO. MIDLOTHIAN, VA.
 - * WESTERN REMAC INC. WOODRIDGE, IL.

PARTS LISTING:
 SIGN CHANNEL PART #HPN053 (MED. CHANNEL)
 SIGN SCREWS 1/4" x 14 x 1" H.W.H. #3
 SELF TAPPING WITH NEOPRENE WASHER
 BRACKETS PART #HPN034 (UNIVERSAL)
 CHANNEL CLAMPS WITH STAINLESS STEEL STRAPPING

OTHER BRANDS OF MOUNTING HARDWARE ARE ACCEPTABLE, BASED UPON THE DEPARTMENT'S APPROVAL AND COMPATIBILITY WITH THE CHANNEL/BACKET OF THE ABOVE PRODUCT.



SIGNFIX ALUMINUM CHANNEL FRAMING SYSTEM shall be used. See Note #5.

Upper Case To Lower Case Spacing Chart 8-6 Inch Series "C & D"

SERIES	SECOND LETTER															
	acde		bhikl		f w		j		s t		v y		x		z	
	C	D	C	D	C	D	C	D	C	D	C	D	C	D	C	D
A W X	1 ²	1 ⁴	1 ⁴	1 ⁵	1 ²	1 ⁴	0 ⁶	1 ⁰	1 ¹	1 ⁴	0 ⁶	1 ⁰	1 ¹	1 ²	1 ²	1 ⁴
B	1 ⁴	1 ⁵	2 ⁰	2 ¹	1 ⁴	1 ⁵	1 ¹	1 ²	1 ⁴	1 ⁵	1 ²	1 ⁴	1 ²	1 ⁴	1 ⁶	1 ⁷
C E G	1 ⁴	1 ⁵	2 ⁰	2 ¹	1 ²	1 ⁴	0 ⁶	1 ⁰	1 ²	1 ⁴	1 ²	1 ⁴	1 ⁴	1 ⁵	1 ⁴	1 ⁵
D O Q R	1 ⁴	1 ⁵	2 ⁰	2 ¹	1 ⁴	1 ⁵	0 ⁶	1 ⁰	1 ²	1 ⁴	1 ²	1 ⁴	1 ⁴	1 ⁵	1 ⁴	1 ⁵
F	0 ⁵	0 ⁶	1 ⁴	1 ⁵	0 ⁶	1 ⁰	0 ⁵	0 ⁶	0 ⁶	1 ⁰	0 ⁶	1 ⁰	0 ⁶	1 ⁰	1 ¹	1 ²
H I M N	2 ⁰	2 ¹	2 ²	2 ⁴	2 ⁰	2 ¹	1 ⁴	1 ⁵	1 ⁶	1 ⁷	1 ⁶	1 ⁷	1 ⁶	1 ⁷	2 ⁰	2 ¹
J U	2 ⁰	2 ¹	2 ⁰	2 ¹	1 ⁶	1 ⁷	1 ⁴	1 ⁵	1 ⁶	1 ⁷	1 ⁶	1 ⁷	1 ⁶	1 ⁷	2 ⁰	2 ¹
K L	1 ¹	1 ²	1 ⁶	1 ⁷	1 ¹	1 ²	0 ⁵	0 ⁶	1 ¹	1 ²	1 ¹	1 ²	1 ¹	1 ²	1 ²	1 ⁴
P	1 ²	1 ⁴	1 ⁴	1 ⁵	1 ²	1 ⁴	0 ⁵	0 ⁶	1 ¹	1 ²	1 ¹	1 ²	1 ¹	1 ²	1 ⁴	1 ⁴
S	1 ²	1 ⁴	1 ⁶	1 ⁷	1 ²	1 ⁴	0 ⁶	1 ⁰	1 ²	1 ⁴	1 ²	1 ⁴	1 ²	1 ⁴	1 ²	1 ⁴
T	1 ¹	1 ²	1 ⁶	1 ⁷	0 ⁶	1 ⁰	0 ⁶	1 ⁰	1 ¹	1 ²	1 ¹	1 ²	1 ¹	1 ²	1 ²	1 ⁴
V	0 ⁶	1 ⁰	1 ⁴	1 ⁵	1 ¹	1 ²	0 ⁶	1 ⁰	1 ²	1 ⁴	1 ²	1 ⁴	1 ²	1 ⁴	1 ²	1 ⁴
Y	0 ⁵	0 ⁶	1 ⁴	1 ⁵	0 ⁶	1 ⁰	0 ⁵	0 ⁶	0 ⁵	0 ⁷	0 ⁵	0 ⁶	0 ⁶	1 ⁰	1 ¹	1 ²
Z	1 ⁶	1 ⁷	2 ²	2 ⁴	1 ⁶	1 ⁷	1 ²	1 ⁴	1 ⁶	1 ⁷	1 ⁶	1 ⁷	1 ⁶	1 ⁷	2 ⁰	2 ¹

Lower Case To Lower Case Spacing Chart 6 Inch Series "C & D"

SERIES	SECOND LETTER															
	acde		bhikl		f w		j		s t		v y		x		z	
	C	D	C	D	C	D	C	D	C	D	C	D	C	D	C	D
ad h g i j	1 ⁶	1 ⁷	2 ²	2 ⁴	1 ⁶	1 ⁷	1 ²	1 ⁴	1 ⁴	1 ⁵	1 ⁴	1 ⁵	1 ⁶	1 ⁷	1 ⁶	1 ⁷
l m n q u																
b f k o p s	1 ²	1 ⁴	1 ⁶	1 ⁷	1 ¹	1 ²	0 ⁵	0 ⁶	1 ¹	1 ²	1 ¹	1 ²	1 ¹	1 ²	1 ⁴	1 ⁴
c e	1 ²	1 ⁴	1 ⁶	1 ⁷	1 ²	1 ⁴	0 ⁶	1 ⁰	1 ²	1 ⁴	1 ²	1 ⁴	1 ²	1 ⁴	1 ²	1 ⁴
r	0 ⁶	1 ⁰	1 ²	1 ⁴	0 ⁶	1 ⁰	0 ³	0 ³	0 ⁵	0 ⁶	0 ⁵	0 ⁶	0 ⁶	1 ⁰	0 ⁶	1 ⁰
t z	1 ²	1 ⁴	1 ⁶	1 ⁷	1 ²	1 ⁴	0 ⁶	1 ⁰	1 ¹	1 ²	1 ¹	1 ²	1 ¹	1 ²	1 ⁴	1 ⁴
v y	1 ¹	1 ²	1 ⁴	1 ⁵	1 ¹	1 ²	0 ⁵	0 ⁶	0 ⁶	1 ⁰	0 ⁶	1 ⁰	1 ¹	1 ²	1 ¹	1 ²
w	1 ¹	1 ²	1 ⁴	1 ⁵	1 ¹	1 ²	0 ⁵	0 ⁶	1 ¹	1 ²	1 ¹	1 ²	1 ¹	1 ²	1 ²	1 ⁴
x	1 ²	1 ⁴	1 ⁶	1 ⁷	1 ¹	1 ²	0 ⁵	0 ⁶	1 ¹	1 ²	1 ¹	1 ²	1 ¹	1 ²	1 ²	1 ⁴

Number To Number Spacing Chart 8 Inch Series "C & D"

SERIES	SECOND NUMBER																			
	0		1		2		3		4		5		6		7		8		9	
	C	D	C	D	C	D	C	D	C	D	C	D	C	D	C	D	C	D	C	D
0 9	1 ⁶	1 ⁷	1 ⁶	1 ⁷	1 ⁴	1 ⁵	1 ²	1 ⁴	1 ⁴	1 ⁵	1 ⁴	1 ⁵	1 ⁶	1 ⁷	1 ²	1 ⁴	1 ⁶	1 ⁷	1 ⁶	1 ⁷
1	2 ⁰	2 ¹	2 ⁰	2 ¹	2 ⁰	2 ¹	1 ⁶	1 ⁷	1 ⁴	1 ⁵	2 ⁰	2 ¹	2 ⁰	2 ¹	1 ⁴	1 ⁵	2 ⁰	2 ¹	2 ⁰	2 ¹
2 3 4	1 ⁴	1 ⁵	1 ⁴	1 ⁵	1 ⁴	1 ⁵	1 ²	1 ⁴	1 ⁴	1 ⁵	1 ⁴	1 ⁵	1 ¹	1 ²	1 ⁴	1 ⁵	1 ⁴	1 ⁵	1 ⁴	1 ⁵
5	1 ⁴	1 ⁵	1 ⁴	1 ⁵	1 ⁴	1 ⁵	1 ¹	1 ²	1 ¹	1 ²	1 ⁴	1 ⁵	1 ⁴	1 ⁵	1 ¹	1 ²	1 ⁴	1 ⁵	1 ⁴	1 ⁵
6	1 ⁶	1 ⁷	1 ⁴	1 ⁵	1 ⁴	1 ⁵	1 ²	1 ⁴	1 ⁴	1 ⁵	1 ⁴	1 ⁵	1 ¹	1 ²	1 ⁴	1 ⁵	1 ⁴	1 ⁵	1 ⁴	1 ⁵
7	1 ²	1 ⁴	1 ²	1 ⁴	1 ⁴	1 ⁵	1 ²	1 ⁵	0 ⁵	0 ⁶	1 ²	1 ⁴	1 ⁴	1 ⁵	1 ¹	1 ²	1 ⁴	1 ⁵	1 ²	1 ⁴
8	1 ⁶	1 ⁷	1 ⁶	1 ⁷	1 ⁴	1 ⁵	1 ²	1 ⁴	1 ⁴	1 ⁵	1 ⁶	1 ⁷	1 ²	1 ⁴	1 ⁶	1 ⁷	1 ²	1 ⁴	1 ⁶	1 ⁷

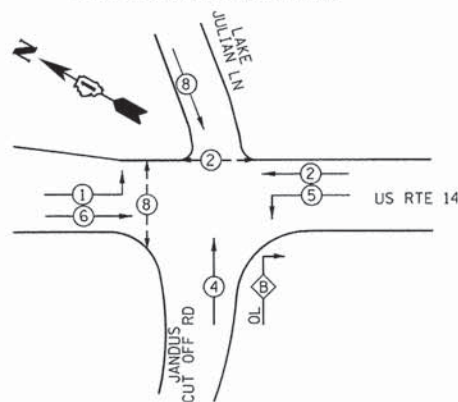
EXAMPLE, 2³ DENOTES 3/8

UPPER AND LOWER CASE LETTER WIDTHS

LETTERS	6 INCH UPPER CASE LETTERS		8 INCH UPPER CASE LETTERS		LETTERS	6 INCH LOWER CASE LETTERS	
	SERIES		SERIES			SERIES	
	C	D	C	D		C	D
A	3 ⁶	5 ⁰	5 ⁰	6 ⁵	a	3 ⁵	4 ²
B	3 ²	4 ⁰	4 ³	5 ³	b	3 ⁵	4 ²
C	3 ²	4 ⁰	4 ³	5 ³	c	3 ⁵	4 ¹
D	3 ²	4 ⁰	4 ³	5 ³	d	3 ⁵	4 ²
E	3 ⁰	3 ⁵	4 ⁰	4 ⁷	e	3 ⁵	4 ²
F	3 ⁰	3 ⁵	4 ⁰	4 ⁷	f	2 ³	2 ⁶
G	3 ²	4 ⁰	4 ³	5 ³	g	3 ⁵	4 ²
H	3 ²	4 ⁰	4 ³	5 ³	h	3 ⁵	4 ²
I	0 ⁷	0 ⁷	1 ¹	1 ²	i	1 ¹	1 ¹
J	3 ⁰	3 ⁶	4 ⁰	5 ⁰	j	2 ⁰	2 ²
K	3 ²	4 ¹	4 ³	5 ⁴	k	3 ⁵	4 ²
L	3 ⁰	3 ⁵	4 ⁰	4 ⁷	l	1 ¹	1 ¹
M	3 ⁷	4 ⁵	5 ¹	6 ¹	m	6 ⁰	7 ⁰
N	3 ²	4 ⁰	4 ³	5 ³	n	3 ⁵	4 ²
O	3 ⁴	4 ²	4 ⁵	5 ⁵	o	3 ⁶	4 ³
P	3 ²	4 ⁰	4 ³	5 ³	p	3 ⁵	4 ²
Q	3 ⁴	4 ²	4 ⁵	5 ⁵	q	3 ⁵	4 ²
R	3 ²	4 ⁰	4 ³	5 ³	r	2 ⁶	3 ²
S	3 ²	4 ⁰	4 ³	5 ³	s	3 ⁶	4 ²
T	3 ⁰	3 ⁵	4 ⁰	4 ⁷	t	2 ⁷	3 ²
U	3 ²	4 ⁰	4 ³	5 ³	u	3 ⁵	4 ²
V	3 ⁵	4 ⁴	4 ⁷	6 ⁰	v	4 ²	4 ⁷
W	4 ⁴	5 ²	6 ⁰	7 ⁰	w	5 ⁵	6 ⁴
X	3 ⁴	4 ⁰	4 ⁵	5 ³	x	4 ⁴	5 ¹
Y	3 ⁶	5 ⁰	5 ⁰	6 ⁶	y	4 ⁶	5 ³
Z	3 ²	4 ⁰	4 ³	5 ³	z	3 ⁶	4 ³

NUMBER	6 INCH SERIES		8 INCH SERIES	
	C	D	C	D
1	1 ²	1 ⁴	1 ⁵	2 ⁰
2	3 ²	4 ⁰	4 ³	5 ³
3	3 ²	4 ⁰	4 ³	5 ³
4	3 ⁵	4 ³	4 ⁷	5 ⁷
5	3 ²	4 ⁰	4 ³	5 ³
6	3 ²	4 ⁰	4 ³	

CONTROLLER SEQUENCE



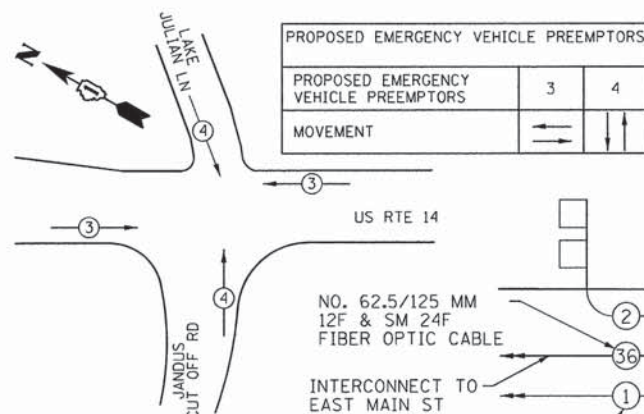
CONTROLLER SEQUENCE LEGEND

- ⊕ DUAL ENTRY PHASE
- ⊕ OVERLAP
- ⊕ PEDESTRIAN PHASE
- NUMBER REFERRING TO ASSOCIATED PHASE

PHASE DESIGNATION DIAGRAM

OVERLAP PHASE	PERMISSIVE PHASE	PROTECTED PHASE
B	= 4	+ 5

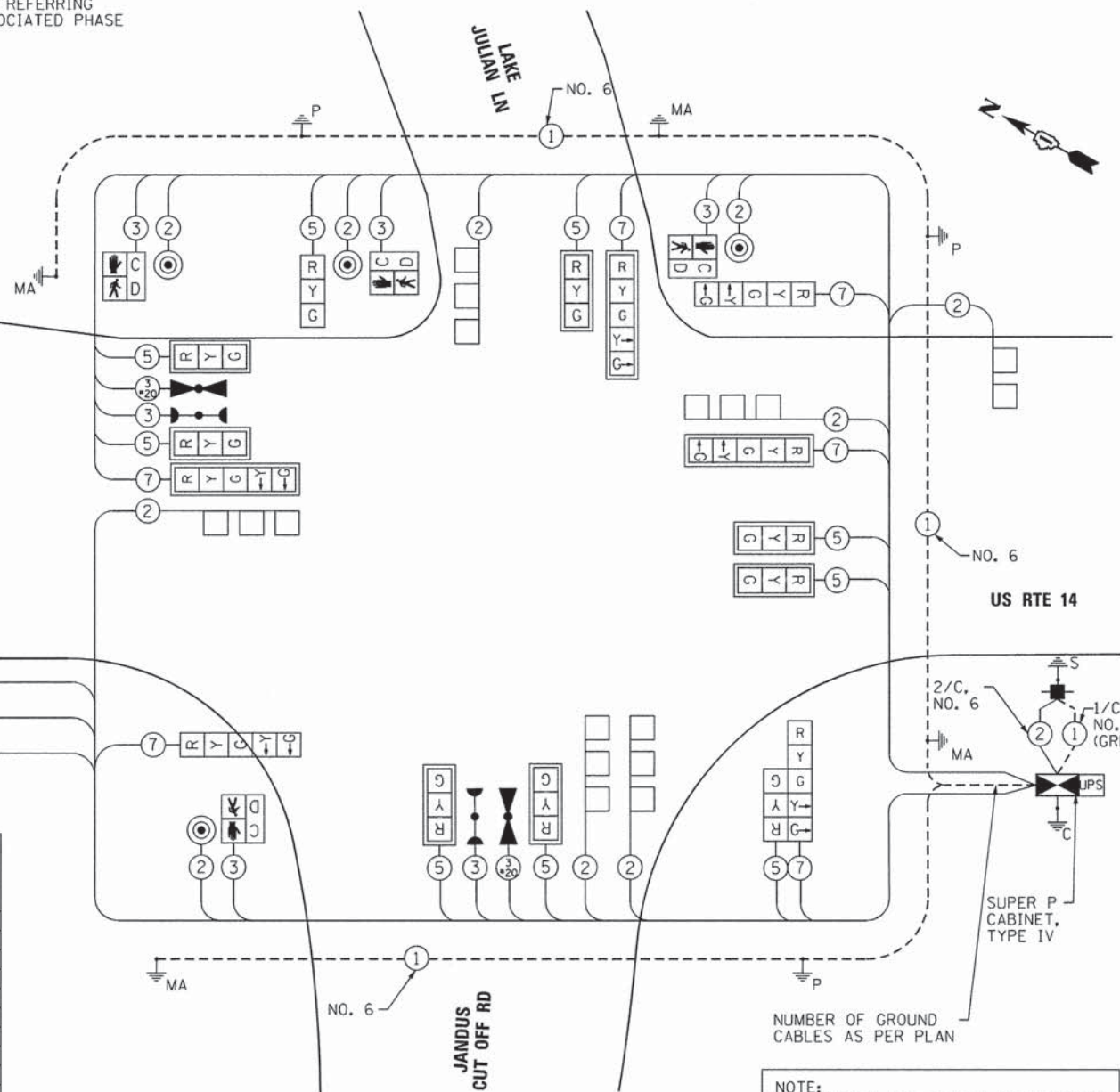
EMERGENCY VEHICLE PREEMPTION SEQUENCE



I.D.O.T TRAFFIC SIGNAL INSTALLATION ELECTRICAL SERVICE REQUIREMENTS					
TYPE	NO. LAMPS	WATTAGE		% OPERATION	TOTAL WATTAGE
		INCAND.	LED		
SIGNAL (RED)	15	17	0.50	127.5	
(YELLOW)	15	25	0.25	93.75	
(GREEN)	15	15	0.25	56.25	
ARROW (YELLOW)	6	12	0.10	7.2	
ARROW (GREEN)	6	12	0.10	7.2	
PEDESTRIAN SIGNAL	4	25	1.00	100	
CONTROLLER	1	100	1.00	100	
UPS	1	25	1.00	25	
TOTAL =				516.90	

ENERGY COSTS TO: VILLAGE OF CARY
655 VILLAGE HALL DRIVE
CARY, IL 60013

ENERGY SUPPLY CONTACT: NORA FERNANDEZ
PHONE: (866) 639-3532
COMPANY: COMMONWEALTH EDISON



CABLE PLAN

NOTE: THE END OF THE TRACER CABLE SHALL BE CONTINUOUS AND EXTEND INTO THE CONTROLLER CABINET.

NOTE: THE TRAFFIC SIGNAL CONTROL EQUIPMENT FOR THIS PROJECT SHALL BE "ECONOLITE" TO MATCH THE EXISTING ADJACENT SYSTEM.

SCHEDULE OF QUANTITIES

ITEM	UNIT	TOTAL
SIGN PANEL - TYPE 1	SO FT	15.0
SIGN PANEL - TYPE 2	SO FT	54.0
SERVICE INSTALLATION - POLE MOUNTED	EACH	1
UNDERGROUND CONDUIT, GALVANIZED STEEL, 2" DIA.	FOOT	730.0
UNDERGROUND CONDUIT, GALVANIZED STEEL, 2 1/2" DIA.	FOOT	47.0
UNDERGROUND CONDUIT, GALVANIZED STEEL, 3" DIA.	FOOT	85.0
UNDERGROUND CONDUIT, GALVANIZED STEEL, 4" DIA.	FOOT	397.0
HANDHOLE	EACH	2
HEAVY-DUTY HANDHOLE	EACH	4
DOUBLE HANDHOLE	EACH	2
PAINT NEW TRAFFIC SIGNAL POST	EACH	3
PAINT NEW MAST ARM AND POLE, UNDER 40 FOOT	EACH	1
PAINT NEW MAST ARM AND POLE, 40 FOOT AND OVER	EACH	3
ELECTRIC CABLE IN CONDUIT, SIGNAL NO. 14 2C	FOOT	770.5
ELECTRIC CABLE IN CONDUIT, SIGNAL NO. 14 3C	FOOT	1,387.0
ELECTRIC CABLE IN CONDUIT, SIGNAL NO. 14 5C	FOOT	2,025.5
ELECTRIC CABLE IN CONDUIT, SIGNAL NO. 14 7C	FOOT	884.5
ELECTRIC CABLE IN CONDUIT, SERVICE, NO. 6 2 C	FOOT	70.5
ELECTRIC CABLE IN CONDUIT, EQUIPMENT GROUNDING CONDUCTOR, NO. 6 1C	FOOT	981.5
TRAFFIC SIGNAL POST, GALVANIZED STEEL 14 FT.	EACH	1
TRAFFIC SIGNAL POST, GALVANIZED STEEL 16 FT.	EACH	2
STEEL MAST ARM ASSEMBLY AND POLE, 24 FT.	EACH	1
STEEL MAST ARM ASSEMBLY AND POLE, 40 FT.	EACH	1
STEEL MAST ARM ASSEMBLY AND POLE, 42 FT.	EACH	1
STEEL MAST ARM ASSEMBLY AND POLE, 60 FT.	EACH	1
CONCRETE FOUNDATION, TYPE A	FOOT	12.0
CONCRETE FOUNDATION, TYPE C	FOOT	4.0
CONCRETE FOUNDATION, TYPE E 30-INCH DIAMETER	FOOT	10.0
CONCRETE FOUNDATION, TYPE E 36-INCH DIAMETER	FOOT	26.0
CONCRETE FOUNDATION, TYPE E 42-INCH DIAMETER	FOOT	21.0
SIGNAL HEAD, LED, 1-FACE, 3-SECTION, MAST-ARM MOUNTED	EACH	7
SIGNAL HEAD, LED, 1-FACE, 3-SECTION, BRACKET MOUNTED	EACH	1
SIGNAL HEAD, LED, 1-FACE, 5-SECTION, BRACKET MOUNTED	EACH	2
SIGNAL HEAD, LED, 1-FACE, 5-SECTION, MAST-ARM MOUNTED	EACH	3
SIGNAL HEAD, LED, 2-FACE, 1-3 SECTION, 1-5 SECTION, BRACKET MOUNTED	EACH	1
PEDESTRIAN SIGNAL HEAD, LED, 1-FACE, BRACKET MOUNTED WITH COUNTDOWN TIMER	EACH	4
TRAFFIC SIGNAL BACKPLATE, LOUVERED	EACH	10
INDUCTIVE LOOP DETECTOR	EACH	7
DETECTOR LOOP, TYPE I	FOOT	633.0
* LIGHT DETECTOR	EACH	2
* LIGHT DETECTOR AMPLIFIER	EACH	1
PEDESTRIAN PUSH-BUTTON	EACH	4
TEMPORARY TRAFFIC SIGNAL INSTALLATION	EACH	1
REMOVE EXISTING TRAFFIC SIGNAL EQUIPMENT	EACH	1
REMOVE EXISTING HANDHOLE	EACH	7
REMOVE EXISTING DOUBLE HANDHOLE	EACH	1
REMOVE EXISTING CONCRETE FOUNDATION	EACH	8
TEMPORARY TRAFFIC SIGNAL TIMING	EACH	1
* EMERGENCY VEHICLE PRIORITY SYSTEM LINE SENSOR CABLE, NO. 20 3/C	FOOT	588.5
FULL-ACTUATED CONTROLLER AND TYPE IV CABINET, SPECIAL	EACH	1
UNINTERRUPTIBLE POWER SUPPLY, SPECIAL	EACH	1
TRANSCIVER - FIBER OPTIC	EACH	1
DRILL EXISTING HANDHOLE	EACH	1
ELECTRIC CABLE IN CONDUIT, LEAD-IN, NO. 14 1 PAIR	FOOT	1,420.5

* 100% OF EMERGENCY VEHICLE PREEMPTION EQUIPMENT COST SHALL BE PAID FOR BY THE VILLAGE OF CARY.

COMPANY NAME: HRGreen.com
PROJECT CONTACT: HRGreen.com
CLIENT: VILLAGE OF CARY
DATE PLOTTED: 2/11/2014 12:01:54 PM
FILE NAME: 8612023-49-cob.dgn
PLOT DRIVER: PLOTDRIVER
PEN TABLE: Standard.ctb

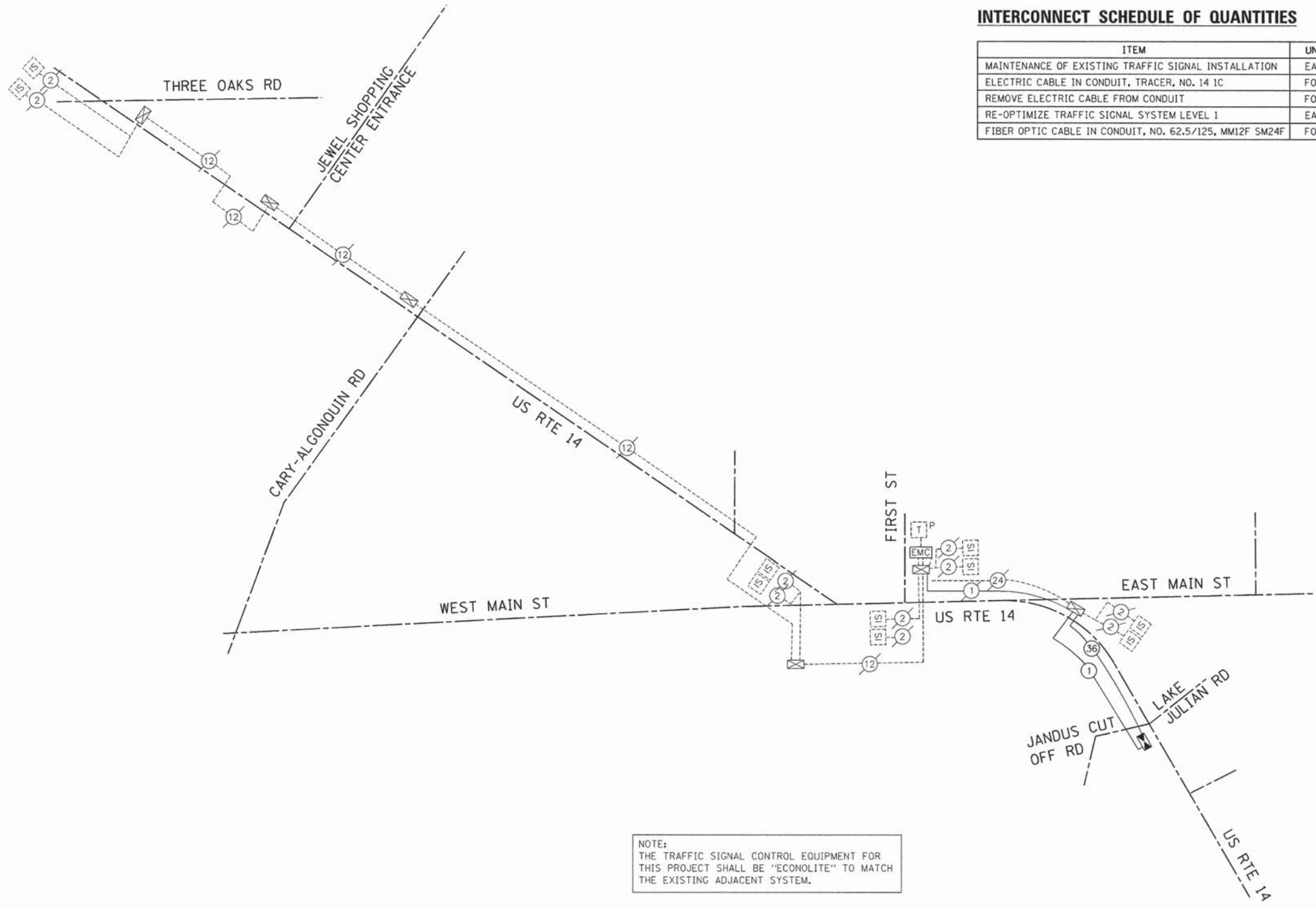


USER NAME: jst-201	DESIGNED: JJS	REVISED: 2/11/2014
DESIGNED: DMS	CHECKED: TEH	DATE: 2/11/2014

STATE OF ILLINOIS
DEPARTMENT OF TRANSPORTATION

CABLE PLAN, PHASE DESIGNATION DIAGRAM, EMERGENCY VEHICLE PREEMPTION SEQUENCE AND SCHEDULE OF QUANTITIES
US RTE 14 AT JANDUS CUT OFF ROAD/LAKE JULIAN LANE

F.A.U. RTE.	SECTION	COUNTY	TOTAL SHEETS	SHEET NO.
4058	13-00063-00-PV	MCHENRY	79	46
FED. ROAD DIST. NO. [ILLINOIS] FED. AID PROJECT			CONTRACT NO. 63886	



INTERCONNECT SCHEDULE OF QUANTITIES

ITEM	UNIT	TOTAL
MAINTENANCE OF EXISTING TRAFFIC SIGNAL INSTALLATION	EACH	1
ELECTRIC CABLE IN CONDUIT, TRACER, NO. 14 1C	FOOT	874.5
REMOVE ELECTRIC CABLE FROM CONDUIT	FOOT	890.0
RE-OPTIMIZE TRAFFIC SIGNAL SYSTEM LEVEL 1	EACH	1
FIBER OPTIC CABLE IN CONDUIT, NO. 62.5/125, MM12F SM24F	FOOT	900.5

NOTE:
 THE TRAFFIC SIGNAL CONTROL EQUIPMENT FOR THIS PROJECT SHALL BE "ECONOLITE" TO MATCH THE EXISTING ADJACENT SYSTEM.

8612023
 2/11/2014 1:29:38 PM
 8612023-16-hrtech.dgn
 JPT
 JPT
 JPT



USER NAME = jptzai	DESIGNED - JJS	REVISED - 2/11/2014
	DRAWN - DMS	REVISED -
PLOT SCALE = N.T.S.	CHECKED - TEH	REVISED -
PLOT DATE = 2/11/2014	DATE -	REVISED -

STATE OF ILLINOIS
DEPARTMENT OF TRANSPORTATION

INTERCONNECT SCHEMATIC
US ROUTE 14
FROM THREE OAKS ROAD TO JANDUS CUT OFF ROAD/LAKE JULIAN LANE
 SCALE: N.T.S. SHEET NO. 22 OF 22 SHEETS STA. TO STA.

F.A. U. RTE.	SECTION	COUNTY	TOTAL SHEETS	SHEET NO.
4058	13-00063-00-PV	MCHENRY	79	48
FED. ROAD DIST. NO. ILLINOIS FED. AID PROJECT			CONTRACT NO. 63886	