

MAINTENANCE OF TRAFFIC NOTES

- EMERGENCY VEHICLE ACCESS SHALL BE MAINTAINED AT ALL TIMES. ANY SIGNIFICANT CHANGE IN TRAFFIC CONTROL SHALL HAVE PRIOR APPROVAL BY THE ENGINEER. THE CONTRACTOR SHALL PROVIDE A MINIMUM OF THREE (3) DAYS NOTICE IN ADVANCE OF CONSTRUCTION ACTIVITIES WHICH IMPACT EMERGENCY SERVICES.
- DAYTIME LANE CLOSURES ON WEST LAKE AVENUE (AND GREENWOOD ROAD) SHALL ONLY BE ALLOWED BETWEEN THE HOURS OF 9AM AND 3PM AND MUST LEAVE AT LEAST ONE 10' MIN. WIDTH LANE OPEN IN EACH DIRECTION AT ALL TIMES. AT LEAST TWO 10' MIN. WIDTH LANES SHALL REMAIN OPEN TO TRAFFIC IN EACH DIRECTION ALL OTHER TIMES.
- ALL LANES SHALL BE OPEN TO TRAFFIC AT THE END OF EACH DAY, MAINTAINING A MINIMUM 10' WIDTH PER LANE.
- THE CONTRACTOR SHALL PROVIDE TEMPORARY ACCESS TO DRIVEWAYS AND SIDE ROADS DURING CONSTRUCTION, UTILIZING PAY ITEMS TEMPORARY ACCESS (ROAD) AND TEMPORARY ACCESS (COMMERCIAL ENTRANCE).
- ALL COMMERCIAL PROPERTIES SHALL BE PROVIDED AT LEAST ONE INGRESS AND ONE EGRESS EITHER ON THE MAINLINE OR A SIDE STREET AT ALL TIMES. THE CONTRACTOR SHALL COORDINATE DRIVEWAY CLOSURES/MODIFICATIONS WITH THE LOCAL BUSINESSES AND THE ENGINEER. COMMERCIAL DRIVEWAYS WHICH CANNOT BE CLOSED, AS DETERMINED BY THE ENGINEER, SHALL BE CONSTRUCTED IN STAGES OR WILL BE CONSTRUCTED WHEN BUSINESSES ARE NOT OPEN USING HIGH EARLY STRENGTH CONCRETE.
- ALL DRUMS AND VERTICAL PANELS SHALL BE EQUIPPED WITH STEADY BURN MONO-DIRECTIONAL LIGHTS. SPACING SHALL BE AT 50 FOOT INTERVALS ALONG WORK AREAS AND 25 FEET WHERE DIRECTION CHANGES AND TAPERS OCCUR, OR AS DIRECTED BY THE ENGINEER.
- DAILY LANE CLOSURES SHALL BE IN ACCORDANCE WITH THE APPLICABLE HIGHWAY STANDARDS.
- CONSTRUCTION VEHICLES AND/OR EQUIPMENT SHALL NOT BE PARKED OVERNIGHT WITHIN IDOT OR VILLAGE RIGHT-OF-WAY ADJACENT TO OR IN FRONT OF COMMERCIAL BUSINESS PROPERTIES. THE ENGINEER WILL ASSIST THE CONTRACTOR IN IDENTIFYING CONSTRUCTION STAGING LOCATIONS AT THE START OF CONSTRUCTION.

SUGGESTED SEQUENCE OF CONSTRUCTION - WEST LAKE AVENUE
PRIOR TO STAGE 1

- ESTABLISH TRAFFIC CONTROL AND EROSION CONTROL MEASURES
- ESTABLISH TRAFFIC CONTROL DETOUR ROUTE
- COMPLETE TREE REMOVALS/PRUNING

STAGE 1A

- DURING ALLOWABLE DAYTIME HOURS, CLOSE ONE THRU LANE IN ACCORDANCE WITH HIGHWAY STANDARDS, MAINTAINING TWO WAY TRAFFIC WITH FLAGGERS.
- REMOVE STREET LIGHTS TO BE RELOCATED AND CURB AND GUTTER AS DETERMINED BY THE ENGINEER. INSTALL TEMPORARY PAVEMENT AS DETERMINED BY THE ENGINEER TO MAINTAIN TRAFFIC AROUND THE CONSTRUCTION WORK ZONE.
- INSTALL REQUIRED UNDERGROUND UTILITIES, INCLUDING STORM SEWER AND WATER MAIN WORK AND PAVEMENT PATCHING.

STAGE 1B

- MAINTAIN ONE THRU LANE OF TRAFFIC IN EACH DIRECTION.
- AS APPROVED BY THE ENGINEER, CLOSE ONE THRU LANE IN ACCORDANCE WITH HIGHWAY STANDARDS, MAINTAINING TWO WAY TRAFFIC WITH FLAGGERS
- INSTALL REQUIRED UNDERGROUND UTILITIES, INCLUDING STORM SEWER AND WATER MAIN WORK AND PAVEMENT PATCHING.

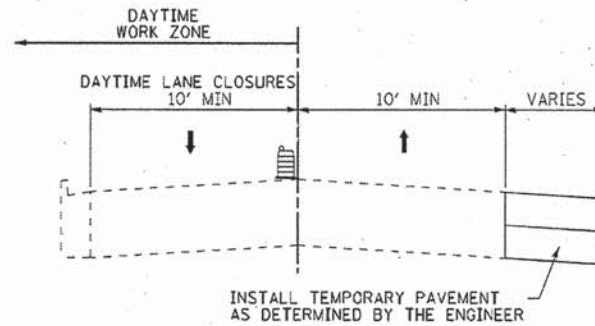
STAGE 2

- DURING ALLOWABLE DAYTIME HOURS, CLOSE ONE THRU LANE IN ACCORDANCE WITH HIGHWAY STANDARDS, MAINTAINING TWO WAY TRAFFIC WITH FLAGGERS.
- SAW CUT PAVEMENT REMOVAL LIMITS
- COMPLETE PAVEMENT REMOVAL AND EXCAVATION OPERATIONS FOR WIDENING AND RECONSTRUCTION AND INSTALL AGGREGATE SUBBASE, PROVIDING TEMPORARY ACCESS TO DRIVEWAYS BY THE END OF EACH DAY.

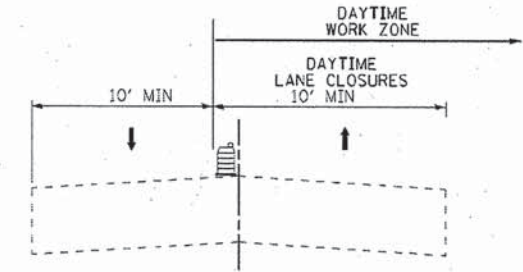
PAVEMENT REMOVAL SHALL BE LIMITED EACH DAY SO THAT AGGREGATE BASE COURSE SHALL BE INSTALLED ON THE SAME WORKING DAY AS THE LIMITS OF PAVEMENT REMOVED. TWO THRU LANES FOR TWO WAY TRAFFIC AND ACCESS TO DRIVEWAYS SHALL BE PROVIDED AT THE END OF EACH WORKING DAY.
- INSTALL PROPOSED CURB AND GUTTER AND BEGIN CONSTRUCTING PROPOSED DRIVEWAYS.
- INSTALL PROPOSED HMA AND CONCRETE BASE COURSE (GAPPING DRIVEWAYS AS REQUIRED).
- INSTALL PCC BIKE TRAIL.
- BEGIN COMPLETING SIDEWALK, DRIVEWAYS, AND PARKWAY GRADING.
- SWITCH OPERATIONS TO THE OTHER SIDE AND REPEAT STEPS 1-5 AND 7.

STAGE 3

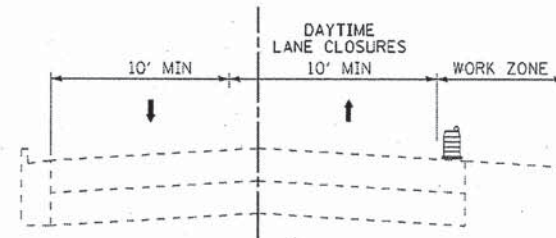
- COMPLETE PAVEMENT MILLING AND LEVELING BINDER. UTILIZE TEMPORARY PAVEMENT MARKING FOR LANE CONTROL.
- COMPLETE TOPSOIL INSTALLATION
- COMPLETE STREET LIGHT RELOCATIONS AND PERMANENT TRAFFIC SIGNAL INSTALLATION.
- COMPLETE HMA SURFACE COURSE, FINAL LANDSCAPING, PAVEMENT MARKINGS AND PUNCHLIST ITEMS.



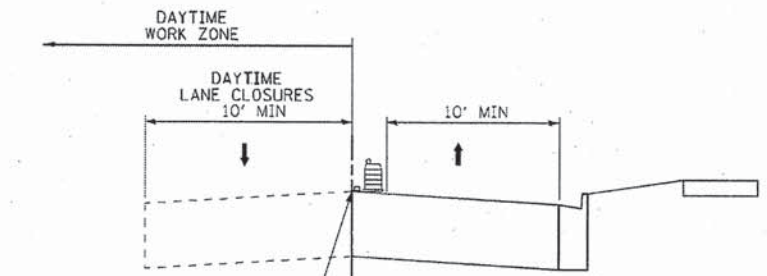
WEST LAKE AVENUE
STAGE 1A
STA 271+73 TO STA 282+19



WEST LAKE AVENUE
GREENWOOD ROAD
STAGE 2A



WEST LAKE AVENUE
STAGE 1B
STA 245+08 TO STA 271+73



WEST LAKE AVENUE
GREENWOOD ROAD
STAGE 2B

COPYRIGHT © 2013 BY BAXTER A. WOODMAN, INC.
 STATE OF ILLINOIS - PROFESSIONAL DESIGN FIRM
 LICENSE NO. 186-000171 - EXPIRES 4/30/2018
 12/29/2014
 \\pilot\cadd\120011-34-SH.MOT.dwg
 12/29/2014 10:00:00 AM
 C:\Users\woodman\OneDrive\Documents\120011-34-SH.MOT.dwg



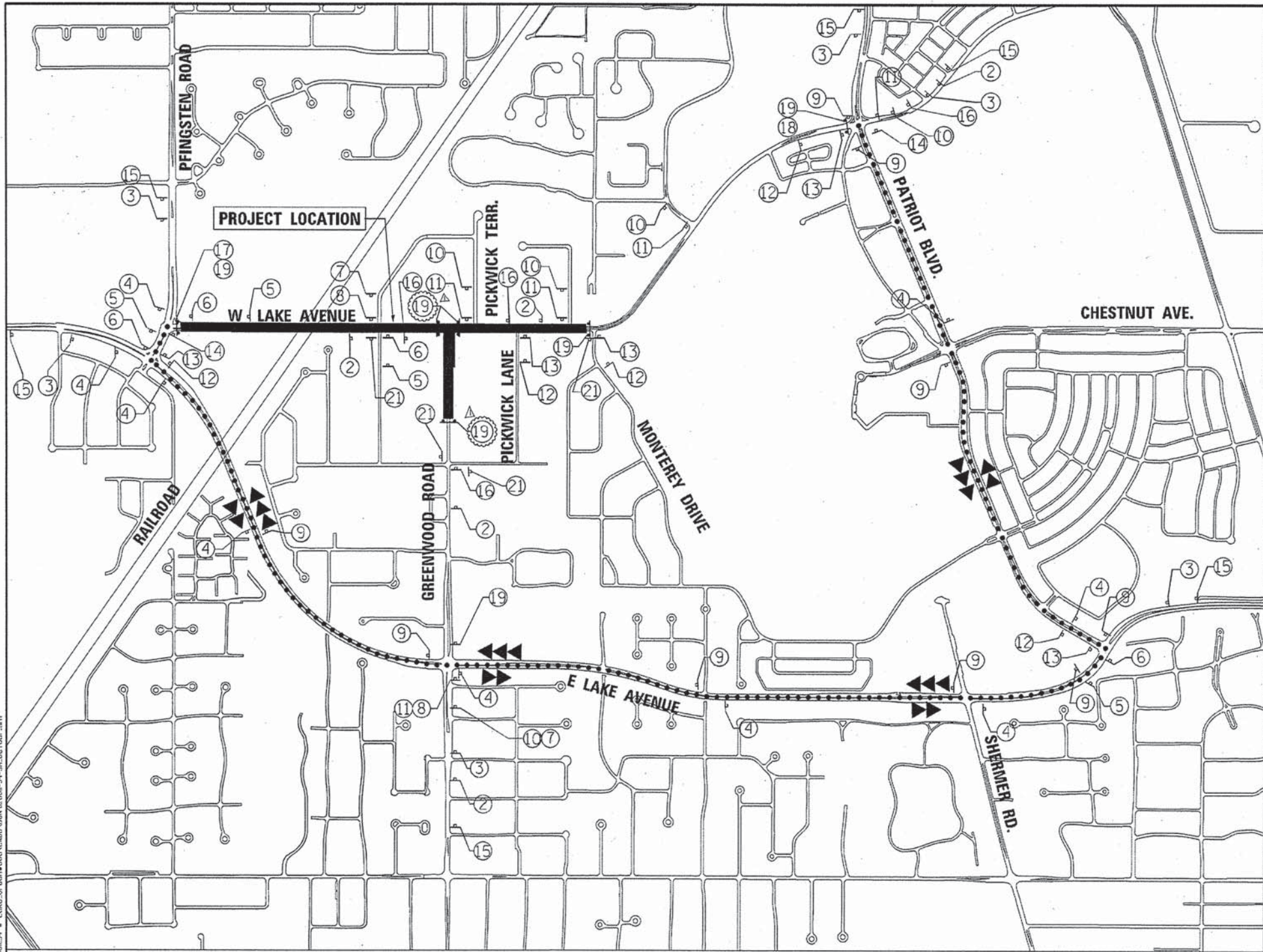
DESIGNED - CAC	REVISED - 1-30-14 ADDENDUM
DRAWN - CJC	REVISED -
CHECKED - TLH	REVISED -
DATE - 12/9/13	FILE - 120011-34-SH.MOT.dwg

STATE OF ILLINOIS
DEPARTMENT OF TRANSPORTATION

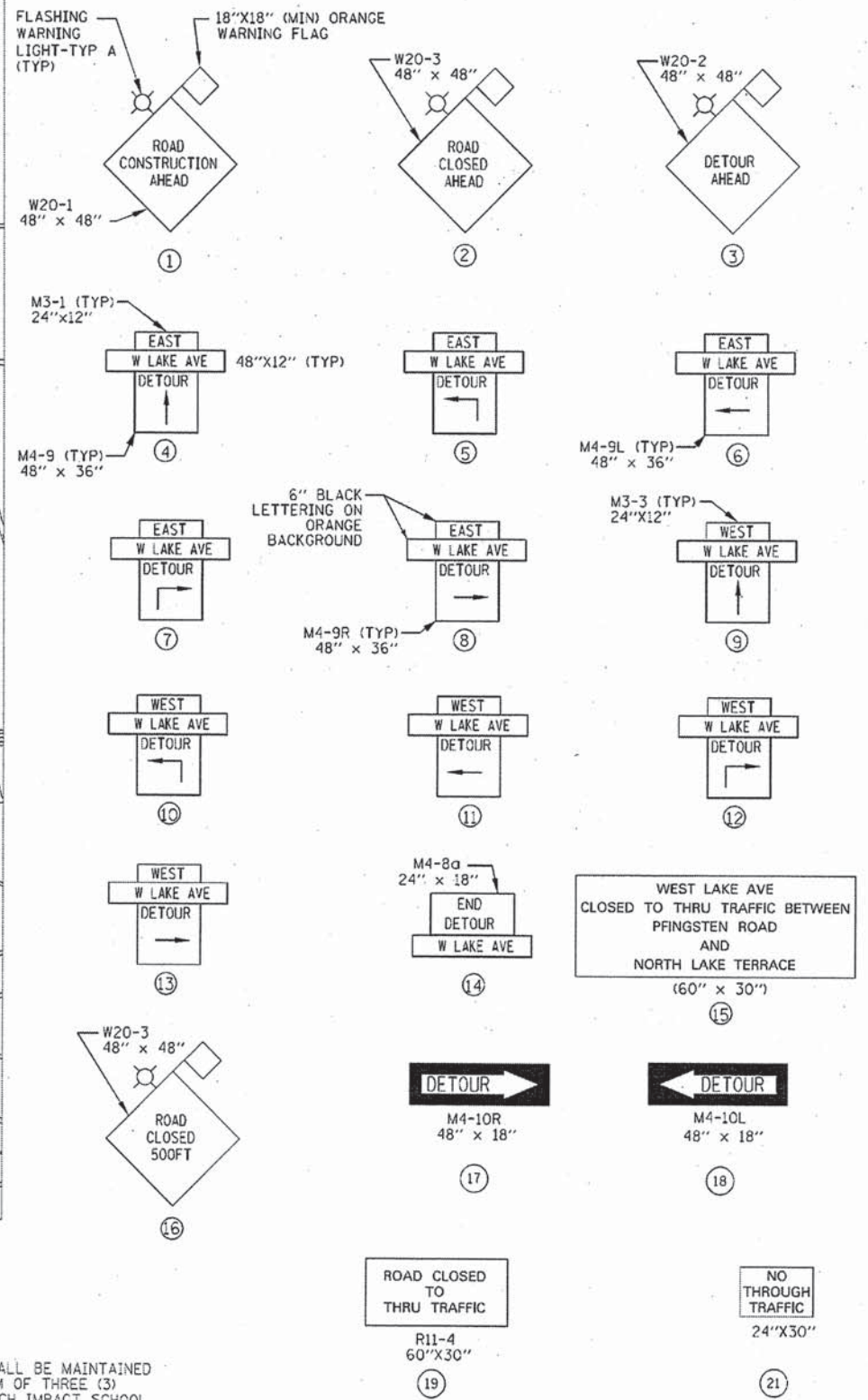
SUGGESTED MAINTENANCE OF TRAFFIC

SCALE: NONE STA. TO STA.

F.A.U. RTE.	SECTION	COUNTY	TOTAL SHEETS	SHEET NO.
1284/2743	07-00164-02-R5	COOK	87	29
C-91-028-13		CONTRACT NO. 63878		
FED. ROAD DIST. NO. 1 [ILLINOIS] FED. AID PROJECT M-400310861				



SIGN DETAILS



DETOUR ROUTE NOTES:

1. THE CONTRACTOR SHALL FURNISH, ERECT, MAINTAIN AND REMOVE ALL APPLICABLE TRAFFIC CONTROL DEVICES ALONG THE DETOUR ROUTE AS DETERMINED BY THE ENGINEER. THIS WORK WILL BE INCLUDED IN THE PAY ITEM TRAFFIC CONTROL AND PROTECTION (SPECIAL).
2. THE CONTRACTOR SHALL SUBMIT A DETOUR ROUTE SIGNAGE PLAN TO THE ENGINEER FOR APPROVAL PRIOR TO INSTALLATION OF THE DETOUR ROUTE.
3. THE CONTRACTOR SHALL OBTAIN ALL NECESSARY CONSTRUCTION PERMITS REQUIRED FOR DETOUR ROUTE INSTALLATION. THIS SHALL BE INCLUDED IN THE COST OF TRAFFIC CONTROL AND PROTECTION (SPECIAL).
4. EMERGENCY VEHICLE ACCESS AND LOCAL TRAFFIC ACCESS SHALL BE MAINTAINED AT ALL TIMES. THE CONTRACTOR SHALL PROVIDE A MINIMUM OF THREE (3) DAYS NOTICE IN ADVANCE OF CONSTRUCTION ACTIVITIES WHICH IMPACT SCHOOL BUS OR EMERGENCY SERVICES.
5. ALL LANES ON WEST LAKE AVENUE AND GREENWOOD ROAD SHALL BE OPEN TO 2 WAY TRAFFIC AT THE END OF EACH DAY, MAINTAINING A MINIMUM 10' WIDTH PER LANE.
6. THE FURNISHING, INSTALLING, AND RELOCATION OF ALL TRAFFIC SIGNS SHALL BE INCLUDED IN THE COST OF TRAFFIC CONTROL AND PROTECTION FOR TEMPORARY DETOUR. ALL CONFLICTING TRAFFIC SIGNS SHALL BE COVERED AS DIRECTED BY THE ENGINEER. THIS SHALL BE INCLUDED IN THE COST OF TRAFFIC CONTROL AND PROTECTION FOR TEMPORARY DETOUR.

LEGEND

- ▲▲▲ WESTBOUND DETOURED TRAFFIC
- ▶▶▶ EASTBOUND DETOURED TRAFFIC
- DETOUR ROUTE
- SIGN
- ▬ TYPE III BARRICADES

COPYRIGHT © 2013 BY BAXTER & WOODMAN, INC.
 STATE OF ILLINOIS - PROFESSIONAL DESIGNER FIRM
 LICENSE NO. 184-00051 - EXPIRES 4/30/2015
 1/20/2014 8:35:17 AM
 C:\Users\woodman\Documents\120011-34-SH-Detour.sht



DESIGNED - CAC	REVISED - 10-12-12 PER IDOT
DRAWN - MAC	REVISED - 10-23-13 PER IDOT
CHECKED - TLH	REVISED - 1-30-14 ADDENDUM A
DATE - 12/9/13	FILE - 120011-34-SH-Detour.sht

**STATE OF ILLINOIS
DEPARTMENT OF TRANSPORTATION**

DETOUR PLAN

SCALE: NONE

STA. TO STA.

F.A.U. RTE.	SECTION	COUNTY	TOTAL SHEETS	SHEET NO.
1284/2143	07-C0164-02-RS	COOK	87	30
C-91-028-13		CONTRACT NO. 63878		
FED. ROAD DIST. NO. 1 [ILLINOIS] FED. AID PROJECT W-40310861				