

02-28-14 LETTING ITEM 121

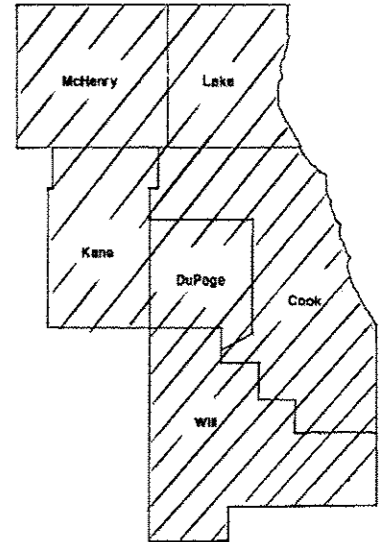
ROUTE	SECTION	COUNTY	TOTAL SHEETS	SHEET NUMBER
VARIOUS	2013-078 DTR	VARIOUS	7	1

CONTRACT 60X66
D-91-160-14

STATE OF ILLINOIS
DEPARTMENT OF TRANSPORTATION
DIVISION OF HIGHWAYS
DISTRICT ONE

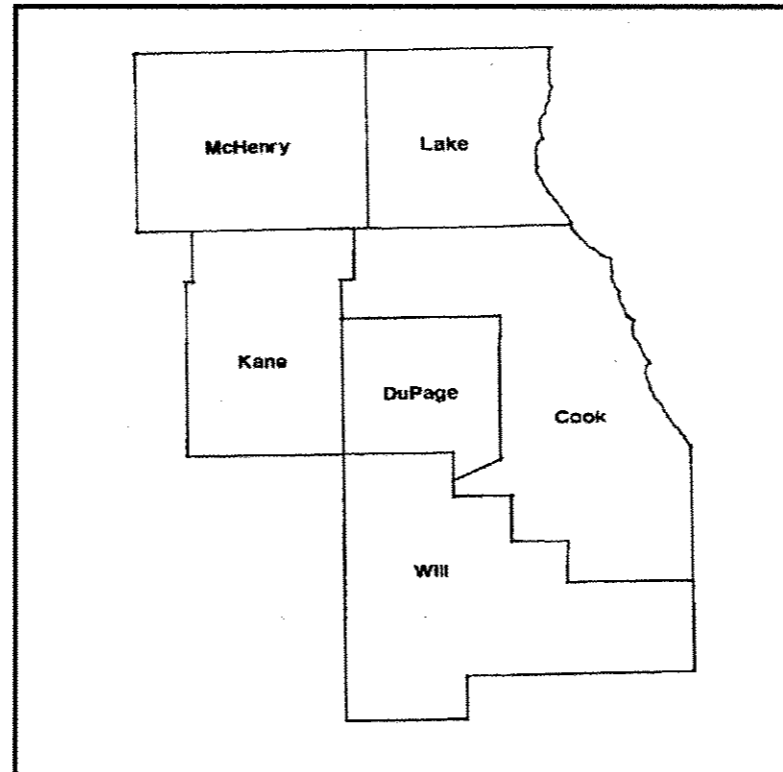
PROPOSED HIGHWAY PLANS

ROUTE: VARIOUS
SECTION 2013-078DTR
DEAD TREE REMOVAL
VARIOUS COUNTIES
C-91-160-14



LOCATION OF IMPROVEMENT INDICATED THUS: 

IMPROVEMENT IS IN VARIOUS
LOCATIONS WITHIN VARIOUS
COUNTIES



DISTRICT ONE BUREAU OF MAINTENANCE: J. STUMPNER
MAINTENANCE LANDSCAPE DESIGNER: R. WANNER / T. JACKSON (847) 705-4171

STATE OF ILLINOIS
DEPARTMENT OF TRANSPORTATION
DIVISION OF HIGHWAYS

SUBMITTED: December 24 20 13
John F. [Signature]
DEPUTY DIRECTOR OF HIGHWAYS, REGION ENGINEER

Jan 24 20 14
John D. Baranzelli, P.E.
acting ENGINEER OF DESIGN AND ENVIRONMENT

Jan 24 20 14
Omer Osman, P.E.
DIRECTOR OF HIGHWAYS, CHIEF ENGINEER

**PRINTED BY THE AUTHORITY
OF THE STATE OF ILLINOIS**

J.U.L.I.E.: JOINT UTILITY LOCATION
INFORMATION FOR EXCAVATION
(800) 892-0123 OR 811

CONTRACT 60X66

ROUTE	SECTION	COUNTY	TOTAL SHEETS	SHEET NUMBER
VARIOUS	2013-078 DTR	VARIOUS	7	2

CONTRACT 60X66

INDEX OF SHEETS

- 1) COVER SHEET
- 2) INDEX OF SHEETS, STATE STANDARDS, GENERAL NOTES
- 3) SUMMARY OF QUANTITIES
- 4) SAMPLE STANDARD WORK ORDER
- 5) SAMPLE EXPEDITED WORK ORDER
- 6) TC-10 TRAFFIC CONTROL PROTECTION FOR SIDE ROADS, INTERSECTIONS, AND DRIVEWAYS
- 7) TC-17 TRAFFIC CONTROL DETAIL FOR FREEWAY SHOULDER CLOSURES AND PARTIAL RAMP CLOSURES

STATE STANDARDS

701001-02 701006-05 701101-04 701106-02 701201-04

701301-04 701421-06 701501-06 701601-09 701901-03

GENERAL NOTES

TREE REMOVAL, ACRE includes removal of trees, shrubs, bushes, saplings, logs, other vegetation, and stumps of a diameter less than 6 inches. All trees and other stumps within the Right of way shall be removed to a depth of not less than **6 inches** below the elevation of the subgrade, the finished earth surface, or the ground line.

TREE REMOVAL 6-15 & over 15 inches will not require removal of stumps.

ILLINOIS DEPARTMENT OF TRANSPORTATION

INDEX OF SHEETS

DEAD TREE REMOVAL

ROUTE	SECTION	COUNTY	TOTAL SHEETS	SHEET NUMBER
VARIOUS	2013-078 DTR	VARIOUS	7	3

CONTRACT 60X66

SUMMARY OF QUANTITIES

PAY ITEM	DESCRIPTION	UNIT	<i>07E0V</i>	<i>07A0V</i>	<i>URBAN</i>
			CONTRACT MAINT <i>0031</i>	FORMAL CONTRACTS <i>0031</i>	TOTAL <i>100% STATE</i>
20100110	TREE REMOVAL (6 TO 15 UNITS DIAMETER)	UNIT	10,000	0	10,000
20100210	TREEREMOVAL(OVER 15 UNITS DIAMETER)	UNIT	0	11,500	11,500
20100500	TREE REMOVAL, ACRES	ACRE	6	0	6
20101300	TREE PRUNING (1 TO 10 INCH DIAMETER)	EACH	50	0	50
20101350	TREE PRUNING (OVER 10 INCH DIAMETER)	EACH	50	0	50
67100100	MOBILIZATION	L SUM	1	0	1
X0325222	WEED CONTROL, BASAL TREATMENT	GALLON	0	5	5
X2010100	TREE LIMB REMOVAL(4-10 INCHES DIAMETER)	EACH	60	0	60
X2010200	TREE LIMB REMOVAL(OVER 10 INCHES DIAMETER)	EACH	60	0	60
X2010310	TREE REMOVAL(SPECIAL)	UNIT	0	1000	1000
X2010400	STUMP REMOVAL ONLY	UNIT	0	5000	5000
Z0064800	SELECTIVE CLEARING	UNIT	0	60	60


ILLINOIS DEPARTMENT OF TRANSPORTATION

SUMMARY OF QUANTITIES

DEAD TREE REMOVAL

ROUTE	SECTION	COUNTY	TOTAL SHEETS	SHEET NUMBER
VARIOUS	2013-078 DTR	VARIOUS	7	5

CONTRACT 60X66

 Illinois Department of Transportation	Tree Removal Work Order Number:
	ID Number:

EXPEDITED REMOVAL

Date: _____ Time: _____ Contract: **60X66**

County			Work Order Prepared By	Team Section

Marked Route: _____ Municipality: _____ Side of Road: _____

Location: _____

Tree tape was used to measure the diameter of the trees.

PAY ITEM	TREE #	QUANTITY	24 HOUR	48 HOUR	TOTAL
			3X	2.5X	
LIMB REMOVAL (EACH) 4"-10"					
			3X	2.5X	
LIMB REMOVAL (EACH) >10"					
			2X	1.5X	
TREE REMOVAL (UNITS) 6"-15"					
			2X	1.5X	
TREE REMOVAL (UNITS) >15"					

Special Instructions _____

Reason for removal: _____

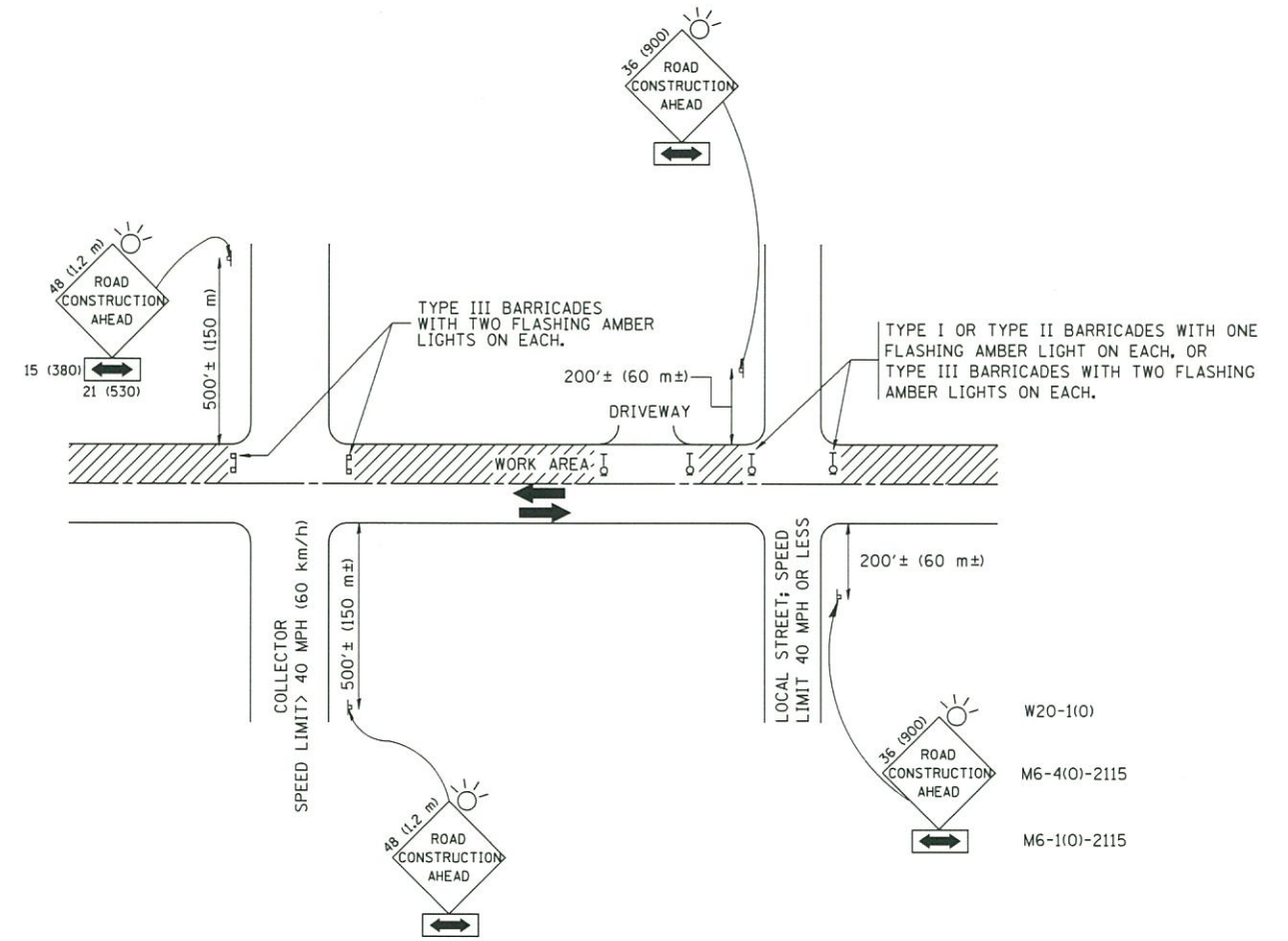
AUTHORIZATION OF WORK	
Resident Engineer/Technician Signature	
Date/Time work order issued	Contractor Initials

CERTIFICATION OF COMPLETED WORK	
Contractor Signature	
Date/Time work order completed	

OFFICE USE ONLY	
Measured in Place by:	Initials(s) _____ Date _____
Calculated by:	_____
Checked by:	_____

INSPECTION AND ACCEPTANCE OF COMPLETED WORK	
Inspector Signature	
Date work order Inspected and Accepted	
This is to certify that the work order has been completed.	

ILLINOIS DEPARTMENT OF TRANSPORTATION
 SAMPLE EXPEDITED WORK ORDER
 DEAD TREE REMOVAL



TRAFFIC CONTROL AND PROTECTION FOR SIDE ROADS, INTERSECTIONS, AND DRIVEWAYS

NOTES:

- A. FOR NO LANE RESTRICTION ON THE SIDE ROAD OR DRIVEWAYS
 - 1. SIDE ROAD WITH A SPEED LIMIT OF 40 MPH (60 km/h) OR LESS AS SHOWN ON THE DRAWING AND AS DIRECTED BY THE ENGINEER:
 - a) ONE ROAD CONSTRUCTION AHEAD SIGN 36 x 36 (900x900) WITH A FLASHER AND FLAG MOUNTED ON IT APPROXIMATELY 200' (60 m) IN ADVANCE OF THE MAIN ROUTE.
 - b) THE CLOSED PORTION OF THE MAIN ROUTE SHALL BE PROTECTED BY BLOCKING WITH TYPE I, TYPE II OR TYPE III BARRICADES, 1/3 OF THE CROSS SECTION OF THE CLOSED PORTION.
 - 2. SIDE ROAD WITH A SPEED LIMIT GREATER THAN 40 MPH (60 km/h) AS SHOWN ON THE DRAWING AND AS DIRECTED BY THE ENGINEER:
 - a) ONE ROAD CONSTRUCTION AHEAD SIGN 48 x 48 (1.2 m x 1.2 m) WITH A FLASHER MOUNTED ON IT APPROXIMATELY 500' (150 m) IN ADVANCE OF THE MAIN ROUTE.
 - b) THE CLOSED PORTION OF THE MAIN ROUTE SHALL BE PROTECTED BY BLOCKING WITH TYPE III BARRICADES, 1/2 OF THE CROSS SECTION OF THE CLOSED PORTION.
 - 3. WHEN THE SIDE ROAD LIES BETWEEN THE BEGINNING OF THE MAINLINE SIGNING AND THE WORK ZONE, A SINGLE HEADED ARROW (M6-1) SHALL BE USED IN LIEU OF THE DOUBLE HEADED ARROW (M6-4).
- B. FOR A LANE CLOSURE ON A SIDE ROAD OR DRIVEWAY:
 - USE APPLICABLE PORTIONS OF THE TYPICAL APPLICATION OF TRAFFIC CONTROL DEVICES (STD. 701501, STD. 701606 OR THE APPROPRIATE STANDARD). THE SPACING OF SIGNS AND BARRICADES SHALL BE ADJUSTED FOR FIELD CONDITIONS AS DIRECTED BY THE ENGINEER. THE DIRECTIONAL ARROW SHALL BE COVERED OR REMOVED WHEN NO LONGER CONSISTENT WITH THE SIDE ROAD LANE CLOSURE.
- C. ADVANCE WARNING SIGNS ARE TO BE OMITTED ON DRIVEWAY UNLESS OTHERWISE NOTED.
- D. THE TRAFFIC CONTROL AND PROTECTION FOR SIDE ROADS, INTERSECTIONS, AND DRIVEWAYS SHALL BE INCIDENTAL TO THE COST OF SPECIFIED TRAFFIC CONTROL STANDARDS OR ITEMS.

All dimensions are in millimeters (inches) unless otherwise shown.

FILE NAME = W:\diststd\22x34\tel0.dgn	USER NAME = gegljanobt	DESIGNED - LHA	REVISED - J. OBERLE 10-18-95
		DRAWN -	REVISED - A. HOUSEH 03-06-96
	PLOT SCALE = 50,000' / IN.	CHECKED -	REVISED - A. HOUSEH 10-15-96
	PLOT DATE = 1/4/2008	DATE - 06-89	REVISED - T. RAMMACHER 01-06-00

STATE OF ILLINOIS
DEPARTMENT OF TRANSPORTATION

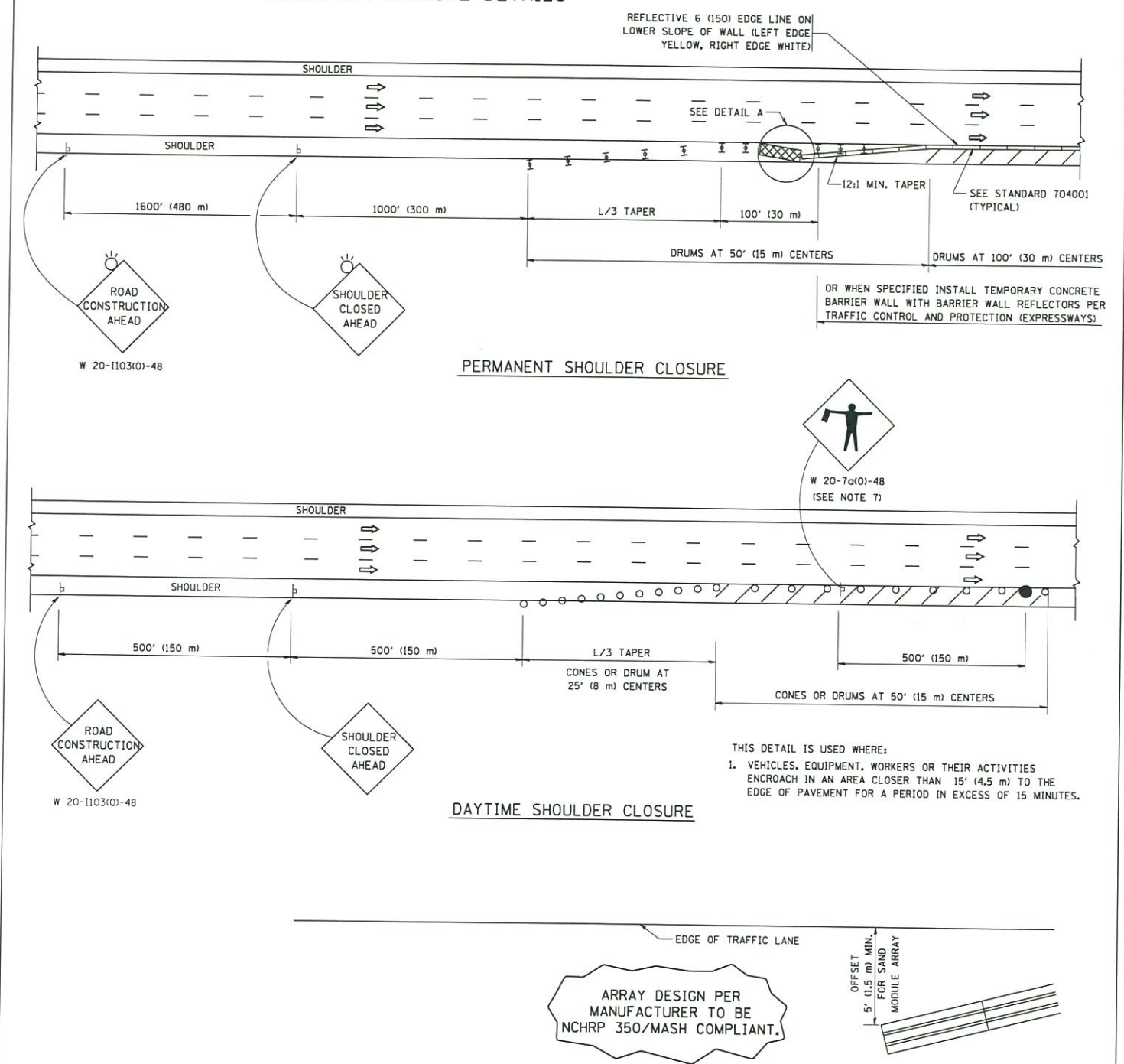
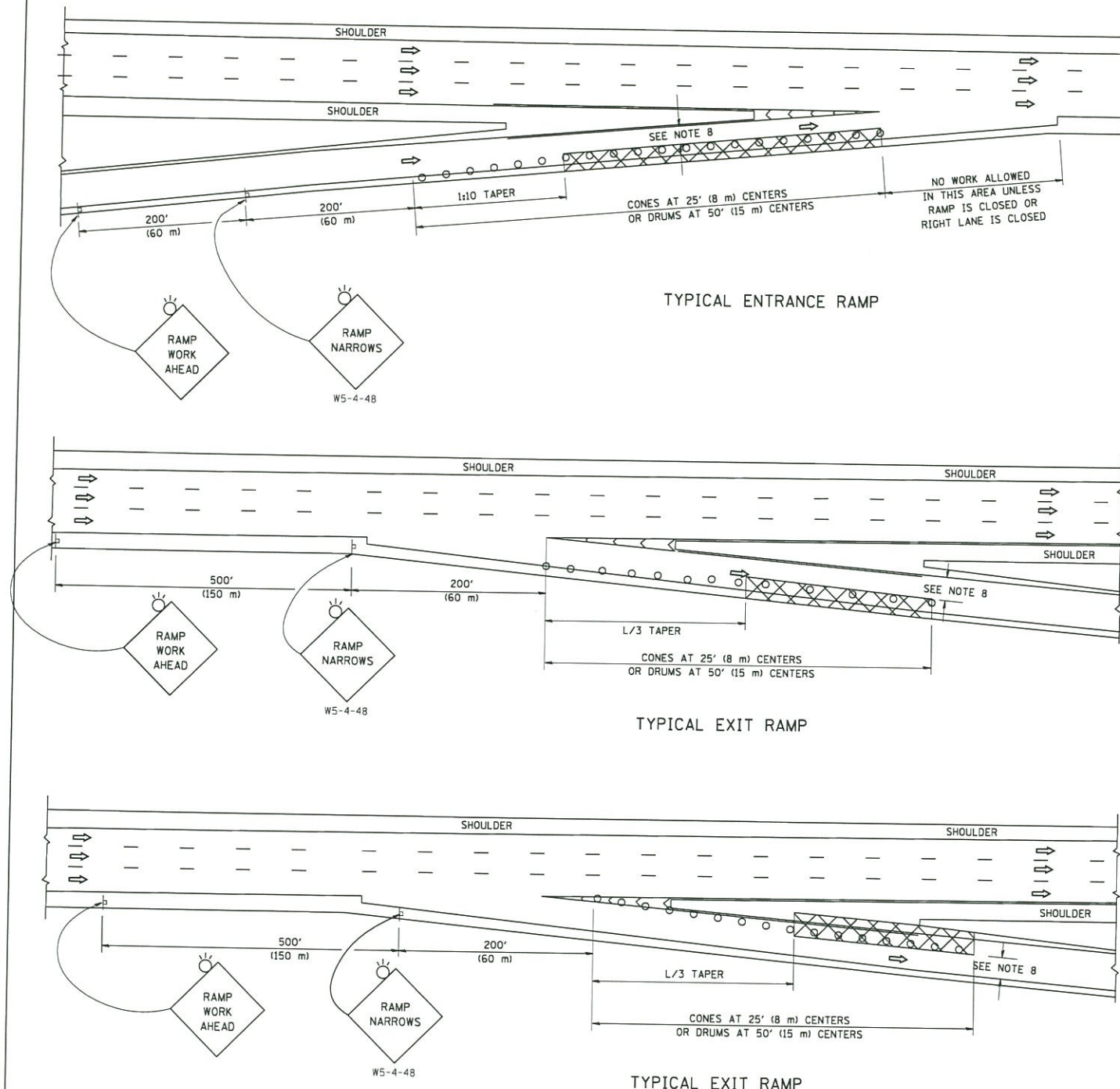
TRAFFIC CONTROL AND PROTECTION FOR
SIDE ROADS, INTERSECTIONS, AND DRIVEWAYS

SCALE: NONE SHEET NO. 1 OF 1 SHEETS STA. TO STA.

F.A. RTE.	SECTION	COUNTY	TOTAL SHEETS	SHEET NO.
VAR 2013-078DTR	VAR.	VAR.	7	6
TC-10			CONTRACT NO. 60X66	
FED. ROAD DIST. NO. 1 (ILLINOIS) FED. AID PROJECT				

PARTIAL RAMP CLOSURE DETAILS

SHOULDER CLOSURE DETAILS



SYMBOLS

- ACTIVE WORK AREA
- SIGN ON PORTABLE OR PERMANENT SUPPORT
- FLAGGER WITH CONTROL SIGN
- TYPE II BARRICADE OR DRUM WITH STEADY BURN MONO-DIRECTIONAL LIGHT
- CONE, DRUM OR BARRICADE
- IMPACT ATTENUATOR OF TYPE AND TEST LEVEL SPECIFIED

GENERAL NOTES

1. THE "L" DISTANCE EQUALS:
SPEED LIMIT FORMULAS
45 mph (80 km/h) METRIC ENGLISH
OR GREATER: L=0.65(W/S) L=(W/S)
W = WIDTH OF OFFSET IN FEET (METERS)
S = NORMAL POSTED SPEED MPH (KM/H)
2. PLASTIC DRUMS WITH HIGH PERFORMANCE REFLECTIVE SHEETING AND STEADY BURNING LIGHTS ARE REQUIRED FOR ALL NIGHTTIME CLOSURES.
3. ALL SIGNS SHALL BE POST MOUNTED IF THE CLOSURE TIME EXCEEDS FOUR DAYS.
4. FLASHING LIGHTS SHALL BE USED DURING THE HOURS OF DARKNESS AND SHALL BE INSTALLED ABOVE THE FIRST TWO SETS OF SIGNS.
5. THE IMPACT ATTENUATOR, TEMPORARY IS NOT REQUIRED WHEN THE TEMPORARY CONCRETE BARRIER WALL IS PROTECTED BY OR IS TIED INTO THE EXISTING GUARDRAIL. IF OFFSET IS LESS THAN 5 FEET USE NARROW USE TYPE DEVICE TO MEET NCHRP350/MASH.
6. AUTHORIZATION FROM THE DISTRICT'S BUREAU OF TRAFFIC IS REQUIRED FOR ALL FREEWAY CLOSURES.
7. THE FLAGGER AND FLAGGER SIGN ARE REQUIRED AT THE ABOVE WORK SITES WHEN:
a. FOUR OR MORE WORK VEHICLES ENTER THE TRAFFIC LANES IN A ONE HOUR PERIOD.
b. THE WORK ACTIVITY REQUIRES FREQUENT ENCR OACHMENT INTO THE LANE OPEN TO TRAFFIC.
THE FLAGGER SHALL BE STATIONED APPROXIMATELY 100' (30 m) TO 200' (60 m) IN ADVANCE OF THE WORKERS.
8. 12" MIN. WIDTH TANGENT SECTION
16" MIN. WIDTH CURVE SECTION.

ARRAY DESIGN PER MANUFACTURER TO BE NCHRP 350/MASH COMPLIANT.

DETAIL "A"
IMPACT ATTENUATOR, TEMPORARY
(SEE NOTE 5)

ALL DIMENSIONS ARE IN INCHES (MILLIMETERS) UNLESS OTHERWISE SHOWN.

FILE NAME =	USER NAME = footemj	DESIGNED -	REVISED - J.A.F. 12-06
ct:\p_w\work\pwidot\footemj\d0108315\ct17.dgn		DRAWN - D.W.S.	REVISED - S.P.B. 01-07
		CHECKED -	REVISED - S.P.B. 12-09
		DATE - 11-96	REVISED - M.D. 06-13

STATE OF ILLINOIS
DEPARTMENT OF TRANSPORTATION

TRAFFIC CONTROL DETAILS FOR FREEWAY
SHOULDER CLOSURES AND PARTIAL RAMP CLOSURES
SCALE: NONE SHEET NO. 1 OF 1 SHEETS STA. TO STA.

F.A. RTE.	SECTION	COUNTY	TOTAL SHEETS	SHEET NO.
VAL 2013-078 DTL	TC-17	VAL.	7	7
FED. ROAD DIST. NO. 1 ILLINOIS FED. AID PROJECT				

CONTRACT NO. 60X66