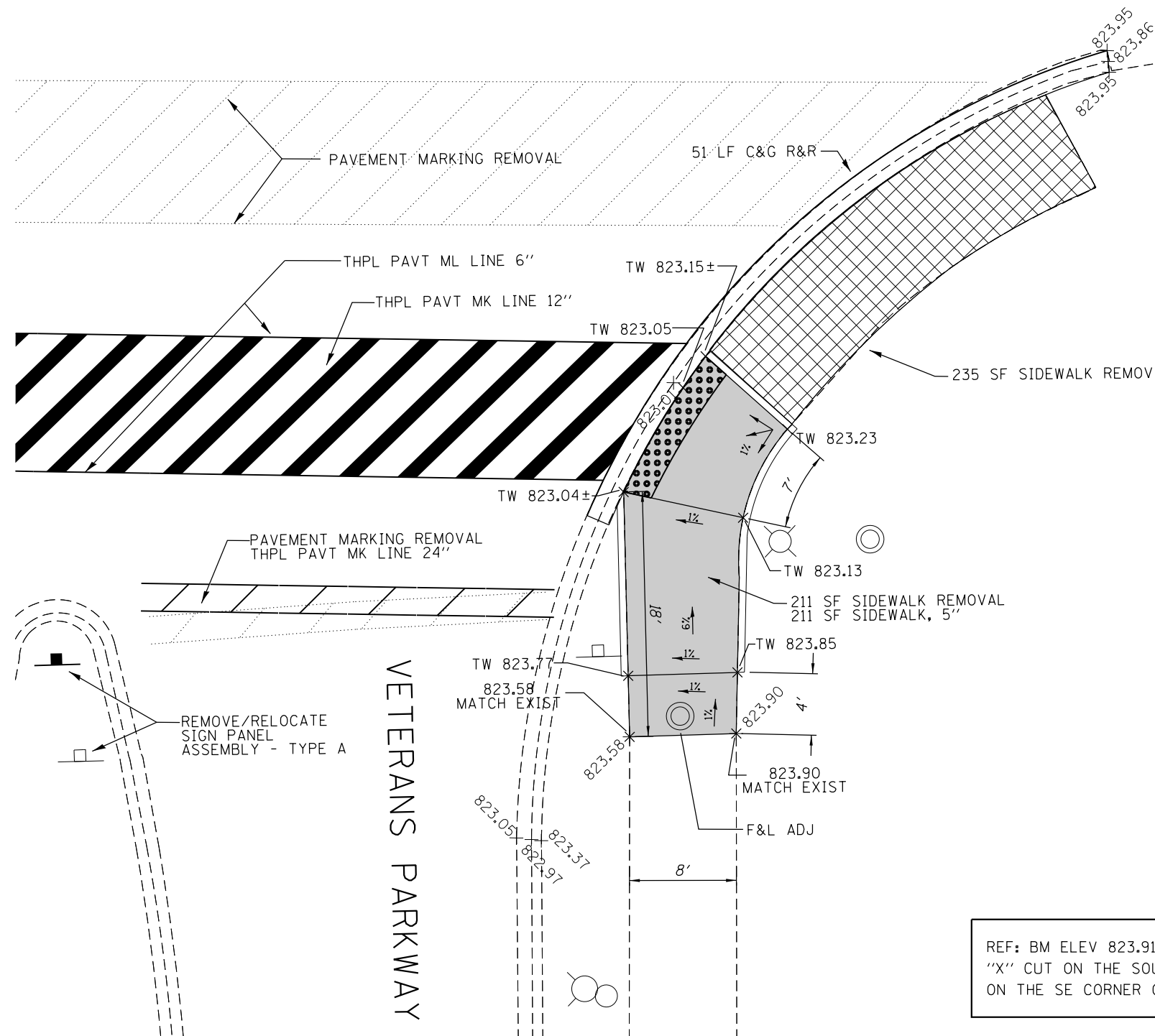
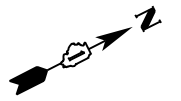
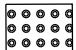

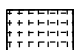


IL. ROUTE. 31



LEGEND

-  DETECTABLE WARNINGS
-  SIDEWALK REMOVAL, REPLACE W/ TOP SOIL & SOD
-  CLASS D PATCH
- TW TOP OF WALK PROPOSED ELEVATION

REF: BM ELEV 823.91
 "X" CUT ON THE SOUTHEASTERLY LOWER FLANGE BOLT OF FIRE HYDRANT ON THE SE CORNER OF IL 31 AND VETERANS PARKWAY

FILE NAME =	USER NAME = Bilgramisa	DESIGNED -	REVISED -
ct:\pw\work\pwidot\bilgramisa\d0362927\0107714-sh1-McHenry.dgn		DRAWN -	REVISED -
Default	PLOT SCALE = 10.0000' / in.	CHECKED -	REVISED -
	PLOT DATE = 12/18/2013	DATE -	REVISED -

STATE OF ILLINOIS
 DEPARTMENT OF TRANSPORTATION

ROADWAY PLAN - IL 31 (VETERANS PARKWAY TO BULL VALLEY RD)
 AT VETERANS PARKWAY (NORTH)

SCALE: 1:5 SHEET OF SHEETS STA. TO STA.

F.A. RTE.	SECTION	COUNTY	TOTAL SHEETS	SHEET NO.
VAR	2013-0581	MCHENRY	58	42
CONTRACT NO. 60X36			ILLINOIS FED. AID PROJECT	