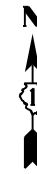
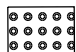

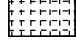


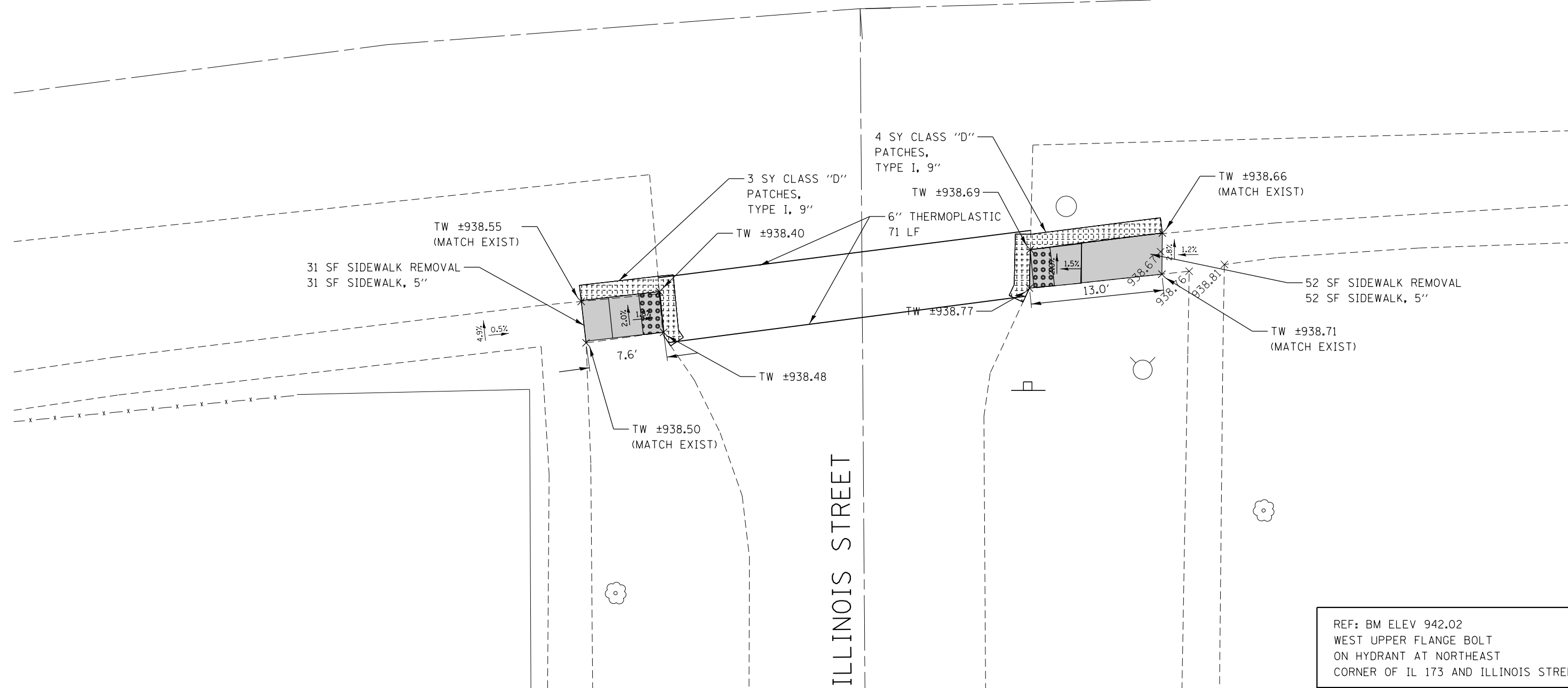
LEGEND



-  DETECTABLE WARNINGS
-  SIDEWALK REMOVAL
-  CLASS D PATCH
- TW TOP OF WALK
PROPOSED ELEVATION

IL. ROUTE 173

ILLINOIS STREET



REF: BM ELEV 942.02
 WEST UPPER FLANGE BOLT
 ON HYDRANT AT NORTHEAST
 CORNER OF IL 173 AND ILLINOIS STREET

FILE NAME =	USER NAME = Bilgramisa	DESIGNED -	REVISED -
et:\pw\work\p\idot\bilgramisa\d0362927\0107714-shr-Hebron.dgn		DRAWN -	REVISED -
Default	PLOT SCALE = 10.0000' / in.	CHECKED -	REVISED -
	PLOT DATE = 12/18/2013	DATE -	REVISED -

**STATE OF ILLINOIS
 DEPARTMENT OF TRANSPORTATION**

**ROADWAY PLAN - IL 173 (KENNEDY DR. TO CENTER ST.)
 AT ILLINOIS STREET**

SCALE: 1:5 SHEET OF SHEETS STA. TO STA.

F.A. RTE.	SECTION	COUNTY	TOTAL SHEETS	SHEET NO.
VAR.	2013-0581	MCHEMRY	58	24
CONTRACT NO. 60X36				
ILLINOIS FED. AID PROJECT				