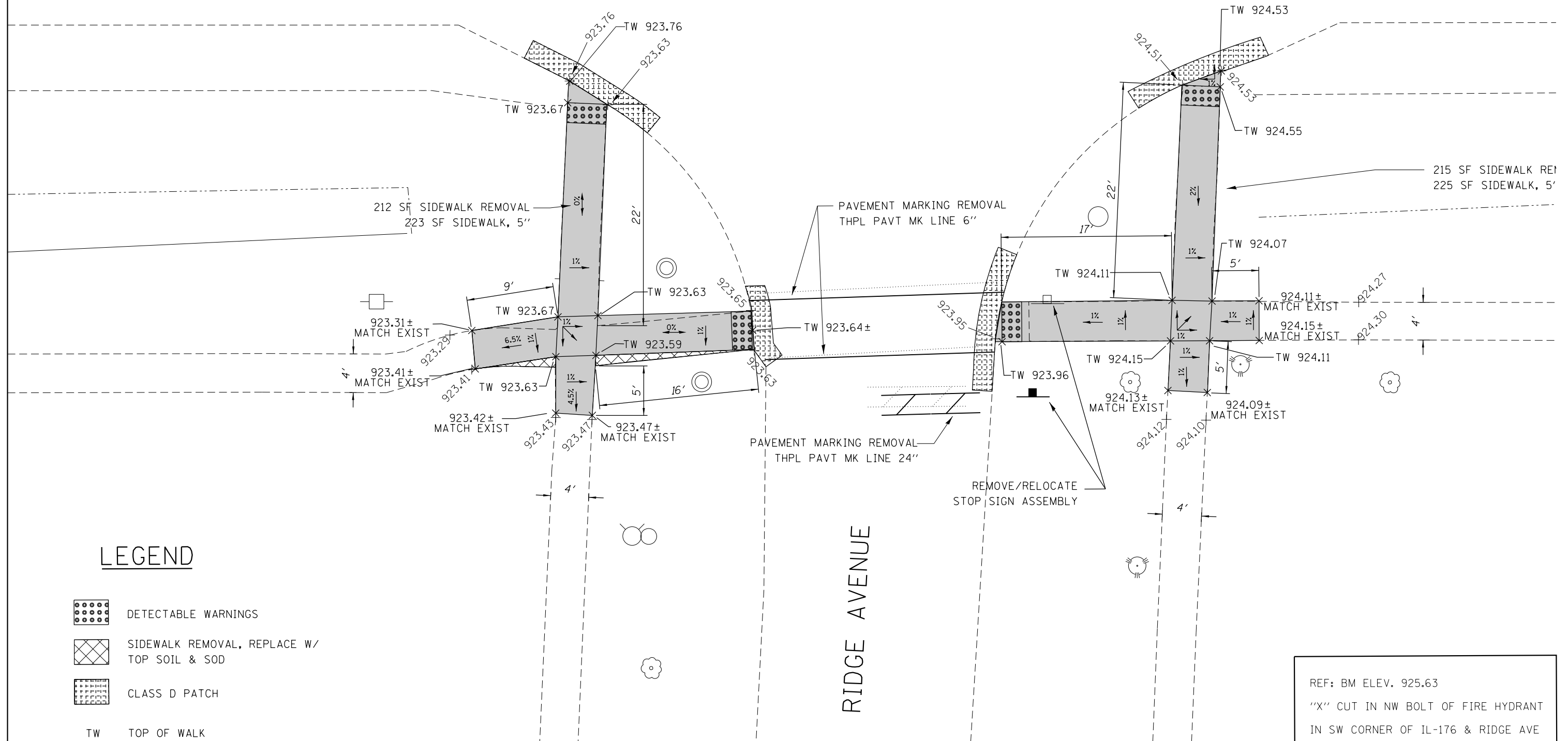
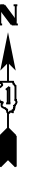
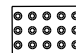




IL. ROUTE 176

IL. ROUTE 176



**LEGEND**

-  DETECTABLE WARNINGS
-  SIDEWALK REMOVAL, REPLACE W/  
TOP SOIL & SOD
-  CLASS D PATCH
- TW TOP OF WALK  
PROPOSED ELEVATION

REF: BM ELEV. 925.63  
 "X" CUT IN NW BOLT OF FIRE HYDRANT  
 IN SW CORNER OF IL-176 & RIDGE AVE

FILE NAME =	USER NAME = Bilgramisa	DESIGNED -	REVISED -
et:\pwork\pwork\bilgramisa\d0362927\0107714-shr-CrystalLake.dgn		DRAWN -	REVISED -
Default	PLOT SCALE = 10.0000' / in.	CHECKED -	REVISED -
	PLOT DATE = 12/18/2013	DATE -	REVISED -

**STATE OF ILLINOIS  
 DEPARTMENT OF TRANSPORTATION**

**ROADWAY PLAN - IL 176 (US 14 TO IL 31)  
 AT RIDGE AVE (SOUTH)**

SCALE: 1:5 SHEET OF SHEETS STA. TO STA.

F.A. RTE.	SECTION	COUNTY	TOTAL SHEETS	SHEET NO.
VAR	2013-0581	MCHENRY	58	12
CONTRACT NO. 60X36			ILLINOIS FED. AID PROJECT	