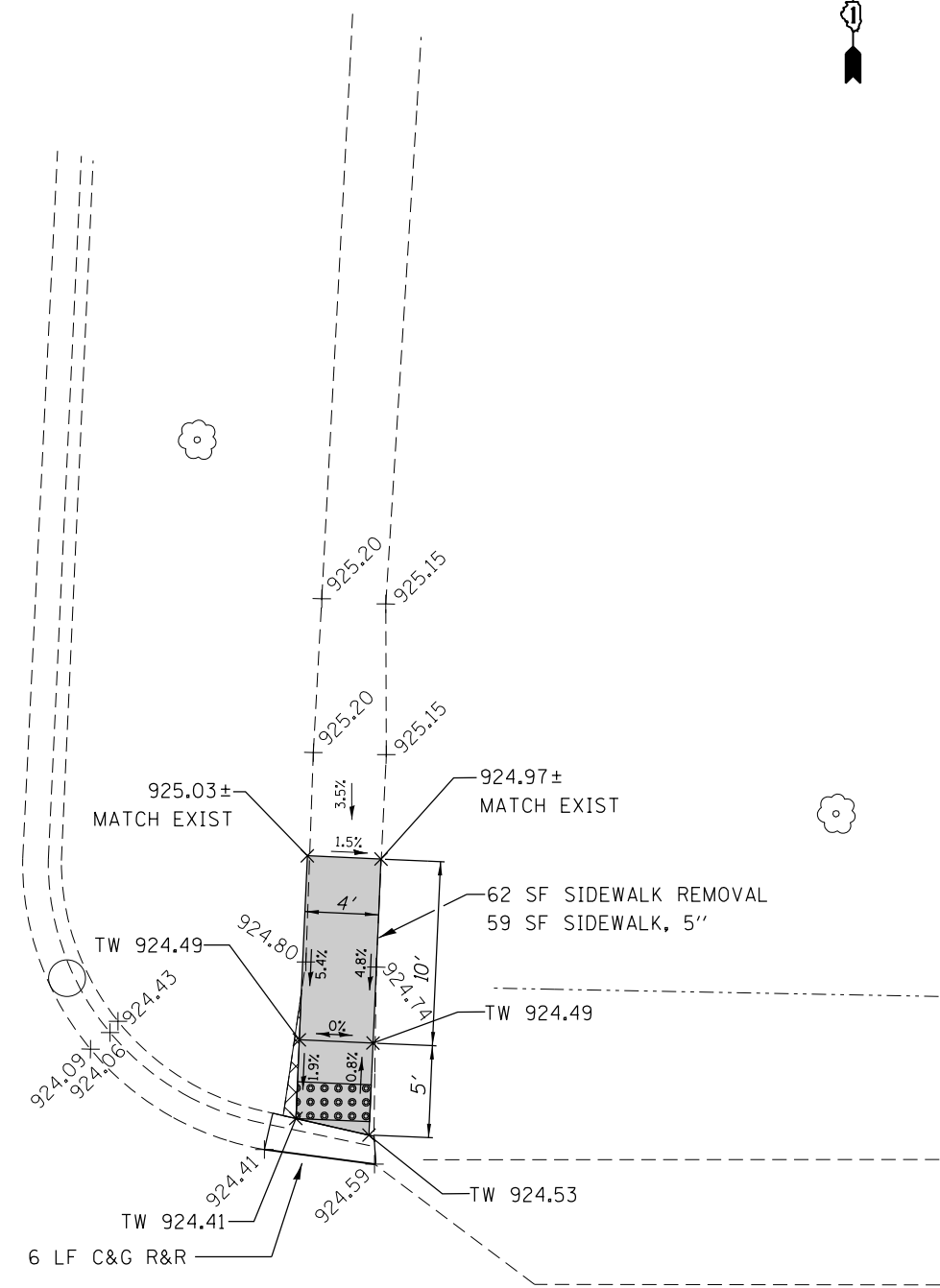
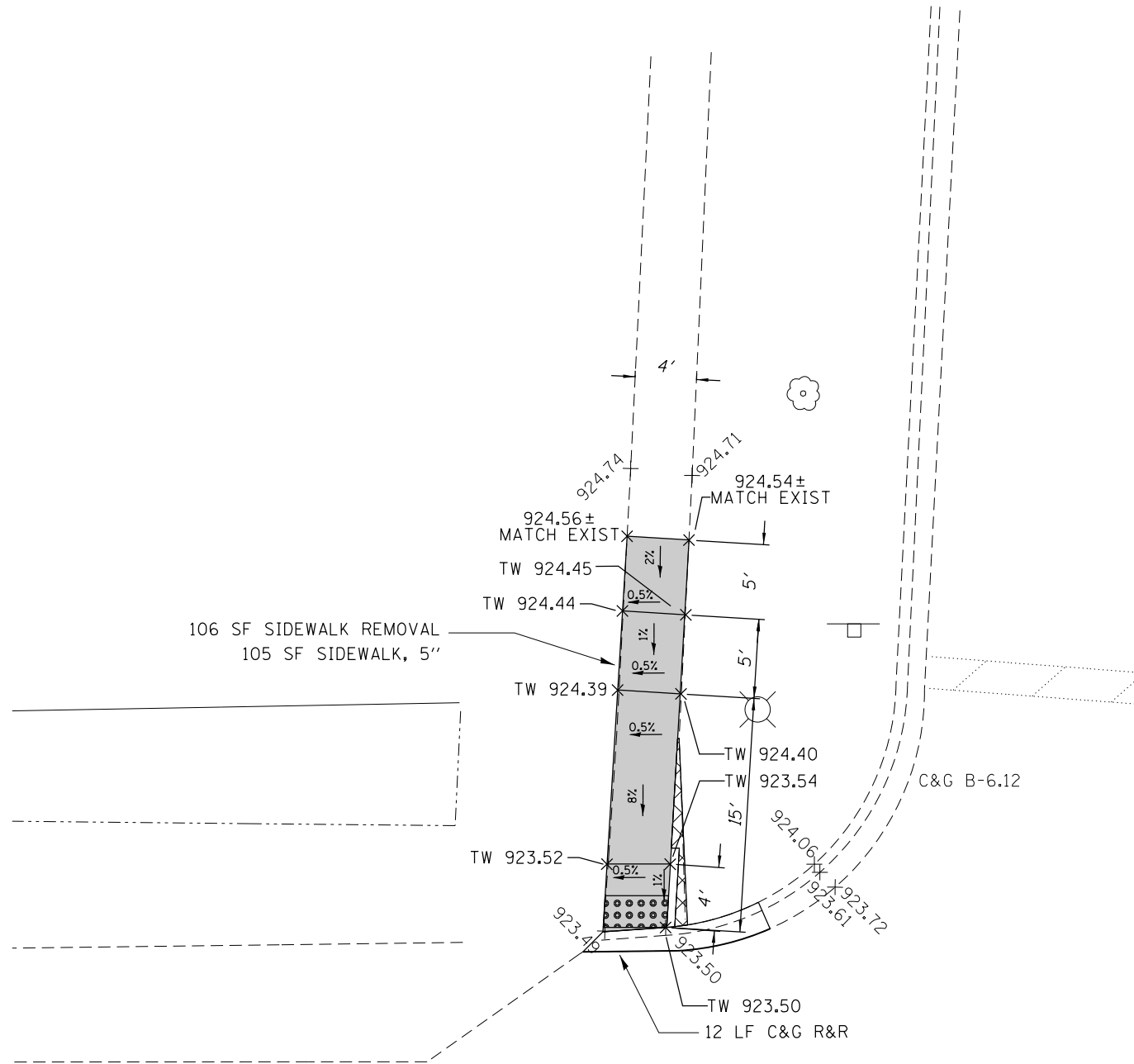




RIDGE AVENUE



LEGEND

- DETECTABLE WARNINGS
- SIDEWALK REMOVAL, REPLACE W/
TOP SOIL & SOD
- CLASS D PATCH
- TW TOP OF WALK
PROPOSED ELEVATION

IL. ROUTE 176

REF: BM ELEV. 925.63
 "X" CUT IN NW BOLT OF FIRE HYDRANT
 IN SW CORNER OF IL-176 & RIDGE AVE

FILE NAME =	USER NAME = PencePL	DESIGNED -	REVISED - PLP 01/16/2014
ct:\pwork\pwork\pencepl\d0362927\0107	14-sh1-CrystalLake.dgn	DRAWN -	REVISED -
Default	PLOT SCALE = 10.0000' / in.	CHECKED -	REVISED -
	PLOT DATE = 1/22/2014	DATE -	REVISED -

**STATE OF ILLINOIS
DEPARTMENT OF TRANSPORTATION**

**ROADWAY PLAN - IL 176 (US 14 TO IL 31)
AT RIDGE AVE (NORTH)**

SCALE: 1:5 SHEET OF SHEETS STA. TO STA.

F.A. RTE.	SECTION	COUNTY	TOTAL SHEETS	SHEET NO.
VAR	2013-0581	MCHENRY	58	11
CONTRACT NO. 60X36				
ILLINOIS FED. AID PROJECT				