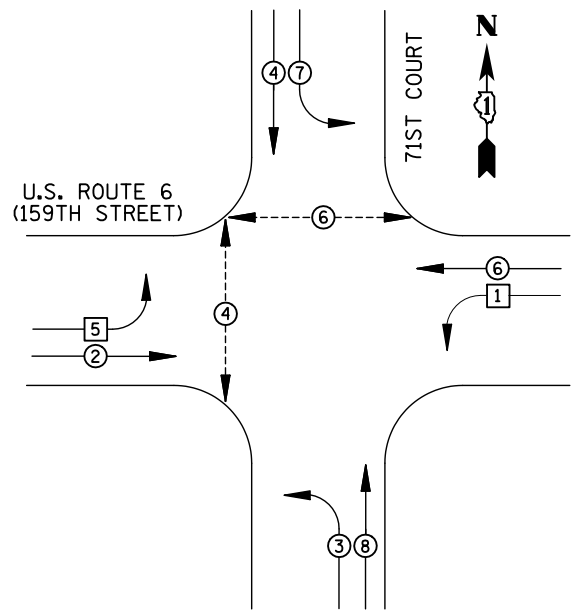
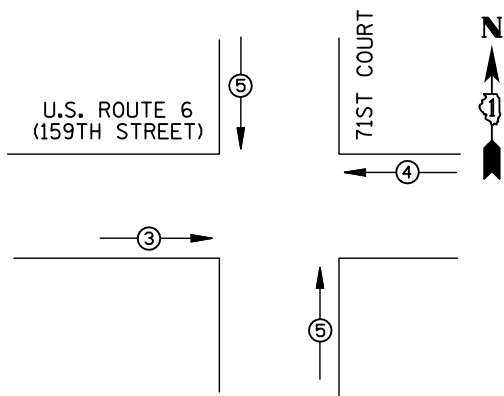


PROPOSED CONTROLLER SEQUENCE



PROPOSED PHASE DESIGNATION DIAGRAM



EMERGENCY VEHICLE PREEMPTORS				
PRIORITY LANE INTERVAL	3	4	5	
MOVEMENT	→	↔	↑	

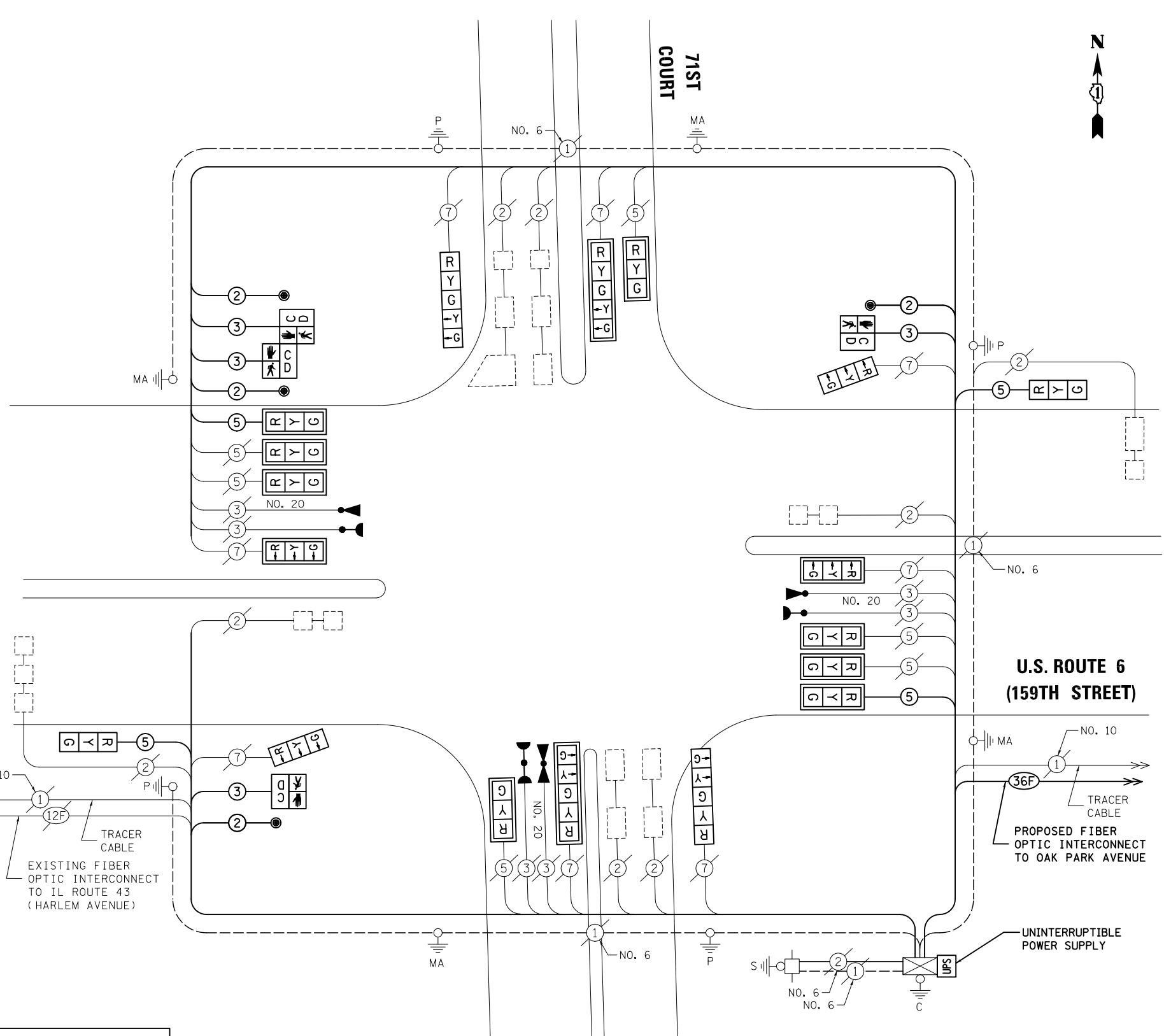
EXISTING EMERGENCY VEHICLE PREEMPTION SEQUENCE

I.D.O.T. TRAFFIC SIGNAL INSTALLATION ELECTRICAL SERVICE REQUIREMENTS					
TYPE	NO. LAMPS	WATTAGE		%OPERATION	TOTAL WATTAGE
		INCAND.	LED		
SIGNAL (RED)	16	135	17	0.50	153
(YELLOW)	12	135	25	0.25	112.5
(GREEN)	12	135	15	0.25	67.5
ARROW	16	135	12	0.10	9.6
PED. SIGNAL	4	90	25	1.00	100
CONTROLLER	1	100	100	1.00	100
ILLUM. SIGN		84		0.05	
FLASHER		135	25	0.50	

ENERGY COSTS TO: TOTAL = 542.6
 ILLINOIS DEPARTMENT OF TRANSPORTATION
 201 WEST CENTER COURT
 SCHAUMBURG, IL 60196-1096
 ENERGY SUPPLY CONTACT: LEONARD ANDERSON
 PHONE: (708) 235-2346
 COMPANY: COMMONWEALTH EDISON

FILE NAME = \MICROST\352109\ XX-159TH @ 71ST CT CAB.DGN
 USER NAME = JGC
 DESIGNED - BPT
 DRAWN - JGC/RDS
 PLOT SCALE = NOT TO SCALE
 PLOT DATE = 11-29-13

REVISIONS:
 REVISED -
 REVISED -
 REVISED -
 REVISED -
 DATE - 11-29-13



CABLE PLAN

SEE NEXT SHEET FOR SCHEDULE OF QUANTITIES

NOTE: THE TRAFFIC SIGNAL CONTROL EQUIPMENT FOR THIS PROJECT SHALL BE "EAGLE" TO MATCH THE EXISTING ADJACENT SYSTEM.

THE END OF THE TRACER CABLE SHALL BE CONTINUOUS AND EXTEND INTO A CONTROLLER CABINET.

STATE OF ILLINOIS DEPARTMENT OF TRANSPORTATION

CABLE PLAN, PHASE DESIGNATION DIAGRAM AND EMERGENCY VEHICLE PREEMPTION U.S. ROUTE 6 (159TH STREET) AT 71ST COURT

SCALE: N.T.S. SHEET NO. OF SHEETS STA. TO STA.

PREPARED BY:
CEMCON, Ltd.
 Consulting Engineers, Land Surveyors & Planners
 2280 White Oak Circle, Suite 100
 Aurora, Illinois 60504-9675
 Ph: 630.862.2100 Fax: 630.862.2199
 E-Mail: cadd@cemcon.com Website: www.cemcon.com

F.A.P. RTE.	SECTION	COUNTY	TOTAL SHEETS	SHEET NO.
351	2013-061TS	COOK	30	21

CONTRACT NO. 60X33
 FED. ROAD DIST. NO. ILLINOIS FED. AID PROJECT