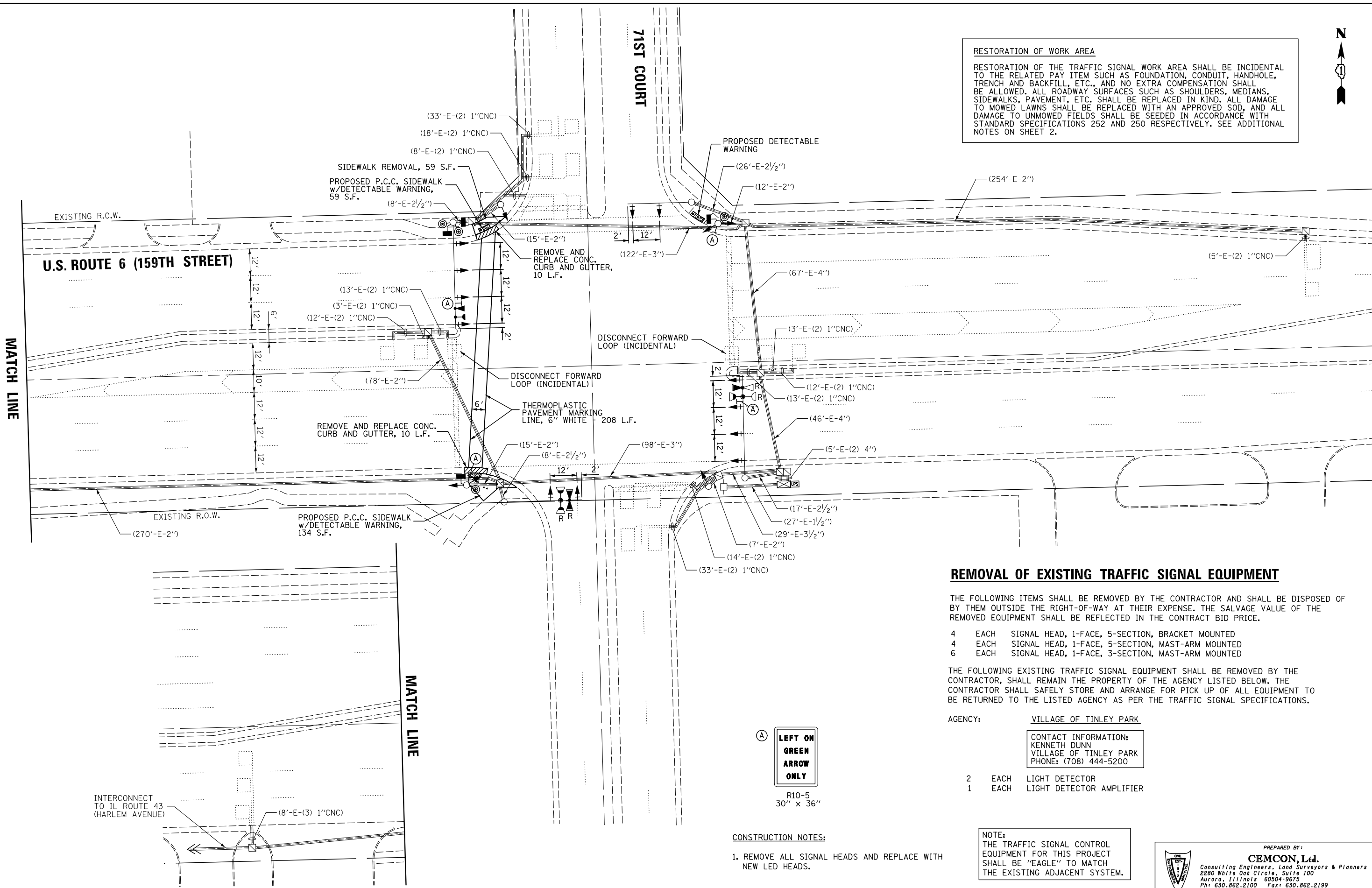




RESTORATION OF WORK AREA

RESTORATION OF THE TRAFFIC SIGNAL WORK AREA SHALL BE INCIDENTAL TO THE RELATED PAY ITEM SUCH AS FOUNDATION, CONDUIT, HANDHOLE, TRENCH AND BACKFILL, ETC., AND NO EXTRA COMPENSATION SHALL BE ALLOWED. ALL ROADWAY SURFACES SUCH AS SHOULDERS, MEDIANS, SIDEWALKS, PAVEMENT, ETC. SHALL BE REPLACED IN KIND. ALL DAMAGE TO MOWED LAWNS SHALL BE REPLACED WITH AN APPROVED SOD, AND ALL DAMAGE TO UNMOWED FIELDS SHALL BE SEEDED IN ACCORDANCE WITH STANDARD SPECIFICATIONS 252 AND 250 RESPECTIVELY. SEE ADDITIONAL NOTES ON SHEET 2.



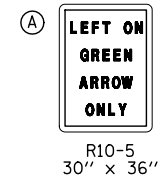
REMOVAL OF EXISTING TRAFFIC SIGNAL EQUIPMENT

THE FOLLOWING ITEMS SHALL BE REMOVED BY THE CONTRACTOR AND SHALL BE DISPOSED OF BY THEM OUTSIDE THE RIGHT-OF-WAY AT THEIR EXPENSE. THE SALVAGE VALUE OF THE REMOVED EQUIPMENT SHALL BE REFLECTED IN THE CONTRACT BID PRICE.

- 4 EACH SIGNAL HEAD, 1-FACE, 5-SECTION, BRACKET MOUNTED
- 4 EACH SIGNAL HEAD, 1-FACE, 5-SECTION, MAST-ARM MOUNTED
- 6 EACH SIGNAL HEAD, 1-FACE, 3-SECTION, MAST-ARM MOUNTED

THE FOLLOWING EXISTING TRAFFIC SIGNAL EQUIPMENT SHALL BE REMOVED BY THE CONTRACTOR, SHALL REMAIN THE PROPERTY OF THE AGENCY LISTED BELOW. THE CONTRACTOR SHALL SAFELY STORE AND ARRANGE FOR PICK UP OF ALL EQUIPMENT TO BE RETURNED TO THE LISTED AGENCY AS PER THE TRAFFIC SIGNAL SPECIFICATIONS.

- AGENCY: VILLAGE OF TINLEY PARK
- CONTACT INFORMATION:
KENNETH DUNN
VILLAGE OF TINLEY PARK
PHONE: (708) 444-5200
- 2 EACH LIGHT DETECTOR
 - 1 EACH LIGHT DETECTOR AMPLIFIER



- CONSTRUCTION NOTES:**
- REMOVE ALL SIGNAL HEADS AND REPLACE WITH NEW LED HEADS.

NOTE:
THE TRAFFIC SIGNAL CONTROL EQUIPMENT FOR THIS PROJECT SHALL BE "EAGLE" TO MATCH THE EXISTING ADJACENT SYSTEM.

PREPARED BY:
CEMCON, Ltd.
Consulting Engineers, Land Surveyors & Planners
2280 White Oak Circle, Suite 100
Aurora, Illinois 60504-9675
Ph: 630.862.2100 Fax: 630.862.2199
E-Mail: cadd@cemcon.com Website: www.cemcon.com

FILE NAME = \MICROST\352109\ 159TH @ 71ST CT SIG.DGN

| | | |
|----------------------|-----------------|-----------|
| USER NAME = RDS | DESIGNED - BPT | REVISED - |
| PLOT SCALE = 1"=28' | DRAWN - RDS/JGC | REVISED - |
| PLOT DATE = 11-29-13 | CHECKED - BPT | REVISED - |
| | DATE - 11-29-13 | REVISED - |

**STATE OF ILLINOIS
DEPARTMENT OF TRANSPORTATION**

| | | | |
|--|-----------|-----------|--------------|
| TRAFFIC SIGNAL MODERNIZATION PLAN | | | |
| U.S. ROUTE 6 (159TH STREET) AT 71ST COURT | | | |
| SCALE: 1"=20' | SHEET NO. | OF SHEETS | STA. TO STA. |

| | | | | |
|---|------------|--------|--------------|-----------|
| F.A.P. RTE. | SECTION | COUNTY | TOTAL SHEETS | SHEET NO. |
| 351 | 2013-061TS | COOK | 30 | 20 |
| CONTRACT NO. 60X33 | | | | |
| FED. ROAD DIST. NO. ILLINOIS FED. AID PROJECT | | | | |