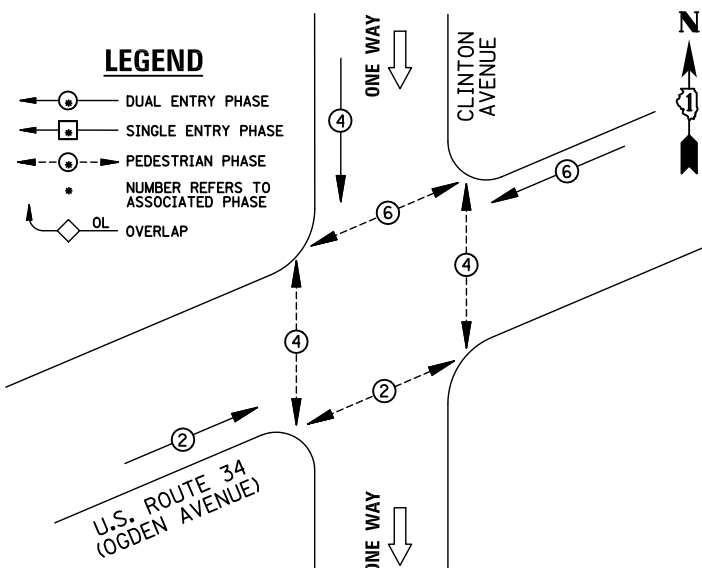
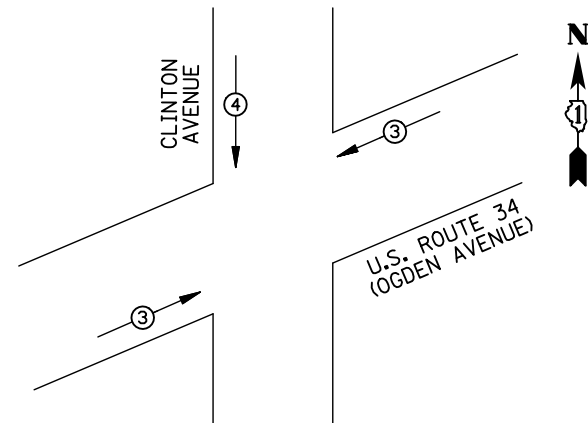


**EXISTING CONTROLLER SEQUENCE**



**EXISTING PHASE DESIGNATION DIAGRAM**



EMERGENCY VEHICLE PREEMPTORS			
EMERGENCY VEHICLE PREEMPTOR	3	4	
MOVEMENT	↔	↓	

**EXISTING EMERGENCY VEHICLE PREEMPTION SEQUENCE**

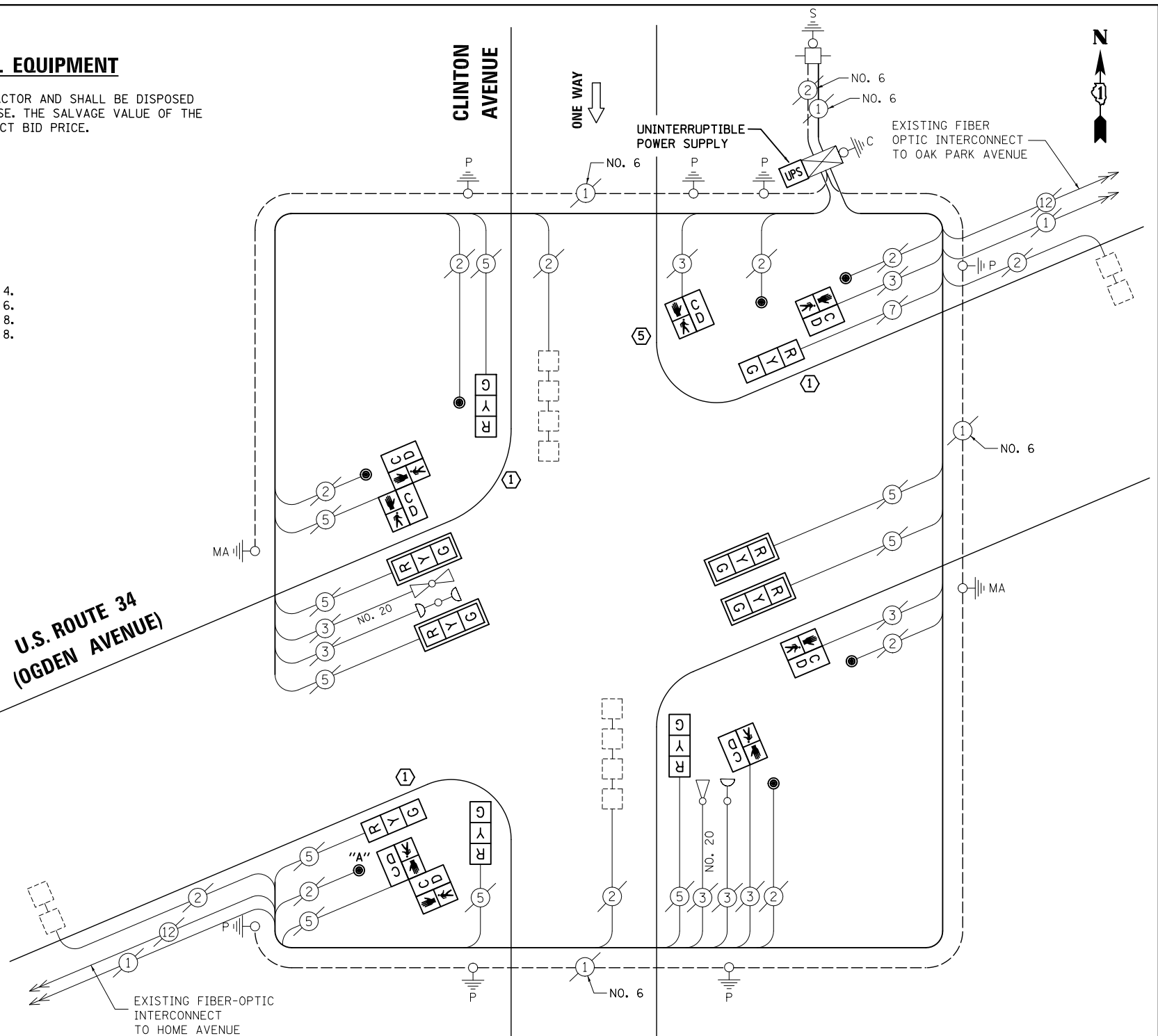
**REMOVAL OF EXISTING TRAFFIC SIGNAL EQUIPMENT**

THE FOLLOWING ITEMS SHALL BE REMOVED BY THE CONTRACTOR AND SHALL BE DISPOSED OF BY THEM OUTSIDE THE RIGHT-OF-WAY AT THEIR EXPENSE. THE SALVAGE VALUE OF THE REMOVED EQUIPMENT SHALL BE REFLECTED IN THE CONTRACT BID PRICE.

- 4 EACH TRAFFIC SIGNAL POST
- 9 EACH SIGNAL HEAD, 3-SECTION
- 4 EACH TRAFFIC SIGNAL BACKPLATE
- 8 EACH PEDESTRIAN SIGNAL HEAD
- 7 EACH PEDESTRIAN PUSH-BUTTON

**NOTE:**

PUSH-BUTTON "A" SHALL PLACE A CALL IN PHASES 2 AND 4.  
 PUSH-BUTTON "B" SHALL PLACE A CALL IN PHASES 4 AND 6.  
 PUSH-BUTTON "C" SHALL PLACE A CALL IN PHASES 6 AND 8.  
 PUSH-BUTTON "D" SHALL PLACE A CALL IN PHASES 2 AND 8.



**CABLE PLAN**

- ① REPLACE 14 FT. PAINTED POST, RE-USE EXISTING TYPE A CONCRETE FOUNDATION
- ⑤ REPLACE 10 FT. PAINTED POST, RE-USE EXISTING TYPE A CONCRETE FOUNDATION (SEE GENERAL NOTES)

NOTE:  
 THE TRAFFIC SIGNAL CONTROL EQUIPMENT FOR THIS PROJECT SHALL BE "EAGLE" TO MATCH THE EXISTING ADJACENT SYSTEM.

**SCHEDULE OF QUANTITIES**

**ITEM**

- MAINTENANCE OF EXISTING TRAFFIC SIGNAL INSTALLATION
- TRAFFIC SIGNAL POST, GALVANIZED STEEL 10 FT.
- TRAFFIC SIGNAL POST, GALVANIZED STEEL 14 FT.
- SIGNAL HEAD, LED, 1-FACE, 3-SECTION, MAST-ARM MOUNTED
- SIGNAL HEAD, LED, 1-FACE, 3-SECTION, BRACKET MOUNTED
- PEDESTRIAN SIGNAL HEAD, LED, 1-FACE, BRACKET MOUNTED WITH COUNTDOWN TIMER
- PEDESTRIAN SIGNAL HEAD, LED, 2-FACE, BRACKET MOUNTED WITH COUNTDOWN TIMER
- TRAFFIC SIGNAL BACKPLATE, LOUVERED, ALUMINUM
- MODIFY EXISTING CONTROLLER CABINET
- REMOVE EXISTING TRAFFIC SIGNAL EQUIPMENT
- UNINTERRUPTABLE POWER SUPPLY, SPECIAL
- PEDESTRIAN PUSH-BUTTON, NON-LATCHING

**UNIT QUANTITY**

- EACH 1
- EACH 1
- EACH 3
- EACH 4
- EACH 5
- EACH 4
- EACH 2
- EACH 4
- EACH 1
- EACH 1
- EACH 1
- EACH 7

I.D.O.T TRAFFIC SIGNAL INSTALLATION ELECTRICAL SERVICE REQUIREMENTS					TOTAL WATTAGE
TYPE	NO. LAMPS	WATTAGE INCAND.	LED	%OPERATION	
SIGNAL (RED)	9	135	17	0.50	76.5
(YELLOW)	9	135	25	0.25	56.25
(GREEN)	9	135	15	0.25	33.75
ARROW		135	12	0.10	
PED. SIGNAL	8	90	25	1.00	200
CONTROLLER	1	100	100	1.00	100
ILLUM. SIGN		84	100	0.50	
FLASHER		135	25	0.50	
ENERGY COSTS TO: ILLINOIS DEPARTMENT OF TRANSPORTATION 201 WEST CENTER COURT SCHAUMBURG, IL 60196-1096					TOTAL = 466.5
ENERGY SUPPLY CONTACT: X					
PHONE: X					
COMPANY: X					

FILE NAME = \MICROST\352108\26-5575.DGN	USER NAME = JGC	DESIGNED - BPT	REVISED -
		DRAWN - JGC/RDS	REVISED -
	PLOT SCALE = NOT TO SCALE	CHECKED - BPT	REVISED -
	PLOT DATE = X	DATE - 12-04-13	REVISED -

STATE OF ILLINOIS DEPARTMENT OF TRANSPORTATION

SCHEDULE OF QUANTITIES, CABLE PLAN, PHASE DESIGNATION DIAGRAM AND EMERGENCY VEHICLE PREEMPTION U.S. ROUTE 34 (OGDEN AVENUE) AT CLINTON AVENUE

SCALE: N.T.S. SHEET NO. OF SHEETS STA. TO STA.

PREPARED BY:  
**CEMCON, Ltd.**  
 Consulting Engineers, Land Surveyors & Planners  
 2280 White Oak Circle, Suite 100  
 Aurora, Illinois 60504-9675  
 Ph: 630.862.2100 Fax: 630.862.2199  
 E-Mail: cadd@cemcon.com Website: www.cemcon.com

F.A.P. RTE.	SECTION	COUNTY	TOTAL SHEETS	SHEET NO.
VAR.	2013-054TS	COOK	92	40
CONTRACT NO. 60X29				

FED. ROAD DIST. NO. ILLINOIS FED. AID PROJECT

TS# 5575 BERWYN