

F.A.U. RTE.	SECTION	COUNTY	TOTAL SHEETS	SHEET NO.
VAR.	2013-054TS	COOK	92	1
FED. ROAD DIST. NO.	ILLINOIS	CONTRACT NO.	60X29	

D-91-052-14

STATE OF ILLINOIS
DEPARTMENT OF TRANSPORTATION
DIVISION OF HIGHWAYS

**PROPOSED
HIGHWAY PLANS**

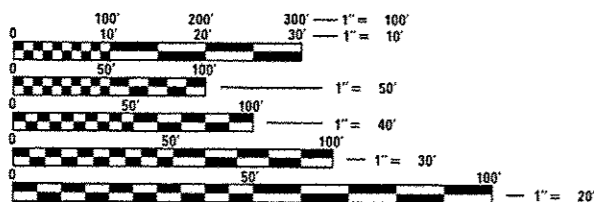
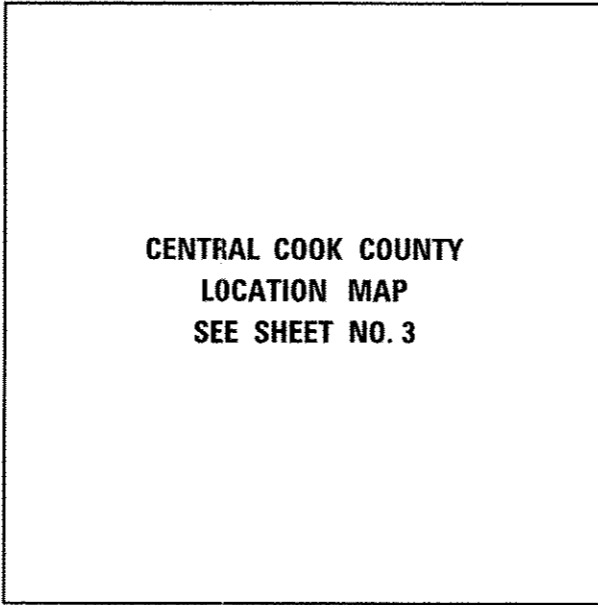
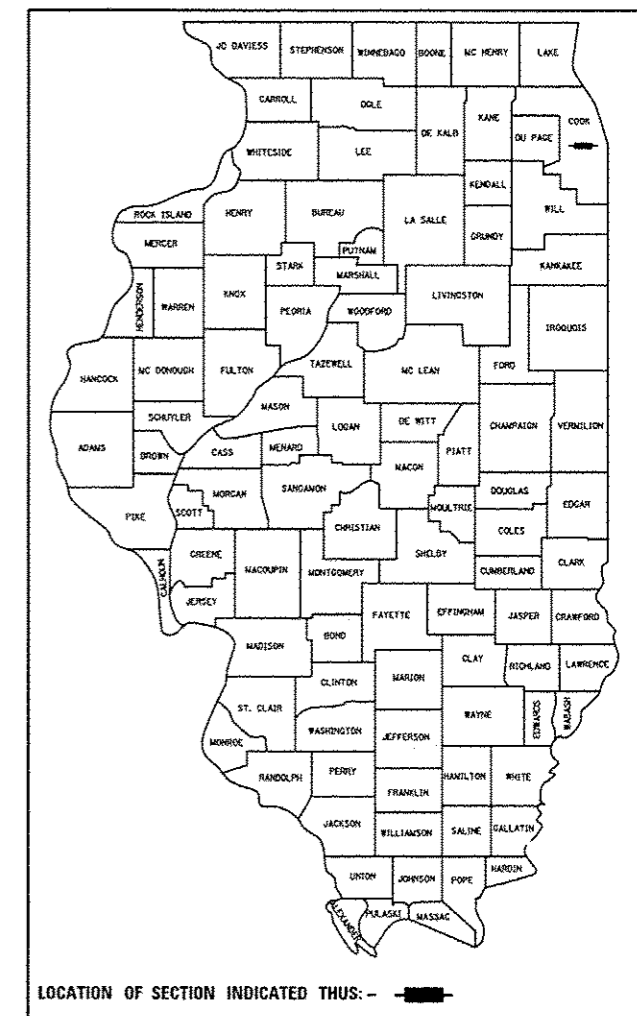
FOR INDEX OF SHEETS, SEE SHEET NO. 2

IDOT STANDARDS:

STD. NO.	TITLE
000001-05	STANDARD SYMBOLS, ABBREVIATIONS AND SYMBOLS
701001-02	OFF-ROAD OPERATIONS, 2L, 2W, MORE THAN 15' (4.5m) AWAY
701006-05	OFF-ROAD OPERATIONS, 2L, 2W, 15' (4.5m) TO 24" (600mm) FROM PAVEMENT EDGE
701101-04	OFF-ROAD OPERATIONS, MULTILANE, 15' (4.5m) TO 24" (600 mm) FROM PAVEMENT EDGE
701106-02	OFF-ROAD OPERATIONS, MULTILANE, MORE THAN 15' (4.5m) AWAY
701501-06	URBAN LANE CLOSURE, 2L, 2W, UNDIVIDED
701502-06	URBAN LANE CLOSURE, 2L, 2W, BIDIRECTIONAL LEFT TURN LANE
701601-09	URBAN LANE CLOSURE, MULTILANE, 1W, OR 2W WITH NONTRAVERSABLE MEDIAN
701606-09	URBAN LANE CLOSURE, MULTILANE, 2W WITH MOUNTABLE MEDIAN
701701-09	URBAN LANE CLOSURE, MULTILANE INTERSECTION
701901-03	TRAFFIC CONTROL DEVICES
720001-01	SIGN PANEL MOUNTING DETAILS
857001-01	STANDARD PHASE DESIGNATION DIAGRAMS AND PHASE SEQUENCES
862001-01	UNINTERRUPTABLE POWER SUPPLY (UPS)
880006-01	TRAFFIC SIGNAL MOUNTING DETAILS

**VARIOUS LOCATIONS IN CENTRAL COOK COUNTY
LIGHT EMITTING DIODE (LED) INSTALLATION
CONTRACT #3**

**SECTION 2013-054TS
COOK COUNTY
C-91-052-14**



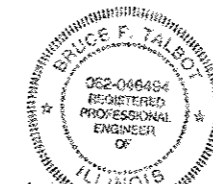
FULL SIZE PLANS HAVE BEEN PREPARED USING STANDARD ENGINEERING SCALES. REDUCED SIZED PLANS WILL NOT CONFORM TO STANDARD SCALES. IN MAKING MEASUREMENTS ON REDUCED PLANS, THE ABOVE SCALES MAY BE USED.

J.U.L.I.E.
JOINT UTILITY LOCATING INFORMATION FOR EXCAVATORS
1-800-892-0123
OR 811

PROJECT ENGINEER: SHAR-DAY SMITH (847) 705-4154
PROJECT MANAGER: SUDUD MAHMOUD (847) 705-4420

CONTRACT NO. 60X29

Bruce F. Talbot
DATE: 12-6-13
Expires 11-30-15



STATE OF ILLINOIS
DEPARTMENT OF TRANSPORTATION
DIVISION OF HIGHWAYS

SUBMITTED Dec-20 2013
John D. Baranzelli
DEPUTY DIRECTOR OF HIGHWAYS, REGION ENGINEER

Jan 24 2014
John D. Baranzelli P.E.
ENGINEER OF DESIGN AND ENVIRONMENT

Jan 24 2014
Omer Osman P.E.
DIRECTOR OF HIGHWAYS, CHIEF ENGINEER

PREPARED BY:
CEMCON, Ltd.
Consulting Engineers, Land Surveyors & Planners
2280 White Oak Circle, Suite 100
Aurora, Illinois 60504-9675
Ph: 630.862.2100 Fax: 630.862.2199
E-Mail: oadd@cemcon.com Website: www.cemcon.com

**PRINTED BY THE AUTHORITY
OF THE STATE OF ILLINOIS**