

WORK SHALL MEET THE REQUIREMENTS OF THE SPECIAL PROVISION, "TRAFFIC SIGNAL SPECIFICATIONS FOR DETECTOR LOOP REPLACEMENT AND/OR INSTALLATION ON ROADWAY GRINDING, RESURFACING AND PATCHING OPERATIONS". SPECIAL ATTENTION MUST BE MADE TO THE SECTIONS "INSPECTION OF CONSTRUCTION" AND "DETECTOR LOOP REPLACEMENT" FOR INSTALLATION AND INSPECTION REQUIREMENTS. LOOP REPLACEMENT WORK THAT DOES NOT MEET THE CONTRACT REQUIREMENTS SHALL NOT BE PAID. WORK NECESSARY TO COMPLETE THE LOOP REPLACEMENT WORK MAY BE ASSIGNED BY THE ENGINEER TO IDOT'S ELECTRICAL MAINTENANCE CONTRACTOR (EMC); ALL RELATED COSTS WILL BE THE RESPONSIBILITY OF THE CONTRACTOR.

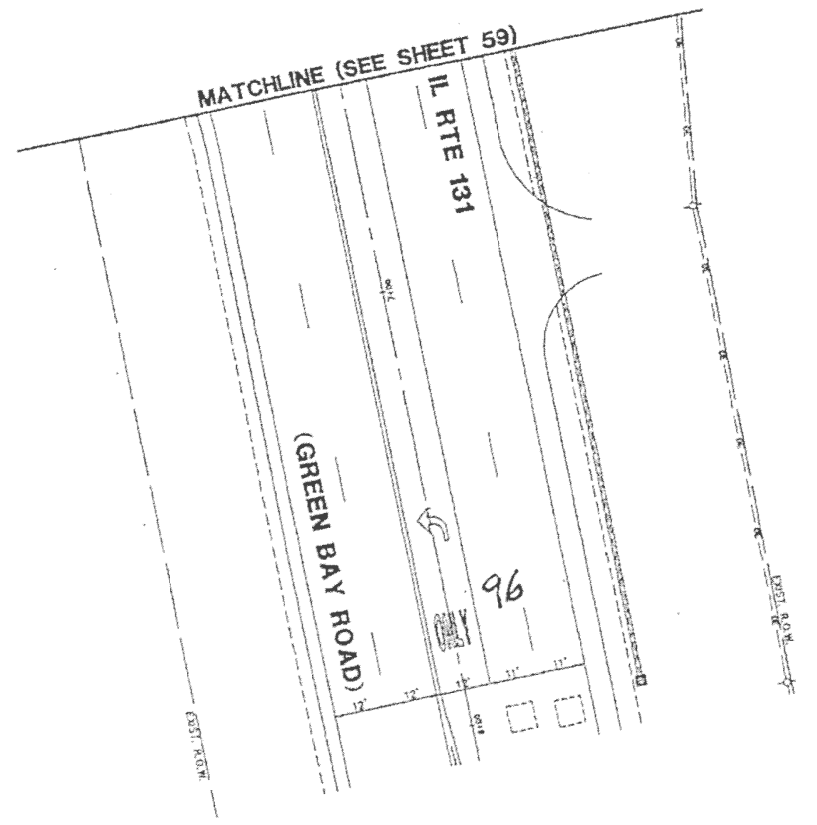
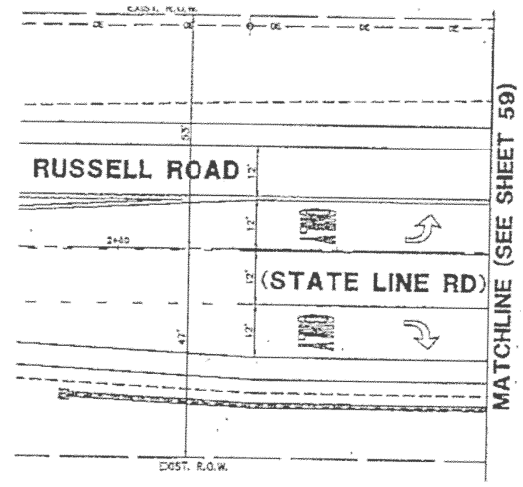
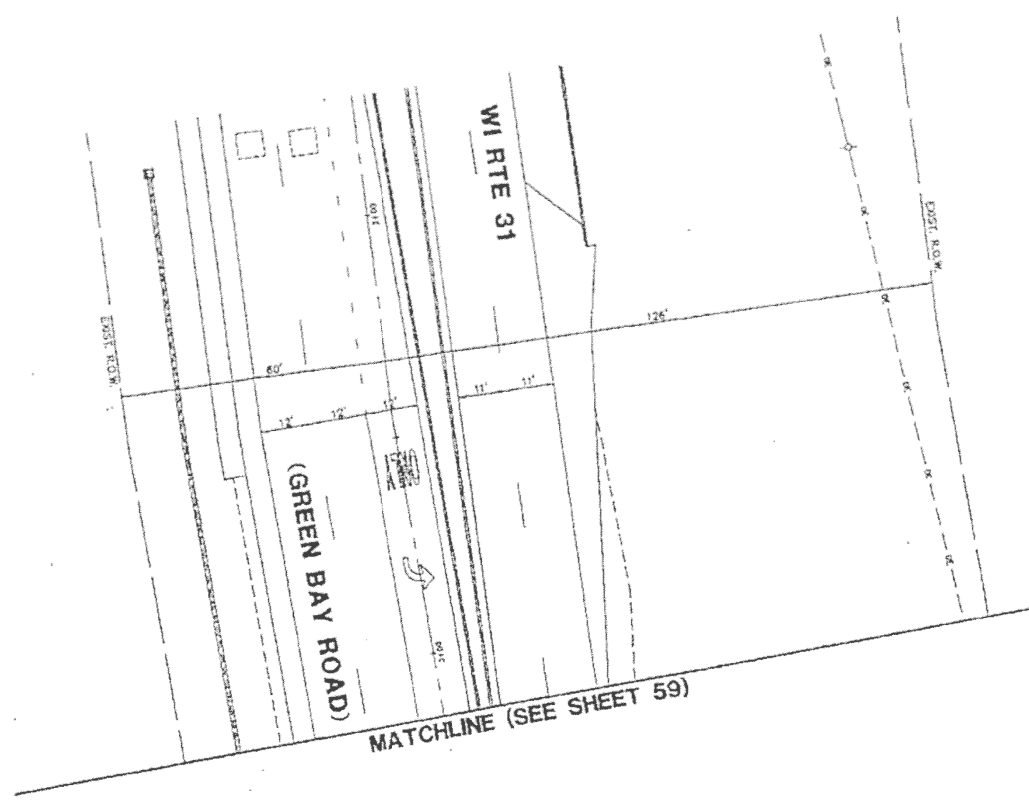
TRAFFIC SIGNAL LEGEND

	PROPOSED	EXISTING
SIGNAL HEAD WITH BACKPLATE	+	+
SIGNAL HEAD	△	△
GALVANIZED STEEL CONDUIT IN TRENCH OR PUSHED	---	---
DETECTOR LOOP	□	□
VEHICLE DETECTOR, NON COMPENSATED MAGNETIC TYPE		⊥
RACEWAY FOR MAGNETIC DETECTOR, TYPE I OR TYPE II		⊥

RECORD DRAWING

HOME TOWNE ELECTRIC, INC.

DATE 7/31/12



THIS PLAN IS FOR THE SOLE PURPOSE OF
DETECTOR LOOP REPLACEMENTS ONLY

FILE NAME =	USER NAME = josephm	DESIGNED -	REVISED -
ct:\pw\work\pidot\josephm\d0358445\D104	14-sh-t-plan.dgn	DRAWN -	REVISED -
Default	PLOT SCALE = 100.0000' / in.	CHECKED -	REVISED -
	PLOT DATE = 12/6/2013	DATE -	REVISED -

STATE OF ILLINOIS
DEPARTMENT OF TRANSPORTATION

SCALE: SHEET OF SHEETS STA. TO STA.

F.A.P. RTE.	SECTION	COUNTY	TOTAL SHEETS	SHEET NO.
880	32RS-6	LAKE	26	15
CONTRACT NO. 60X26			ILLINOIS FED. AID PROJECT	