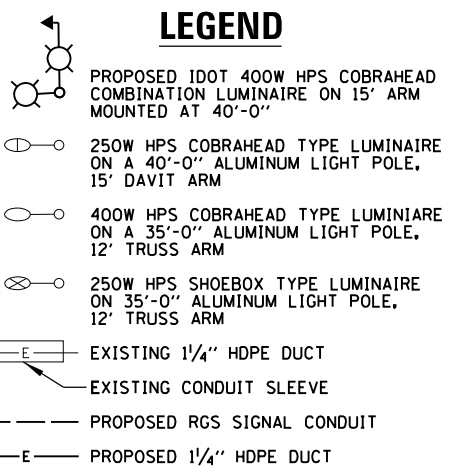
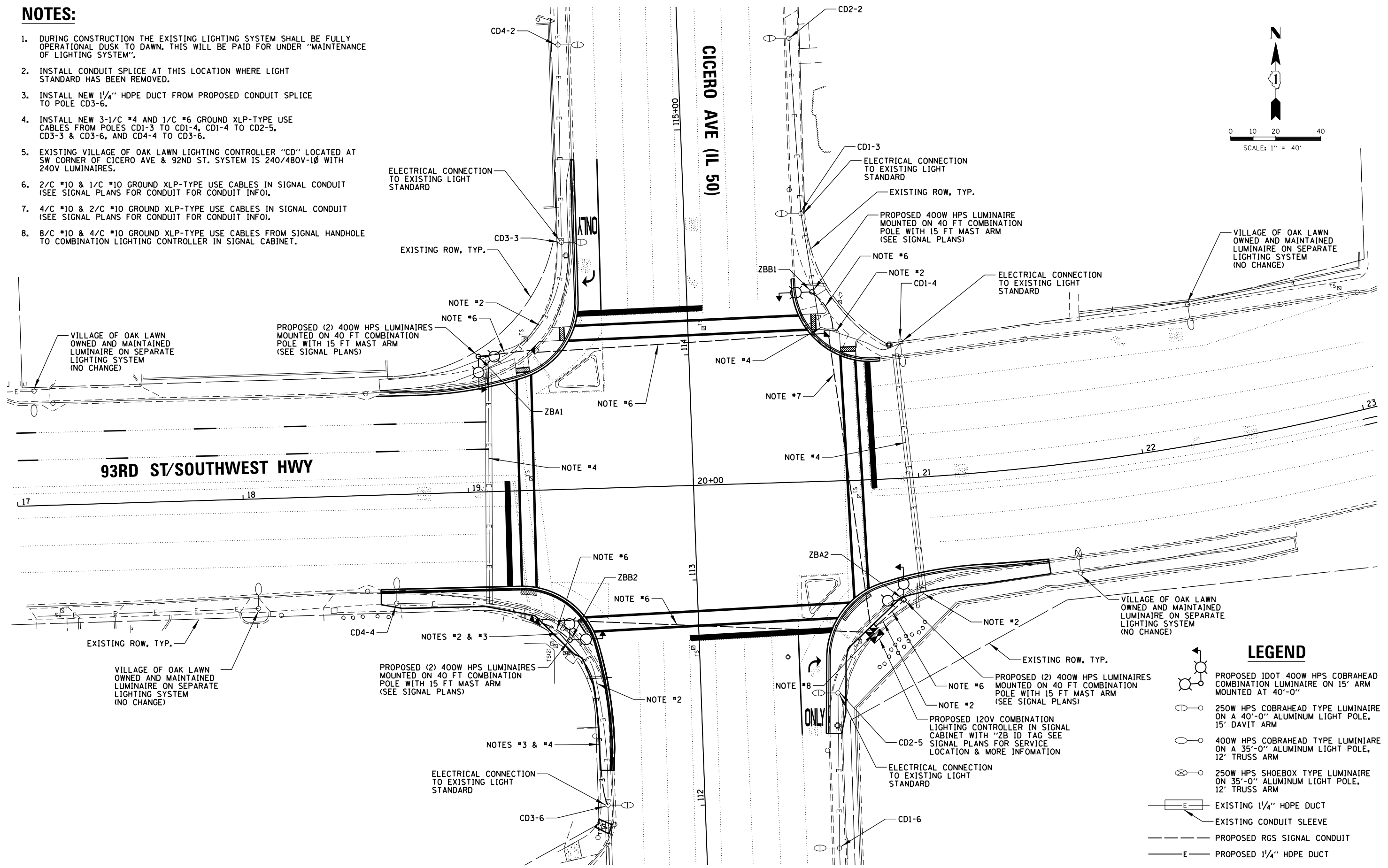
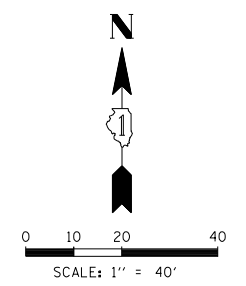


NOTES:

1. DURING CONSTRUCTION THE EXISTING LIGHTING SYSTEM SHALL BE FULLY OPERATIONAL DUSK TO DAWN. THIS WILL BE PAID FOR UNDER "MAINTENANCE OF LIGHTING SYSTEM".
2. INSTALL CONDUIT SPLICE AT THIS LOCATION WHERE LIGHT STANDARD HAS BEEN REMOVED.
3. INSTALL NEW 1/4" HDPE DUCT FROM PROPOSED CONDUIT SPLICE TO POLE CD3-6.
4. INSTALL NEW 3-1/2" #4 AND 1/2" #6 GROUND XLP-TYPE USE CABLES FROM POLES CD1-3 TO CD1-4, CD1-4 TO CD2-5, CD3-3 & CD3-6, AND CD4-4 TO CD3-6.
5. EXISTING VILLAGE OF OAK LAWN LIGHTING CONTROLLER "CD" LOCATED AT SW CORNER OF CICERO AVE & 92ND ST. SYSTEM IS 240/480V-1Ø WITH 240V LUMINAIRES.
6. 2/C #10 & 1/C #10 GROUND XLP-TYPE USE CABLES IN SIGNAL CONDUIT (SEE SIGNAL PLANS FOR CONDUIT FOR CONDUIT INFO).
7. 4/C #10 & 2/C #10 GROUND XLP-TYPE USE CABLES IN SIGNAL CONDUIT (SEE SIGNAL PLANS FOR CONDUIT FOR CONDUIT INFO).
8. 8/C #10 & 4/C #10 GROUND XLP-TYPE USE CABLES FROM SIGNAL HANDHOLE TO COMBINATION LIGHTING CONTROLLER IN SIGNAL CABINET.



DATE	BY	DATE	BY
DATE	BY	DATE	BY

CHRISTOPHER B. BURKE
ENGINEERING LTD.
9575 West Higgins Road, Suite 600
Rosemont, Illinois 60018
(647) 623-5930

FILE NAME =	USER NAME = fbariso	DESIGNED - GAH	REVISED -	STATE OF ILLINOIS DEPARTMENT OF TRANSPORTATION	PROPOSED ROADWAY LIGHTING MODIFICATION PLAN	F.A.P. RT. =	SECTION	COUNTY	TOTAL SHEETS	SHEET NO.	
N:\Idot\130116\Work Order 13018 - IL505W	Wj\Mech\LTG_130116_01.SHT	DRAWN - LRR	REVISED -			350	461TS-2(13)	COOK	42	17	
	PLOT SCALE = 48"	CHECKED - AJD	REVISED -			CONTRACT NO. 60X25					
	PLOT DATE = 1/22/2014	DATE -	REVISED -			FED. ROAD DIST. NO. ILLINOIS FED. AID PROJECT					