

STATE OF ILLINOIS  
DEPARTMENT OF TRANSPORTATION  
DIVISION OF HIGHWAYS

F.A.P. RTE.	SECTION	COUNTY	TOTAL SHEETS	SHEET NO.
337	20LS-6	LAKE	12	1
ILLINOIS CONTRACT NO. 60W83				

D-91-382-13

FOR INDEX OF SHEETS, SEE SHEET NO. 2

**TRAFFIC DATA**

IL 22 (HALF DAY ROAD): 33,700 (2011) ADT

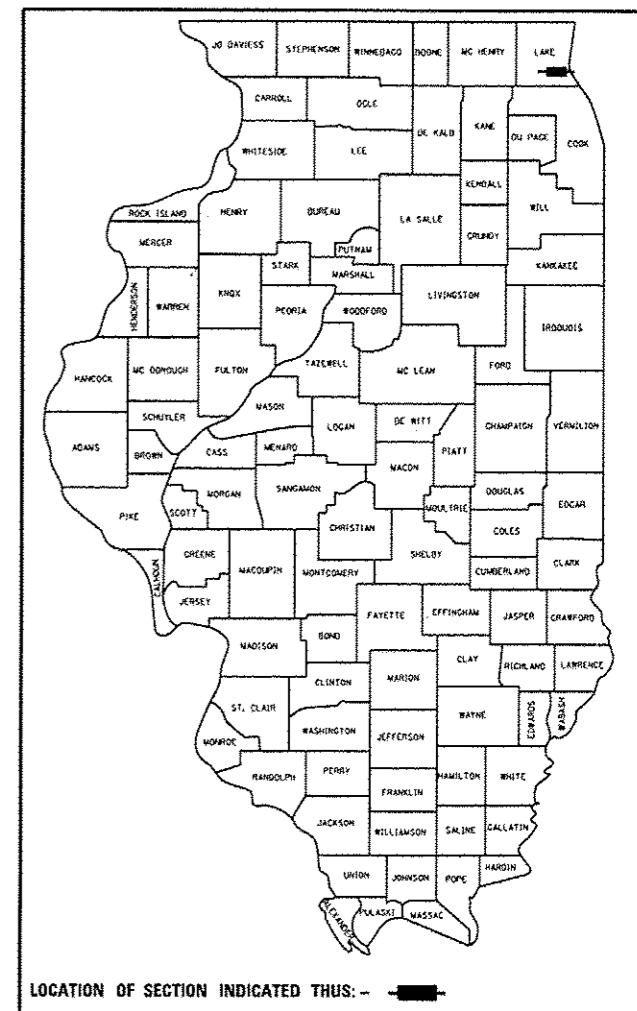
POSTED SPEED: 35 MPH

**PROPOSED  
HIGHWAY PLANS**

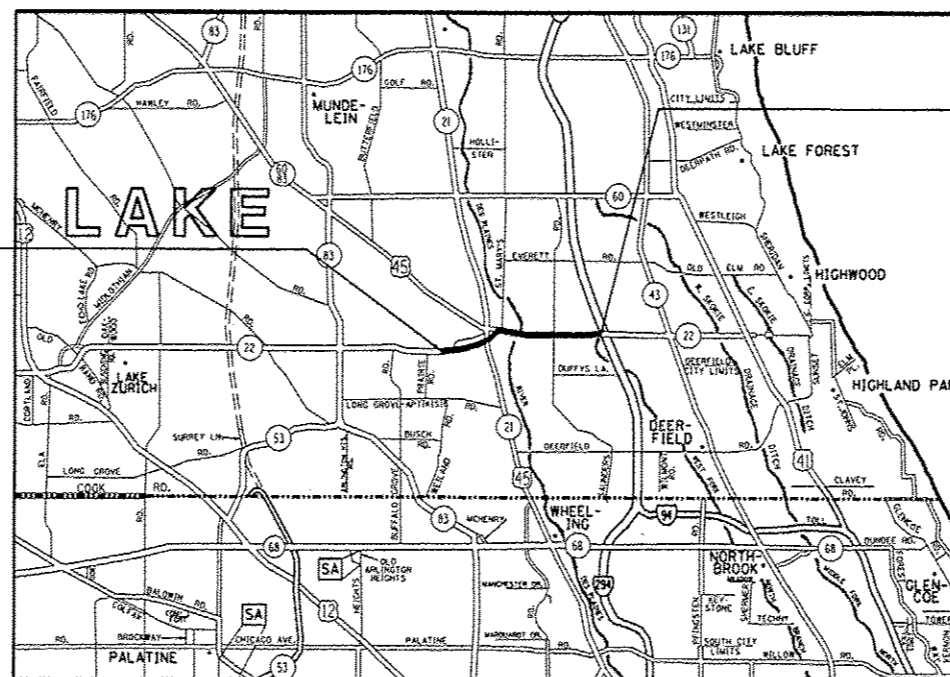
F.A.P. ROUTE <sup>337</sup> ILL 22 (HALF DAY ROAD)  
FROM ILL 21 /US 45 (MILWAUKEE AVE.) TO I-94  
SECTION 20LS-6  
LANDSCAPING  
LAKE COUNTY

C-91-382-13

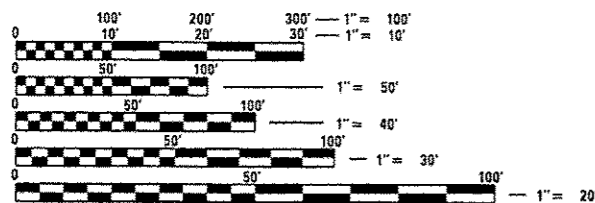
IMPROVEMENT LOCATED IN THE  
VILLAGE OF LINCOLNSHIRE



IMPROVEMENT BEGINS  
STA. 225 + 00



IMPROVEMENT ENDS  
STA. 380 + 00



FULL SIZE PLANS HAVE BEEN PREPARED USING STANDARD ENGINEERING SCALES. REDUCED SIZED PLANS WILL NOT CONFORM TO STANDARD SCALES. IN MAKING MEASUREMENTS ON REDUCED PLANS, THE ABOVE SCALES MAY BE USED.

J.U.L.I.E.  
JOINT UTILITY LOCATION INFORMATION FOR EXCAVATION  
1-800-892-0123  
OR 811

PROJECT DESIGNER: MELISSA DEL ROSARIO (847)705-4391  
PROJECT MANAGER: RICHARD WANNER (847) 705-4172

GROSS LENGTH = 15,312 FT. = 2.9 MILE  
NET LENGTH = 15,312 FT. = 2.9 MILE

CONTRACT NO. 60W83

STATE OF ILLINOIS  
DEPARTMENT OF TRANSPORTATION  
DIVISION OF HIGHWAYS

SUBMITTED *November 20 13*

*John F. ...*  
DEPUTY DIRECTOR OF HIGHWAYS, REGION ENGINEER

*Jan 24 20 14*  
*John D. Baranzelli, PE*  
ENGINEER OF DESIGN AND ENVIRONMENT

*Jan 24 20 14*  
*Omer Osman, PE*  
DIRECTOR OF HIGHWAYS, CHIEF ENGINEER

PRINTED BY THE AUTHORITY  
OF THE STATE OF ILLINOIS

**INDEX OF SHEETS**

SHEET NO.	DESCRIPTION
1	COVER SHEET
2	INDEX OF SHEETS, GENERAL NOTES, & STATE STANDARDS
3-4	SUMMARY OF QUANTITIES
5	SCHEDULE OF QUANTITIES
6-11	LANDSCAPING PLANS
12	DISTRICT DETAILS

**DISTRICT DETAILS**

TC-10  
TC-22

**HIGHWAY STANDARDS**

701011-04 OFF-RD MOVING OPERATIONS, 2L, 2W, DAY ONLY  
 701501-06 URBAN LANE, CLOSURE, 2L, 2W, UNDIVIDED  
 701601-09 URBAN LANE CLOSURE, MULTILANE, 1W OR 2W WITH NON TRAVERSABLE MEDIAN  
 701701-09 URBAN LANE CLOSURE, MULTILANE INTERSECTION  
 701801-05 SIDEWALK, CORNER OR CROSSWALK CLOSURE  
 701901-03 TRAFFIC CONTROL DEVICES  
 701101-04

**GENERAL NOTES**

- BEFORE STARTING ANY EXCAVATION, THE CONTRACTOR SHALL CALL "JULIE" AT 800-892-0123 FOR FIELD LOCATIONS OF BURIED ELECTRICAL, TELEPHONE, AND GAS FACILITIES. (48 HOUR NOTIFICATION IS REQUIRED).
- THE CONTRACTOR WILL NOT BE ALLOWED TO SET UP A YARD OR FIELD OFFICE ON STATE PROPERTY WITHOUT WRITTEN PERMISSION FROM I.D.OT. OR VILLAGE OF LINCOLNSHIRE.
- WHENEVER, DURING CONSTRUCTION OPERATIONS, ANY LOOSE MATERIAL IS DEPOSITED IN THE FLOW LINE OF DRAINAGE STRUCTURES SUCH THAT THE NATURAL FLOW OF WATER IS OBSTRUCTED, IT SHALL BE REMOVED AT THE CLOSE OF EACH WORKING DAY. AT THE CONCLUSION OF CONSTRUCTION OPERATIONS, ALL UTILITY STRUCTURES SHALL BE FREE FROM DIRT AND DEBRIS. THE WORK SPECIFIED ABOVE WILL NOT BE PAID BUT SHALL BE INCLUDED IN THE COST OF THE LANDSCAPE PAY ITEMS.
- ANY WORK WITHIN A LANDSCAPED MEDIAN REQUIRES A LANE CLOSURE AND USE OF AN ARROW BOARD PER IDOT SPECIFICATIONS.
- DO NOT SCALE PLANS FOR CONSTRUCTION DIMENSIONS.
- IT IS THE CONTRACTOR'S RESPONSIBILITY TO ASCERTAIN EXISTING FIELD CONDITIONS BEFORE BIDDING ON THIS CONTRACT.
- THE CONTRACTOR SHALL TAKE ALL NECESSARY PRECAUTIONS FOR THE PROTECTION OF EXISTING PLANT MATERIAL FOR WHICH THE CONTRACT DOES NOT PROVIDE REMOVAL. THE PROTECTION OF EXISTING PLANT MATERIAL AND THE REPAIR OR REPLACEMENT OF EXISTING PLANT MATERIAL DAMAGED BY THE CONTRACTOR SHALL BE DONE IN ACCORDANCE WITH THE REQUIREMENTS OF SECTION 201 OF THE STANDARD SPECIFICATIONS.
- THE CONTRACTOR SHALL CONTACT THE DISTRICT ONE TRAFFIC CONTROL SUPERVISOR AT (847) 705-4470 A MINIMUM OF 72 HOURS IN ADVANCE OF BEGINNING WORK.
- ARTERIAL LANE CLOSURES WILL ONLY BE PERMITTED DURING THE OFF-PEAK TRAFFIC VOLUME HOURS. PEAK TRAFFIC VOLUME HOURS ARE DEFINED AS WEEK-DAYS (MONDAY THROUGH FRIDAY) FROM 7:00 AM TO 9:00 AM AND 4:00 PM TO 6:00 PM. NO OVERNIGHT LANE CLOSURES WILL BE PERMITTED.

*Rev.*

FILE NAME *	USER NAME * delrosarios	DESIGNED -	REVISED -	<b>STATE OF ILLINOIS DEPARTMENT OF TRANSPORTATION</b>	<b>INDEX OF SHEETS, GENERAL NOTES, &amp; STATE STANDARDS</b>	F.A.P. RTE.	SECTION	COUNTY	TOTAL SHEETS	SHEET NO.	
c:\p_wor\p_wor\delrosarios\2354989	M38213-Ind4sp.dgn	DRAWN -	REVISED -			337	20LS-6	LAKE	12	2	
Default	PLOT SCALE * 1/32000' = 1" = 320'	CHECKED -	REVISED -			CONTRACT NO. 60W83					
	PLOT DATE * 1/3/2014	DATE -	REVISED -			ILLINOIS FED. AID PROJECT					

SUMMARY OF QUANTITIES			CONSTRUCTION TYPE CODE				
CODE NO	ITEM	UNIT	100% STATE TOTAL QUANTITIES	0031			
A2005956	TREE, PLATANUS X ACERIFOLIA MORTON CIRCLE (EXCLAMATION LONDON PLANETREE), 2" CALIPER, TREE FORM, BALLED AND BURLAPPED	EACH	7	7			
A2028220	TREE, TILIA CORDATA HALKA (SUMMER SPRITE DWARF LITTLELEAF LINDEN), 2 1/2" CALIPER, BALLED AND BURLAPPED	EACH	12	12			
20100110	TREE REMOVAL (6 TO 15 UNITS DIAMETER)	UNIT	170	170			
20100210	TREE REMOVAL (OVER 15 UNITS DIAMETER)	UNIT	50	50			
20101300	TREE PRUNING (1 TO 10 INCH DIAMETER)	EACH	36	36			
20101350	TREE PRUNING (OVER 10 INCH DIAMETER)	EACH	2	2			
67100100	MOBILIZATION	L SUM	1	1			
A2000316	TREE, ACER MIYABEI MORTON (STATE STREET MIYABEI MAPLE), 2" CALIPER, BALLED AND BURLAPPED	EACH	13	13			
A2001216	TREE, ACER RUBRUM RED SUNSET (RED SUNSET RED MAPLE), 2" CALIPER, BALLED AND BURLAPPED	EACH	8	8			
A2001612	TREE, ACER SACCHARINUM MORTON (CRESCENDO SUGAR MAPLE), 2" CALIPER, BALLED AND BURLAPPED	EACH	10	10			

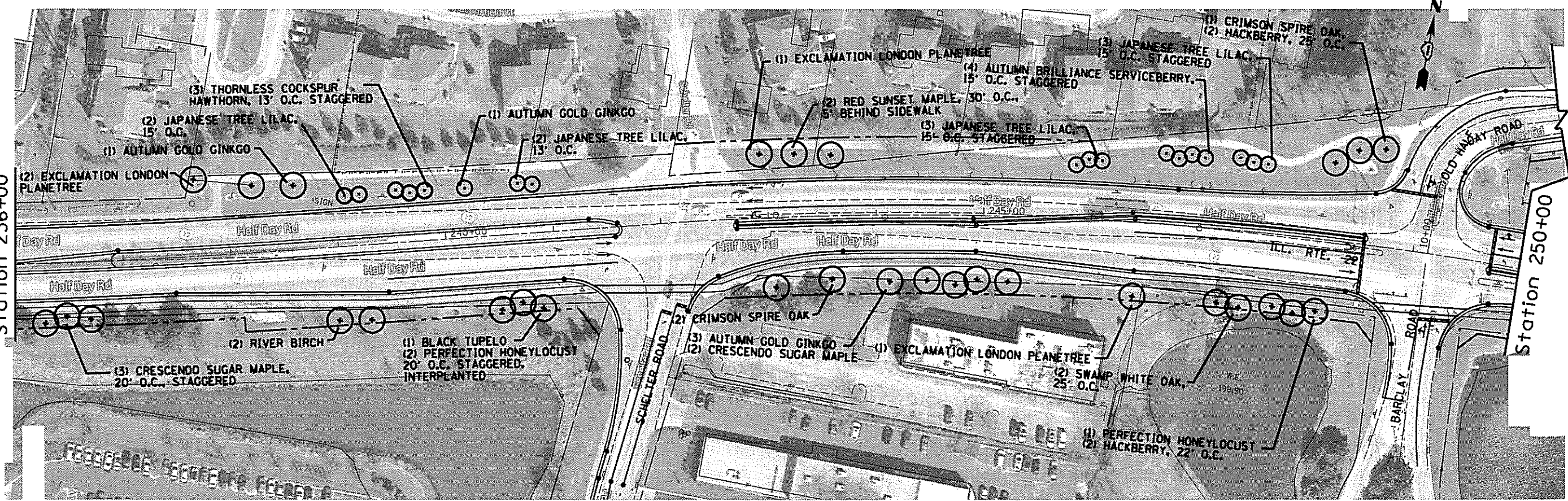
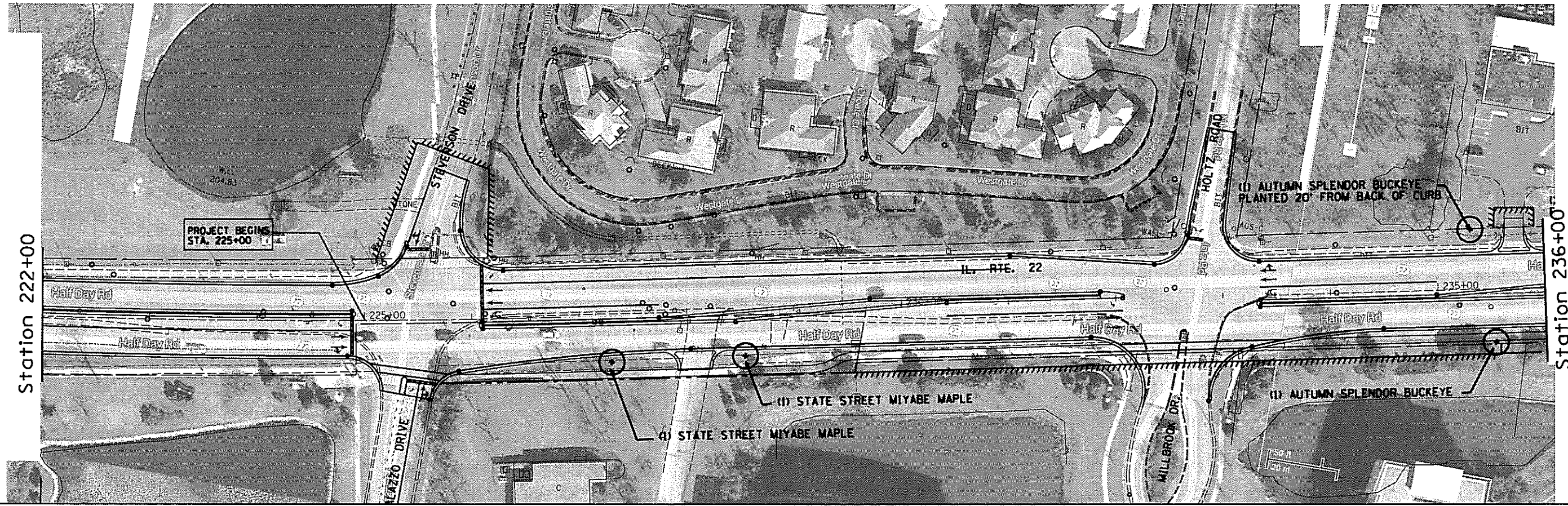
SUMMARY OF QUANTITIES			CONSTRUCTION TYPE CODE				
CODE NO	ITEM	UNIT	100% STATE TOTAL QUANTITIES	0031			
A2002370	TREE, BETULA NIGRA (RIVER BIRCH), 8' HEIGHT, CLUMP FORM, BALLED AND BURLAPPED	EACH	2	2			
A2002564	TREE, CARPINUS CAROLINIANA (AMERICAN HORNBEAM), 5' HEIGHT, SHRUB FORM, BALLED AND BURLAPPED	EACH	11	11			
A2002916	TREE, CELTIS OCCIDENTALIS (COMMON HACKBERRY), 2" CALIPER, BALLED AND BURLAPPED	EACH	16	16			
A2004512	TREE, GINKGO BILOBA AUTUMN GOLD (AUTUMN GOLD GINKGO), 2" CALIPER, BALLED AND BURLAPPED	EACH	8	8			
A2004610	TREE, GLEDITSIA TRIACANTHOS INERMIS PERFECTION (PERFECTION THORNLESS HONEYLOCUST), 2" CALIPER, BALLED AND BURLAPPED	EACH	10	10			
A2005040	TREE, GYMNOCLADUS DIOICUS ESPRESSO-JFS (ESPRESSO KENTUCKY COFFEETREE), 2-1/2" CALIPER, BALLED AND BURLAPPED	EACH	20	20			
A2005516	TREE, NYSSA SYLVATICA (BLACK TUPELO), 2" CALIPER, BALLED AND BURLAPPED	EACH	6	6			
A2006516	TREE, QUERCUS BICOLOR (SWAMP WHITE OAK), 2" CALIPER, BALLED AND BURLAPPED	EACH	12	12			

URBAN

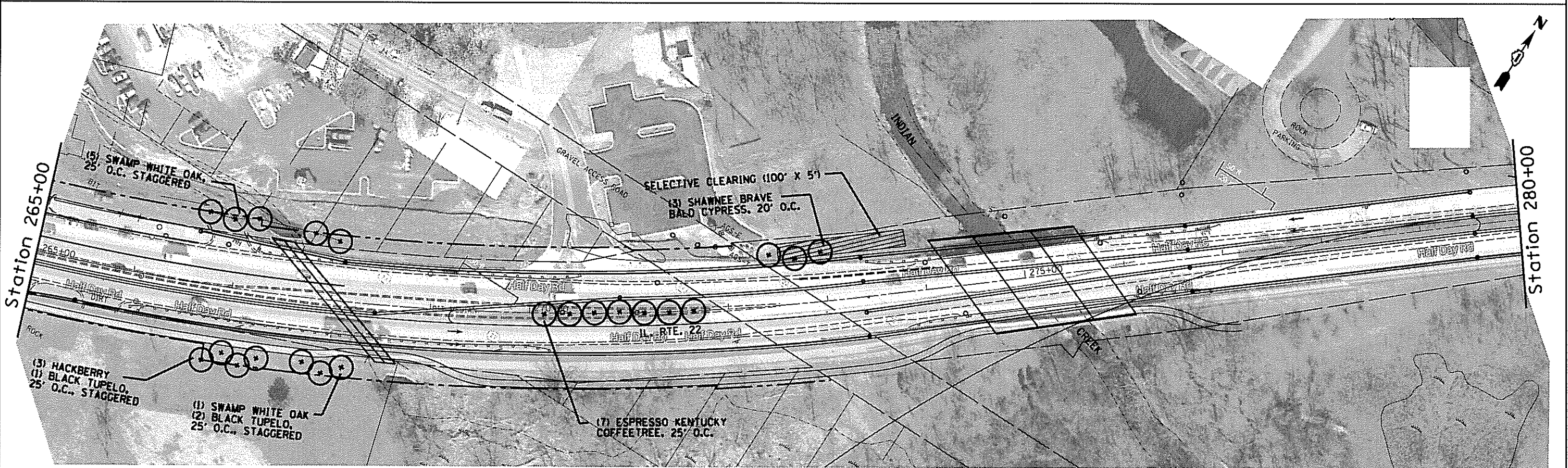
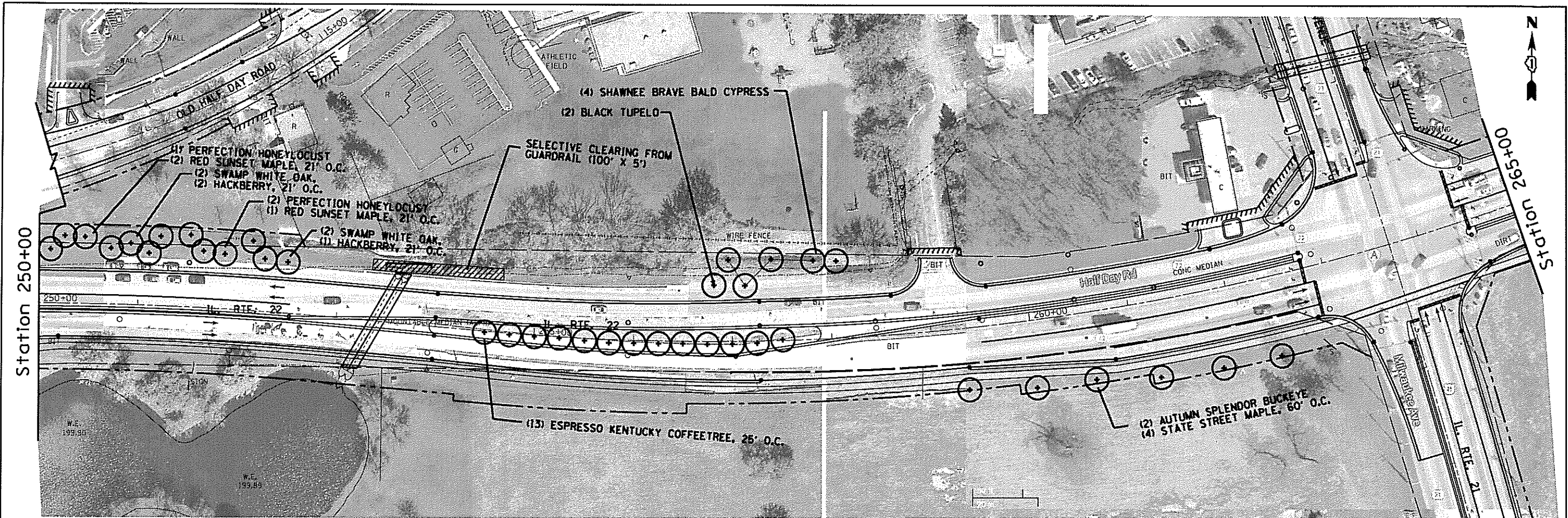
URBAN

SUMMARY OF QUANTITIES			CONSTRUCTION TYPE CODE							SUMMARY OF QUANTITIES			CONSTRUCTION TYPE CODE							
CODE NO	ITEM	UNIT	100% STATE TOTAL QUANTITIES	0031						CODE NO	ITEM	UNIT	100% STATE TOTAL QUANTITIES	0031						
A2007716	TREE, TAXODIUM DISTICHUM SHAWNEE BRAVE (SHAWNEE BRAVE BALD CYPRESS), 2" CALIPER, BALLED AND BURLAPPED	EACH	7	7						C2000436	SHRUB, ARONIA ARBUTIFOLIA BRILLIANT ISSIMA (BRILLANT RED CHOKEBERRY), 3' HEIGHT, BALLED AND BURLAPPED	EACH	150	150						
A2012116	TREE, AESCULUS X AUTUMN SPLENDOR (AUTUMN SPLENDOR BUCKEYE), 2" CALIPER, BALLED AND BURLAPPED	EACH	6	6						C2003336	SHRUB, HAMAMELIS VIRGINIANA (COMMON WITCHHAZEL), 3' HEIGHT, BALLED AND BURLAPPED	EACH	50	50						
A2064012	TREE, QUERCUS ALBA X ROBUR CRIMSCHMIDT (CRIMSON SPIRE OAK), 2-1/2" CALIPER, BALLED AND BURLAPPED	EACH	7	7						C2C015G5	SHRUB, CORYLUS AMERICANA (AMERICAN FILBERT), CONTAINER GROWN, 5-GALLON (3 FOOT HEIGHT - ROOT PRODUCTION METHOD), SPECIAL	EACH	100	100						
B2000766	TREE, AMELANCHIER X GRANDIFLORA AUTUMN BRILLIANCE (AUTUMN BRILLIANCE SERVICE BERRY), 6' HEIGHT, SHRUB FORM, BALLED AND BURLAPPED	EACH	4	4						C3006024	SHRUB, RHUS TYPHINA (STAGHORN SUMAC), 2' HEIGHT, BARE ROOT	EACH	280	280						
B2001668	TREE, CRATAEGUS CRUSGALLI INERMIS (THORN LESS COCKSPUR HAWTHORN), 7' HEIGHT, SHRUB FORM, BALLED AND BURLAPPED	EACH	20	20						K0029634	WEED CONTROL, PRE-EMERGENT GRANULAR HERBICIDE	POUND	25	25						
B2004566	TREE, MALUS RED JEWEL (RED JEWEL CRAB APPLE), 6' HEIGHT, CLUMP FORM, BALLED AND BURLAPPED	EACH	11	11						X2010310	TREE REMOVAL (SPECIAL)	UNIT	34	34						
B2006216	TREE, SYRINGA RETICULATA (JAPANESE TREE LILAC), 2" CALIPER, TREE FORM, BALLED AND BURLAPPED	EACH	22	22						Z0064800	SELECTIVE CLEARING	UNIT	16	16						
										Z0030850	TEMPORARY INFORMATION SIGNING	SQ FT	25.70	25.70						

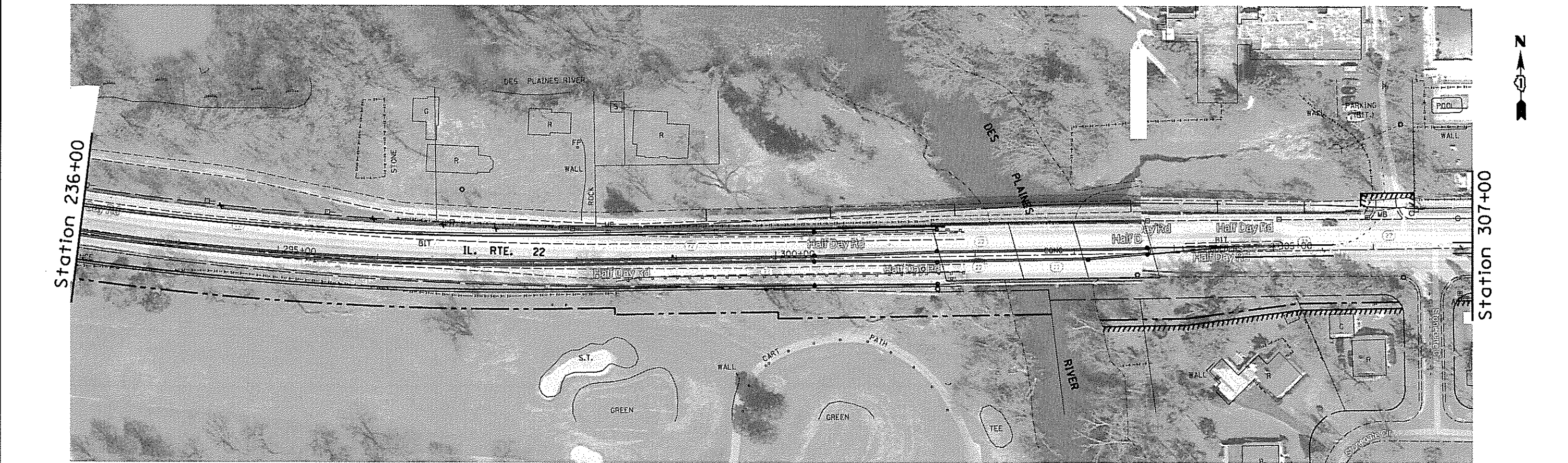
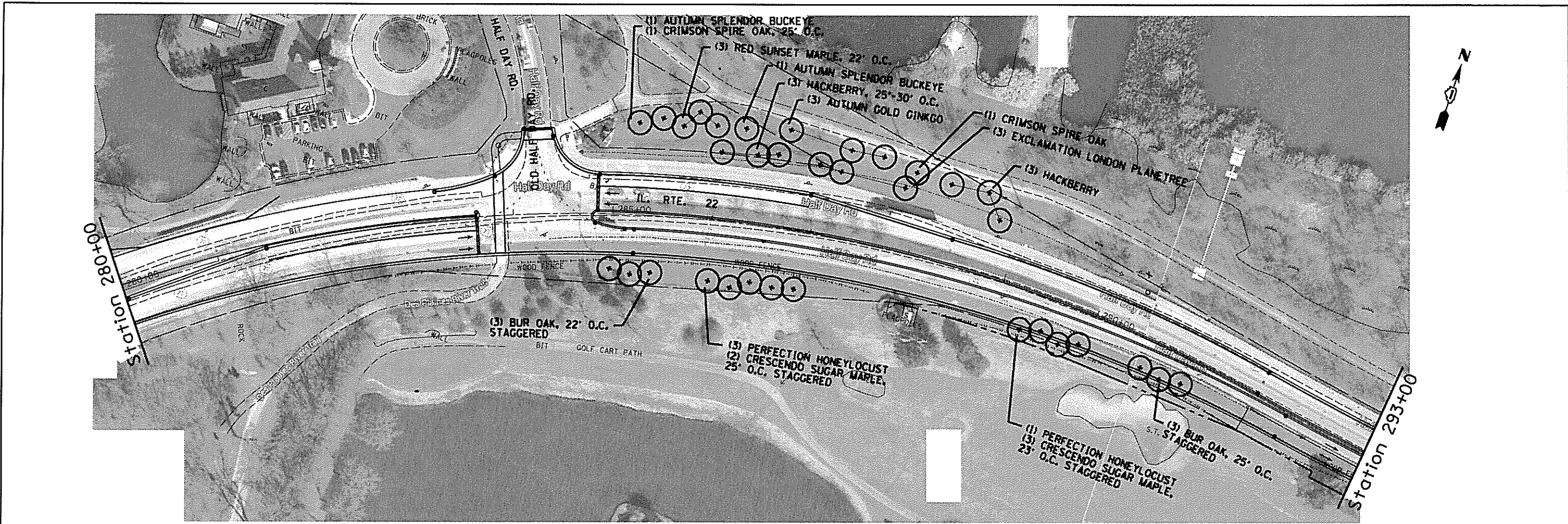
LOCATION	TREE REMOVAL (6 TO 15 UNITS)	TREE REMOVAL (OVER 15 UNITS)	TREE PRUNING (1 TO 10 INCH)	TREE PRUNING (OVER 10 INCH)	TREE REMOVAL (SPECIAL)	SELECTIVE CLEARING
STA. 253+30 TO STA. 254+00 LT						0.5
STA. 272+50 TO STA. 273+85 LT						0.5
STA. 312+95 TO STA. 313+30 LT						0.08
STA. 320+90 RT			20			
STA. 322+15 TO STA. 322+50 RT	41.1	32.1				
STA. 324+50 RT					5.8	
STA. 326+38 RT			16			
STA. 327+00 RT	12.2					
STA. 339+10 TO STA. 347+20 LT						13.6
STA. 353+40 TO STA. 353+75 RT	30.9					
STA. 355+50 TO STA. 355+75 RT	15.5				14.9	
STA. 357+00 RT					5	
STA. 357+12 RT					3.3	
STA. 358+85 RT	10					
STA. 359+75 TO STA. 360+60 LT						1.2
STA. 361+25 TO STA. 361+60 LT						0.2
STA. 362+30 TO STA. 362+85 RT	38.6				4.1	
<b>TOTALS</b>	148.3	32.1	36		33.1	16.08



FILE NAME =	USER NAME = dslrosertoms	DESIGNED -	REVISED -	<b>STATE OF ILLINOIS DEPARTMENT OF TRANSPORTATION</b>	<b>ILL 22 LANDSCAPING PLAN</b>	F.A.P. RTE.	SECTION	COUNTY	TOTAL SHEETS	SHEET NO.	
c:\pwwork\pwwork\delrosertoms\102354909	M138213-Indsep.dgn	DRAWN -	REVISED -			337	20LS-6	LAKE	12	6	
Default	PLOT SCALE = 1/8" = 1' / in.	CHECKED -	REVISED -			SCALE: SHEET OF SHEETS STA. 222+00 TO STA. 250+00					
	PLOT DATE = 11/21/2013	DATE -	REVISED -			CONTRACT NO. 60W83 ILLINOIS FED. AID PROJECT					

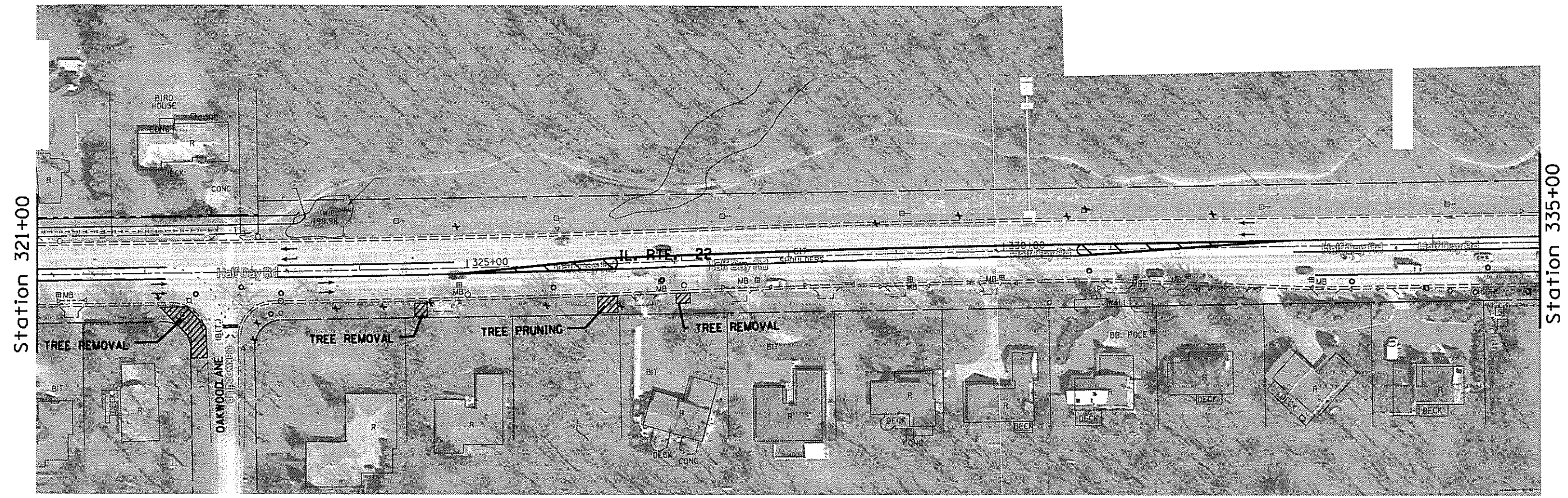
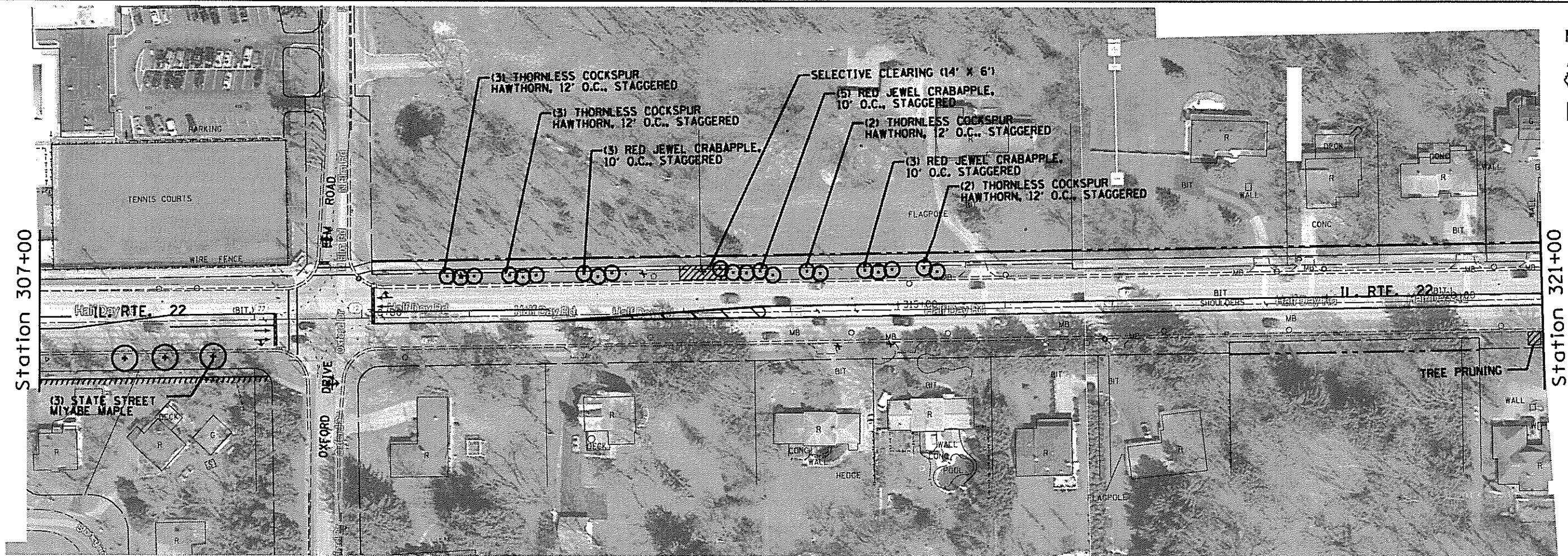


FILE NAME =	USER NAME = del-osoriona	DESIGNED -	REVISED -	STATE OF ILLINOIS DEPARTMENT OF TRANSPORTATION	ILL 22 LANDSCAPING PLAN			F.A.P. RTE.	SECTION	COUNTY	TOTAL SHEETS	SHEET NO.			
ci:\pwwork\pwwork\del-osoriona\10354929	M138213-indsca.dgn	DRAWN -	REVISED -		SCALE:	SHEET	OF	SHEETS	STA. 250+00	TO STA. 280+00	337	20LS-6	LAKE	12	7
Default	PLT SCALE = 1/8" = 1'-0"	CHECKED -	REVISED -											CONTRACT NO. 60W83	
	PLT DATE = 11/21/2013	DATE -	REVISED -											ILLINOIS FED. AID PROJECT	



FILE NAME =	USER NAME = dalrosarions	DESIGNED -	REVISED -	<b>STATE OF ILLINOIS DEPARTMENT OF TRANSPORTATION</b>	<b>ILL 22 LANDSCAPING PLAN</b>			F.A.P. RTE. =	SECTION	COUNTY	TOTAL SHEETS	SHEET NO.
c:\pwwork\pdx\dalrosarions\142354929	1138213-1ndssp.dgn	DRAWN -	REVISED -		337	20LS-6	LAKE	12	8			
Default	PLOT SCALE = 102.2075' / 1"	CHECKED -	REVISED -		SCALE: SHEET OF SHEETS STA. 280+00 TO STA. 307+00			CONTRACT NO. 60W83				
	PLOT DATE = 11/21/2013	DATE -	REVISED -		ILLINOIS FED. AID PROJECT							

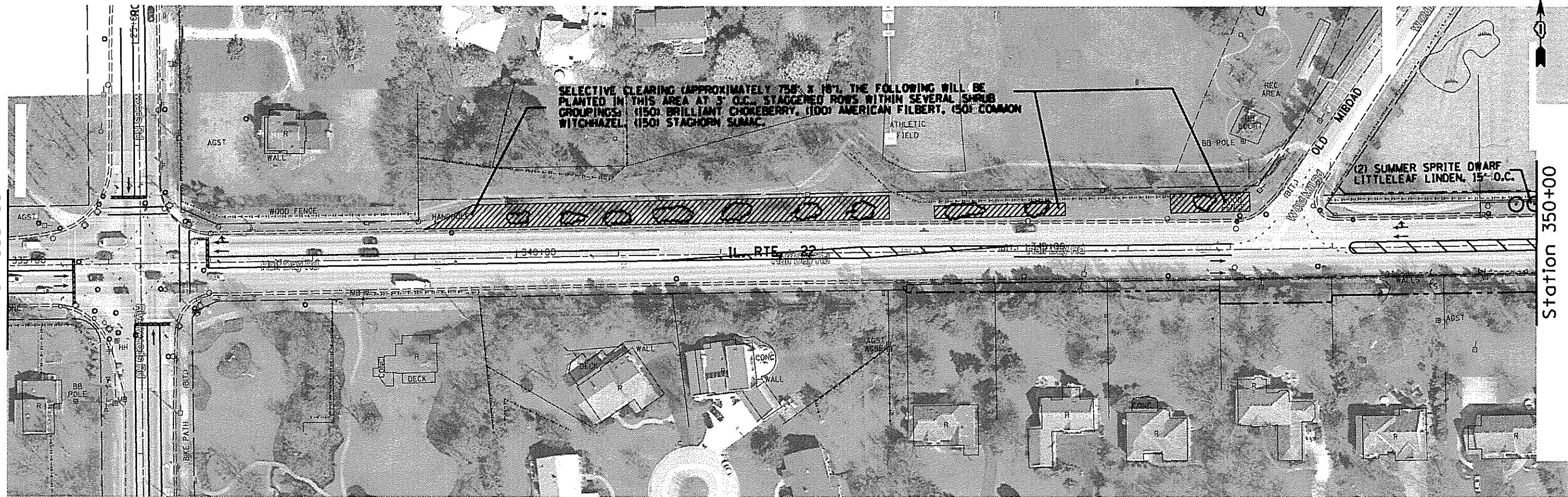




FILE NAME =	USER NAME = delrosarions	DESIGNED -	REVISED -	<b>STATE OF ILLINOIS DEPARTMENT OF TRANSPORTATION</b>	<b>ILL 22 LANDSCAPING PLAN</b>	F.A.P. RTE.	SECTION	COUNTY	TOTAL SHEETS	SHEET NO.	
c:\pwwork\pwwork\delrosarions\0354989	MI38213-1ndscap.dgn	DRAWN -	REVISED -			337	20LS-6	LAKE	12	9	
Default	PLOT SCALE = 1/8"=1'-0"	CHECKED -	REVISED -			SCALE: SHEET OF SHEETS STA. 307+00 TO STA. 335+00		CONTRACT NO. 60WB3			
	PLOT DATE = 11/21/2013	DATE -	REVISED -			ILLINOIS FED. AID PROJECT					

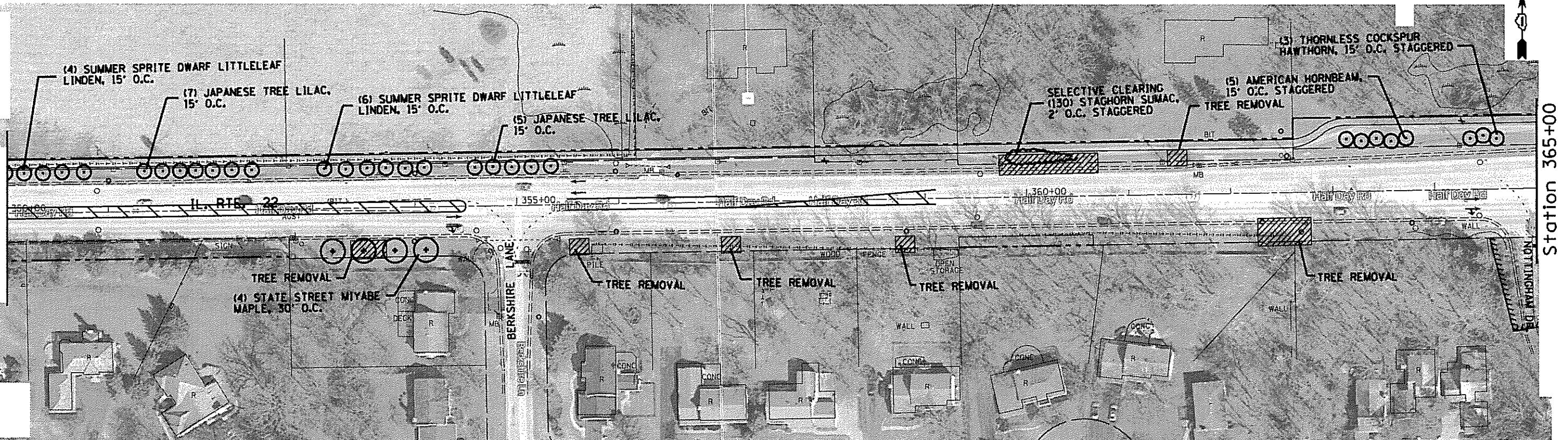
Station 335+00

Station 350+00

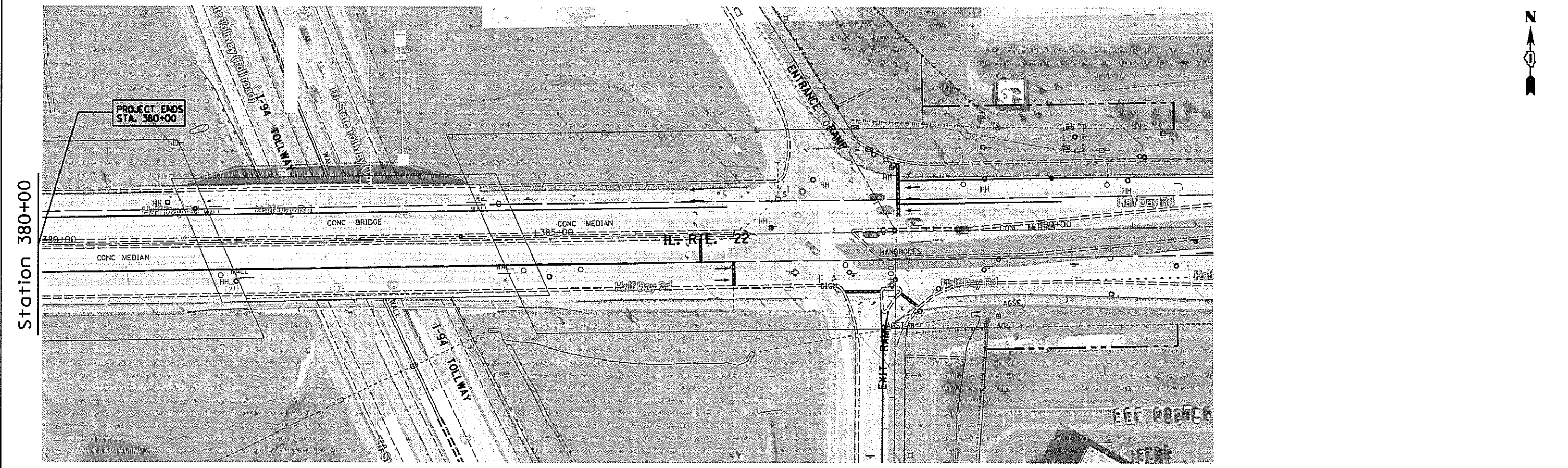
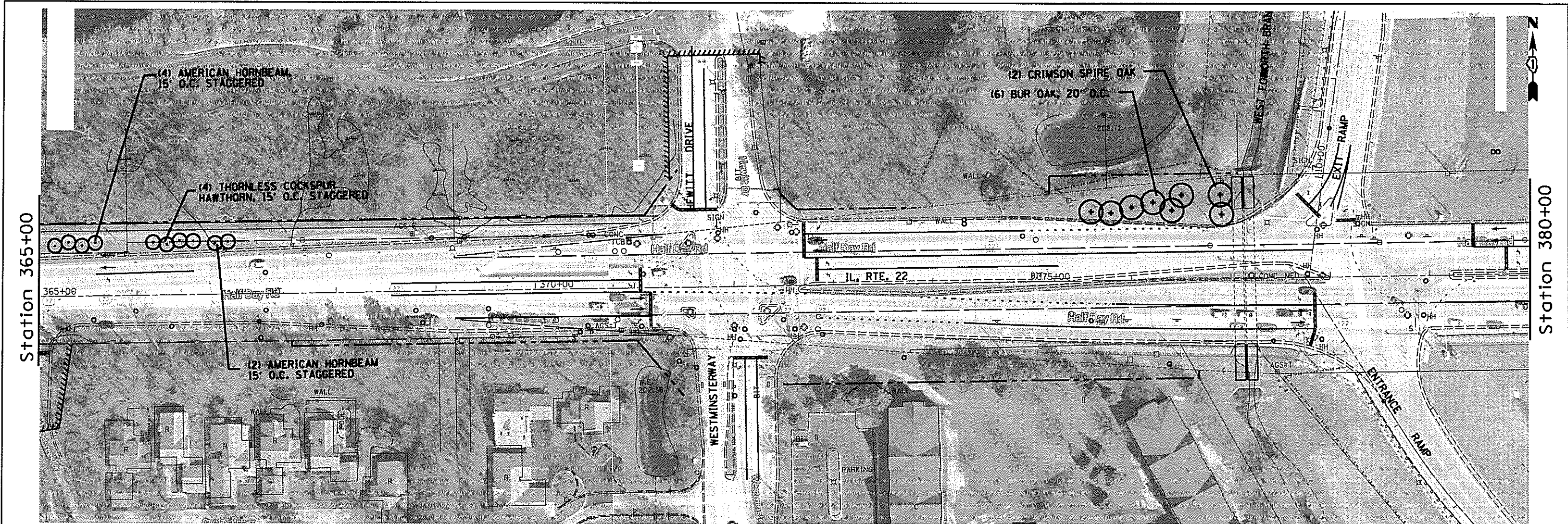


Station 350+00

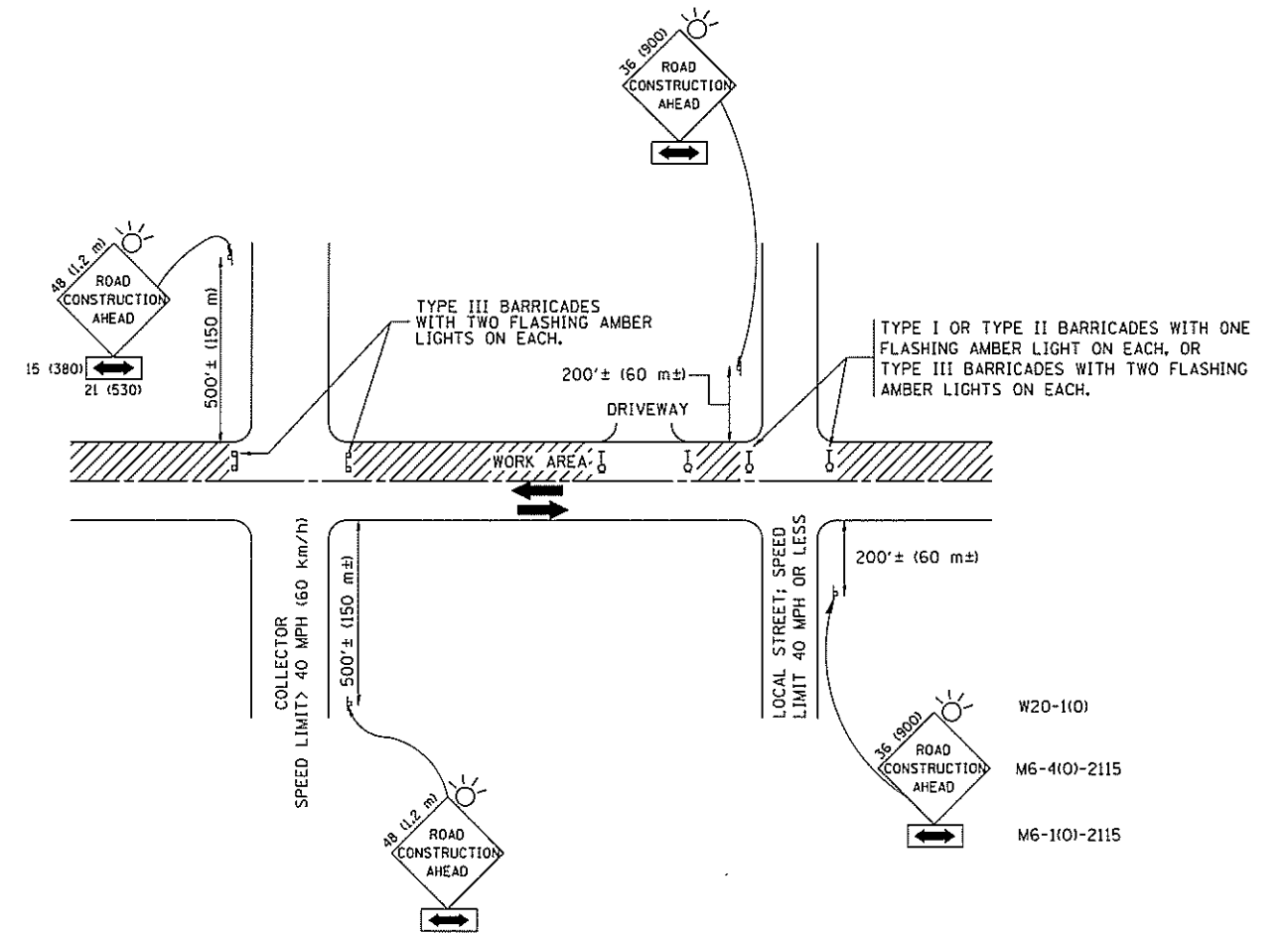
Station 365+00



FILE NAME =	USER NAME = dal-osarisma	DESIGNED -	REVISED -	<b>STATE OF ILLINOIS DEPARTMENT OF TRANSPORTATION</b>	<b>ILL 22 LANDSCAPING PLAN</b>	F.A.P. RTE.	SECTION	COUNTY	TOTAL SHEETS	SHEET NO.	
at:\pwwork\pwwork\dal-osarisma\0354989	M138213-Inscep.dgn	DRAWN -	REVISED -			337	20LS-6	LAKE	12	10	
PLOT SCALE = 1/80.0188" = 1'		CHECKED -	REVISED -			CONTRACT NO. 60W83					
Default	PLOT DATE = 11/21/2013	DATE -	REVISED -			ILLINOIS FED. AID PROJECT					
				SCALE:		SHEET OF SHEETS STA. 335+00 TO STA. 365+00					



FILE NAME =	USER NAME = delrose-ians	DESIGNED -	REVISED -	<b>STATE OF ILLINOIS DEPARTMENT OF TRANSPORTATION</b>	<b>ILL 22 LANDSCAPING PLAN</b>			F.A.P. RTE.	SECTION	COUNTY	TOTAL SHEETS	SHEET NO.	
e:\work\work\delrose-ians\08354909	MI38213-landscap.dgn	DRAWN -	REVISED -					337	20LS-6	LAKE	12	II	
Default:	PLOT SCALE = 1/28.2833' / 1"	CHECKED -	REVISED -					SCALE: SHEET OF SHEETS STA. 365+00 TO STA. 380+00			CONTRACT NO. 60W83		
	PLOT DATE = 11/21/2013	DATE -	REVISED -								ILLINOIS FED. AID PROJECT		



TRAFFIC CONTROL AND PROTECTION FOR SIDE ROADS, INTERSECTIONS, AND DRIVEWAYS

NOTES:

A. FOR NO LANE RESTRICTION ON THE SIDE ROAD OR DRIVEWAYS

1. SIDE ROAD WITH A SPEED LIMIT OF 40 MPH (60 km/h) OR LESS AS SHOWN ON THE DRAWING AND AS DIRECTED BY THE ENGINEER:

a) ONE ROAD CONSTRUCTION AHEAD SIGN 36 x 36 (900x900) WITH A FLASHER AND FLAG MOUNTED ON IT APPROXIMATELY 200' (60 m) IN ADVANCE OF THE MAIN ROUTE.

b) THE CLOSED PORTION OF THE MAIN ROUTE SHALL BE PROTECTED BY BLOCKING WITH TYPE I, TYPE II OR TYPE III BARRICADES, 1/3 OF THE CROSS SECTION OF THE CLOSED PORTION.

2. SIDE ROAD WITH A SPEED LIMIT GREATER THAN 40 MPH (60 km/h) AS SHOWN ON THE DRAWING AND AS DIRECTED BY THE ENGINEER:

a) ONE ROAD CONSTRUCTION AHEAD SIGN 48 x 48 (1.2 m x 1.2 m) WITH A FLASHER MOUNTED ON IT APPROXIMATELY 500' (150 m) IN ADVANCE OF THE MAIN ROUTE.

b) THE CLOSED PORTION OF THE MAIN ROUTE SHALL BE PROTECTED BY BLOCKING WITH TYPE III BARRICADES, 1/2 OF THE CROSS SECTION OF THE CLOSED PORTION.

3. WHEN THE SIDE ROAD LIES BETWEEN THE BEGINNING OF THE MAINLINE SIGNING AND THE WORK ZONE, A SINGLE HEADED ARROW (M6-1) SHALL BE USED IN LIEU OF THE DOUBLE HEADED ARROW (M6-4).

B. FOR A LANE CLOSURE ON A SIDE ROAD OR DRIVEWAY:

USE APPLICABLE PORTIONS OF THE TYPICAL APPLICATION OF TRAFFIC CONTROL DEVICES (STD. 701501, STD. 701606 OR THE APPROPRIATE STANDARD). THE SPACING OF SIGNS AND BARRICADES SHALL BE ADJUSTED FOR FIELD CONDITIONS AS DIRECTED BY THE ENGINEER. THE DIRECTIONAL ARROW SHALL BE COVERED OR REMOVED WHEN NO LONGER CONSISTENT WITH THE SIDE ROAD LANE CLOSURE.

C. ADVANCE WARNING SIGNS ARE TO BE OMITTED ON DRIVEWAY UNLESS OTHERWISE NOTED.

D. THE TRAFFIC CONTROL AND PROTECTION FOR SIDE ROADS, INTERSECTIONS, AND DRIVEWAYS SHALL BE INCIDENTAL TO THE COST OF SPECIFIED TRAFFIC CONTROL STANDARDS OR ITEMS.

All dimensions are in millimeters (inches) unless otherwise shown.

FILE NAME = M:\dist\std\22x34\1010.dgn	USER NAME = gaglienobt	DESIGNED - LHA	REVISED - J. OBERLE 10-18-95
		DRAWN - -	REVISED - A. HOUSEH 03-06-96
	PLOT SCALE = 50.000 ' / IN.	CHECKED - -	REVISED - A. HOUSEH 10-15-96
	PLOT DATE = 1/4/2008	DATE - 06-89	REVISED - T. RAMMACHER 01-06-00

STATE OF ILLINOIS  
DEPARTMENT OF TRANSPORTATION

TRAFFIC CONTROL AND PROTECTION FOR  
SIDE ROADS, INTERSECTIONS, AND DRIVEWAYS

SCALE: NONE SHEET NO. 1 OF 1 SHEETS STA. TO STA.

F.A.P. RTE.	SECTION	COUNTY	TOTAL SHEETS	SHEET NO.
537	2025-6	LAKE	12	12
TC-10			CONTRACT NO.	
FED. ROAD DIST. NO. 1 ILLINOIS FED. AID PROJECT				