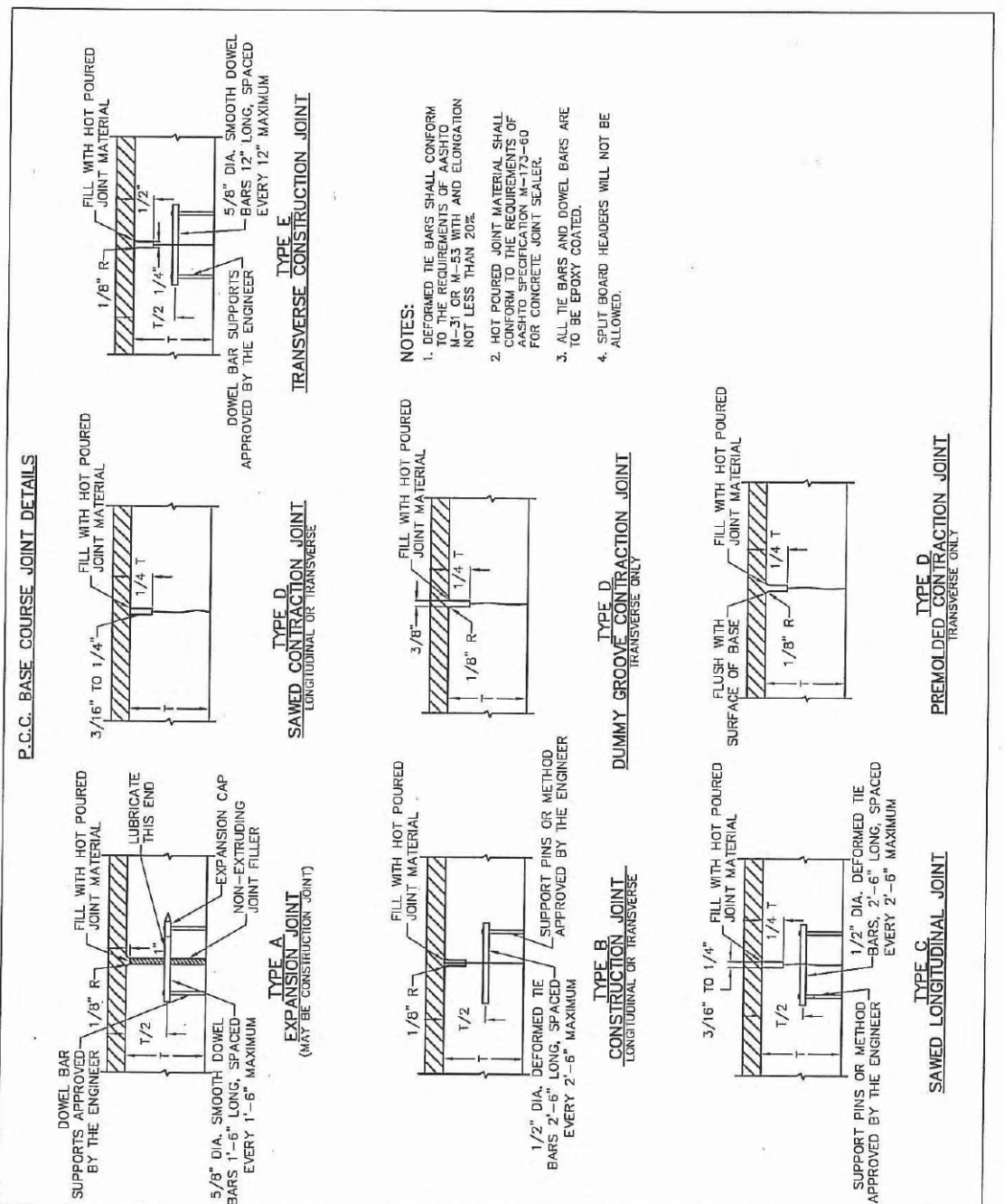


FILE PATH = p:\388035\pmt\ascomon\me\local\p\wec\000\Documents\01\_Americas\Transportation\602629938\_Circle\Phase\_1\000\_CD006\_Roadway\_Sheets\60W29\_Sht-CD01-DETAIL-02.dgn

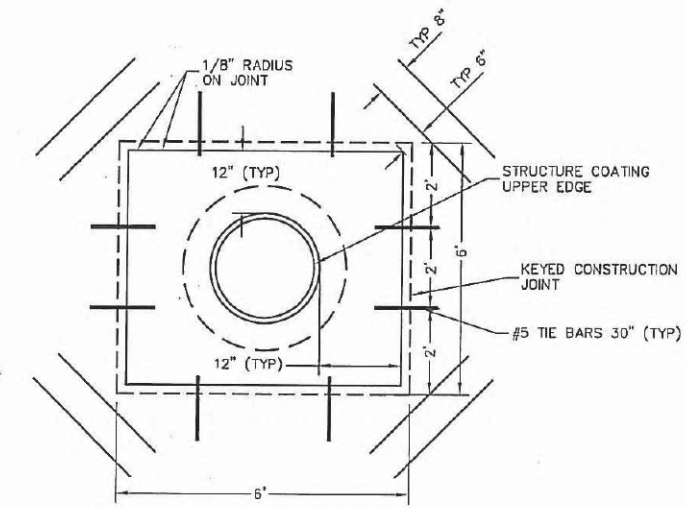


- NOTES:**
1. DEFORMED TIE BARS SHALL CONFORM TO THE REQUIREMENTS OF AASHTO M-31 OR M-53 WITH AN ELONGATION NOT LESS THAN 20%.
  2. HOT POURED JOINT MATERIAL SHALL CONFORM TO THE REQUIREMENTS OF AASHTO SPECIFICATION M-173-80 FOR CONCRETE JOINT SEALER.
  3. ALL TIE BARS AND DOWEL BARS ARE TO BE EPOXY COATED.
  4. SPLIT BOARD HEADERS WILL NOT BE ALLOWED.

 CHICAGO DEPARTMENT OF TRANSPORTATION	DATE	REVISION	CITY OF CHICAGO		
	-	-	P.C.C. BASE COURSE JOINT DETAILS		
	DATE	SHEET	DRAWN BY		
	12/27/06	A-2-3C	CDOT		

**DETAIL OF STRUCTURE CASTING ISOLATION BOX FOR P.C.C. PAVEMENT AND P.C.C. BASE COURSE**

2-#4 DEFORMED TIE BARS 30" LONG AT A MID DEPTH (TYPICAL) SEE SPECIAL CONDITION BELOW.



DETAIL OF BOX IN PAVEMENT

**SPECIAL CONDITIONS:**

TIE BARS SHALL NOT BE INSTALLED AT ISOLATION BOX CORNERS WHERE EITHER SIDE OF THE BOX FORMING SAID CORNER IS A LONGITUDINAL OR TRAVERSE JOINT. MOREOVER, AT NO TIME SHALL A TIE BAR CROSS A JOINT (ALREADY FORMED OR PROPOSED) IN THE VICINITY OF THE ISOLATION BOX. IF THIS SITUATION OCCURS, THE TIE BAR SHALL BE ADJUSTED PARALLEL TO THE AXIS OF THE BAR SO THAT THE END OF THE BAR IS NO CLOSER THAN 1 1/2" TO THE JOINT.

ONLY BY THE DIRECTION OR APPROVAL OF THE COMMISSIONER SHALL THE DISTANCE BETWEEN THE UPPER EXTERNAL CASTING EDGE AND THE EDGE OF STANDARD ISOLATION BOX, SHOWN AS 12", BE INCREASED SO THAT AN IMMOVABLE LONGITUDINAL JOINT AND (OR) TRAVERSE JOINT WILL THEN THENCE FORM (O) SIDE (S) OF THE BOX. THIS ADJUSTMENT WILL BE ALLOWED ONLY WHEN THE DISTANCE BETWEEN THE SIDE OF THE STANDARD ISOLATION BOX AND IMMOVABLE JOINT IS 18" OR LESS.

BACKFILL MATERIAL AROUND STRUCTURE WILL BE COMPACTED TO 95% MODIFIED PROCTOR PRIOR TO THE PLACEMENT OF CONCRETE WITHIN THE ISOLATION BOX.

 CHICAGO DEPARTMENT OF TRANSPORTATION	DATE	REVISION	CITY OF CHICAGO		
	-	-	DETAILS OF STRUCTURE CASTING ISOLATION BOX		
	DATE	SHEET	DRAWN BY		
	12/21/06	A-2-12A	CDOT		

STATE OF ILLINOIS  
DEPARTMENT OF TRANSPORTATION

CHICAGO DEPARTMENT OF TRANSPORTATION  
STANDARD CONSTRUCTION DETAILS A-2-3C & A-2-12A  
SCALE: NONE SHEET 2 OF 4 SHEETS STA. TO STA.

F.A.I. RTE.	SECTION	COUNTY	TOTAL SHEETS	SHEET NO.
90/94/290	2013-011R	COOK	356	338
CONTRACT NO. 60W29				
ILLINOIS FED. AID PROJECT				