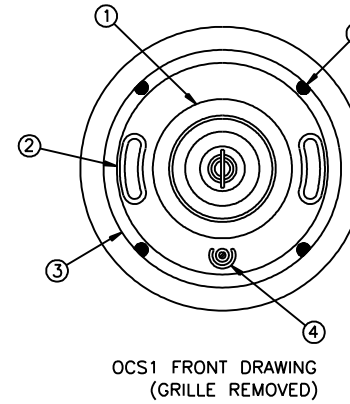
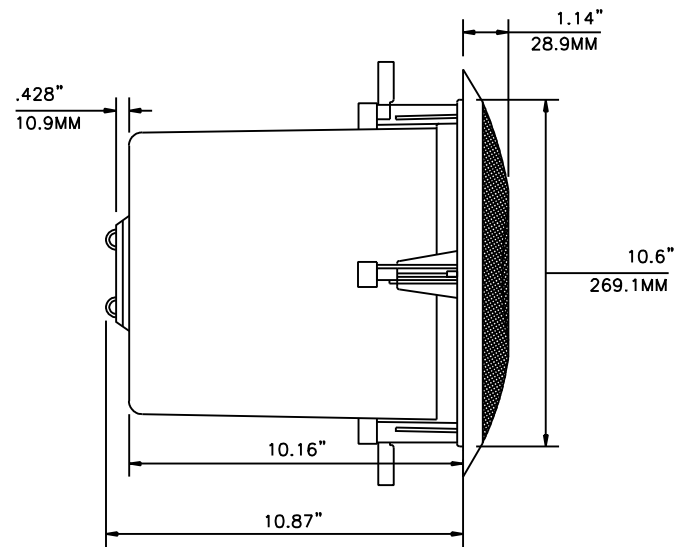
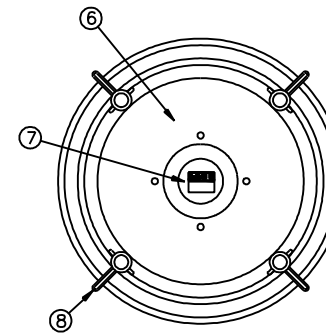


(GRILLE SHOWN PARTIALLY REMOVED)



OCS1 FRONT DRAWING  
(GRILLE REMOVED)



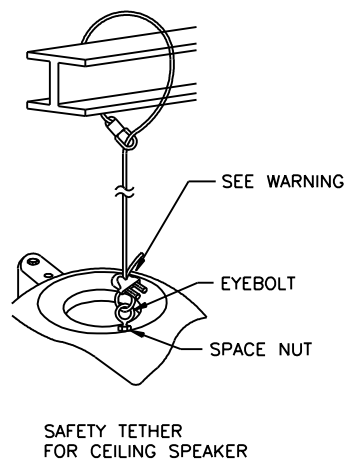
OCS1 REAR DRAWING

**NOTE:**

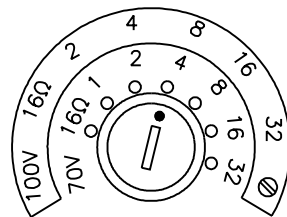
1. TAMPER PROOF HARDWARE TO BE USED TO SECURE THE INSTALLATION OF ALL SPEAKER ASSEMBLES.

**1 TYPE - 2 CEILING SPEAKER RECESSED MOUNT**  
NTS

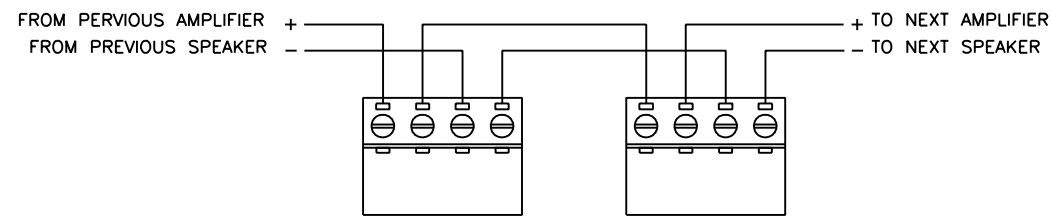
**2 TYPE 2 - SPEAKER DETAIL**  
NTS



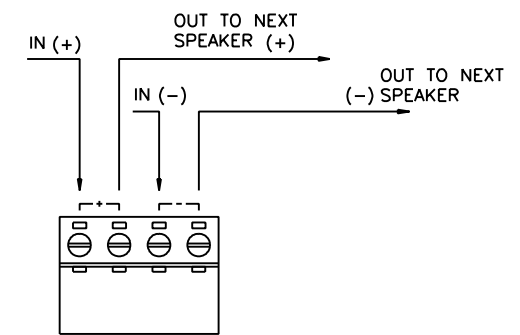
**3 SAFETY TETHER DETAIL**  
NTS



**4 TYPE 2 - SPEAKER TAP**  
NTS



**5 TYPE 2 - SPEAKER CONNECTION**  
NTS



A

USER NAME = habib	DESIGNED -	REVISED -
	CHECKED -	REVISED - 12/18/2013
PLOT SCALE = 2.0000 / in.	DRAWN -	REVISED -
PLOT DATE = 12/17/2013	CHECKED -	REVISED -

MUN	SECTION	COUNTY	TOTAL SHEETS	SHEET NO.
2090	2013-011R	COOK	356	302
CONTRACT NO.			60W29	