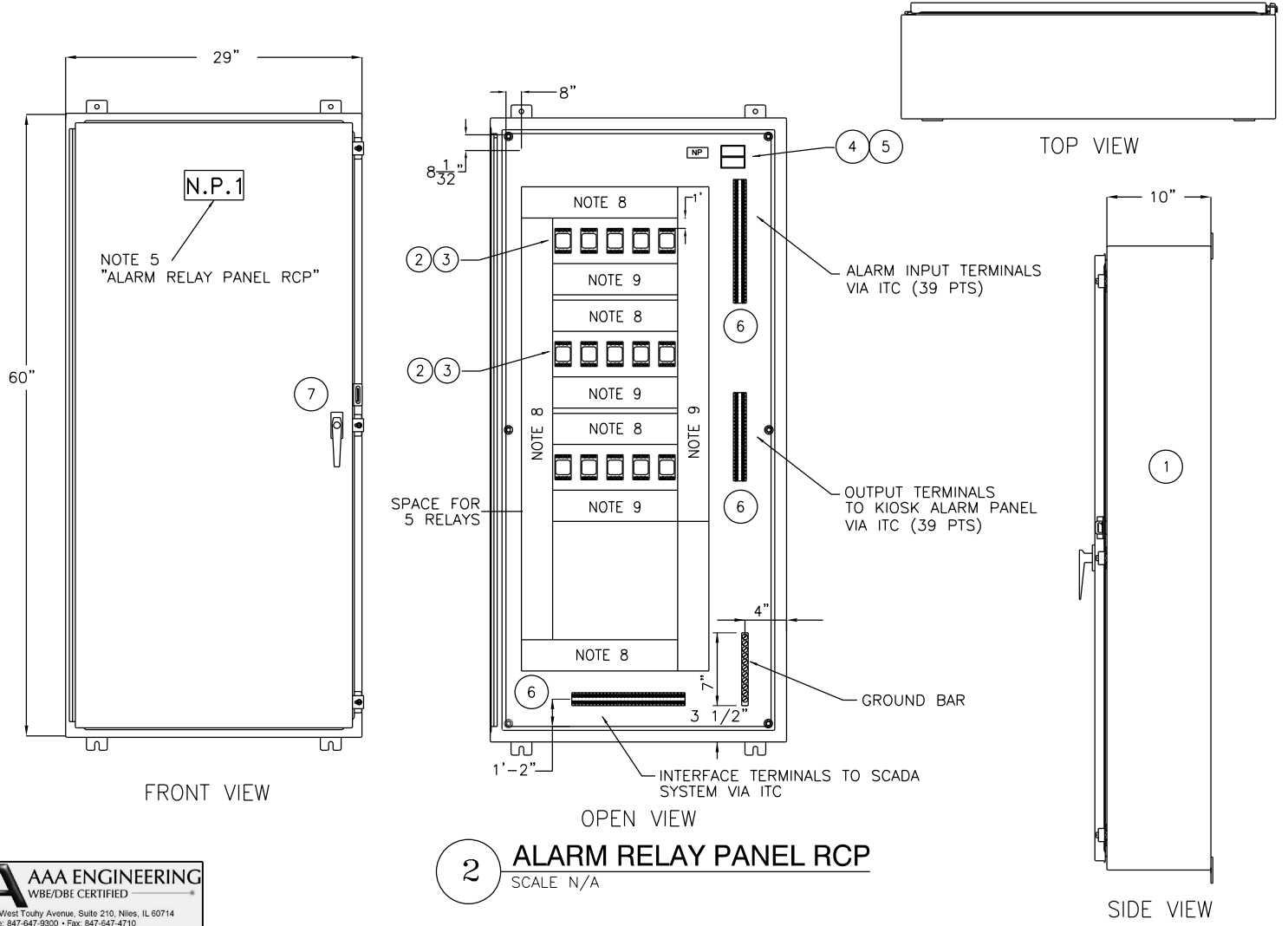


1 INTERFACE TERMINAL CABINET
SCALE N/A

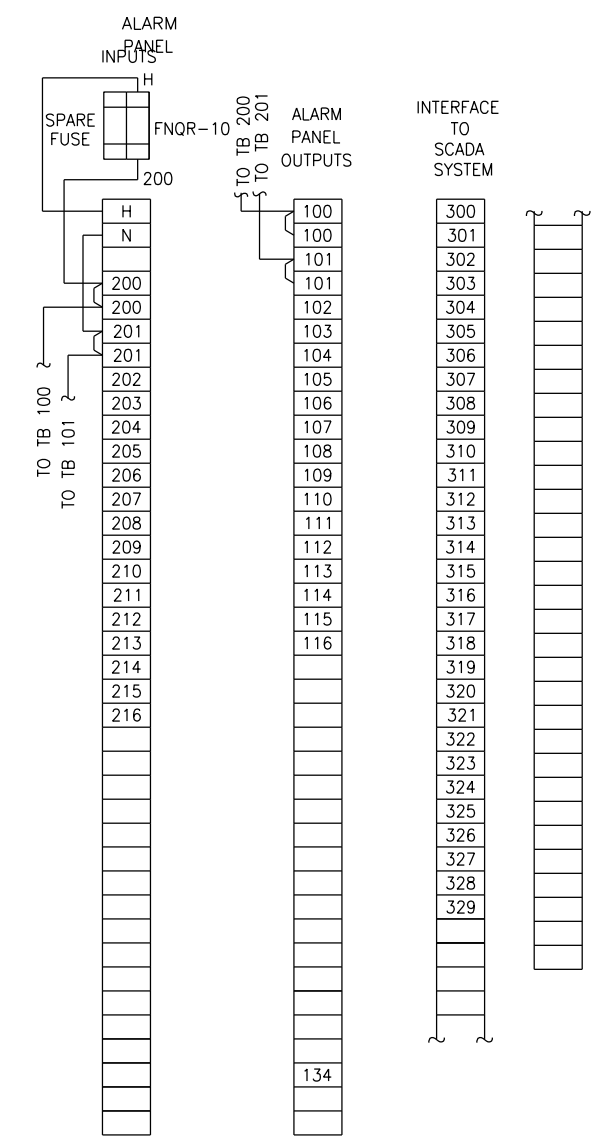
LEGEND	
ITEM NO.	DESCRIPTION
1	SEE NOTE 1
2	3PDT RELAY 120 VOLT WITH NEON INDICATOR
3	11 PIN SOCKET DIN RAIL MOUNT WITH HOLD DOWN SPRING
4	FUSE BLOCK 2 POLE CLASS CC
5	CONTROL FUSE 10 AMP 1 ACTIVE, 1 SPARE
6	3 POINT 30AMP 600 VOLT SCREW TYPE TERMINAL BLOCK
7	3 POINT LEVER HANDLE LOCK KEYED CAT 60
8	WHITE NYLON WIRE DUCT 3 X 3 WITH COVER

NOTES:

- ENCLOSURE SIMILAR TO HOFFMAN BULLETIN A12 EXCEPT MADE FROM 12 GAUGE GALVANEAL STEEL CONTINUOUSLY WELDED SEAMS, PRIMED AND FINISHED ANSI-61 WITH 12 GAGE BACK PAN PAINTED WHITE.
- SUB PANEL TO BE MOUNTED WITH VIBRATION DAMPERS.
- ALL RELAYS TO BE PROVIDED WITH RETAINING CLIPS.
- WIRE DUCT COVERS TO BE PROVIDED WITH USE IDENTIFICATION LABELS.
- 2 X 6 WHITE WITH BLACK 3/8" LETTERS TO BE ATTACHED WITH STAINLESS STEEL SCREWS.
- ALL CONTROL WIRING AWG TO BE #14 AWG TYPE SIS, 19 STRAND, COPPER, 600 VOLTS. ASSEMBLY TO BEAR UL 508 INDUSTRIAL CONTROL LABEL. ALL INTERNAL CONNECTIONS TO BE MADE WITH PANDUIT INSULATED RING TOUNGE LUGS WHEN POSSIBLE.
- CONNECTIONS TO RELAY SOCKETS TO BE MADE WITH PANDUIT INSULATED LOCKING FORK LUGS.
- 3X3 DUCT (SCADA).
- 3X3 DUCT (AC).



2 ALARM RELAY PANEL RCP
SCALE N/A



USER NAME = habib	DESIGNED -	REVISED - 12/18/2013
	CHECKED -	REVISED
PLOT SCALE = 0:2' = 1" / 1"	DRAWN -	REVISED
PLOT DATE = 12/17/2013	CHECKED -	REVISED

STATE OF ILLINOIS
DEPARTMENT OF TRANSPORTATION

PEORIA STREET STATION
ELECTRICAL INTERFACE TERMINAL CABINET & ALARM RELAY PANEL RCP

MUN 2090	SECTION 2013-011R	COUNTY COOK	TOTAL SHEETS 356	SHEET NO. 281
CONTRACT NO. 60W29			ILLINOIS FED. AID PROJECT	

SHEET NO.E-205 OF 117 SHEETS

3:45:00 PM 2/8/13 60W29.dgn