

PLUMBING FIXTURE SCHEDULE

QTY.	FIXTURE	SYMBOL	SIZE	TYPE	MANUFACTURER	MODEL NO.	COLOR	MATERIAL	TRAP	CARRIER	MOUNTING HEIGHT	SUPPLY FITTING	STOP VALVE	REMARKS
1	LAVATORY	LAV	20"x18-1/4"	WALL MOUNTED	AMERICAN STANDARD	0356.015	WHITE	VITREOUS CHINA	1-1/4" C.P. "P" TRAP WITH ESCUTHEON	J.R. SMITH 0750	34" TO RIM	CHICAGO FAUCETS 404-VE-2805CP	PAIR CHICAGO FAUCET 1005-CP	FAUCET HOLES ON 8" CENTERS. LAVATORY TO BE ADA COMPLIANT, PIPE ACCORDINGLY. GRID DRAIN, INSULATE WITH TRUEBRO INSULATION.
1	WATER CLOSET	WC	31-3/4"x19-1/2"	WALL MOUNTED	AMERICAN STANDARD	3351.001	WHITE	VITREOUS CHINA	INTEGRAL	J.R. SMITH 0230	17" TO RIM	SLOAN 115-1.6	INTEGRAL	WATER CLOSET TO BE ADA COMPLIANT. SEAT TO BE CHURCH #2955SSC WITH OPEN FRONT, WITHOUT COVER.
1	MOP SINK	MS	24"x24"x12"	FLOOR MOUNTED	FIAT	TSBC-1610	BLACK & WHITE	TERRAZO	3" C.P. "P" TRAP WITH ESCUTHEON	--	ON FLOOR	CHICAGO FAUCETS 911-ISC	INTEGRAL	MOP SINK TO BE PROVIDED WITH VACUUM BREAKER (MTD 7'-6" AFF). INCLUDE FIAT #832-AA HOSE W/BRACKET AND FIAT #889-CC MOP HANGER.

KOHLER, ELJER, AND CRANE ARE APPROVED EQUALS FOR LAVATORIES AND WATER CLOSETS. FLORESTONE, CREATIVE INDUSTRIES, AND ELSMERE ARE APPROVED EQUALS FOR MOP SINKS.

DRAIN FITTING SCHEDULE

SYM.	TYPE	SIZE	MANUFACTURER	MODEL NO.	TOP FINISH	REMARKS
FD-2	FLOOR DRAIN	4"	J.R. SMITH	2010-B-U	8" SQUARE NICKEL-BRONZE	COATED CAST IRON BODY; SECURED SQUARE HOLE GRATE SEEPAGE FLANGE, BOTTOM CAULK OUTLET 4" CI "P" TRAP.
FD-3	FLOOR DRAIN	4"	J.R. SMITH	2010-KB-U	8" SQUARE NICKEL-BRONZE	COATED CAST IRON BODY; 4" CAST IRON "P" TRAP; SEDIMENT BUCKET, VANDAL PROOF SCREWS, FLASHING COLLAR.
CO	CLEAN OUT	4"	J.R. SMITH	4420	---	CAST IRON CLEANOUT FERRULE, BRONZE COUNTERSUNK PLUG.
FCO	FLOOR CLEAN OUT	4"	J.R. SMITH	4023	SATIN NIKALOY	CAST IRON CLEANOUT FERRULE, BRONZE COUNTERSUNK PLUG.
WCO	WALL CLEAN OUT	4"	J.R. SMITH	4422	5-1/2" ROUND STAINLESS STEEL	ACCESS COVER, CENTER SCREW, COATED CAST IRON CLEANOUT FERRULE WITH NO-HUB CONNECTION AND BRONZE COUNTERSUNK PLUG.
RD-1	ROOF DRAIN	4"	J.R. SMITH	1010 ERC	POLYETHYLENE DOME	CI BODY, COMBINED FLASHING CLAMP, GRAVEL STOP, EXTENSION, SUMP RECEIVER AND UNDERDECK CLAMP.

JOSAM, ZURN, AND WADE ARE APPROVED EQUALS.
CLEANOUTS TO BE ADDED AS NEEDED, AT INTERVALS NO LARGER THAN FIFTY FEET AND ANY CHANGE IN DIRECTION.

WATER HEATER (WH)

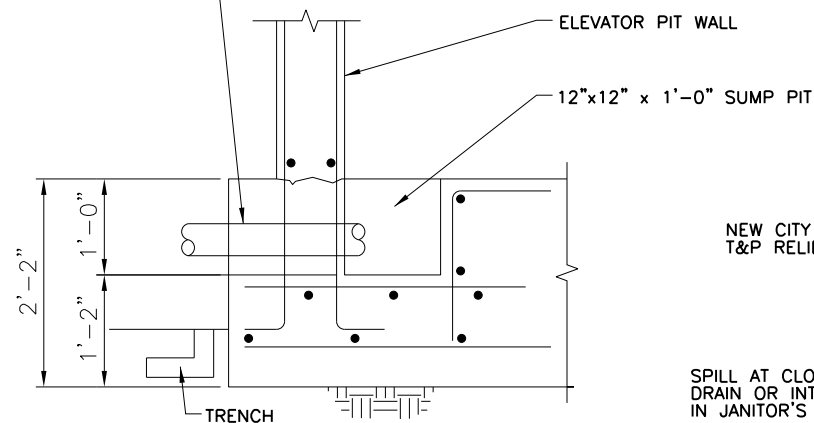
THE HEATER SHALL BE A GLASS-LINED CUSTOM XI COMMERCIAL ELECTRIC MODEL NO. DSE-5 AS MANUFACTURED BY A.O. SMITH CORPORATION. HEATER SHOULD BE REATED AT 3KW, 208 VOLTS, 1 PHASE, 60 CYCLE AC AND CONSTRUCTED IN ACCORDANCE WITH ASME CODE, SHALL BEAR APPROPRIATE SYMBOL AND BE LISTED WITH THE NATIONAL BOARD AS REQUIRED. HEATER SHALL BE LISTED WITH UNDERWRITER'S LABORATORIES AND APPROVED TO THE NATIONAL SANITATION FOUNDATION STANDARD NO. 5. ALL INTERNAL SURFACES OF THE TANK SHALL BE GLASS-LINED WITH AN ALKALINE BOROSILICATE COMPOSITION THAT HAS BEEN FUSED-TO-STEEL BY FIRING AT A TEMPERATURE OF 1600°F. TANK SHALL BE CATHODICALLY PROTECTED WITH POWERED ANODES. THE ENTIRE VESSEL IS TO BE ENCLOSED IN A ROUND STEEL ENCLOSURE WITH BAKED ENAMEL FINISH. WATER HEATER SHALL HAVE AN ELECTRONIC CONTROL WITH LCD DISPLAYING CURRENT WATER HEATER STATUS; PROVIDE REAL TIME ELEMENT STATUS AND SENSING, LOW CUTOFF AND ECONOMY MODE OPERATION. SHALL HOUSE 120 VOLT CONTROL CIRCUIT TRANSFORMER, TRANSFORMER FUSING, MAGNETIC CONTRACTOR(S), ELEMENT FUSING PER N.E.C., AND COMMERCIAL GRADE INCOLOY SHEATHED FLANGE MOUNTED ELEMENTS WITH PREWIRED TERMINAL LEADS. TEMPERATURE CONTROLS INCLUDED LIMITING SWITCH WHICH WILL REQUIRE RESETTING MANUALLY IN THE EVENT THE TEMPERATURE REACHES 190°F. FOAM INSULATION SHALL MEET OR EXCEED THE THERMAL EFFICIENCY AND/OR STANDBY LOSS REQUIREMENTS OF THE U.S. DEPARTMENT OF ENERGY AND CURRENT EDITION OF ASHRAE/IESNA 90.1. HEATER SHALL INCLUDE A CSA CERTIFIED AND ASME RATED T&P RELIEF VALVE AND DRAIN VALVE. WATER HEATER SHOULD INCORPORATE THE ICOMM SYSTEM FOR REMOTE MONITORING, LEAK DETECTION AND FAULT ALERT.

PLUMBING SYMBOL & ABBREVIATION LIST

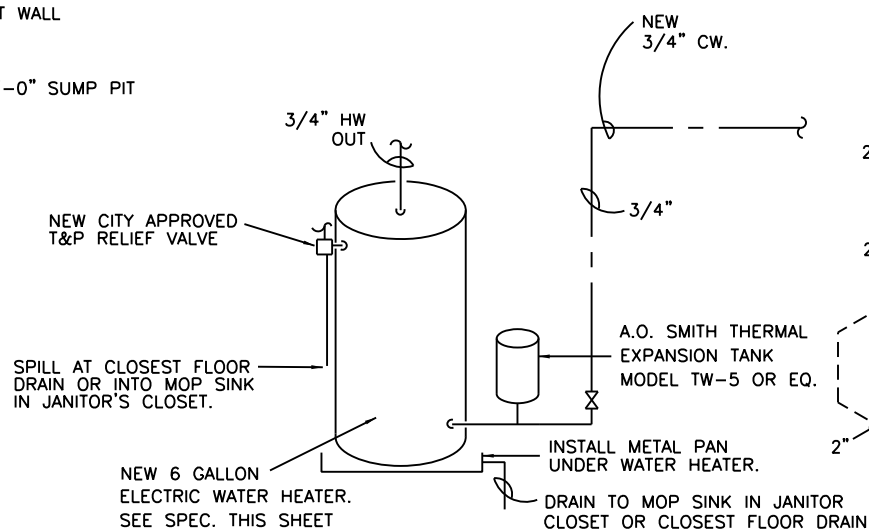
CI	CAST IRON	RD	ROOF DRAIN
CO	CLEAN OUT	S	SANITARY SEWER
CONT.	CONTINUED	SP	SUMP PUMP
CW	COLD WATER	SS	SERVICE SINK
DN	DOWN	ST	STORM SEWER
DS	DOWN SPOUT	TYP	TYPICAL
F/B	FROM BELOW	V	VENT
FCO	FLOOR CLEAN OUT	VB	VACUUM BREAKER
FD	FLOOR DRAIN	VTR	VENT THRU ROOF
HB	HOSE BIBB	WC	WATER CLOSET
HW	HOT WATER	WCO	WALL CLEAN OUT
LAV	LAVATORY	WH	WATER HEATER
NTS	NOT TO SCALE	⊙	CONNECT TO EXISTING
OSD	OPEN-SITE DRAIN		

— S —	SANITARY SEWER (ABOVE GROUND)
- - - S - - -	SANITARY SEWER (BELOW GROUND)
— ST —	STORM SEWER (ABOVE GROUND)
- - - ST - - -	STORM SEWER (BELOW GROUND)
- - - V - - -	VENT PIPING
— C —	COLD WATER PIPING
— H —	HOT WATER PIPING
— T —	HEAT-TRACED PIPING
— T —	PIPE TURNED DOWN
— T —	PIPE TURNED UP
— T —	TEE TURNED DOWN
— T —	TEE TURNED UP
— G —	GATE VALVE
— C —	CHECK VALVE
— B —	BALL VALVE

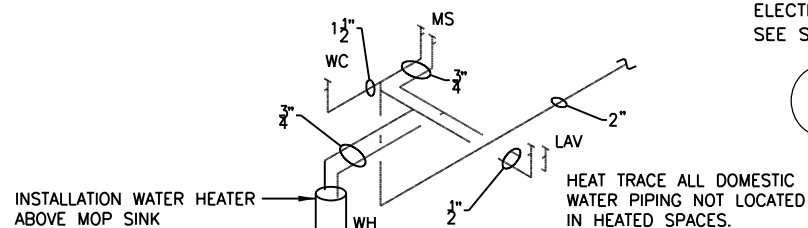
SPILL OUT ONTO CONCRETE GUTTER ALONG NORTH SIDE OF PLATFORM. INSTALL GRATED CAPS AT BOTH ENDS TO KEEP RODENTS OUT OF PIPE AND ELEVATOR SHAFT. PIPE TO BE 4".



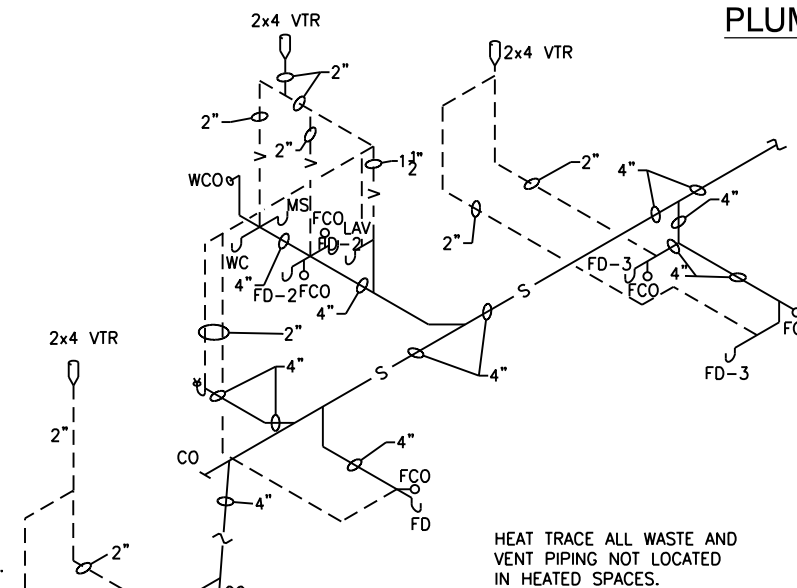
1 ELEVATOR SUMP PIPING DIAGRAM
SCALE: NTS



3 ELECTRIC WATER HEATER DIAGRAM
SCALE: NTS



2 WATER SUPPLY DIAGRAM
SCALE: NTS



4 WASTE AND VENT RISER DIAGRAM
SCALE: NTS

NOTES:

- ALL WASTE, HOT & COLD WATER PIPING IN NON-HEATED AREAS TO BE HEAT-TRACED AND INSULATED.
- COLD WATER SUPPLY CONNECTIONS FOR FIXTURES TO BE ON THE RIGHT AND HOT WATER SUPPLY CONNECTIONS FOR FIXTURES TO BE ON THE LEFT.
- HEAT TRACING AND HEAT TRACING CONTROLS BY ELECTRICAL CONTRACTOR. SEE ELECTRICAL DRAWINGS.

**THIS IS A BUY USA (AMERICAN) PROJECT,
ALL EQUIPMENT TO BE MANUFACTURED IN THE USA**

AAA ENGINEERING
WBE/DBE CERTIFIED
5940 West Touhy Avenue, Suite 210, Niles, IL 60714
Phone: 847-647-9300 • Fax: 847-647-4710

TranSystems

USER NAME = hab1b	DESIGNED -	REVISED - 12/18/2013
	CHECKED -	REVISED
PLOT SCALE = 2:0' in / in.	DRAWN -	REVISED
PLOT DATE = 12/17/2013	CHECKED -	REVISED

**STATE OF ILLINOIS
DEPARTMENT OF TRANSPORTATION**

**PEORIA STREET STATION
PLUMBING NOTES, DIAGRAMS AND SYMBOL LIST**

MUN	SECTION	COUNTY	TOTAL SHEETS	SHEET NO.
2090	2013-011R	COOK	356	266
CONTRACT NO.			60W29	

SHEET NO. P-002 OF 117 SHEETS

ILLINOIS FED. AID PROJECT