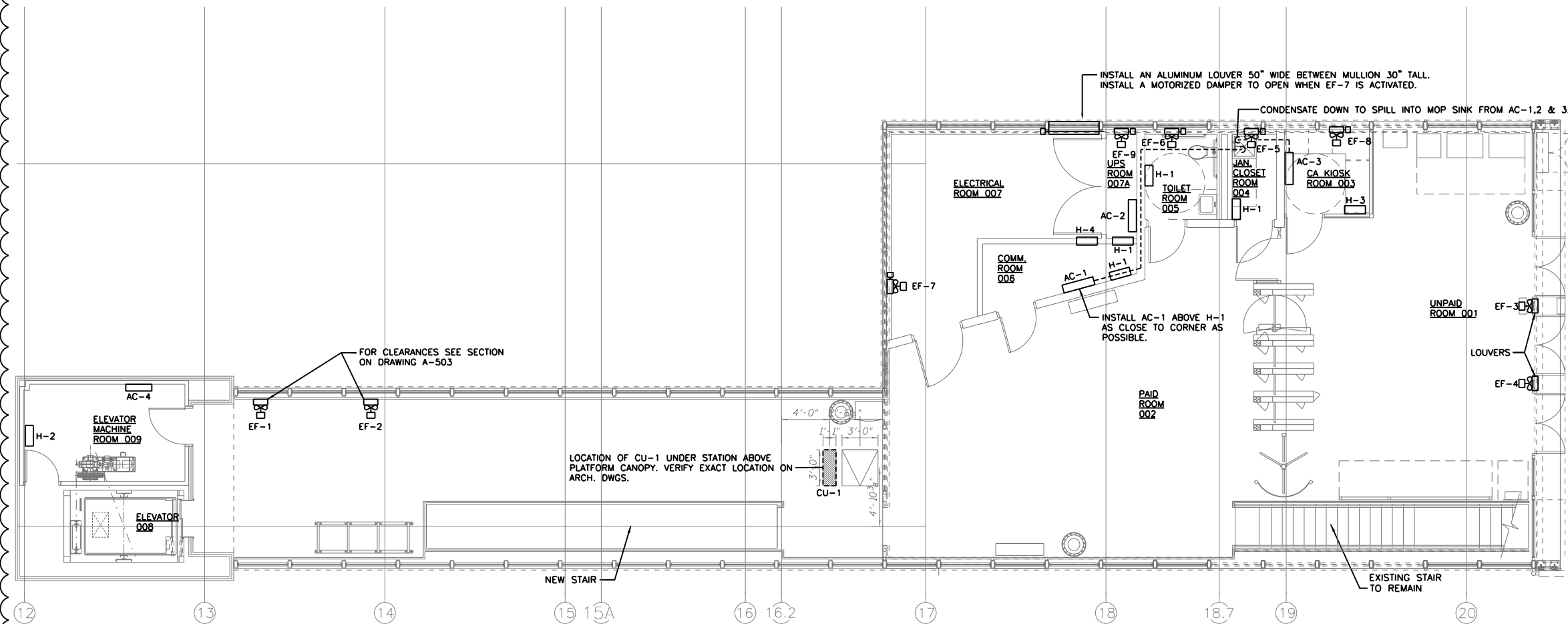
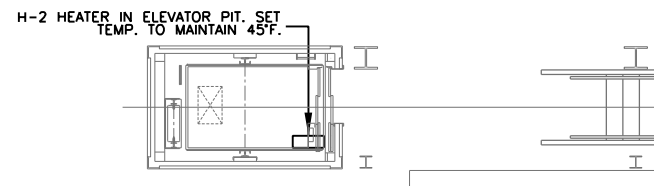


NOTES:

1. EXHAUST FAN EF-7 TO BE BEHIND THE ARCHED LOUVERS ABOVE WINDOWS. BLANK OFF UNUSED LOUVERS. INSTALL MOTORIZED DAMPER BETWEEN LOUVER AND FAN. WHEN FAN IS ACTIVATED, DAMPER TO OPEN IF FAN IS NOT OPERATING; DAMPER TO REMAIN CLOSED.
2. EXHAUST FANS EF-5, EF-6, EF-8 & EF-9 TO BE MOUNTED JUST BELOW CEILING. PROVIDE LOUVER AND MOTORIZED DAMPER TO ACCOMMODATE SIZE OF FAN BEING INSTALLED. IF FANS ARE INACTIVE, DAMPERS TO OPEN. IF FANS ARE ACTIVE, DAMPERS TO REMAIN CLOSED.
3. EXHAUST FANS EF-3 & EF-4 TO BE BEHIND ARCHED LOUVERS ABOVE WINDOWS. BLANK OFF UNUSED LOUVERS. DAMPERS ARE NOT INSTALLED FOR THESE FANS.
4. EXHAUST FANS EF-1 & EF-2 TO BE MOUNTED JUST BELOW CEILING. PROVIDE LOUVERS, BLANK OFF UNUSED PORTIONS OF LOUVERS. SEE SECTION ON DWG A-503.
5. AC-1 & AC-2 TO HAVE CONDENSATE PUMPS. THESE PUMPS TO PUMP THE CONDENSATE FROM THESE EVAPORATOR COILS OVERHEAD, AND SPILL INTO THE MOP SINK IN THE JANITORS CLOSET. PUMPS TO BE ZOELLER MODEL 521, OR EQUAL.
6. AC-4 TO HAVE ITS CONDENSATE SPILL ONTO THE CANOPY BELOW AND DRAIN TO STORM SEWER.
7. INSTALL A TEMPERATURE ALARM IN THE COMM ROOM. ALARM TO SOUND IF TEMPERATURE DROPS BELOW 55°F, OR GOES ABOVE 80°F. ALARMS TO SIGNAL REMOTELY PER SPECIFICATIONS.



1 STATION HOUSE MECHANICAL FLOOR PLAN
SCALE: 3/16" = 1'-0"



2 PLATFORM MECHANICAL PLAN
SCALE: 3/16" = 1'-0"

**THIS IS A BUY USA (AMERICAN) PROJECT,
ALL EQUIPMENT TO BE MANUFACTURED IN THE USA**

AAA ENGINEERING
WBE/DBE CERTIFIED
5940 West Touhy Avenue, Suite 210, Niles, IL 60714
Phone: 847-647-9300 • Fax: 847-647-4710



USER NAME = habib	DESIGNED -	REVISED -
	CHECKED -	REVISED -
PLOT SCALE = 10:8 1/2" / in.	DRAWN -	REVISED -
PLOT DATE = 12/17/2013	CHECKED -	REVISED -

**STATE OF ILLINOIS
DEPARTMENT OF TRANSPORTATION**

**PEORIA STREET STATION
MECHANICAL STATION HOUSE & PARTIAL PLATFORM PLANS**

MUN	SECTION	COUNTY	TOTAL SHEETS	SHEET NO.
2090	2013-011R	COOK	356	262
CONTRACT NO.			60W29	

SHEET NO. M-001 OF 117 SHEETS

ILLINOIS FED. AID PROJECT

3:34:09 PM 2/6/2013