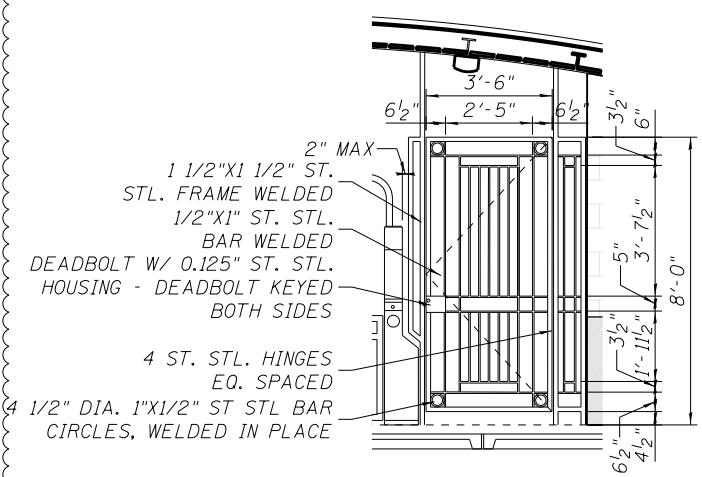
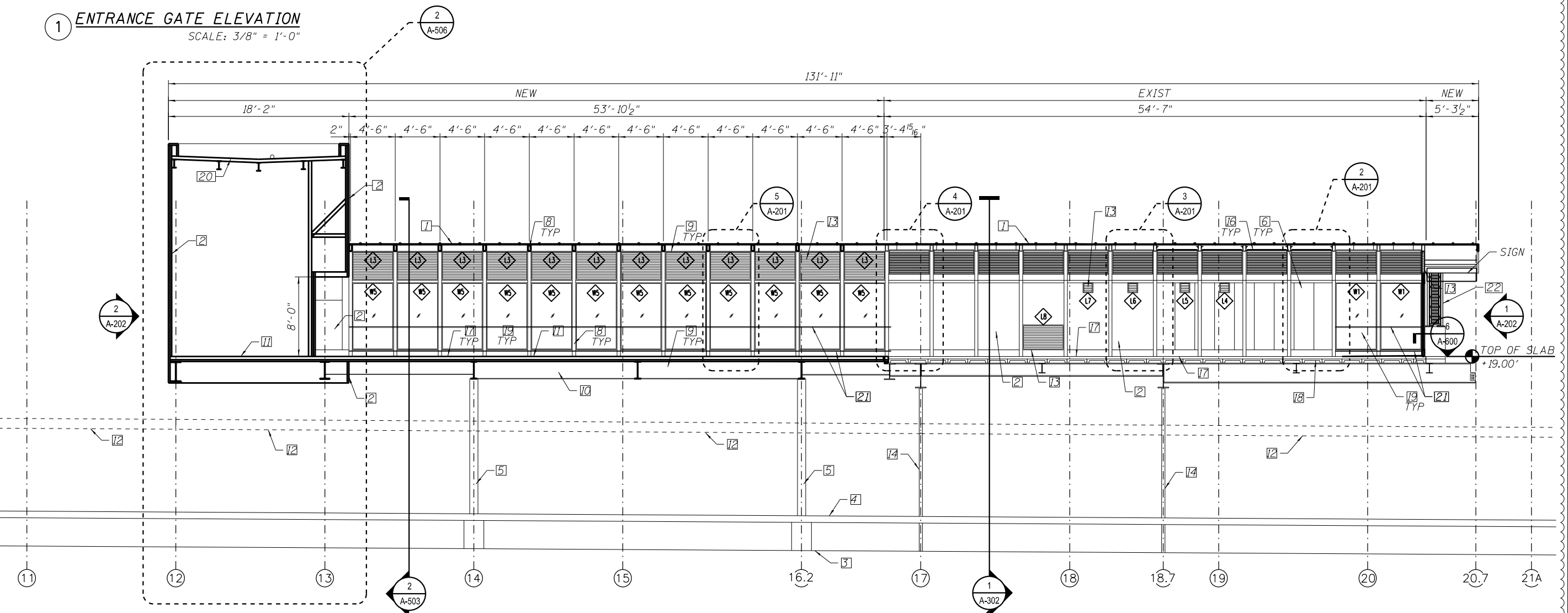


- KEY NOTES:
1. TRANSLUCENT ROOF PANEL SYSTEM.
 2. INSULATED ST. STL. PANEL WALL SYSTEM.
 3. FINISH GRADE.
 4. PLATFORM.
 5. NEW COLUMN PREP AND PAINT- SEE STRUCTURAL DWGS.
 6. TRANSLUCENT WALL PANEL SYSTEM TO MATCH ROOF COLOR.
 7. NOT USED.
 8. NEW STEEL TUBE STRUCTURE-SEE STR DWGS.
 9. NEW STRUCTURAL FRAMING, SEE STR DWGS.
 10. STRUCTURAL BEAM.
 11. FINISH FLOOR LEVEL.
 12. PLATFORM CANOPY AND CANOPY COLUMNS DASHED FOR CLARITY.
 13. LOUVER.
 14. EXIST STATION COLUMN TO REMAIN.
 15. NOT USED.
 16. LINEAR METAL CEILING SYSTEM.
 17. NEW CONC SLAB.
 18. EXIST PRECAST PLANK.
 19. 1/2 LAMINATED GLASS.
 20. SBS ROOF SYSTEM.
 21. WINDOW GUARDRAIL.
 22. DECORATIVE RAILING PARAPET MOUNTED SEE SHEET 158



1 **ENTRANCE GATE ELEVATION**
SCALE: 3/8" = 1'-0"



1 **STATION SECTION LOOKING NORTH**
SCALE: 3/16" = 1'-0"
*INTERIOR PARTITION AND EQUIPMENT NOT SHOWN FOR CLARITY



4:31:53 PM 0161708-60W29-A-301.dgn



USER NAME = whbruce	DESIGNED - WHB	REVISED - 1/20/2014
	CHECKED - CRR	REVISED -
PLOT SCALE = 128:0.0015 in:in / in.	DRAWN - WHB	REVISED -
PLOT DATE = 1/20/2014	CHECKED - CRR	REVISED -

**STATE OF ILLINOIS
DEPARTMENT OF TRANSPORTATION**

**PEORIA STREET STATION
STATION SECTION**

SHEET NO. A-301 OF 117 SHEETS

MUN 2090	SECTION 2013-011R	COUNTY COOK	TOTAL SHEETS 356	SHEET NO. 238
CONTRACT NO. 60W29			ILLINOIS FED. AID PROJECT FED. AID PROJECT	