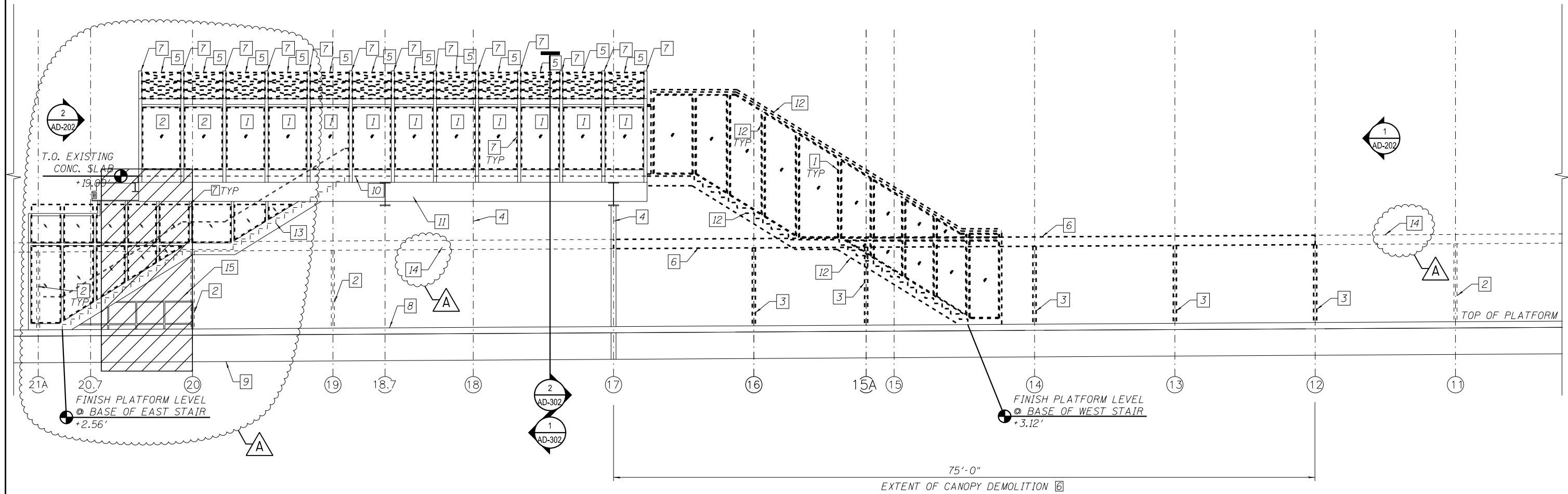


KEY NOTES:

1. REMOVE GLAZING AND GLAZING STOPS AND SCREWS.
2. EXISTING PLATFORM CANOPY COLUMN TO REMAIN.
3. REMOVE PLATFORM CANOPY COLUMN IN ITS ENTIRETY, SEE STRUCTURAL DRAWINGS.
4. EXISTING STATION COLUMN TO REMAIN.
5. REMOVE SKYLIGHT UNITS AND SCREWS IN THEIR ENTIRETY, TYP.
6. REMOVE EXISTING PLATFORM CANOPY.
7. EXISTING STEEL TUBE STRUCTURE TO REMAIN, TYP.
8. PLATFORM LEVEL.
9. FINISH GRADE.
10. FINISH FLOOR LEVEL.
11. EXISTING STEEL BEAM TO REMAIN.
12. REMOVE EXISTING PEORIA STREET STATION WEST STAIR REMOVE AND STORE FOR REINSTALLATION STRINGERS AND CAST IRON TREADS.
13. EXISTING PEORIA STREET STATION CENTRAL STAIRS, STRINGERS TO REMAIN. REMOVE AND STORE FOR REINSTALLATION CAST IRON TREADS. REMOVE EXISTING GLASS, GLASS STOPS AND SCREWS.
14. EXISTING PLATFORM CANOPY DASHED FOR CLARITY.
15. SEE STRUCTURAL DRAWINGS FOR TEMPORARY SHORING OF STATION FLOOR FRAMING.



1 DEMOLITION STATION NORTH ELEVATION  
SCALE: 3/16" = 1'-0"



2:01:43 PM 01/17/08-GOW29-AD-201.dgn



USER NAME = whbruce	DESIGNED - WHB	REVISED - 12/18/2013
PLOT SCALE = 10:8.0000 ' / in.	CHECKED - CRR	REVISED -
PLOT DATE = 12/17/2013	DRAWN - WHB	REVISED -
	CHECKED - CRR	REVISED -

STATE OF ILLINOIS  
DEPARTMENT OF TRANSPORTATION

PEORIA STREET STATION  
DEMOLITION STATION ELEVATION

SHEET NO. AD-201 OF 117 SHEETS

MUN	SECTION	COUNTY	TOTAL SHEETS	SHEET NO.
2090	2013-011R	COOK	356	221
CONTRACT NO.			60W29	
ILLINOIS FED. AID PROJECT		FED. AID PROJECT		