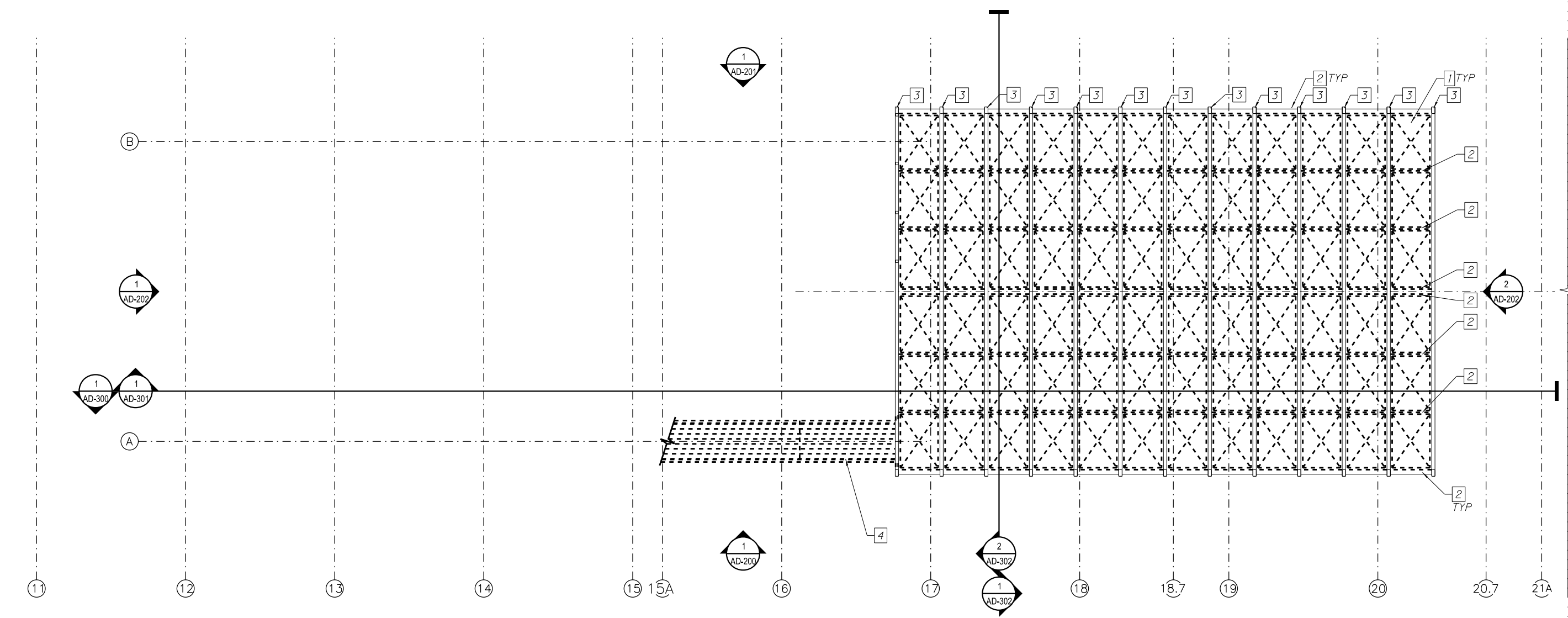


- KEY NOTES:
1. REMOVE SKYLIGHT UNITS AND SCREWS IN THEIR ENTIRETY, TYP.
  2. EXISTING STRUCTURAL FRAMING TO REMAIN, TYP.
  3. EXISTING STEEL TUBE STRUCTURE TO REMAIN.
  4. REMOVE STAIR ROOF IN ITS ENTIRETY.



1 DEMOLITION STATION ROOF PLAN  
SCALE: 3/16" = 1'-0"

8:49:38 AM 01/17/08-60W29-AD-130.dgn



USER NAME = whbruce	DESIGNED - WHB	REVISED $\Delta$ 12/18/2013
	CHECKED - CRR	REVISED —
PLOT SCALE = 10:8.0015 ft:in / in.	DRAWN - WHB	REVISED —
PLOT DATE = 12/18/2013	CHECKED - CRR	REVISED —

STATE OF ILLINOIS  
DEPARTMENT OF TRANSPORTATION

PEORIA STREET STATION  
DEMOLITION STATION ROOF PLAN

SHEET NO. AD-130 OF 117 SHEETS

MUN	SECTION	COUNTY	TOTAL SHEETS	SHEET NO.
2090	2013-011R	COOK	356	219
CONTRACT NO. 60W29			ILLINOIS FED. AID PROJECT FED. AID PROJECT	