

**DETAILED KEYED NOTES:**

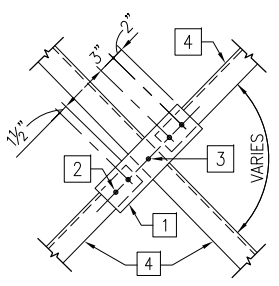
- SEE SCHEDULE FOR NUMBER, N, OF 3/4"Ø, A325-N BOLTS.
- L3½x3½x5/16 x "L"
- COPE BOTTOM FLANGE AS REQUIRED.

**C1 ALL-BOLTED DOUBLE ANGLE CONNECTION TYPICAL DETAIL**  
1-1/2 = 1'-0"

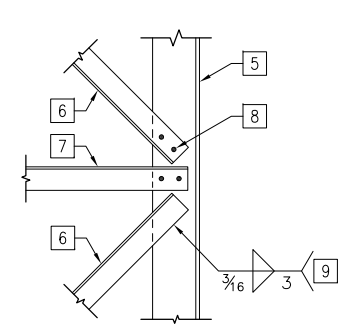
CONNECTION SCHEDULE				
BEAM DEPTH	A (IN)	L (IN)	N	V (KIP)
W8, W10	1	5½	2	38
W12, W14	1½	8½	3	57
W16	1½	11½	4	76
W18	1½	14½	5	95
W21	2	17½	6	114
W24, W27	2½	20½	7	133
W30	2½	23½	8	152
W33	3	26½	9	171
W36	3	29½	10	190

**NOTES:**

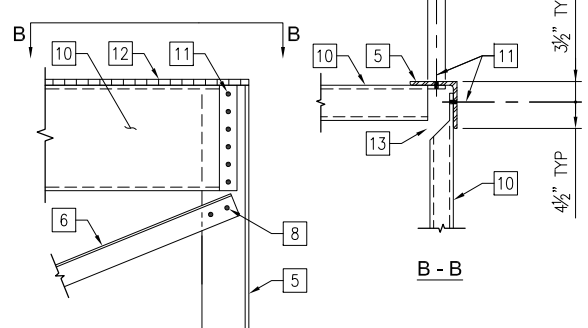
- APPLICABLE FOR CONNECTIONS WITH SKEW ANGLE LESS THAN 5°.
- BEND TO SKEW REQ'D FOR SKEW ANGLE LESS THAN 5°.
- SHEAR CAPACITIES, V, INDICATED ARE UNFACTORED, ASD CONNECTION CAPACITIES.
- SHEAR VALUES ARE BASED ON AISC CONSTRUCTION MANUAL, 14TH EDITION.



**C2 DETAIL**  
3/4" = 1'-0"

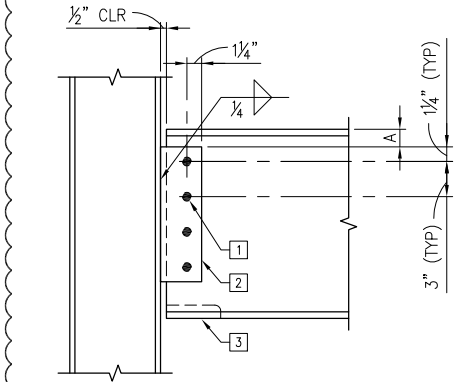


**C3 DETAIL**  
3/4" = 1'-0"



**C4 DETAIL**  
3/4" = 1'-0"

- KEYED NOTES:**
- Ø 3/8x6 x 2-0.
  - (2) 3/4"Ø BOLTS.
  - (1) 3/4"Ø BOLT.
  - L4x4x¼ DIAGONAL BRACE.
  - L8x8x5/8 ELEVATOR TOWER LEG.
  - DIAGONAL BRACE. SEE S-200 FOR SIZE.
  - HORIZONTAL BRACE. SEE S-200 FOR SIZE.
  - (2) 3/4"Ø BOLTS, TYPICALLY AT EACH END OF EACH BRACE.
  - FOR CONNECTIONS MADE AT OR BELOW EL= 11.00FT, PROVIDE WELDS AS INDICATED IN LIEU OF BOLTED CONNECTIONS.
  - HSS MEMBER. SEE S-200 FOR SIZE.
  - Ø (6) 3/4"Ø BOLTS AT HSS18 MEMBER, Ø (4) 3/4"Ø BOLTS AT HSS12 MEMBERS.
  - 1"x3/16" GALV GRATING.
  - COPE AND MITER SMALLER MEMBER AS REQUIRED TO ALLOW FOR ERECTION CLEARANCE.



**DETAIL KEYED NOTES:**

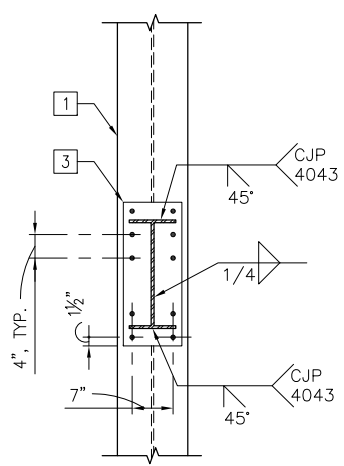
- SEE SCHEDULE FOR NUMBER, N, OF 3/4"Ø, A325-N BOLTS.
- Ø 3/8x4 x L. SEE SCHEDULE FOR LENGTH REQUIRED.
- COPE BOTTOM FLANGE AS REQUIRED.

**B1 STEEL BEAM CONNECTION TO STEEL BEAM OR COLUMN**  
1-1/2 = 1'-0"

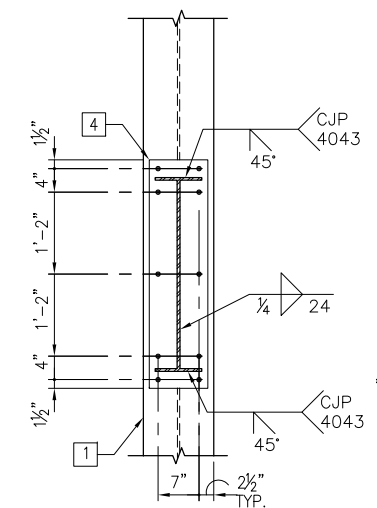
CONNECTION SCHEDULE				
BEAM DEPTH	A (IN)	L (IN)	N	V (KIP)
W8, W10	1	5½	2	17
W12	1½	8½	3	29
W14	1½	11½	4	41
W16, W18	1½	14½	5	53
W21	2	17½	6	63
W24	2½	20½	7	74
W27	2½	23½	8	84
W30	2½	26½	9	95

**NOTES:**

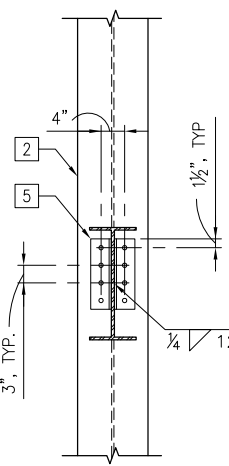
- SHEAR CAPACITIES, V, INDICATED ARE UNFACTORED, ASD CONNECTION CAPACITIES.
- SHEAR VALUES ARE BASED ON AISC CONSTRUCTION MANUAL, 14TH EDITION.



**B2 DETAIL**  
3/4" = 1'-0"

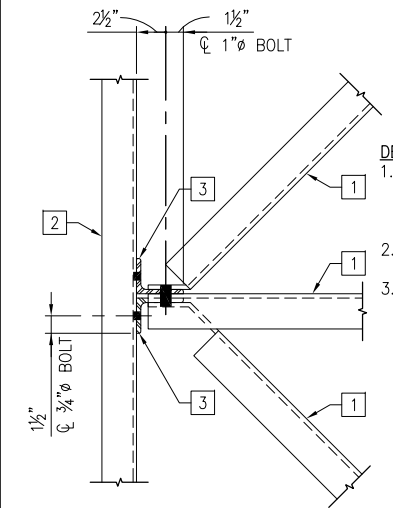


**B3 DETAIL**  
3/4" = 1'-0"



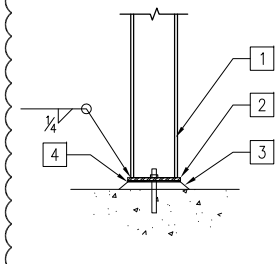
**B4 DETAIL**  
3/4" = 1'-0"

- KEY NOTES (B2, B3 & B4):**
- STL W14x159 COLUMN. SEE SHEET S-120 FOR LOCATION.
  - STL W14x159 OR AL 8WFX11.24 COLUMN. SEE S-120 FOR LOCATION.
  - AL Ø1/2x10 x 2-0½ W/ (10) SS BOLTS.
  - AL Ø1/2x10 x 3-3 W/ (10) SS BOLTS, PROVIDE 1/2" EDGE AND END DISTANCES.
  - AL L5x3x3/8 x 1-0, EA. SIDE W/ (4) 3/4"Ø, SS BOLTS.



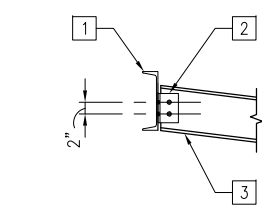
**B5 BRACING CONNECTION DETAIL**  
1-1/2" = 1'-0"

- DETAIL C3 KEYED NOTES:**
- AL L3x3x3/8. CUT AND BEND ENDS AS REQUIRED.
  - AL C12x10.4
  - AL L4x3x3/8 x 0-6, w/ (2) 3/4"Ø AND (1) 1"Ø SS BOLTS. PROVIDE 1/2" EDGE AND END DISTANCES.



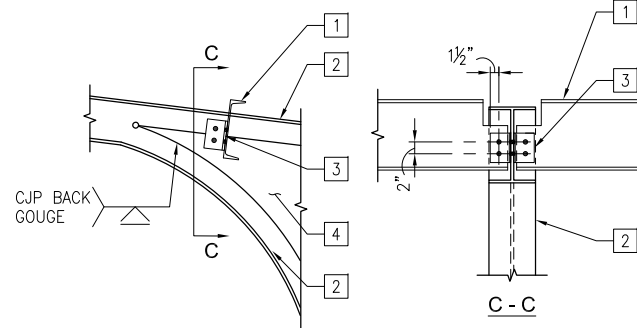
**A1 BASE PLATE CONNECTION DETAIL**  
3/4" = 1'-0"

- DETAIL A1 KEYED NOTES:**
- AL 8WF11.24 POST.
  - AL Ø1/2x9 x 0-99, W/ (2) 3/4"Ø SS EXPANSION ANCHORS, 5/4" EMBEDMENT. INSULATE ANCHOR BOLTS IN ACCORDANCE TO A4/S-600
  - 1½" NON-SHRINKAGE, NON-METALLIC GROUT.
  - ¼" FIBER REINFORCED ELASTOMERIC BEARING PAD.



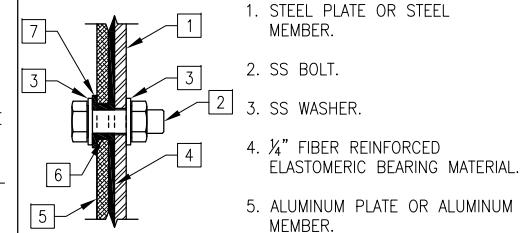
**A2 EXTERIOR BEAM CONNECTION DETAIL**  
3/4" = 1'-0"

- SECTION A2 KEYED NOTES:**
- AL C12x10.4
  - AL (2)L3x3x3/8, W/ (6) 3/4"Ø, SS BOLTS.
  - AL 8WF11.24 BENT.



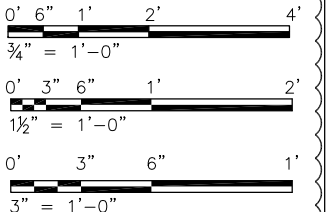
**A3 INTERIOR BEAM CONNECTION DETAIL**  
3/4" = 1'-0"

- DETAIL A3 KEYED NOTES:**
- AL C12x10.4.
  - TAPERED SECTION, AL 8WF11.24.
  - AL L3x3x3/8 0-6, EA. SIDE W/ (6) 3/4"Ø, 1/4"Ø EDGE DISTANCE SS BOLTS.
  - AL Ø1/2" WELDED TO AL 8WF TAPERED SECTION.



**A4 DETAIL**  
3" = 1'-0"

- DETAIL A4 KEYED NOTES:**
- STEEL PLATE OR STEEL MEMBER.
  - SS BOLT.
  - SS WASHER.
  - ¼" FIBER REINFORCED ELASTOMERIC BEARING MATERIAL.
  - ALUMINUM PLATE OR ALUMINUM MEMBER.
  - SYNTHETIC BUSHING.
  - SYNTHETIC BEARING MATERIAL.



USER NAME = MAC	DESIGNED KLT	REVISED 1/20/2014
CHECKED AB	REVISIONS	
PLOT SCALE =	DRAWN MAC	REVISIONS
PLOT DATE = 10/28/13	CHECKED KLT	REVISIONS

STATE OF ILLINOIS  
DEPARTMENT OF TRANSPORTATION

PEORIA STREET STATION  
SCHEDULES AND DETAILS

MUN 2090	SECTION 2013-011R	COUNTY COOK	TOTAL SHEETS 356	SHEET NO. 213
CONTRACT NO. 60W29			ILLINOIS FED. AID PROJECT FED. AID PROJECT	

SHEET NO. S-600 OF 117 SHEETS