

A1 SOUTH ELEVATION
3/8" = 1'-0"

A2 WEST ELEVATION
3/8" = 1'-0"

A3 NORTH ELEVATION
3/8" = 1'-0"

A4 EAST ELEVATION
3/8" = 1'-0"

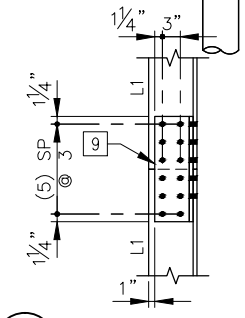
SHEET NOTES

- ALL EXISTING DIMENSIONS AND ELEVATIONS ARE SHOWN FOR REFERENCE ONLY AND SHALL BE VERIFIED PRIOR TO COMMENCEMENT OF CONSTRUCTION AND/OR FABRICATION OF ANY MEMBERS TO DETERMINE ANY CRITICAL DIMENSIONS THAT MAY BE DEPENDANT ON THE EXISTING STRUCTURE.

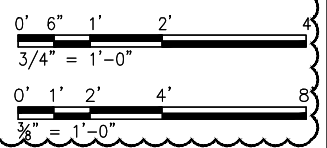
KEYED NOTES:

- L1 POST AT ALL CORNERS OF ELEVATOR SHAFT.
- L2 AND L3 HORIZONTAL BRACE. COORDINATE BOTTOM OF BRACE WITH DOOR OPENING ON EAST SIDE.
- AT CONTRACTOR'S OPTION, PROVIDE SPLICE AT THIS LOCATION IN ACCORDANCE WITH A5/S200.
- L2 DIAGONAL BRACE.
- SEE ARCHITECTURAL DRAWINGS FOR DOOR OPENING SIZE AND LOCATION.
- SUPPORT BEAM.
- 1"x 3/16" GALV GRATING.
- (3)W10x22 MEZZANINE SUPPORT BEAMS AT 36" O.C. SEE S-140 FOR LAYOUT.
- PROVIDE 5/8" BENT & AT INSIDE OF ELEVATOR TOWER FRAMING W/ (12) 3/4" φ BOLTS.
- ELEVATOR SHEAVE BEAMS. FINAL LAYOUT, SIZE AND BEARING DETAILS SHALL BE PROVIDED BY THE ELEVATOR MANUFACTURER.

MEMBERS		
MARK	SHAPE	SIZE
L1	ANGLE	L8x8x3/8
L2	ANGLE	L4x4x1/4
L3	ANGLE	L4x4x1/2
H1	HOLLOW STRUCT SECT	18x6x3/8
H2	HOLLOW STRUCT SECT	12x4x3/8



A5 SPLICE DETAIL
3/4" = 1'-0"



TranSystems	USER NAME = MAC	DESIGNED KLT	REVISED A 1/20/2014
		CHECKED AB	REVISED ---
	PLOT SCALE =	DRAWN MAC	REVISED ---
	PLOT DATE = 10/28/13	CHECKED KLT	REVISED ---

**STATE OF ILLINOIS
DEPARTMENT OF TRANSPORTATION**

**PEORIA STREET STATION
ELEVATOR SHAFT SECTIONS**

SHEET NO. S-200 OF 117 SHEETS

MUN	SECTION	COUNTY	TOTAL SHEETS	SHEET NO.
2090	2013-011R	COOK	356	206
CONTRACT NO. 60W29				
ILLINOIS FED. AID PROJECT FED. AID PROJECT				