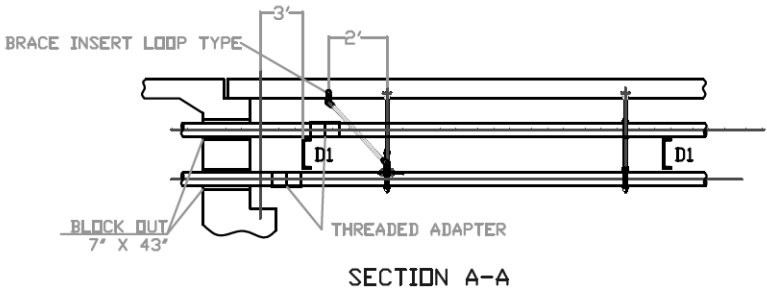
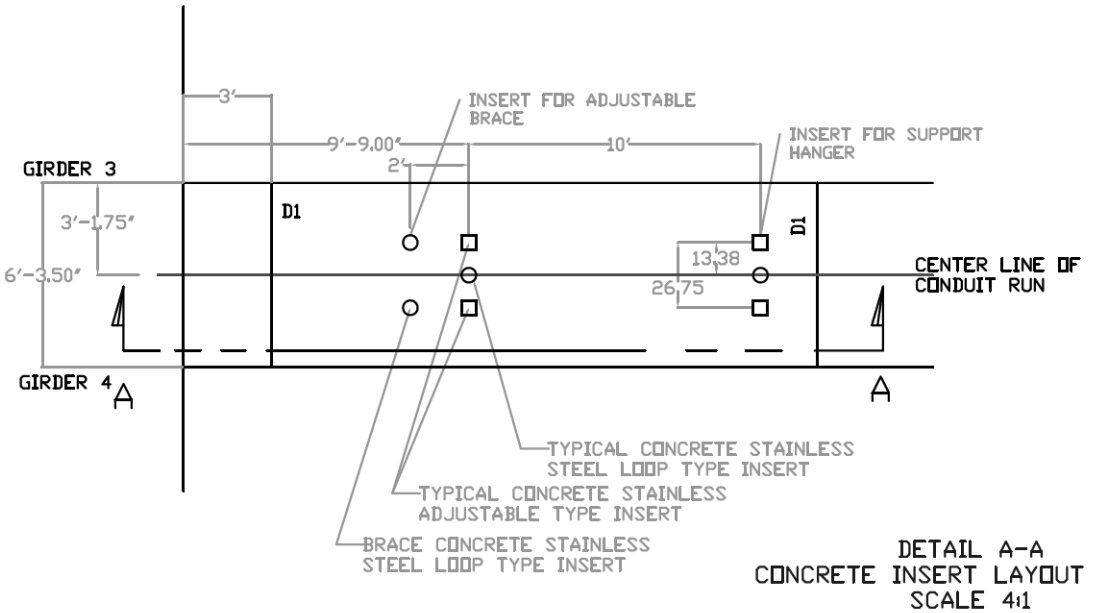
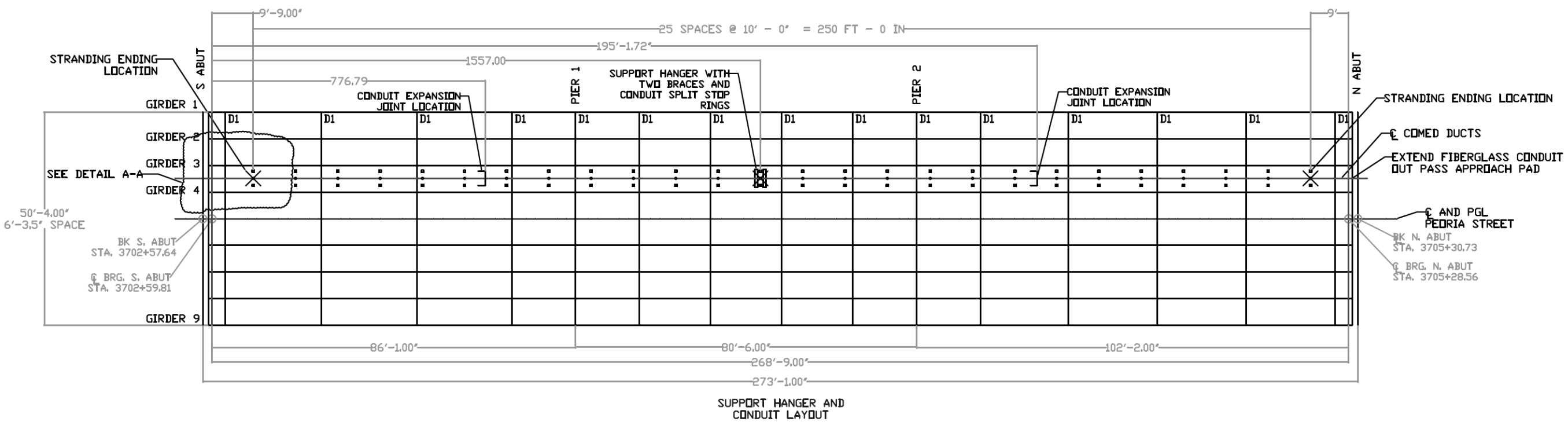


REVISIONS				
ZONE	REV	DESCRIPTION	DATE	APPROVED
	1.0	ADDENDUM A	12-18-2013	BRIAN BB



FOR INFORMATION ONLY
 WORK TO BE PERFORMED BY OTHERS
 WITH THE EXCEPTION OF PLACEMENT
 OF INSERTS INTO SUPERSTRUCTURE

This drawing is the property of Condux International, Inc. and the information thereon is to be treated as confidential. It is not to be used, copied or disclosed to outside parties without our written consent.

Note:
 ALL MEASUREMENTS ARE IN INCHES UNLESS NOTED OTHERWISE

DRAWING APPROVAL
 I _____
 APPROVE THIS DRAWING FOR MANUFACTURING
 DATE: _____

CONDUIT SUPPORT AND CONDUIT LAYOUT		CONDUX INTERNATIONAL, INC. MANKATO MN PH. 800-533-2077		
		Project: ComEd Peoria Street Bridge over F.A.I. 290 Eisenhower Expressway, Cook County Illinois		
WEIGHT: 0.0 LBS EA	SIZE	FSCM NO.	DWG NO. TBA	REV
QUOTE NO. 3985214497	SCALE 1/2	DATE: 10-03-2013	SHEET 184 OF 356	