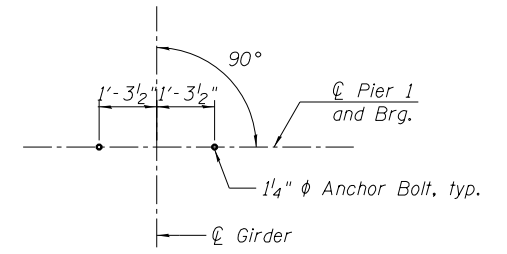
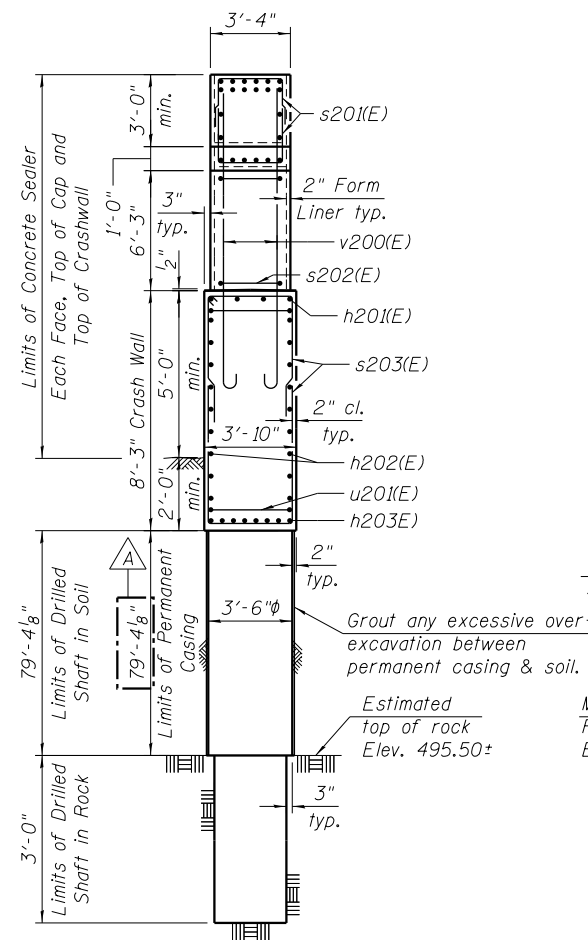


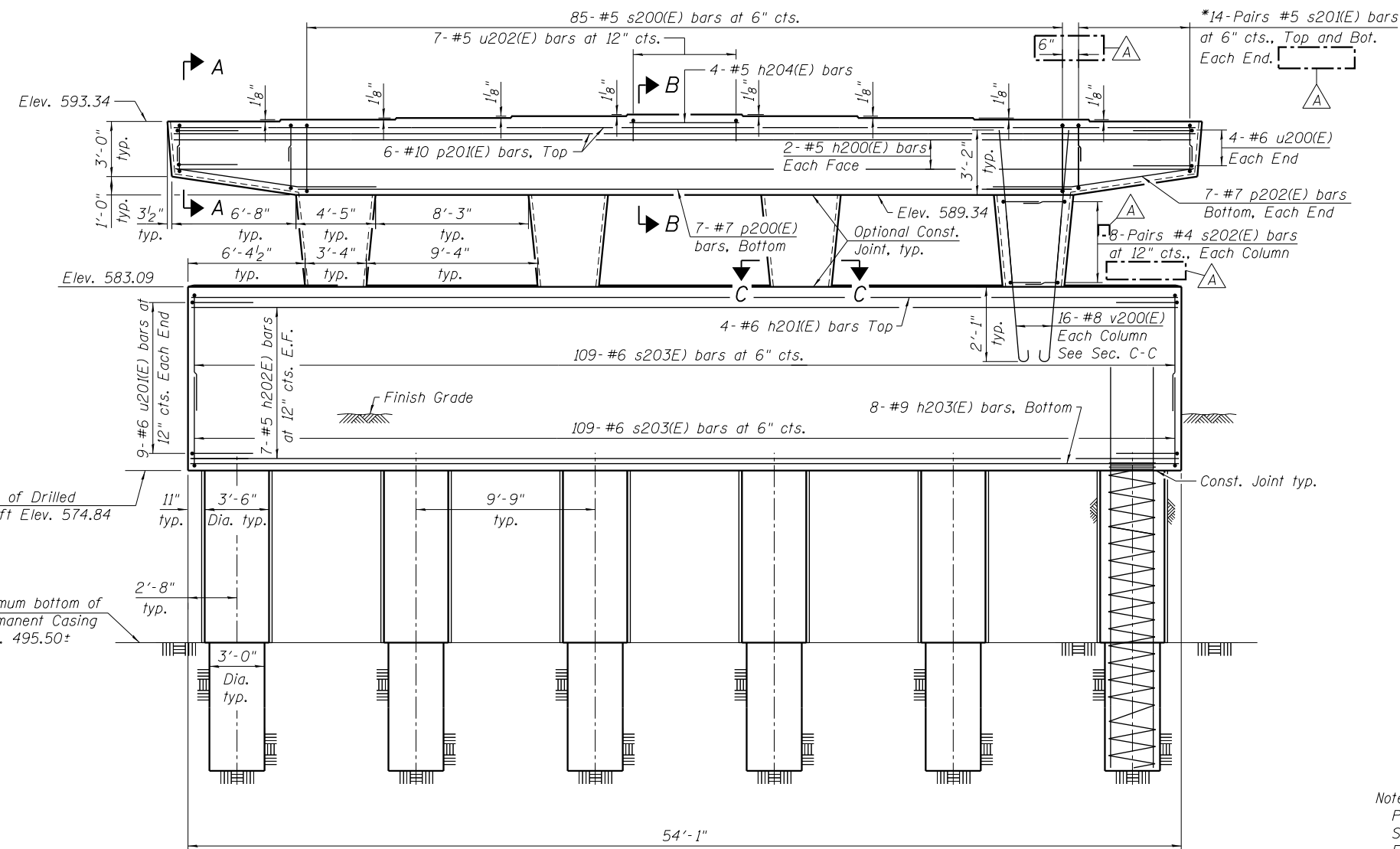
TOP PLAN



ANCHOR BOLT LAYOUT



END VIEW



ELEVATION  
(Looking North)

\* Cut vertical legs of bar to fit. Min. lap is 2'-7" for #5 bars.

TOP OF SEAT ELEVATION

Girder No.	Seat Elevation
1	593.34
2	593.44
3	593.53
4	593.63
5	593.72
6	593.63
7	593.53
8	593.44
9	593.34

Notes:  
 Pour steps monolithically with cap.  
 Space reinforcement in cap to miss anchor bolts.  
 For Sections A-A, B-B, and C-C, Drilled Shaft Details and Bill of Material, see sheet 45 of 55.

12:49:10 PM 01/16/17 08-60W29-5044-Pier1\_P&E.dgn



USER NAME = jrmickow	DESIGNED JRM	REVISED A 12/18/2013 JRM/KAH
PLOT SCALE = 8x0.0009 'x' / in.	CHECKED KAH	REVISED
PLOT DATE = 1/8/2014	DRAWN RLS	REVISED
	CHECKED KAH	REVISED

STATE OF ILLINOIS  
DEPARTMENT OF TRANSPORTATION

PIER 1 PLAN AND ELEVATION  
STRUCTURE NO. 016-1708

SHEET NO. 44 OF 55 SHEETS

MUN 2090	SECTION 2013-011R	COUNTY COOK	TOTAL SHEETS 356	SHEET NO. 176
CONTRACT NO. 60W29			ILLINOIS FED. AID PROJECT	