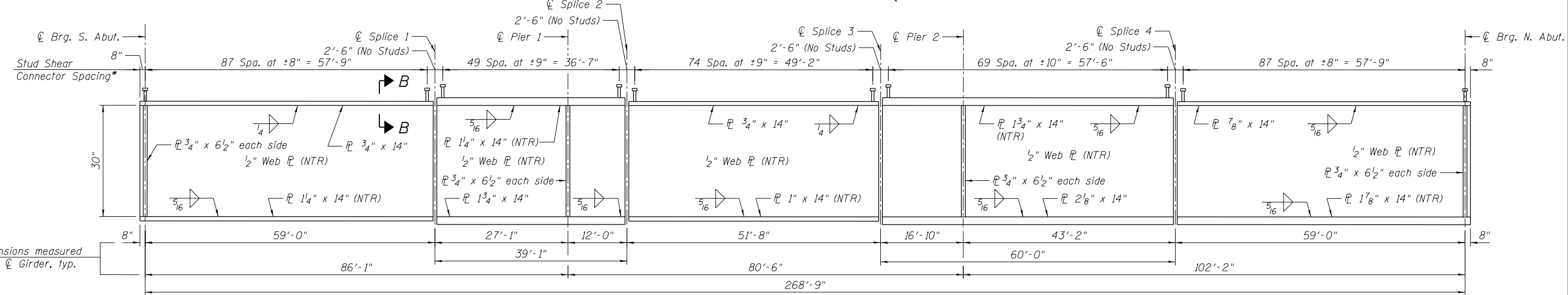


FRAMING PLAN

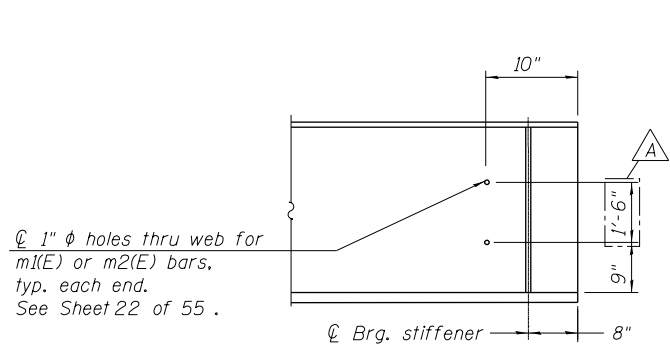


GIRDER ELEVATION

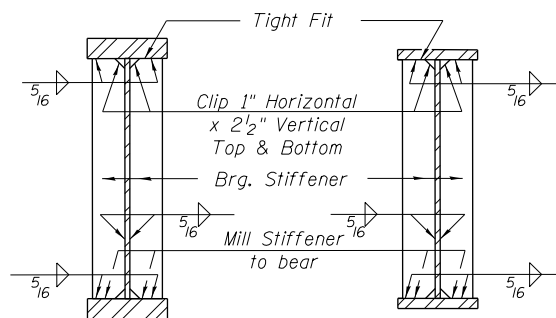
* Stud Shear connector spacing is for girder 5 only. See Sheet 16 of 55 for Section B-B. See Sheet 15 of 55 for stud shear connector configuration for all other girders.

TOP OF WEB ELEVATIONS
(For fabrication use only)

Girder	℄ Brg. S. Abut.	℄ Splice 1	℄ Brg. Pier 1	℄ Splice 2	℄ Splice 3	℄ Brg. Pier 2	℄ Splice 4	℄ Brg. N. Abut.
1	595.66	596.32	596.44	596.50	596.92	597.20	597.94	596.81
2	595.76	596.41	596.54	596.59	597.01	597.30	598.04	596.90
3	595.85	596.51	596.63	596.69	597.10	597.39	598.13	596.99
4	595.95	596.60	596.72	596.78	597.20	597.49	598.23	597.09
5	596.04	596.69	596.82	596.87	597.29	597.58	598.32	597.18
6	595.95	596.60	596.72	596.78	597.20	597.49	598.23	597.09
7	595.85	596.51	596.63	596.69	597.10	597.39	598.13	596.99
8	595.76	596.41	596.54	596.59	597.01	597.30	598.04	596.90
9	595.66	596.32	596.44	596.50	596.92	597.20	597.94	596.81



END OF BEAM ELEVATION



SECTION AT PIER

SECTION AT ABUTMENT

Notes:
 All plates of the girders, including bearing stiffeners and splice plates, shall be AASHTO M 270, Grade 50.
 All diaphragms, angles, fill plates and connecting plates may be AASHTO M270, Grade 36.
 Load carrying components designated "NTR" shall conform to the Impact Testing Requirement, Zone 2.
 All diaphragms shall be installed as steel is erected and secured with erection pins and bolts. Individual diaphragms at supports may be temporarily disconnected to install bearing anchor rods.
 For diaphragm details, see Sheet 33 of 55.
 All structural steel shall be hot dip galvanized. Cost included with Furnishing and Erecting Structural Steel.
 For notes on galvanized steel, see Sheet 2 of 55.
 For Bridge Mounted Sign Structure locations and details, See Roadway Plans.

10:32:25 AM 0161708-60W29-5032-FramePlan.dgn



USER NAME = BAWItoft	DESIGNED WJC	REVISED 12/18/2013 WJC/DL
PLOT SCALE = 21:4.0024 ' / in.	CHECKED DL	REVISED
PLOT DATE = 12/19/2013	DRAWN MTS	REVISED
	CHECKED DL	REVISED

STATE OF ILLINOIS
DEPARTMENT OF TRANSPORTATION

FRAMING PLAN
STRUCTURE NO. 016-1708
SHEET NO. 32 OF 55 SHEETS

MUN	SECTION	COUNTY	TOTAL SHEETS	SHEET NO.
2090	2013-011R	COOK	356	164
CONTRACT NO. 60W29				

ILLINOIS FED. AID PROJECT