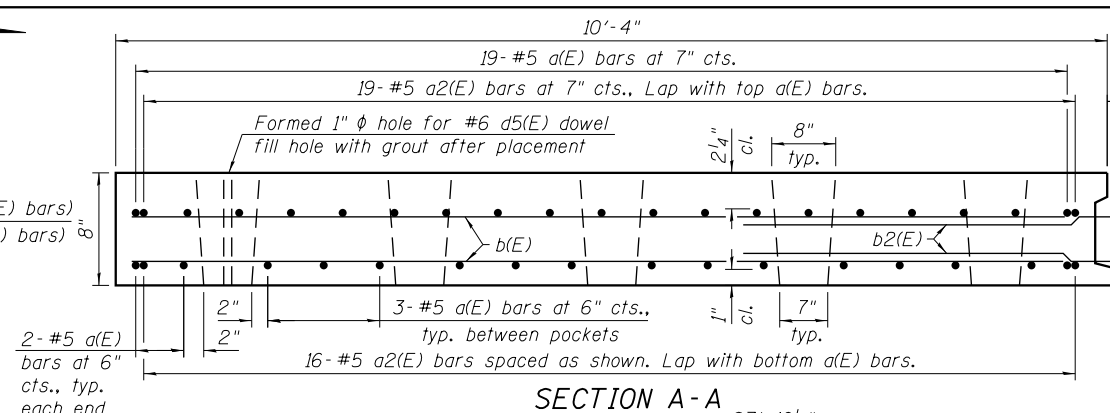
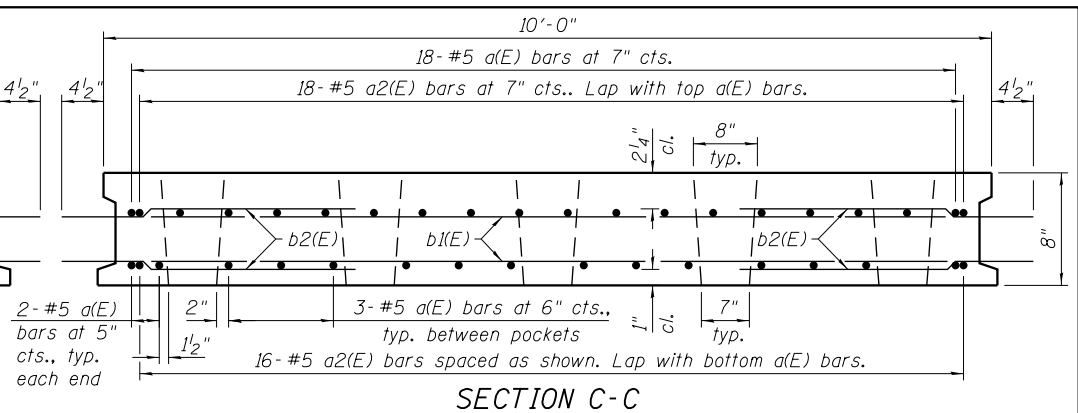


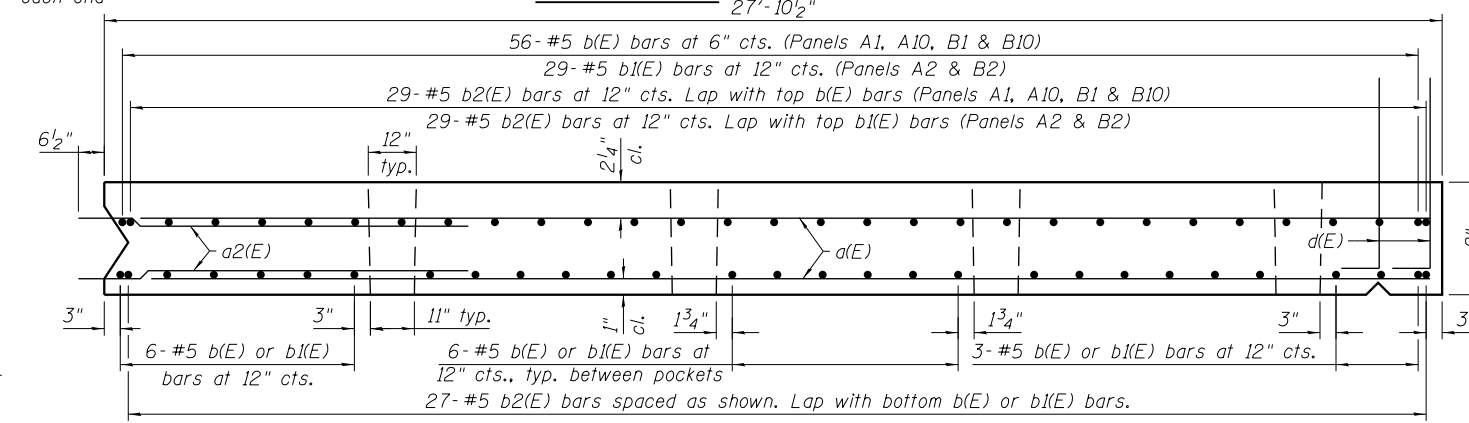
**REINFORCING PLAN - DECK PANEL B6**  
(1 required)



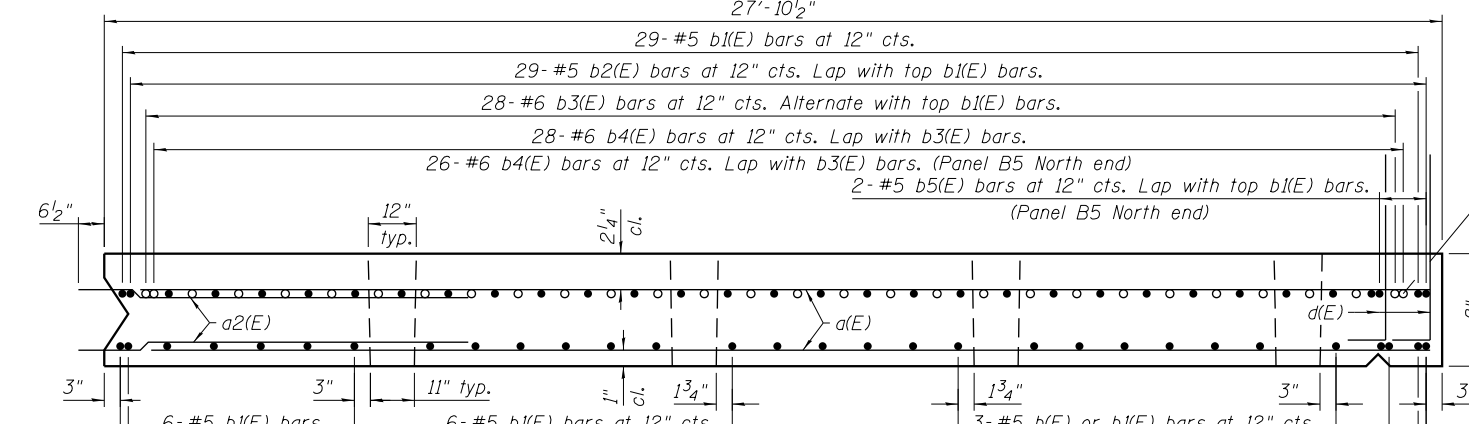
**SECTION A-A**  
27'-10 1/2"



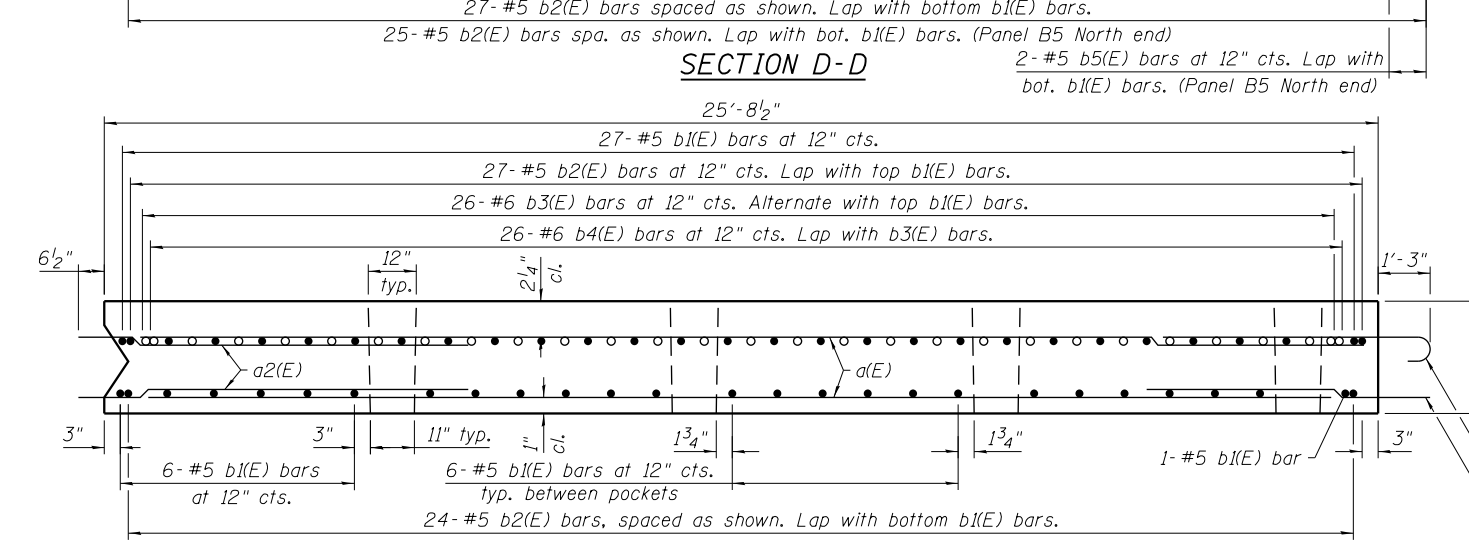
**SECTION C-C**



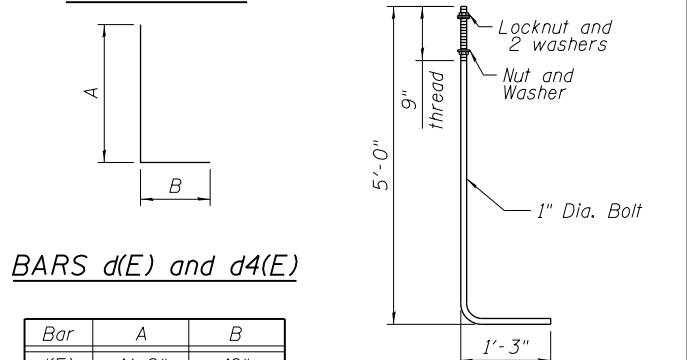
**SECTION B-B**  
27'-10 1/2"



**SECTION D-D**



**SECTION E-E**



**ANCHOR ROD**

Cost of anchor rods is included with Precast Concrete Deck Panels. (ASTM F 1554 Grade 105) Full length hot dip galvanized

**BARS d(E) and d4(E)**

Bar	A	B
d(E)	4'-2"	10"
d4(E)	4'-2"	2'-0"

**BAR a4(E)**

1- #6 b6(E) bar. Alternate with b5(E) bars. Lap with top b1(E) bar. (Panel B5 North end)

**\*BILL OF MATERIAL**

Bar	No.	Size	Length	Shape
a(E)	1738	#5	27'-6"	—
a1(E)	924	#5	6'-6"	—
a2(E)	1738	#5	4'-0"	—
a3(E)	34	#5	25'-4"	—
a4(E)	18	#5	5'-3"	C
a5(E)	16	#5	5'-4"	—
a6(E)	12	#5	4'-1"	—
a7(E)	12	#5	1'-6"	—
a8(E)	4	#5	1'-1"	—
b(E)	332	#5	10'-0"	—
b1(E)	2684	#5	9'-8"	—
b2(E)	2892	#5	3'-10"	—
b3(E)	726	#6	9'-8"	—
b4(E)	1336	#6	4'-6"	—
b5(E)	4	#5	6'-10"	—
b6(E)	1	#6	8'-0"	—
b7(E)	16	#5	2'-2"	—
d(E)	1144	#5	5'-0"	L
d4(E)	24	#6	6'-2"	L
* Reinforcement Bars, Epoxy Coated			Pound	132,430
* Ultra High Performance Concrete			Cu. Yd.	25.1

\* For information only

Notes:  
Provide a 3/4" min. gap between adjacent b2(E) or b4(E) dowels within UHPC joints. See Detail B on sheet 16 of 55.

11:03:39 PM 0161708-60W29-5020-Deck\_PnlDet5.dgn



USER NAME = BAWItoft	DESIGNED JRM	REVISED
	CHECKED WJC	REVISED
PLOT SCALE = 4x0.0000 '1' / in.	DRAWN RLS	REVISED
PLOT DATE = 10/28/2013	CHECKED DL	REVISED

**STATE OF ILLINOIS**  
**DEPARTMENT OF TRANSPORTATION**

**PRECAST DECK PANEL DETAILS 5**  
**STRUCTURE NO. 016-1708**

SHEET NO. 20 OF 55 SHEETS

MUN	SECTION	COUNTY	TOTAL SHEETS	SHEET NO.
2090	2013-011R	COOK	356	152
CONTRACT NO.			60W29	
ILLINOIS FED. AID PROJECT				