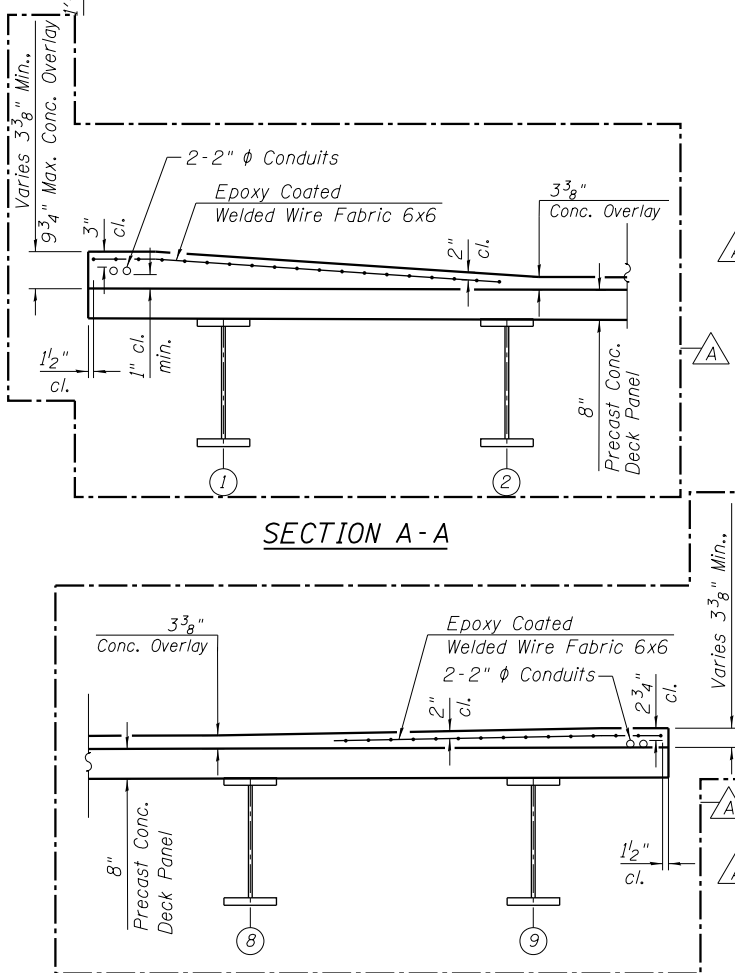


FACE OF WEST PARAPET

PGL & C ROADWAY

FACE OF EAST PARAPET



Location	Station	Offset	Theoretical Grade Elevations	Overlay Thickness	Location	Station	Offset	Theoretical Grade Elevations	Overlay Thickness	Location	Station	Offset	Theoretical Grade Elevations	Overlay Thickness
Bk. S. Abut.	3702+57.64	-26.67	596.63	2.25	Bk. S. Abut.	3702+57.64	0.00	597.03	2.25	Bk. S. Abut.	3702+57.64	26.67	596.63	2.25
CL Brg. S. Abut.	3702+59.81	-26.67	596.65	2.25	CL Brg. S. Abut.	3702+59.81	0.00	597.05	2.25	CL Brg. S. Abut.	3702+59.81	26.67	596.65	2.25
1A	3702+69.81	-26.67	596.75	2.25	1A	3702+69.81	0.00	597.15	2.25	1A	3702+69.81	26.67	596.75	2.25
1B	3702+79.81	-26.67	596.85	2.25	1B	3702+79.81	0.00	597.25	2.25	1B	3702+79.81	26.67	596.85	2.25
1C	3702+89.81	-26.67	596.94	2.25	1C	3702+89.81	0.00	597.34	2.25	1C	3702+89.81	26.67	596.94	2.25
1D	3702+99.81	-26.67	597.04	2.25	1D	3702+99.81	0.00	597.44	2.25	1D	3702+99.81	26.67	597.04	2.25
1E	3703+09.81	-26.67	597.14	2.25	1E	3703+09.81	0.00	597.54	2.25	1E	3703+09.81	26.67	597.14	2.25
1F	3703+19.81	-26.67	597.24	2.25	1F	3703+19.81	0.00	597.64	2.25	1F	3703+19.81	26.67	597.24	2.25
1G	3703+29.81	-26.67	597.33	2.25	1G	3703+29.81	0.00	597.73	2.25	1G	3703+29.81	26.67	597.33	2.25
1H	3703+39.81	-26.67	597.43	2.25	1H	3703+39.81	0.00	597.83	2.25	1H	3703+39.81	26.67	597.43	2.25
CL Brg. Pier 1	3703+45.89	-26.67	597.51	2.46	CL Brg. Pier 1	3703+45.89	0.00	597.89	2.25	CL Brg. Pier 1	3703+45.89	26.67	597.49	2.29
2A	3703+55.89	-26.67	597.85	5.35	2A	3703+55.89	0.00	597.99	2.25	2A	3703+55.89	26.67	597.68	3.37
2B	3703+65.89	-26.67	598.31	9.81	2B	3703+65.89	0.00	598.08	2.25	2B	3703+65.89	26.67	597.91	5.16
2C	3703+75.89	-26.67	598.31	8.61	2C	3703+75.89	0.00	598.18	2.25	2C	3703+75.89	26.67	597.88	3.49
2D	3703+85.89	-26.67	598.31	7.41	2D	3703+85.89	0.00	598.28	2.25	2D	3703+85.89	26.67	597.90	2.43
2E	3703+95.89	-26.67	598.31	6.21	2E	3703+95.89	0.00	598.38	2.25	2E	3703+95.89	26.67	597.98	2.25
2F	3704+05.89	-26.67	598.48	7.22	2F	3704+05.89	0.00	598.47	2.25	2F	3704+05.89	26.67	598.07	2.25
2G	3704+15.89	-26.67	598.55	6.78	2G	3704+15.89	0.00	598.57	2.25	2G	3704+15.89	26.67	598.17	2.25
CL Brg. Pier 2	3704+26.39	-26.67	598.27	2.25	CL Brg. Pier 2	3704+26.39	0.00	598.67	2.25	CL Brg. Pier 2	3704+26.39	26.67	598.27	2.25
3A	3704+36.39	-26.67	598.37	2.25	3A	3704+36.39	0.00	598.77	2.25	3A	3704+36.39	26.67	598.37	2.25
3B	3704+46.39	-26.67	598.47	2.25	3B	3704+46.39	0.00	598.87	2.25	3B	3704+46.39	26.67	598.47	2.25
3C	3704+56.39	-26.67	598.57	2.25	3C	3704+56.39	0.00	598.97	2.25	3C	3704+56.39	26.67	598.57	2.25
3D	3704+66.39	-26.67	598.66	2.25	3D	3704+66.39	0.00	599.06	2.25	3D	3704+66.39	26.67	598.66	2.25
3E	3704+76.39	-26.67	598.71	2.25	3E	3704+76.39	0.00	599.11	2.25	3E	3704+76.39	26.67	598.71	2.25
3F	3704+86.39	-26.67	598.69	2.25	3F	3704+86.39	0.00	599.09	2.25	3F	3704+86.39	26.67	598.69	2.25
3G	3704+96.39	-26.67	598.60	2.25	3G	3704+96.39	0.00	599.00	2.25	3G	3704+96.39	26.67	598.60	2.25
3H	3705+06.39	-26.67	598.43	2.25	3H	3705+06.39	0.00	598.83	2.25	3H	3705+06.39	26.67	598.43	2.25
3I	3705+16.39	-26.67	598.19	2.25	3I	3705+16.39	0.00	598.59	2.25	3I	3705+16.39	26.67	598.19	2.25
CL Brg. N. Abut.	3705+28.56	-26.67	597.80	2.25	CL Brg. N. Abut.	3705+28.56	0.00	598.20	2.25	CL Brg. N. Abut.	3705+28.56	26.67	597.80	2.25
Bk. N. Abut.	3705+30.73	-26.67	597.44	2.25	Bk. N. Abut.	3705+30.73	0.00	598.12	2.25	Bk. N. Abut.	3705+30.73	26.67	597.44	2.25

LEGEND
 Bridge Deck Latex Concrete Overlay, depth greater than 3 1/2"

Notes:
 For Top of Slab Elevations for precast concrete deck panels see Sheets 10 through 12 of 55.
 For scoring pattern of Bridge Deck Concrete Overlay, 2 1/4 Inches see Sheets 91 and 92 of 356.
 Score shall be the width and depth of a bridge deck groove, as specified in Article 503.16(a)(3)b.
 Bridge Deck Latex Concrete Overlay depth varies from 2 1/4" to 9 3/4". Additional concrete shall be included in the cost of Bridge Deck Latex Concrete Overlay, 2 1/4 Inches. Bridge Deck Latex Concrete Overlay greater than 3 1/2" shall be reinforced with epoxy coated Welded Wire Fabric 6x6.

BILL OF MATERIAL

Item	Unit	Quantity
Bridge Deck Latex Concrete Overlay, 2 1/4 Inches	Sq. Yd.	1614
Welded Wire Fabric 6x6	Sq. Yd.	66

10/23/10 AM 0161708-60W29-5014-TopSlab_4.dgn



USER NAME = kahastings	DESIGNED KAH	REVISED A 12/18/2013 KAH/WJC
PLOT SCALE = 21:4.0024 " / in.	CHECKED WJC	REVISED
PLOT DATE = 1/10/2014	DRAWN RLS	REVISED
	CHECKED WJC	REVISED

STATE OF ILLINOIS
DEPARTMENT OF TRANSPORTATION

BRIDGE DECK OVERLAY
STRUCTURE NO. 016-1708

SHEET NO. 14 OF 55 SHEETS

MUN 2090	SECTION 2013-011R	COUNTY COOK	TOTAL SHEETS 356	SHEET NO. 146
CONTRACT NO. 60W29			ILLINOIS FED. AID PROJECT FED. AID PROJECT	