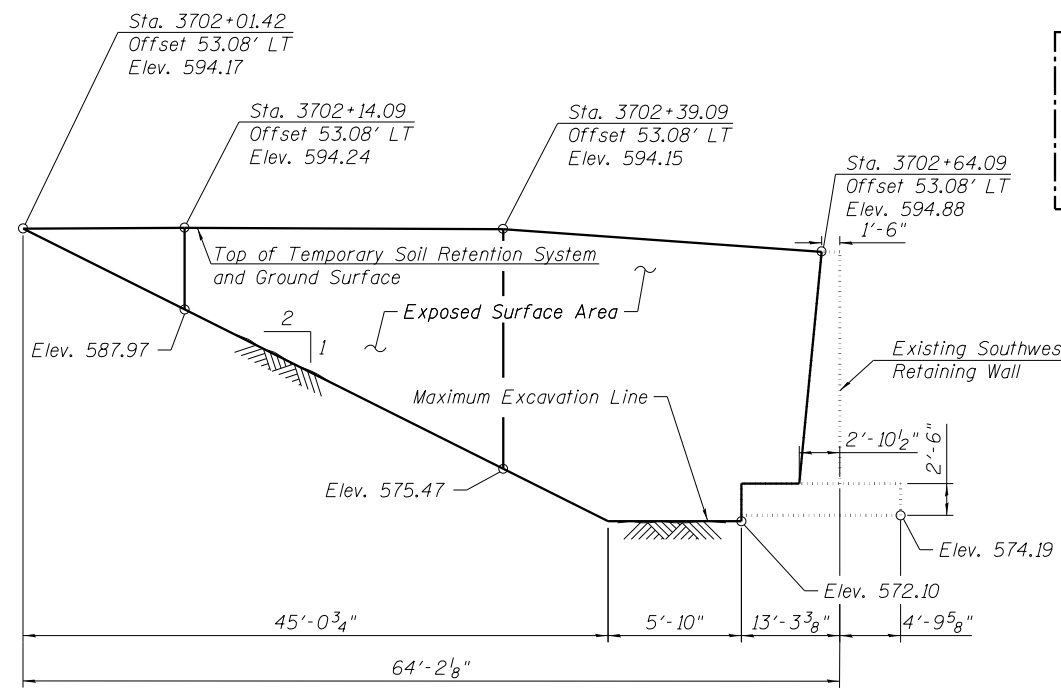
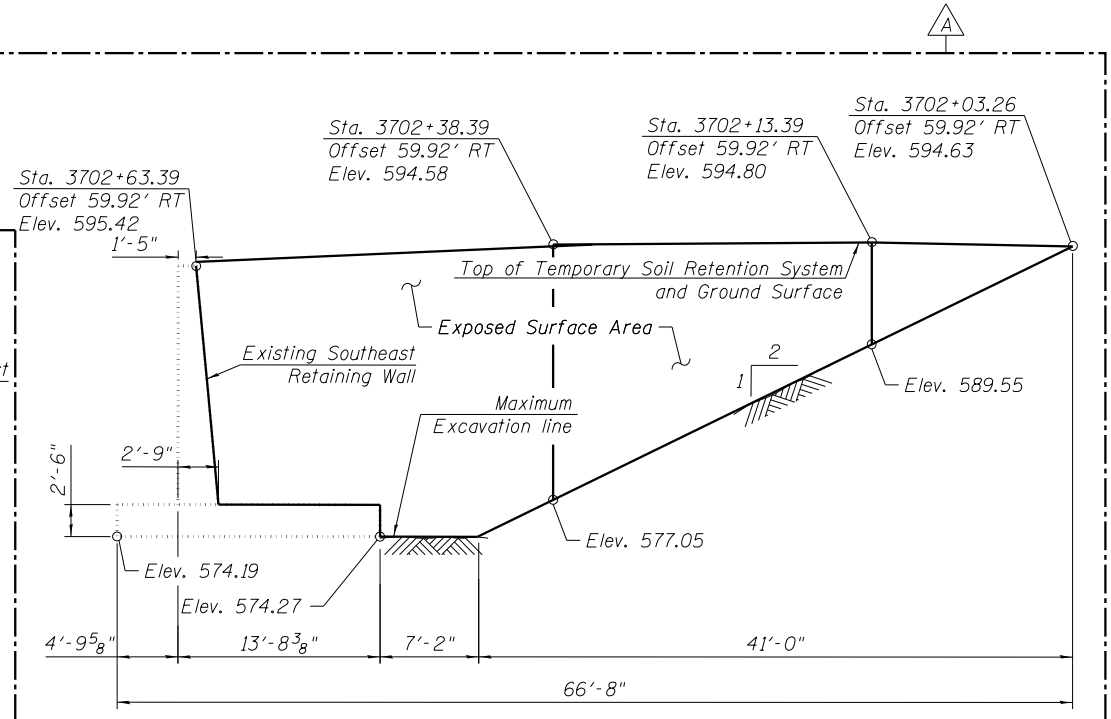


**FOUNDATION LAYOUT**



**TEMPORARY SOIL RETENTION SYSTEM NO. 1**  
(At South Abutment)



**TEMPORARY SOIL RETENTION SYSTEM NO. 2**  
(At South Abutment)

**LEGEND:**

- Combined Sewer →→→→→
- Storm Sewer →→→→→
- ITS Fiber Optic — FO — FO —
- Chain Link Fence, 4' — x — x — x — x —
- Light Pole ⦿
- Soil Boring ⊕

**Notes:**  
 Driving piles and temporary sheet piling is not allowed.  
 A cantilevered sheet piling design does not appear feasible and additional members or other retention systems may be necessary. The Contractor shall submit a temporary soil retention system design including plan details and calculations for review and acceptance by the Engineer.  
 See the Utility Plan on sheet 3 of 55 for existing utilities. The maximum allowable excavation slope is 1:2 (V:H).  
 For additional Temporary Soil Retention System details see sheets 5 and 6 of 55.  
 For Soil Retention System details see sheet 6 of 55.  
 The portion of Temporary Soil Retention No. 6 in conflict with the existing siphon cannot be constructed until the temporary siphon bypass is constructed. For Siphon Plans see Sheet 71 thru 76 of 356.  
 For Chain Link Fence quantity, see Sheet 6 of 356.

**BILL OF MATERIAL**

Item	Unit	Quantity
Temporary Soil Retention System	Sq. Ft.	1608

11:27:40 AM 0161708-60W29-5004-SubStruct-Foundations.dgn



USER NAME = kahastings	DESIGNED JRM/KAH	REVISED Δ 12/18/2013 KAH
PLOT SCALE = 40:0.0046 ' / in.	CHECKED - MDS	REVISED —
PLOT DATE = 1/10/2014	DRAWN - RLS	REVISED —
	CHECKED - MDS	REVISED —

**STATE OF ILLINOIS**  
**DEPARTMENT OF TRANSPORTATION**

**FOUNDATION LAYOUT**  
**STRUCTURE NO. 016-1708**

SHEET NO. 4 OF 55 SHEETS

MUN	SECTION	COUNTY	TOTAL SHEETS	SHEET NO.
2090	2013-011R	COOK	356	136
CONTRACT NO.			60W29	

ILLINOIS FED. AID PROJECT