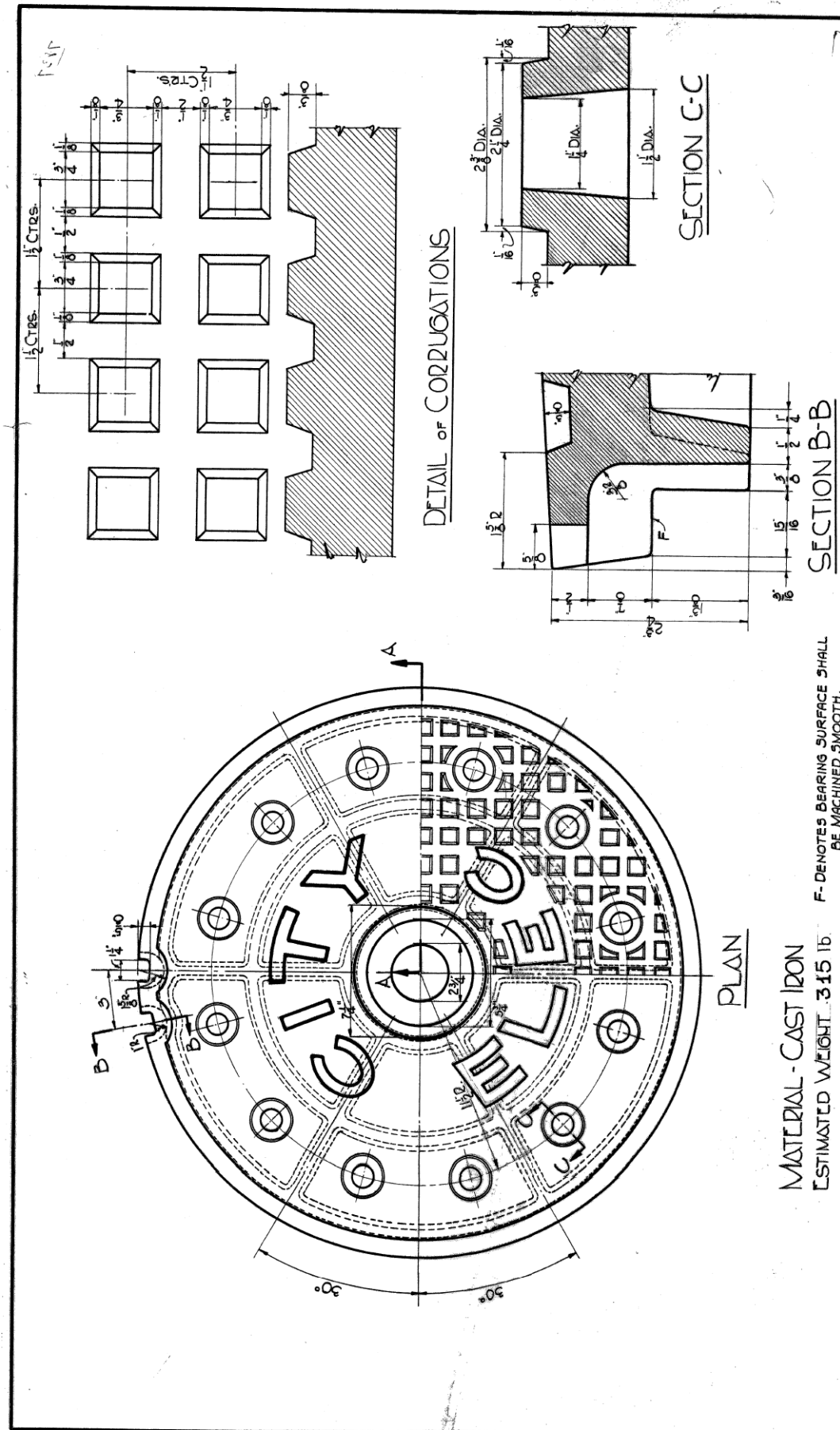
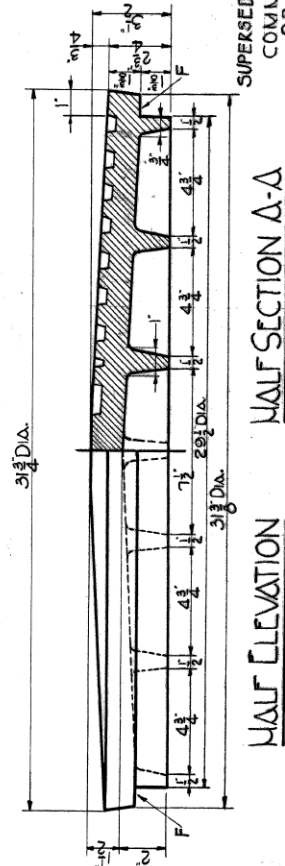


FILE PATH = p:\388035\pmt\aeconom\line\local\p\aeconom\Documents\01_Americas\Transportation\60269938_Circle\Phase_1\1000_CND\016_Electrical\Sheets\60W29_Contract\160W29-sht-Light-19



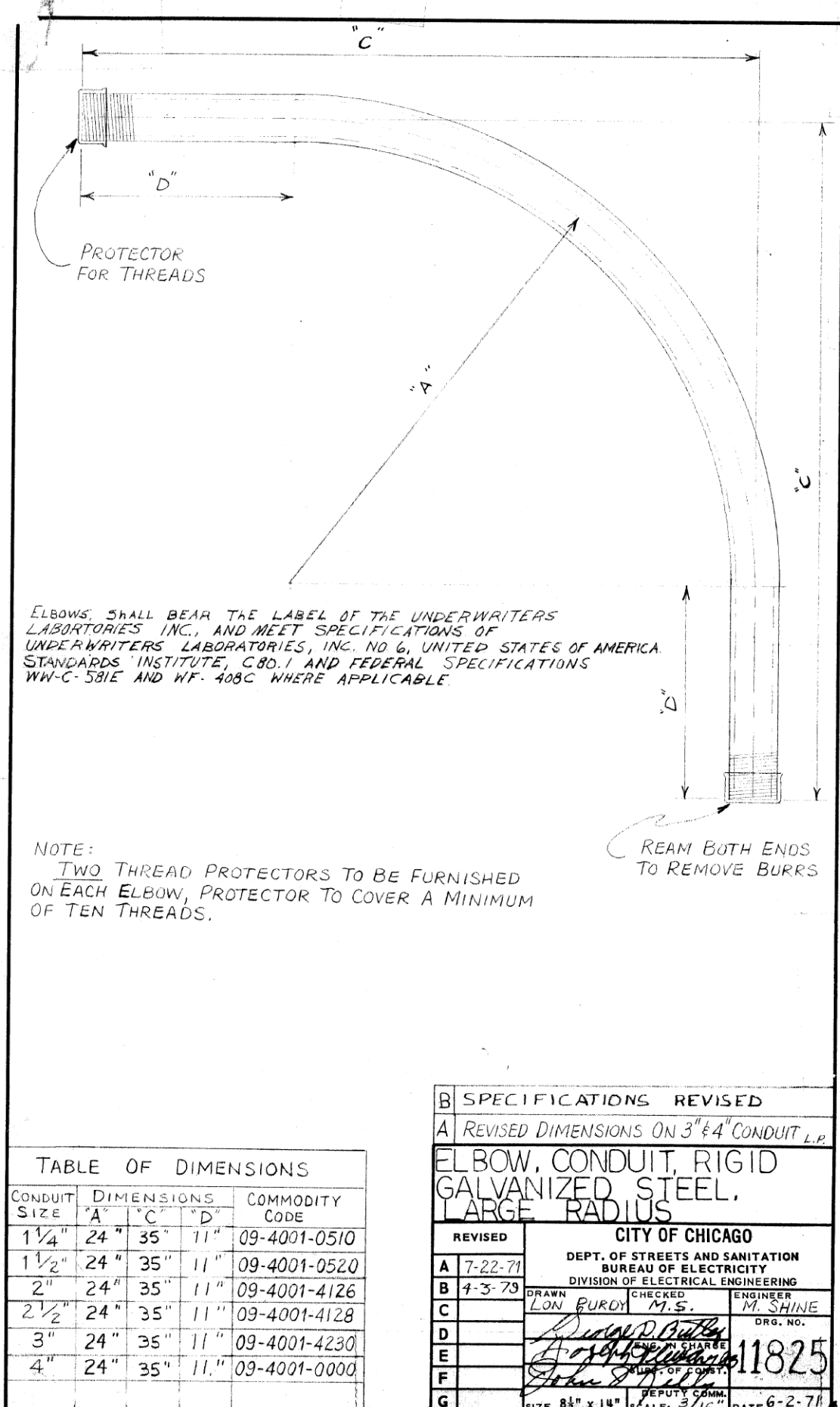
MATERIAL - CAST IRON
ESTIMATED WEIGHT 315 lb

F - DENOTES BEARING SURFACE SHALL BE MACHINED SMOOTH.



SUPERSEDES DRG. 7223 DATED 6-29-10
COMMODITY CODE
02-4574-5630

WEIGHT REVISED	
IDENTIFICATION LETTERS ON COVER CHANGED	
30" CIRCULAR STREET MANHOLE COVER	
REVISED	CITY OF CHICAGO
A 12-7-53	DEPT. OF STREETS AND SANITATION
B 9-7-79	DIVISION OF ELECTRICAL ENGINEERING
C 8-9-85	M. ZOLESKI
D	W. H. HANCOCK
E	J. H. HANCOCK
F	J. H. HANCOCK
G	J. H. HANCOCK
10927	
4-3-84	



ELBOWS SHALL BEAR THE LABEL OF THE UNDERWRITERS LABORATORIES INC., AND MEET SPECIFICATIONS OF UNDERWRITERS LABORATORIES, INC. NO 6, UNITED STATES OF AMERICA. STANDARDS INSTITUTE, C80.1 AND FEDERAL SPECIFICATIONS WW-C-581E AND WF-408C WHERE APPLICABLE

NOTE:
TWO THREAD PROTECTORS TO BE FURNISHED ON EACH ELBOW, PROTECTOR TO COVER A MINIMUM OF TEN THREADS.

CONDUIT SIZE	DIMENSIONS			COMMODITY CODE
	"A"	"C"	"D"	
1 1/4"	24"	35"	11"	09-4001-0510
1 1/2"	24"	35"	11"	09-4001-0520
2"	24"	35"	11"	09-4001-4126
2 1/2"	24"	35"	11"	09-4001-4128
3"	24"	35"	11"	09-4001-4230
4"	24"	35"	11"	09-4001-0000

B	SPECIFICATIONS REVISED
A	REVISED DIMENSIONS ON 3" x 4" CONDUIT L.P.
ELBOW, CONDUIT, RIGID GALVANIZED STEEL, LARGE RADIUS	
REVISED	CITY OF CHICAGO
A 7-22-71	DEPT. OF STREETS AND SANITATION
B 4-3-79	BUREAU OF ELECTRICITY
C	DIVISION OF ELECTRICAL ENGINEERING
D	ENGINEER
E	DR. NO.
F	11825
G	DEPUTY COMM. DATE 6-2-71



D160W29-sht-Light-19
USER NAME = BAW:ort
PLOT SCALE = 2.0000' / in.
PLOT DATE = 10/28/2013

DESIGNED - WDS
DRAWN - CAM
CHECKED - WDS
DATE - 10/30/2013

REVISED -
REVISED -
REVISED -
REVISED -

STATE OF ILLINOIS
DEPARTMENT OF TRANSPORTATION

MISCELLANEOUS ELECTRICAL DETAILS

SCALE: N.T.S. SHEET 19 OF 19 SHEETS STA. TO STA.

F.A.I. R.E. SECTION COUNTY TOTAL SHEETS SHEET NO.
90/94/290 2013-011R COOK 356 129
ILLINOIS FED. AID PROJECT CONTRACT NO. 60W29