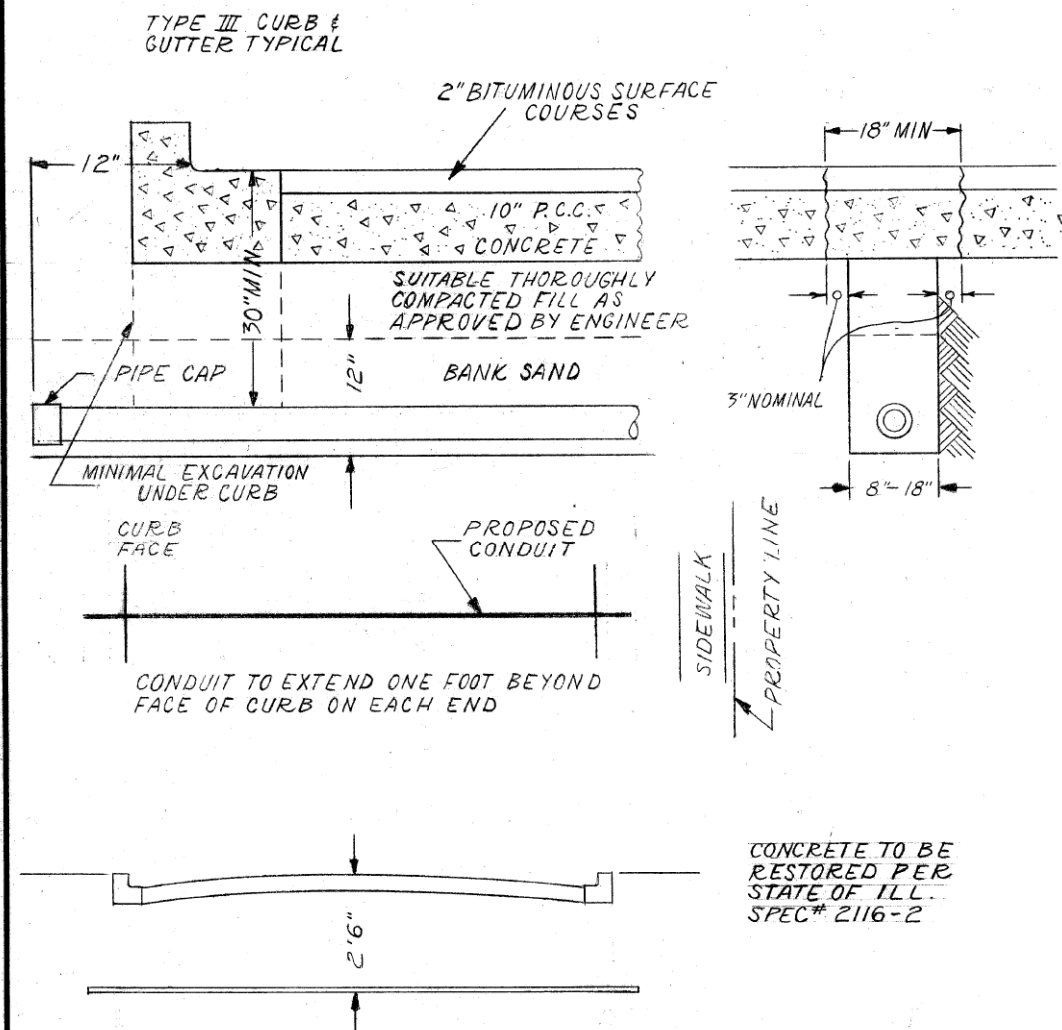
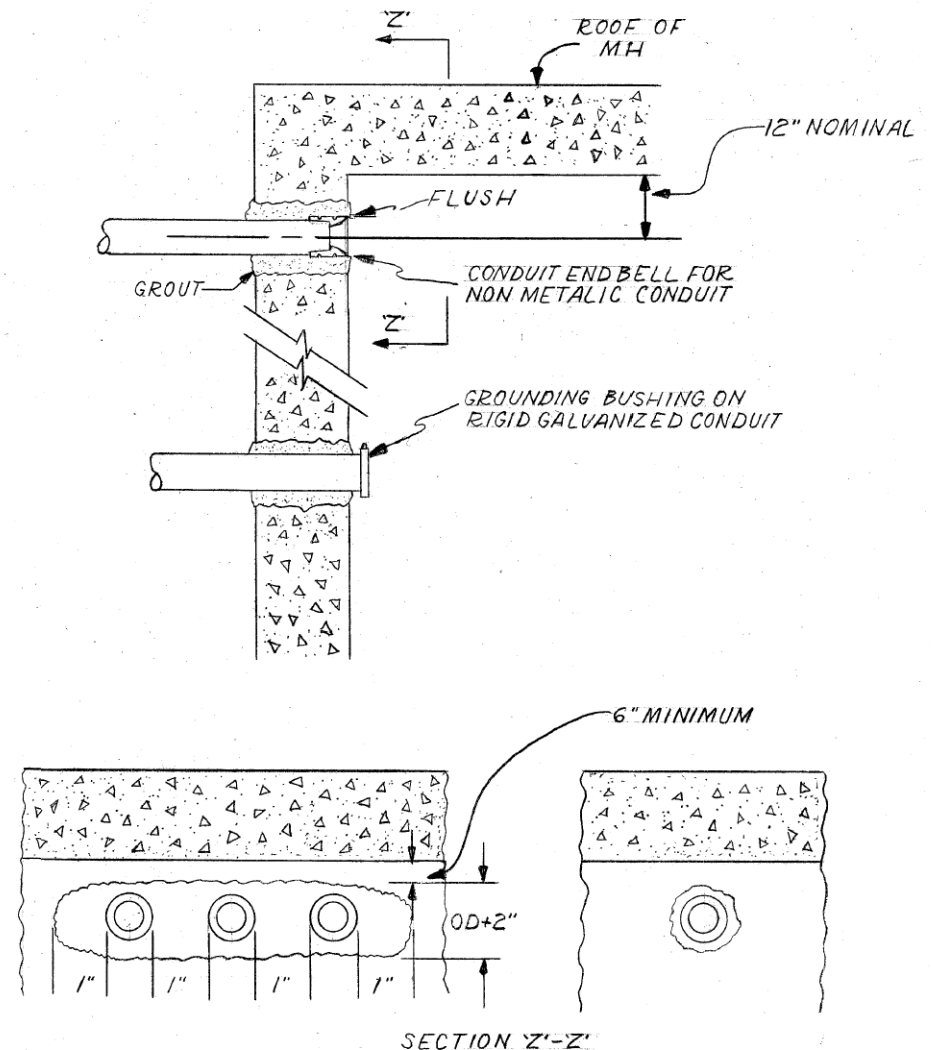


CONDUIT INSTALLATION UNDER PAVED STREET



INSTALLATION METHOD OF INSTALLING CONDUIT UNDER PAVED ROADWAY		
CITY OF CHICAGO DEPT. OF STREETS AND SANITATION BUREAU OF ELECTRICITY DIVISION OF ELECTRICAL ENGINEERING		
DRAWN A.M. JOHNSON	CHECKED R. SYCKOWSKI	ENGINEER R.L. MARTIN
 THOMAS HILDUFF ENGINEER OF ELECTRICITY		DRG. NO. 813
 CHARLES E. BUNKLEY DEPUTY COMM.		DATE 3-13-81
SIZE 8 1/2" X 14"	SCALE N.T.S.	

CONDUIT INSTALLATION THROUGH EXISTING
MANHOLE OR HANDHOLE WALL



OPENING THROUGH WALL TO BE KEPT TO MINIMUM SIZE TO ADMIT CONDUIT AND SUFFICIENT GROUT TO ASSURE SEALING WALL.

INSTALLATION METHOD OF INSTALLING CONDUIT THRU MANHOLE WALL		
CITY OF CHICAGO DEPT. OF STREETS AND SANITATION BUREAU OF ELECTRICITY DIVISION OF ELECTRICAL ENGINEERING		
DRAWN A.M. JOHNSON	CHECKED R. SYCKOWSKI	ENGINEER R.L. MARTIN
 THOMAS HILDUFF ENGINEER OF ELECTRICITY		DRG. NO. 814
 CHARLES E. BUNKLEY DEPUTY COMM.		DATE 3-13-81
SIZE 8 1/2" X 14"	SCALE N.T.S.	

FILE PATH = ...



DESIGNED - WDS
DRAWN - CAM
CHECKED - WDS
DATE - 10/30/2013

REVISIONS:
REVISED -
REVISED -
REVISED -
REVISED -

STATE OF ILLINOIS
DEPARTMENT OF TRANSPORTATION

MISCELLANEOUS ELECTRICAL DETAILS

SCALE: N.T.S. SHEET 15 OF 19 SHEETS STA. TO STA.

F.A.I. RTE. 90/94/290	SECTION 2013-011R	COUNTY COOK	TOTAL SHEETS 356	SHEET NO. 125
CONTRACT NO. 60W29				
ILLINOIS FED. AID PROJECT				