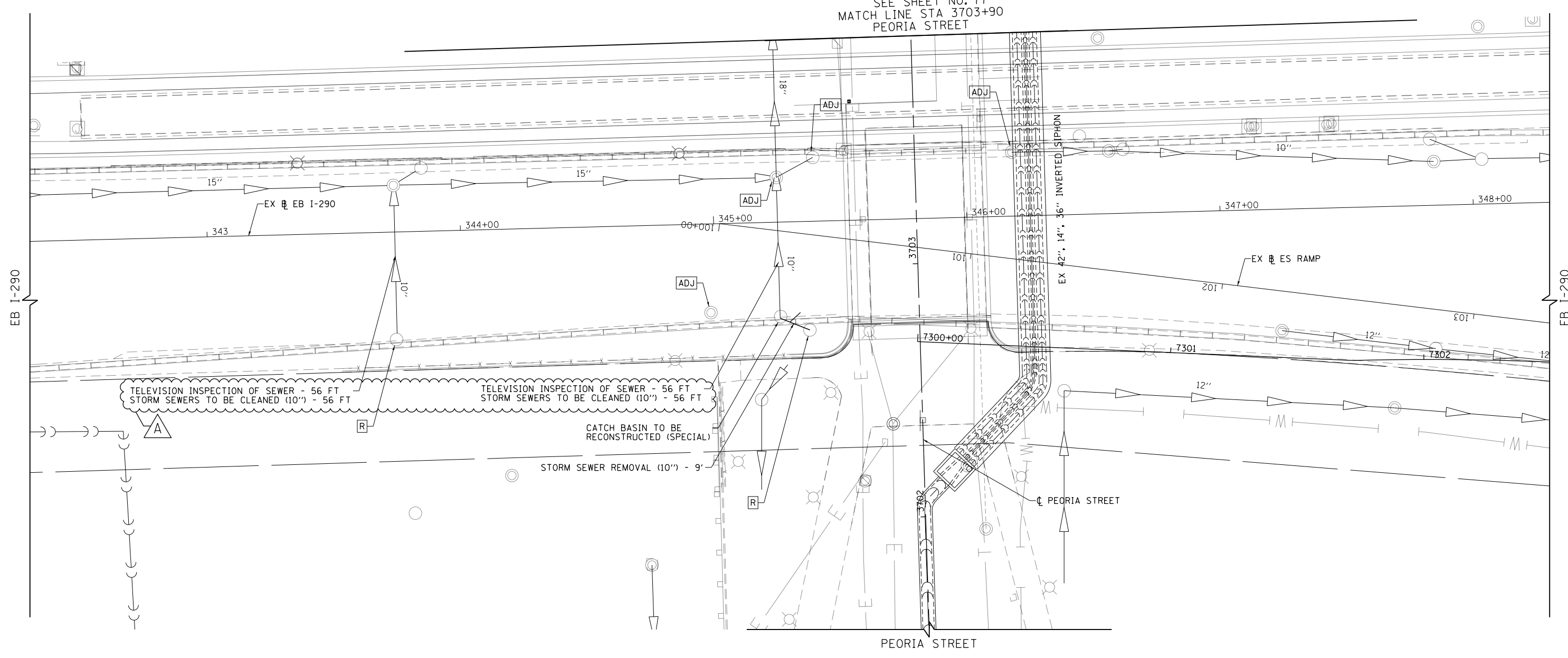


SEE SHEET NO. 77
MATCH LINE STA 3703+90
PEORIA STREET

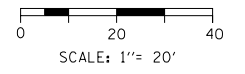


ADJUSTMENT AND REMOVAL LEGEND

- ADJ ADJUST BY CONTRACTOR
- R REMOVAL BY CONTRACTOR

NOTES:

1. ALL STATIONS AND OFFSETS ARE MEASURED FROM EX EB I-290 & RAMP ALIGNMENTS UNLESS OTHERWISE NOTED.
2. SEE SHEET 70 FOR PEORIA STREET DRAINAGE AND REMOVALS.
3. REFER TO SHEETS 28 TO 29 FOR DRAINAGE STRUCTURE AND PIPE SCHEDULES.



FILE PATH = p:\388035\pmt\lsc\com\lme\local\p\wec\m\0\Documents\01_Americas\Transportation\60269938_Circle\Phase_1\1\000_CAD\006_Roadway_Sheets\60W29_Sht-Drain-03.dgn



D:\60W29-Sht-Drain-03.dgn	DESIGNED - MNB	REVISED - A 12/18/2013
USER NAME = BAWtor1	DRAWN - BAW	REVISED -
PLOT SCALE = 40.0000' / in.	CHECKED - JWC	REVISED -
PLOT DATE = 12/19/2013	DATE - 10/30/2013	REVISED -

**STATE OF ILLINOIS
DEPARTMENT OF TRANSPORTATION**

**DRAINAGE REMOVAL PLAN
I-290 EASTBOUND**

SCALE: 1"=20' SHEET 9 OF 11 SHEETS STA. 342+30 TO STA. 348+30

F.A.I. R.E.	SECTION	COUNTY	TOTAL SHEETS	SHEET NO.
90/94/290	2013-011R	COOK	356	78
CONTRACT NO. 60W29				
ILLINOIS FED. AID PROJECT				