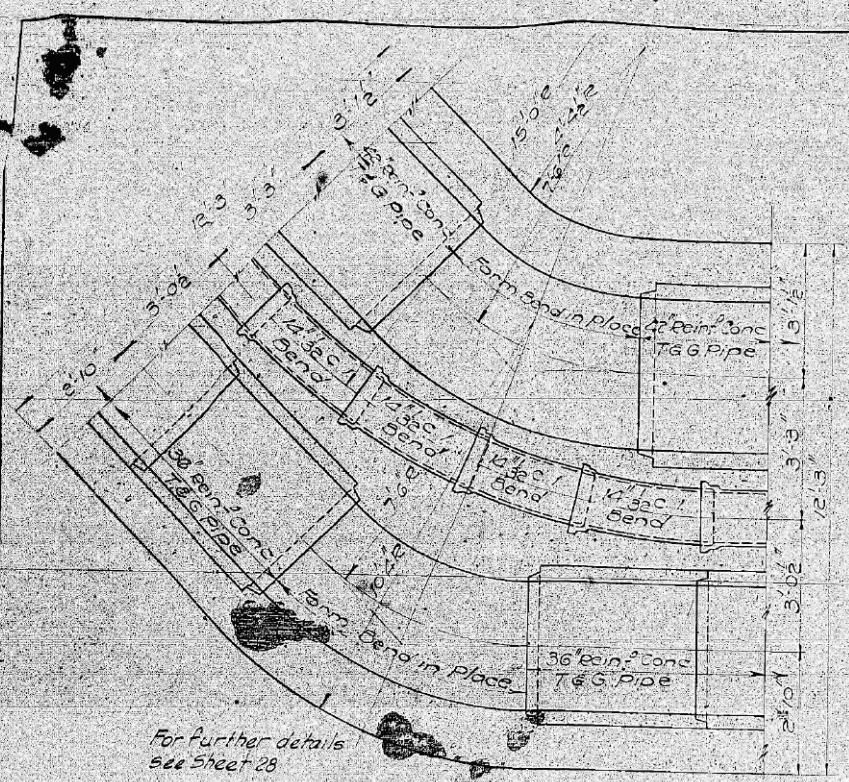
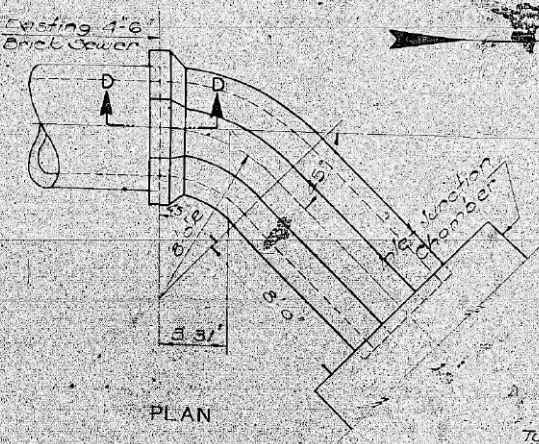


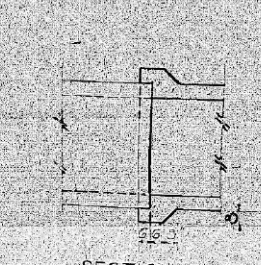
DATE	2525.1B	30	23
PROJECT	WEST ROUTE SUPERHIGHWAY		
SECTION	SECTION 2525.1B		
PEORIA STREET BRIDGE			



PLAN OF BENDS AT SOUTH END
Scale 1/4" = 1'-0"

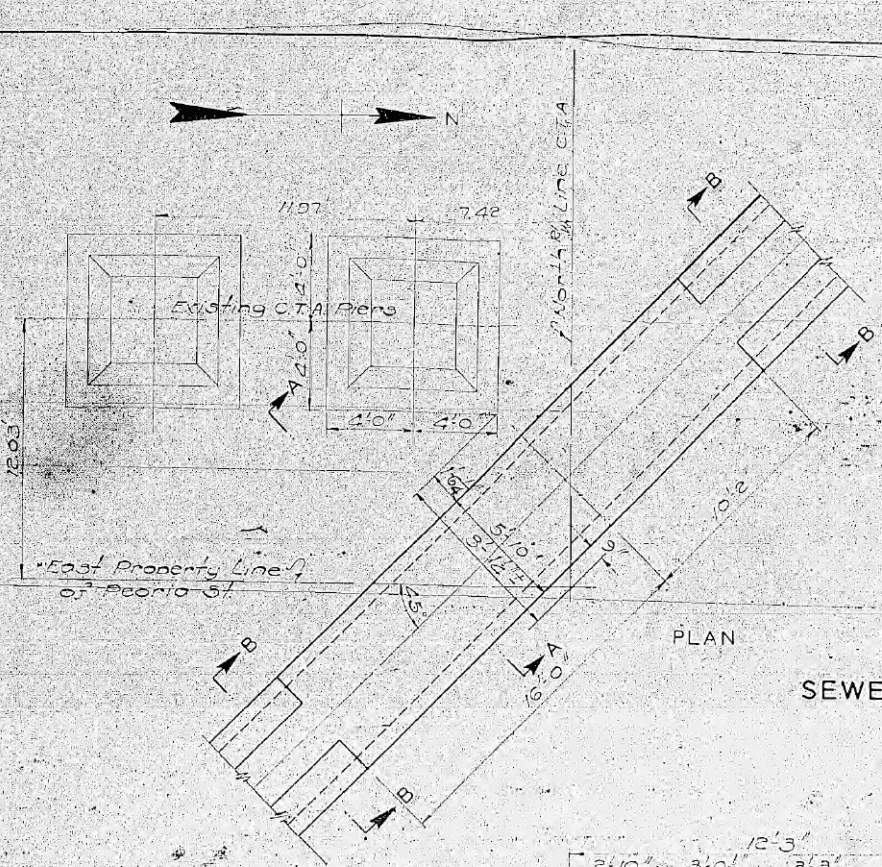


PLAN



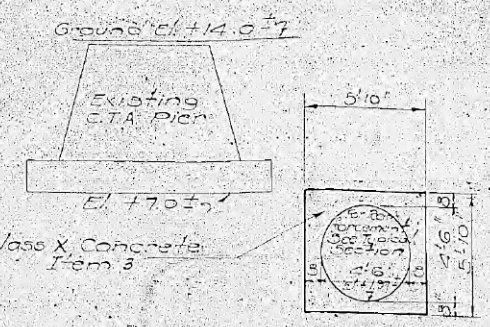
SECTION D-D

CONNECTIONS TO EXISTING SEWER
Scale 1/4" = 1'-0"

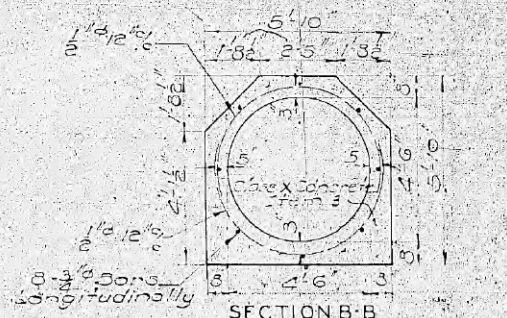


PLAN

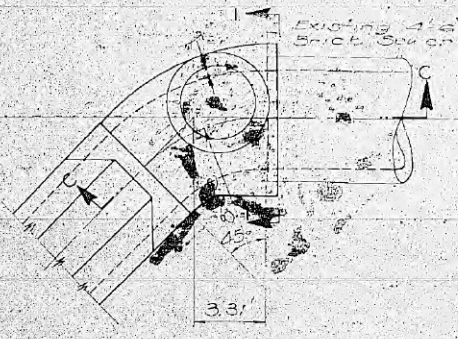
SEWER AT ELEVATED COLUMN
Scale 1/4" = 1'-0"



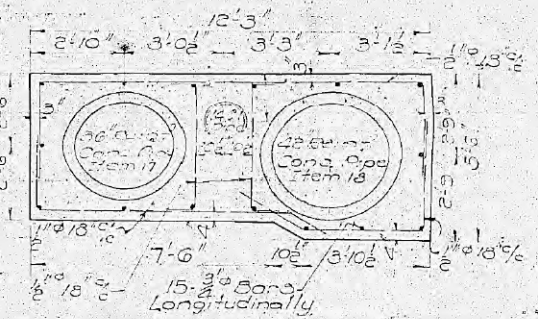
SECTION A-A



SECTION B-B
TYPICAL CROSS SECTION
4'-6" CONCRETE SEWER
Scale 1/8" = 1'-0"

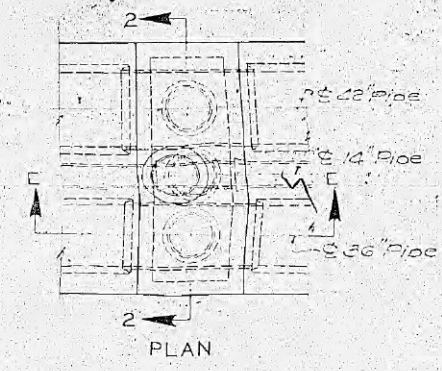


PLAN

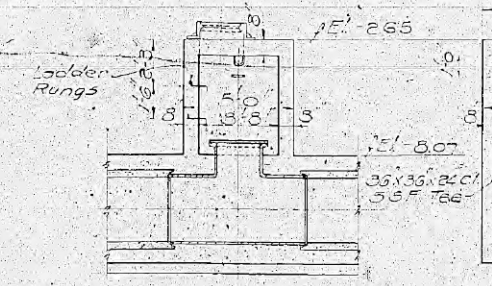


TYPICAL CROSS SECTION
OF SIPHON
Scale 3/8" = 1'-0"

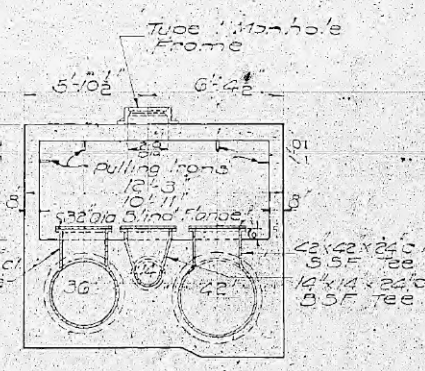
Note
All siphon encasement and sewer concrete to be class X, Item 3. All encasement reinforcing steel to be under Item 4. For further concrete details and complete reinforcement details see Sheet 27.



PLAN



SECTION E-E



SECTION 2-2

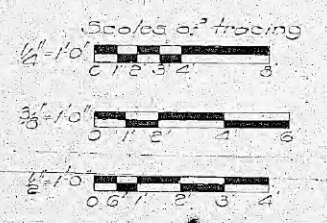
CLEANOUT MANHOLE
Scale 1/4" = 1'-0"

CITY OF CHICAGO
DEPARTMENT OF SUBWAYS AND SUPERHIGHWAYS
WEST ROUTE SUPERHIGHWAY
SECTION 2525.1B
PEORIA STREET BRIDGE

SEWER DETAILS

SCALE: AS NOTED

SHEET NO. 23 OF 30 SHEETS



Drawn By: L. D. Heiberg, R. L. Limtrup
Checked By: Geo. J. Franko
Approved By: [Signature]
Subway Plan Engineer



D:\6029-sht-Ex-Siphon-07.dgn	DESIGNED -	REVISED -	12/18/2013
USER NAME = BAWtor1	DRAWN - BAW	REVISED -	
PLOT SCALE = 100.0000' / in.	CHECKED - JWC	REVISED -	
PLOT DATE = 12/19/2013	DATE - 10/30/2013	REVISED -	

STATE OF ILLINOIS
DEPARTMENT OF TRANSPORTATION

AS BUILT SIPHON PLANS
PEORIA STREET

SCALE: NONE SHEET 7 OF 14 SHEETS STA. TO STA.

F.A.I. RTE.	SECTION	COUNTY	TOTAL SHEETS	SHEET NO.
90/94/290	2013-011R	COOK	356	76H
CONTRACT NO. 60W29			ILLINOIS FED. AID PROJECT	