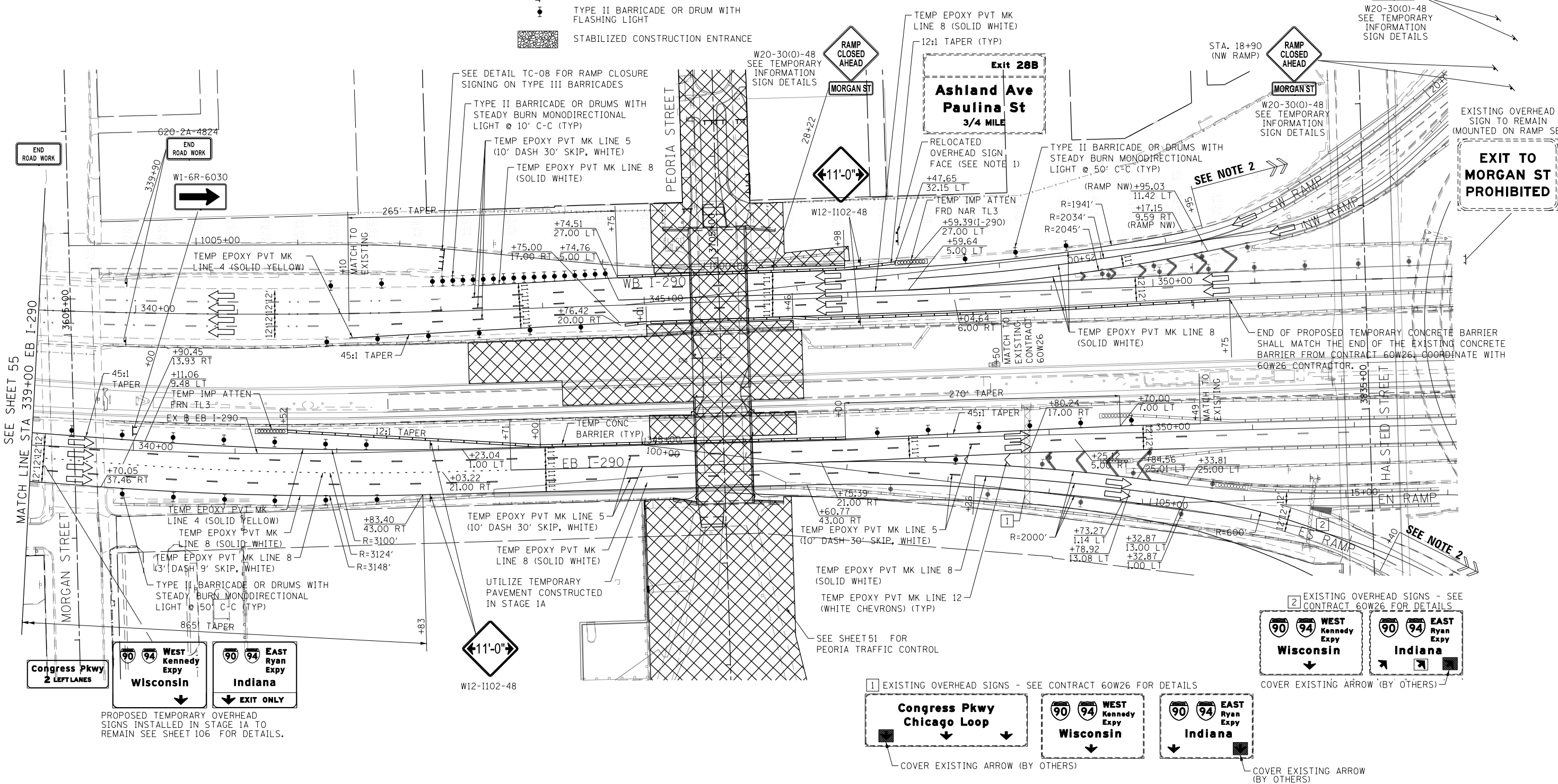
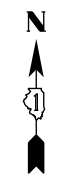


NOTES

1. REMOVE EXISTING OVERHEAD SIGN STRUCTURE BRIDGE MOUNTED (WB-01-BM). RELOCATE EXISTING SIGN PANEL TO (STA 347+51, 58' LT). SIGN PANEL SHALL BE PLACED ON WOOD SIGN SUPPORTS. SIGN SHALL REMAIN FOR THE DURATION OF CONSTRUCTION OR UNTIL THE PROPOSED BRIDGE MOUNTED SIGN (WB-02-BM) IS INSTALLED. REFER TO SIGNING PLANS FOR DETAILS.
2. TEMPORARY TRAFFIC CONTROL PAVEMENT MARKINGS SHALL MATCH TO THE CURRENT STAGE OF TRAFFIC CONTROL FOR CONTRACT NUMBER 60W26. FURTHER COORDINATION OF TEMPORARY MARKINGS AND DEVICES ALONG EASTBOUND AND WESTBOUND I-290 WILL BE REQUIRED.

LEGEND

- WORK ZONE
- TEMPORARY IMPACT ATTENUATOR
- TEMPORARY CONCRETE BARRIER
- DIRECTION OF TRAFFIC FLOW
- SIGN
- ARROW BOARD
- TYPE III BARRICADE
- TYPE II BARRICADE OR DRUM WITH FLASHING LIGHT
- STABILIZED CONSTRUCTION ENTRANCE



SEE SHEET 55
MATCH LINE STA 339+00 EB I-290

MORGAN STREET

PROPOSED TEMPORARY OVERHEAD SIGNS INSTALLED IN STAGE 1A TO REMAIN SEE SHEET 106 FOR DETAILS.

1 EXISTING OVERHEAD SIGNS - SEE CONTRACT 60W26 FOR DETAILS

2 EXISTING OVERHEAD SIGNS - SEE CONTRACT 60W26 FOR DETAILS



COVER EXISTING ARROW (BY OTHERS)



COVER EXISTING ARROW (BY OTHERS)

FILE PATH = c:\pwworking\lsc\com00\jacobremas\02204539\016029-Sht-Staging-23.dgn



D16029-Sht-Staging-23.dgn	DESIGNED - JDT	REVISED - A 01/20/2014
USER NAME = mboldwin	DRAWN - JTR	REVISED -
PLOT SCALE = 100.0000' / in.	CHECKED - JMG	REVISED -
PLOT DATE = 1/21/2014	DATE - 10/30/2013	REVISED -

STATE OF ILLINOIS
DEPARTMENT OF TRANSPORTATION

SUGGESTED STAGES OF CONSTRUCTION AND TRAFFIC CONTROL PLAN
I-290 STAGE 1B

SCALE: 1"=50' SHEET 3 OF 3 SHEETS STA. 339+00 TO STA. 353+00

F.A.I. RTE. 90/94/290	SECTION 2013-011R	COUNTY COOK	TOTAL SHEETS 356	SHEET NO. 56
ILLINOIS FED. AID PROJECT			CONTRACT NO. 60W29	

