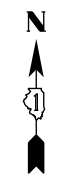


NOTES

1. REMOVE EXISTING OVERHEAD SIGN STRUCTURE BRIDGE MOUNTED (WB-01-BM). RELOCATE EXISTING SIGN PANEL TO (STA 347+51, 58' LT). SIGN PANEL SHALL BE PLACED ON WOOD SIGN SUPPORTS. SIGN SHALL REMAIN FOR THE DURATION OF CONSTRUCTION OR UNTIL THE PROPOSED BRIDGE MOUNTED SIGN (WB-02-BM) IS INSTALLED. REFER TO SIGNING PLANS FOR DETAILS.
2. REMOVE EXISTING OVERHEAD SIGN STRUCTURE BRIDGE MOUNTED (EB-03-BM AND EB-04-BM) AFTER PROPOSED SIGNS (EB-01-BM AND EB-02-BM) HAVE BEEN PLACED IN PROPOSED LOCATION. REFER TO SIGNING PLANS FOR DETAILS.
3. TEMPORARY TRAFFIC CONTROL PAVEMENT MARKINGS SHALL MATCH TO THE CURRENT STAGE OF TRAFFIC CONTROL FOR CONTRACT NUMBER 60W26. FURTHER COORDINATION OF TEMPORARY MARKINGS AND DEVICES ALONG EASTBOUND AND WESTBOUND I-290 WILL BE REQUIRED.
4. THE STAGING WEAVE SHALL BE SIGNED AND MAINTAINED ACCORDING TO DISTRICT DETAIL TC-09. THE 2 DOUBLE REVERSE CURVES SIGN SHOWN REPLACES THE 4'x8' TEMPORARY INFORMATION SIGN IN TC-09 AT THE WEAVE POINT DUE TO SPACE RESTRICTIONS. IF THE RESIDENT ENGINEER DETERMINES THERE IS ENOUGH CLEARANCE BETWEEN THE RAIL AND TRAFFIC, TEMPORARY INFORMATION SIGN 7 SHALL BE USED IN PLACE OF THE SIGN CURRENTLY SHOWN IN THE PLANS. SEE SHEET 48A.

LEGEND

- WORK ZONE
- TEMPORARY IMPACT ATTENUATOR
- TEMPORARY CONCRETE BARRIER
- DIRECTION OF TRAFFIC FLOW
- SIGN
- ARROW BOARD
- TYPE III BARRICADE
- TYPE II BARRICADE OR DRUM WITH FLASHING LIGHT
- STABILIZED CONSTRUCTION ENTRANCE

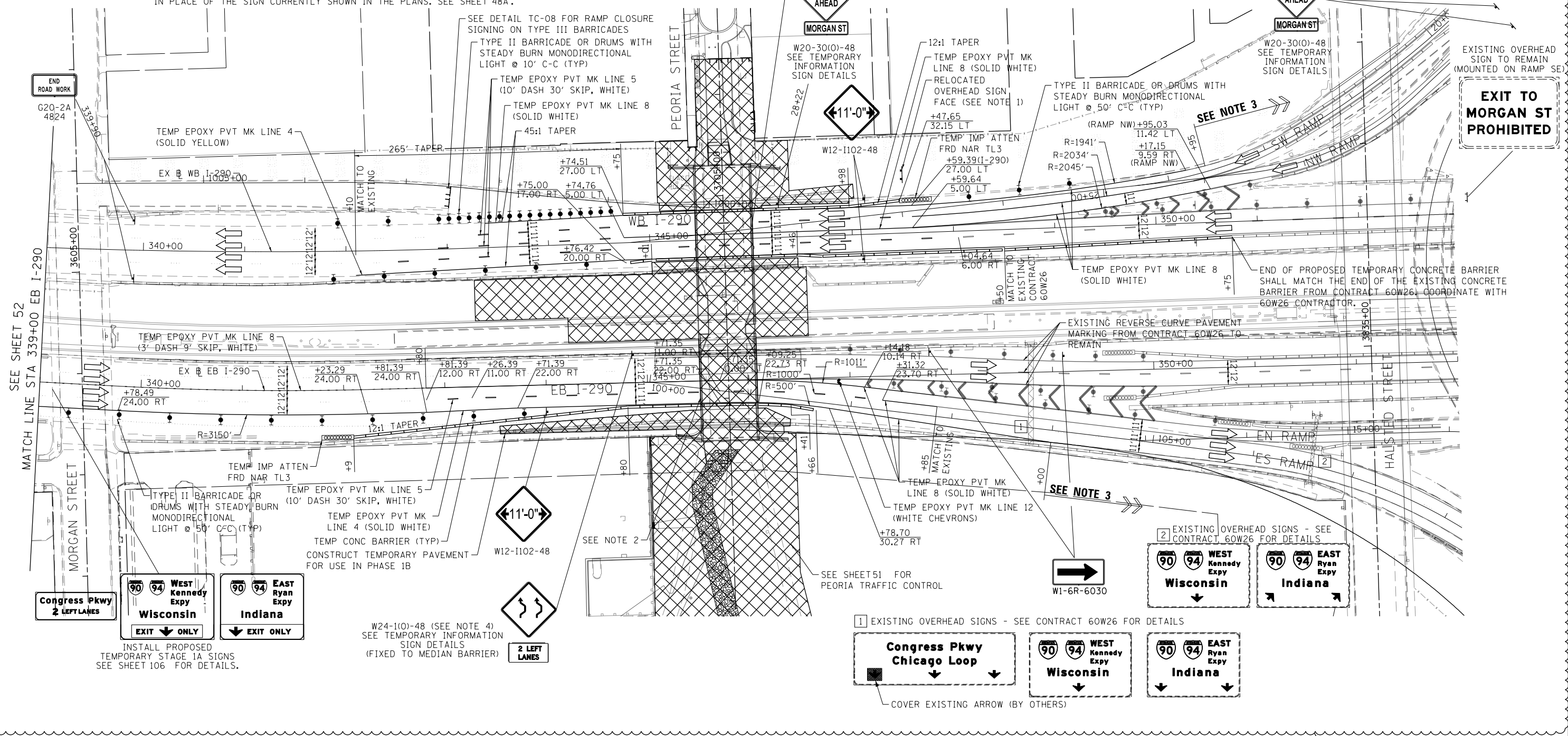


SEE NOTE 1
Exit 28B
Ashland Ave
Paulina St
3/4 MILE

RAMP CLOSED AHEAD
 STA. 12+75
 (SW RAMP)

RAMP CLOSED AHEAD
 STA. 18+90
 (NW RAMP)

EXIT TO MORGAN ST PROHIBITED



SEE SHEET 52
 MATCH LINE STA 339+00 EB I-290

MORGAN STREET

PEORIA STREET

HALSTED STREET

90 94 WEST Kennedy Expy Wisconsin
EXIT ONLY

90 94 EAST Ryan Expy Indiana
EXIT ONLY

INSTALL PROPOSED TEMPORARY STAGE 1A SIGNS SEE SHEET 106 FOR DETAILS.

W24-100-48 (SEE NOTE 4) SEE TEMPORARY INFORMATION SIGN DETAILS (FIXED TO MEDIAN BARRIER)

2 LEFT LANES

90 94 WEST Kennedy Expy Wisconsin
EXIT ONLY

90 94 EAST Ryan Expy Indiana
EXIT ONLY

COVER EXISTING ARROW (BY OTHERS)

90 94 WEST Kennedy Expy Wisconsin
EXIT ONLY

90 94 EAST Ryan Expy Indiana
EXIT ONLY

EXISTING OVERHEAD SIGNS - SEE CONTRACT 60W26 FOR DETAILS

EXISTING OVERHEAD SIGNS - SEE CONTRACT 60W26 FOR DETAILS

SEE SHEET 51 FOR PEORIA TRAFFIC CONTROL

SEE NOTE 3

SEE NOTE 3

SEE DETAIL TC-08 FOR RAMP CLOSURE SIGNING ON TYPE III BARRICADES
 TYPE II BARRICADE OR DRUMS WITH STEADY BURN MONODIRECTIONAL LIGHT @ 10' C-C (TYP)

TEMP EPOXY PVT MK LINE 5 (10' DASH 30' SKIP, WHITE)
 TEMP EPOXY PVT MK LINE 8 (SOLID WHITE)
 45:1 TAPER

TEMP EPOXY PVT MK LINE 4 (SOLID YELLOW)

EX # WB I-290

TEMP EPOXY PVT MK LINE 8 (3' DASH 9' SKIP, WHITE)

EX # EB I-290

TEMP IMP ATTN FRD NAR TL3

TEMP EPOXY PVT MK LINE 5 (10' DASH 30' SKIP, WHITE)

TEMP EPOXY PVT MK LINE 4 (SOLID WHITE)

TEMP CONC BARRIER (TYP)

CONSTRUCT TEMPORARY PAVEMENT FOR USE IN PHASE 1B

11-0"

11-0"

11-0"

RAMP CLOSED AHEAD

W20-30(0)-48 SEE TEMPORARY INFORMATION SIGN DETAILS

11-0"

W12-1102-48

TEMP IMP ATTN FRD NAR TL3 +59.39(L-290) 27.00 LT +59.64 5.00 LT

TEMP EPOXY PVT MK LINE 8 (SOLID WHITE)

TEMP EPOXY PVT MK LINE 12 (WHITE CHEVRONS)

TEMP EPOXY PVT MK LINE 8 (SOLID WHITE)

TEMP EPOXY PVT MK LINE 12 (WHITE CHEVRONS)

TEMP EPOXY PVT MK LINE 8 (SOLID WHITE)

TEMP EPOXY PVT MK LINE 12 (WHITE CHEVRONS)

TEMP EPOXY PVT MK LINE 8 (SOLID WHITE)

TEMP EPOXY PVT MK LINE 12 (WHITE CHEVRONS)

TEMP EPOXY PVT MK LINE 8 (SOLID WHITE)

TEMP EPOXY PVT MK LINE 12 (WHITE CHEVRONS)

TEMP EPOXY PVT MK LINE 8 (SOLID WHITE)

TEMP EPOXY PVT MK LINE 12 (WHITE CHEVRONS)

TEMP EPOXY PVT MK LINE 8 (SOLID WHITE)

TEMP EPOXY PVT MK LINE 12 (WHITE CHEVRONS)

TEMP EPOXY PVT MK LINE 8 (SOLID WHITE)

TEMP EPOXY PVT MK LINE 12 (WHITE CHEVRONS)

FILE PATH = c:\pwworking\lscorcoran\pwworking\1016024591.dwg



D:\60W29-Sht-Staging-13.dgn	DESIGNED - JDT	REVISED - 01/20/2014
USER NAME = mboldwin	DRAWN - JTR	REVISED -
PLOT SCALE = 100.0000' / in.	CHECKED - JMG	REVISED -
PLOT DATE = 1/21/2014	DATE - 10/30/2013	REVISED -

STATE OF ILLINOIS DEPARTMENT OF TRANSPORTATION

SUGGESTED STAGES OF CONSTRUCTION AND TRAFFIC CONTROL PLAN I-290 STAGE 1A

SCALE: 1"=50' SHEET 3 OF 3 SHEETS STA. 339+00 TO STA. 353+00

F.A.I. RTE. 90/94/290	SECTION 2013-011R	COUNTY COOK	TOTAL SHEETS 356	SHEET NO. 53
CONTRACT NO. 60W29			ILLINOIS FED. AID PROJECT	

