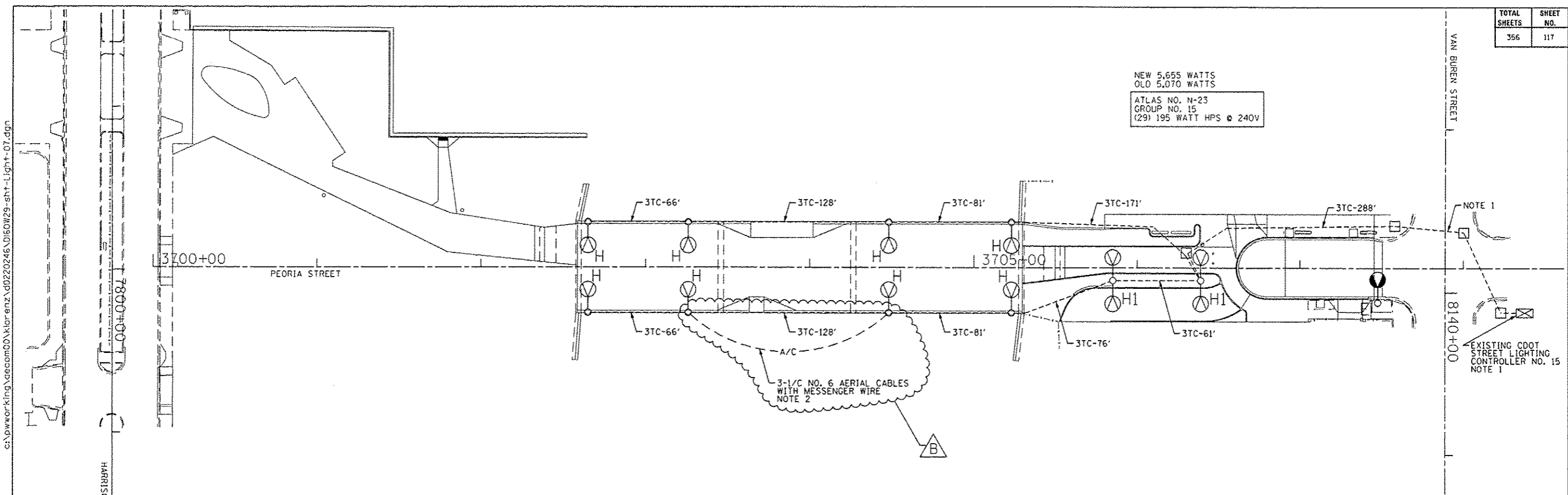


TOTAL SHEETS	SHEET NO.
356	117

NEW 5,655 WATTS
 OLD 5,070 WATTS
 ATLAS NO. N-23
 GROUP NO. 15
 (29) 195 WATT HPS @ 240V



NOTE 1
 EXISTING CDOT STREET LIGHTING CONTROLLER NO. 15
 NOTE 1

3-1/2 NO. 6 AERIAL CABLES WITH MESSENGER WIRE
 NOTE 2

c:\pwworking\dec00\klor enz\d0220246\0160W29-shr-Light-07.dgn 2/11/2014 8:34:20 AM

HARRISON STREET

NOTES:

- ROUTE NEW LIGHTING CIRCUIT THROUGH EXISTING CITY CONDUITS AND MANHOLES INTO THE EXISTING CDOT LIGHTING CONTROLLER AND MAKE THE NECESSARY CONNECTIONS TO THE EXISTING CIRCUIT BREAKERS. THIS WORK WILL NOT BE PAID FOR SEPARATELY AND SHALL BE INCLUDED IN THE COST OF THE "CABLE IN CONDUIT, TRIPLEX" PAY ITEM.
- PROVIDE A TEMPORARY AERIAL CABLE FEED AROUND THE CTA ENTRANCE FOR THE ROADWAY LIGHTING UNTIL THE PERMANENT CONDUIT AND CABLES ARE INSTALLED WITH THE BRIDGE DECK OVERLAY. THE TEMPORARY AERIAL CABLES SHALL BE REMOVED AFTER THE PERMANENT CONDUIT AND CABLES ARE INSTALLED AND APPROVED.

"H" PROVIDE 12.5' ALUMINUM POLE, 150W HPS LUMINAIRE AND 8 FOOT ALUMINUM DAVIT ARM PER DRAWING NOS. 940 AND 945.
 "H1" PROVIDE 12.5' ALUMINUM POLE, TWO 150W HPS LUMINAIRES AND TWIN 8 FOOT DAVIT ARMS PER DRAWING NOS. 940 AND 945.

DATE	REVISION
12/18/2013	
2/10/2014	
CITY OF CHICAGO	
DEPARTMENT OF TRANSPORTATION DIVISION OF ENGINEERING	
 <small>303 EAST WACKER DRIVE, SUITE 1400 CHICAGO, IL 60601-4276 PHONE: (312) 313-7000 FAX: (312) 313-6900</small>	
WORK ORDER NO.	DATE
COST ALLOCATION ACCOUNT	
APPROPRIATION ACCOUNT (MATERIAL / LABOR)	
PEORIA STREET LIGHTING CABLE AND EQUIPMENT INSTALLATION PLAN	
CITY OF CHICAGO DEPT. OF TRANSPORTATION DIVISION OF ELECTRICAL OPERATIONS	
DRAFTSMAN: CAM	CHIEF DRAFTSMAN: WDS
SUPERVISING ENGINEER/ELEC. DESIGN ENGR. JPC	ENGINEER: WDS
ENGINEER OF ELECTRICITY:	E-07
GEN'L SUPT. OF ELECTRICITY:	
DEPUTY COMMISSIONER:	
SIZE: 22" 34"	SCALE: 1" = 30'
DATE: 05/14/13	DWG. NO.: 7 OF 19
C.D.O.T. PROJECT NO.:	

FOR CONDUIT AND FOUNDATION PLANS
 SEE DRAWING NO. E-06.
 FOR LIGHTING REMOVAL PLANS SEE
 DRAWING NO. E-08.