

F.A.I. RTE.	SECTION	COUNTY	TOTAL SHEETS	SHEET NO.
90/94/290	2013-011R	COOK	356	1
ILLINOIS			CONTRACT NO. 60W29	

FOR INDEX OF SHEETS AND STANDARDS SEE SHEET NO. 2 AND 3

STATE OF ILLINOIS
DEPARTMENT OF TRANSPORTATION
DIVISION OF HIGHWAYS

**PROPOSED
HIGHWAY PLANS**

PEORIA STREET BRIDGE AT
I-290/CONGRESS PARKWAY
(CIRCLE INTERCHANGE)
SECTION 2013-011R
BRIDGE REPLACEMENT,
ROADWAY RECONSTRUCTION, LIGHTING,
CTA STATION REHABILITATION
PROJECT: ACNHPP-0290(200)
COOK COUNTY
C-91-231-13

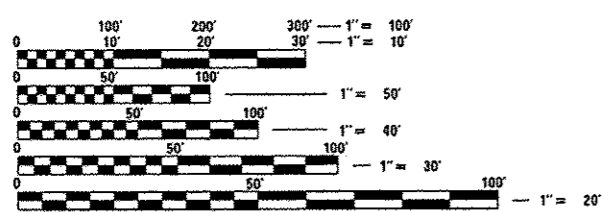
DESIGN DESIGNATIONS:	POSTED DESIGN SPEEDS:
PEORIA STREET 0(2040) LOCAL STREET (URBAN)	N/A
WB I-290 54,000(2040) INTERSTATE	45 /50 MPH
EB I-290 33,000(2040) INTERSTATE	45 /50 MPH
NW RAMP 36,000(2040) INTERSTATE	35 /35 MPH
EN RAMP 31,000(2040) INTERSTATE	30 /30 MPH
ES RAMP 44,000(2040) INTERSTATE	40 /40 MPH

*356 + 38 = 394
D-91-227-13 *394 + 1 = 395



<p>JENNIFER M. GOLEMBA LICENSED PROFESSIONAL ENGINEER OF ILLINOIS DATE: 10/10/13 SHEET RANGE: 1-74, 76B, 102, 106-110, 195-197, 309-330, 332-356</p>	<p>WILLIAM D. STEHMER LICENSED PROFESSIONAL ENGINEER OF ILLINOIS DATE: 10/10/13 SHEET RANGE: 111-132, 331</p>
<p>DAJIN LIU LICENSED STRUCTURAL ENGINEER OF ILLINOIS DATE: 10/10/13 SHEET RANGE: 75, 76A, 103-105, 133-189</p>	<p>OREN X. SKIDELSKY LICENSED PROFESSIONAL ENGINEER OF ILLINOIS DATE: 10/10/13 SHEET RANGE: 262-308</p>
<p>CHARLES ROY ROWE LICENSED ARCHITECT OF ILLINOIS DATE: 10/10/13 SHEET RANGE: 171A, 171B, 214-261</p>	

DISTRICT 1 DESIGN /CONSULTANT SERVICES: BRIAN KUTTAB, P.E. (847)705-4431 SCHAUMBURG, ILLINOIS

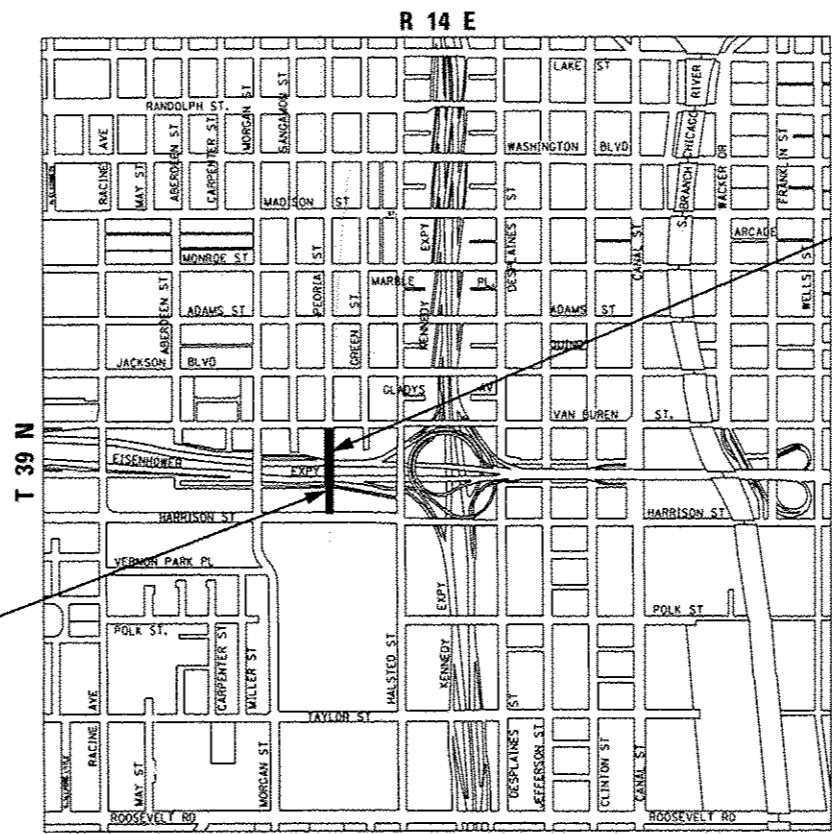


FULL SIZE PLANS HAVE BEEN PREPARED USING STANDARD ENGINEERING SCALES. REDUCED SIZED PLANS WILL NOT CONFORM TO STANDARD SCALES. IN MAKING MEASUREMENTS ON REDUCED PLANS, THE ABOVE SCALES MAY BE USED.

C.U.A.N.
CHICAGO UTILITY ALERT NETWORK
1-312-744-7000

NPDES PERMIT INFORMATION	
NPDES Disturbed	
Area =	1.98 Acres
Approximate Location of Roadway is :	
Longitude	87° 38' 58.22" W
Latitude	41° 52' 31.87" N

PEORIA STREET BRIDGE
SN 016-1708
STA 3702 + 57.64 TO
STA 3705 + 30.73



LOCATION MAP
NOT TO SCALE
THE PROJECT IS LOCATED IN THE CITY OF CHICAGO
GROSS LENGTH = 687.95 FT (0.130 MILES)
NET LENGTH = 687.95 FT (0.130 MILES)

PEORIA STREET:
STA 3700 + 03.04 TO
STA 3706 + 90.99



STATE OF ILLINOIS
DEPARTMENT OF TRANSPORTATION
DIVISION OF HIGHWAYS

SUBMITTED October 15 20 13

John D. Baranzelli, P.E.
DEPUTY DIRECTOR OF HIGHWAYS, REGION ENGINEER

John D. Baranzelli, P.E.
ENGINEER OF DESIGN AND ENVIRONMENT

Dec 6 20 13

Omer Osman, P.E.
DIRECTOR OF HIGHWAYS, CHIEF ENGINEER

**PRINTED BY THE AUTHORITY
OF THE STATE OF ILLINOIS**